

The Brigham Estate Province of Canada Part III

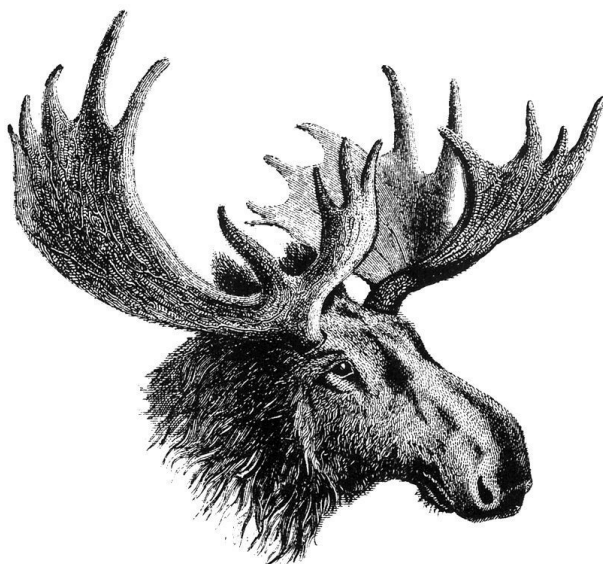


Eastern Auctions Ltd.

Public Auction
March 8, 2024

Eastern Auctions Ltd.

PUBLIC AUCTION



**The Brigham Estate
Province of Canada
Part III**

March 8, 2024

Eastern Auctions Ltd.

P.O. Box 250, Bathurst, New Brunswick, E2A 3Z2, Canada

Tel: 1 (506) 548-8986 • Fax: 1 (506) 546-6627

bids@easternauctions.com

easternauctions.com

Copyright © 2024 – All Rights Reserved

AUCTION INFORMATION

For assistance and further information please contact:

SPECIALISTS IN STAMPS:

Gary Lyon
Yohann Tanguay

SOFTWARE ENGINEER:

Ron Kozlowski

CONSIGNOR SETTLEMENTS

ACCOUNTS RECEIVABLE:

Cindy Rogers

CATALOGUE EDITORS:

Gary Lyon
Yohann Tanguay
Luc Doucet

VENUE

Eastern Auctions Ltd.
132 Main Street
Bathurst, New Brunswick
E2A 1A4
Tel: 1 (506) 548-8986

TERMS OF SALE AND AUCTION AGENTS
LISTED AT THE BACK OF THE CATALOGUE.

Viewing Sessions (Appointment Recommended)

Thursday March 7, 2024 – 9:00am to 4:00pm

Friday March 8, 2024 – 9:00am to 12:00pm

Auction Session

Friday March 8, 2024 – 1:30pm (Lot 1-151)

We are delighted to present the Grand Prix collection of the Province of Canada formed by the late Ron Brigham, who passed away on August 4, 2022 at the age of 78. The collection garnered many gold-medals on the international stage in the late 1990s, culminating in Grand Prix awards at AUSTRALIA 99 and at BELGICA 2001. He is the only Canadian to achieve the highest award in competitive philately. We hope the perusal and the study of the collection will inspire others to follow a path of their own.



Ron was a Fellow of the Royal Philatelic Society of Canada and a member of several other philatelic organizations such as the Collectors Club of New York and the Club de Monte-Carlo de l'Élite de la Philatélie. His passion and tenacity in acquiring the greatest items were not only limited to the Pence & Cents issues of Canada, but also to post-Confederation issues from Large Queens to the modern era. At the height of his collecting and exhibiting, his holdings filled more than 150 volumes! In a series of auction sales between 2014 and 2016, many of his collections were dispersed to the delight of collectors. However, his beloved and cherished Pence & Cents were kept out of the limelight.

We now present the third portion of the collection, offering another wide assortment of lots. In addition to the great rarities, many of which are of unique status, collectors will find exceptional proofs (often showing well-documented plate varieties), single stamps and rare multiples in the highest quality attainable, noteworthy postal history with rare frankings and beautiful advertising covers.

The presentation and organization of the lots follows the life span of each stamp design, as opposed to catalogue numbers, showing the evolution of each classic design.

Like all the greatest collections, Brigham began early in acquiring important pieces, laying the foundation of what was to become one of the very best Canadian collections ever assembled. His rapid progress in acquiring rarities has become legendary. While researching and lotting the collection, we recognized many key items that originated from three of the most prominent collections of their generation – the Sam Nickle Pence & Cents issue collections sold in 1988 & 1993 respectively, the Weill Brothers' Stock dispersed in 1989 and the extensive "Lindemann" collections of Ian Bett, sold by private treaty in 1997 through John Jamieson of Saskatoon Stamp Centre. With these three instrumental turns of events, Brigham seized the opportunity to acquire many rarities needed for a great collection.

We invite you to participate in Part III. The auction begins with some of the great rarities of the Twelve pence, Seven and One-Half pence & Twelve and One-Half cents Queen Victoria "Chalon" stamps.

Enjoy the auction and good luck with your bids!

The Eastern Auctions Team

The 12 pence, 7½ pence & 12½ cents Queen Victoria

In 1837, artist Alfred Edward Chalon painted his famed portrait of Her Majesty Queen Victoria, on the occasion of her first visit to the House of Lords following her accession to the throne. The image was engraved two years later by Samuel Cousins, widely circulating and gaining in popularity shortly thereafter throughout the British Empire, and helping to establish her status as a great monarch. She would reign for almost sixty-four years, covering the formative period for postage stamps of Great Britain and her dominions and colonies around the world.

First used on banknotes, Rawdon, Wright, Hatch & Edson in New York soon followed in designing the first ever postage stamp bearing the “Chalon” portrait - the iconic Canada 12 pence black. Credited to famed engraver Alfred Jones, the 12 pence was designed and printed by the New York firm and issued in Canada on June 14, 1851. The design was subsequently employed for the 7½ pence currency (6 pence sterling) packet letter rate stamp of 1857, and then following the change to decimal currency, on the 12½ cents stamp issued July 1859 (after the merger with the American Bank Note Company in April 1858).



For the next few decades, the “Chalon” portrait appeared on about 20 different designs on approximately 300 stamps (that have a Scott number) in ten British colonies from the Bahamas to Tasmania from the 1850s to the 1890s, including New Brunswick, Nova Scotia and Prince Edward Island.

From its day of issue, the twelve penny saw little circulation. The only consignment, 50,000 stamps (500 sheets), was received May 4, 1851 by the Post Office Department of Canada. From the first order received on June 14, 1851 (sent to Hamilton) to the last on December 4, 1854 (to Smith's Falls), a mere 1,510 stamps were distributed to fourteen post offices. The balance was destroyed on May 1st, 1857. It has been reported that about 90 examples survive in any condition, whether mint or used or on cover. From very early times, the twelve penny became world famous, coveted by connoisseurs of rare postage stamps.

From 1851 to 1867, Canada issued three different stamps with the timeless “Chalon” portrait. The twelve penny prepaid the double weight letter to the United States, the single rate to Newfoundland and British West Indies, by Royal Mail Steamer (Cunard) via Halifax. The stamp could also be used in combination with other stamps for heavier letters within Canada, to the United Kingdom and beyond. The 7½ pence green (6 pence sterling) was issued June 2, 1857 in compliance with the newly reduced Trans-Atlantic letter rate, for the Allan Line – Canadian Mail Packet which began service from Quebec May 24, 1856. In July 1859 and for the next 8 years, a 12½ cent green was issued corresponding to the same rate in the newly adopted decimal currency.

Some of the greatest Canadian rarities portraying the “Chalon” portrait are featured in this third installment of the Brigham Estate – Province of Canada. After more than 35 years, the finest mint 12 pence pair – hailed as “the most important philatelic treasure of Canada” - comes to auction. This gem will be offered together with the finer of the two known used pairs as well as a sheet margin example used on cover to the United States. Headlining the 7½ pence issues is a unique die essay, the extraordinary “Gill” mint block, and two great covers – the earliest usage of the stamp on cover and a rare double Allan Line rate to the U.K. Among the 12½ cents highlights is the largest mint multiple and the highest recorded Decimal issue franking.

Province of Canada - Part III



Lot 1 - 151



The Brigham Estate
Province of Canada – Part III
Lot 1-151

Friday March 8, 2024 begins at 1:30pm Atlantic Time (AST)

TWELVE PENCE

**A RARE AND HIGHLY DESIRABLE
GOODALL DIE PROOF IN NEAR ISSUED COLOUR**



- 1 P 3TC, 1879 (circa.) 12p Queen Victoria "Goodall" Die Proof**, engraved, printed in a very attractive dark grey black colour on india paper 24 x 30mm die sunk on card 29 x 32mm with distinctive engraver's etched marks at top left, showing the characteristic scar at "CE" of "PENCE". A spectacular die proof, displaying one of the closest colours to the issued stamp and highly desirable as such; superb in all respects, XF (Minuse & Pratt 3TC3g) **Est. 10,000.00+**

Provenance: Guilford Collection of Canada Pence Issues, Siegel, September 1994; Lot 2006



- 2 P 3TC, 1879 (circa.) 12p Queen Victoria** A superb and very attractive "Goodall" Die Proof, engraved, printed in purple on yellowish thin hard bond paper 30 x 29mm, originating from the Compound Die with characteristic scar in "CE" of "PENCE", the distinctive mark associated with "Goodall" proofs. A fabulous coloured die proof, XF (Minuse & Pratt 3TC3d) **Est. 7,500.00+**

Provenance: The "Carrington" Collection of Canada 1851-1864 Issues, Matthew Bennett Auctions, June 2002; Lot 3032



- 3 P 3TC, 1879 (circa.) 12p Queen Victoria** "Goodall" Die Proof, engraved, printed in vermilion on india paper, originating from the Compound Die, showing scar in "CE" of "PENCE"; minor indentation of a paper clip and slight mounting mark. A beautiful coloured die proof and of VF appearance (Unitrade cat. \$12,500; Minuse & Pratt 3TC3a) **Est. 5,000.00+**

Provenance: C.G. Kemp, Robson Lowe, February 1968; Lot 1032

The "Carrington" Collection of Canada 1851-1864 Issues, Matthew Bennett Auctions, June 2002; Lot 3034



A SPECTACULAR PLATE PROOF MULTIPLE OF THE FAMOUS TWELVE PENNY BLACK



- 4 P 3, 1851 12p Black** A remarkable plate proof block of eight on india paper with faded diagonal SPECIMEN overprint; being Positions 41-44, 51-55, small red crayon marks in margin apparently denoting plate flaws. Pre-printing paper fold running diagonally on first three proofs in top row, certainly one of the largest surviving proof multiples, VF **Est. 10,000.00+**

Provenance: Dale-Lichtenstein, Sale 2 - British North America, Part One, H.R. Harmer, Inc., November 1968; Lot 54 - originally a block of 60 from which this block originates.

Sam Nickle, Christie's Robson Lowe, New York, March 1993; Lot 18

The "Lindemann" Collection (private treaty, circa 1997)

According to Robson Lowe, "it is believed this was an impression made in 1858, at the time of the formation of the American Bank Note Company. Utilized as a working proof for the improvement of the plate prior further proofs made in 1859."



The Dale-Lichtenstein block from which this multiple comes..

**A SELDOM SEEN SPECIMEN PROOF BLOCK
IN FRESH, CHOICE QUALITY**



5 P 3Pi, 1851 12p Black A lovely plate proof block of four on card mounted india paper with vertical SPECIMEN overprint in carmine; few blocks survive, VF and choice **10,000.00**

This block corresponds to plate positions 25-26 / 35-36 (Left Pane).

“The Most Important Philatelic Treasure of Canada”
-Sam Nickle sale (1988)



Lot 6 (250% actual size)

**A SUPERLATIVE MINT PAIR OF THE TWELVE PENNY PAIR
ACQUIRED FROM THE NICKLE SALE, MORE THAN 35 YEARS AGO
ONE OF THE "CROWN JEWELS" OF CANADIAN PHILATELY**



- 6 ★ 3, 1851 12p Brownish Black on Handmade Laid Paper, Imperforate** The glorious mint pair of the famous Twelve Penny Black, a fabulous item of the utmost rarity and aesthetic beauty. It was acquired by Ron Brigham in 1988; since then it has only surfaced at prestigious events and international exhibitions, deservedly garnering attention and dazzling a worldwide audience. One of the "Crown Jewels" of Canadian Philately, Extremely Fine, Original Gum, Lightly Hinged **640,000.00+**

Provenance: A Magnificent Collection of Postage Stamps, British North America, W. Elliot Woodward Co., March 1896; Lot 265. *See Excerpt on page 13.*

Dale-Lichtenstein, Sale 2 - British North America Part One, H.R. Harmer, Inc., November 1968; Lot 56 (Jim Sissons & Bob Lyman acquired the pair and sold it to Sam Nickle who then kept it in his collection for the next 20 years).

Sam Nickle Pence Issue Collection, Firby Auctions, October 1988; Lot 169 - aptly described as "The Magnificent Horizontal pair... the Most Important Philatelic Treasure of Canada", gracing the front cover of the pre-eminent "name-sale" auction catalogue. Realized US\$150,000 hammer against a catalogue value then of \$50,000 per single according to the old CS catalogue.

Exhibitions & Notes: Nickle Collection exhibit collection mentions "the bottom margin mint pair is Positions 93 and 94 from the Left Pane."

ANPHILEX '96 (Anniversary Philatelic Exposition Commemorating the 100th Year of the Collectors Club at the Waldorf.

Rare Stamps of the World, Claridge's London, July 1999, pictured in the official catalogue on page 45.

Le Club de Monte-Carlo, MonacoPhil 2011, also pictured in the official catalogue de l'exposition on page 63; being the most recent time this pair was exhibited publicly.



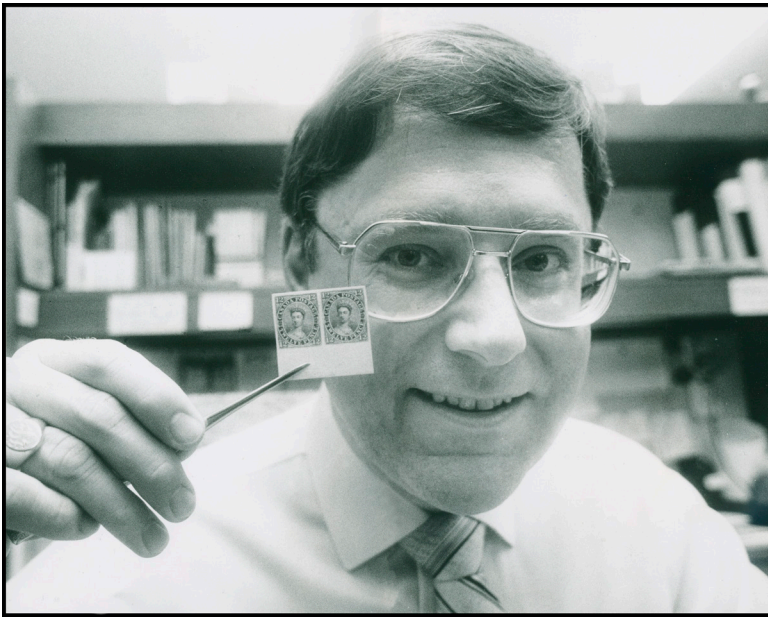
Literature: Capex 78 - The Twelve-Penny Black, Maple Leaves Journal, April 1978, Whole 167, Vol. 16, No. 11, pages 299-301, giving an excellent overview on the 12 pence stamp.

Illustrated in Robson Lowe "The Encyclopaedia of British Empire Postage Stamps, Vol. V - British North America" on page 166.

Saskatoon Buys 12d Black Pair at Firby Auction, BNA Topics, Whole 429, January – February 1989, Vol. 46, No. 1, pages 13-14

"1851 Canada Stamps Are Sold for \$39,000", BNA Topics, Whole 271-272, October - November 1968, Vol. 25, No. 9, page 230 (not mentioned in the article: buyers were J.N. Sissons and Bob Lyman who then sold it to famous collector Sam Nickle)

Illustrated in Capex '96 Gems of Canadian Philately on page 11.



John Jamieson of Saskatoon Stamp Centre holding the 12p black pair (1988).

Census: Listing of the five known pairs along with famous collectors who once own them.

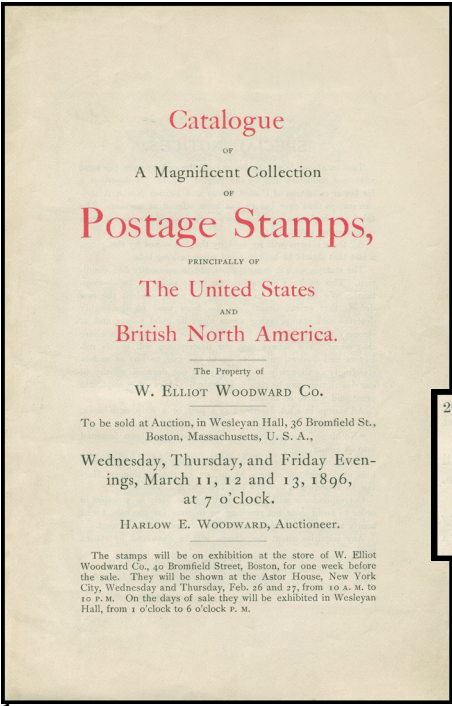
In Private Hands

- 1) The Jarrett – General Gill pair with close to very large margins, current whereabouts unknown.
- 2) The Dale-Lichtenstein - Nickle - Brigham superb mint pair with sheet margin at foot - offered here
- 3) The Ferrary - Hind - Hewitt - Kanai - Weill Brothers - Brigham mint pair (sold privately)

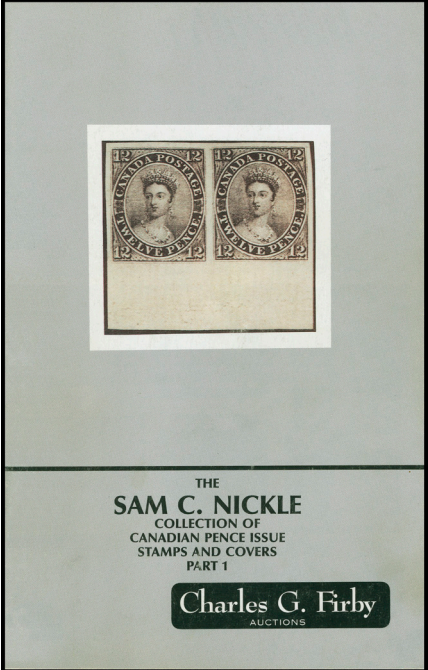
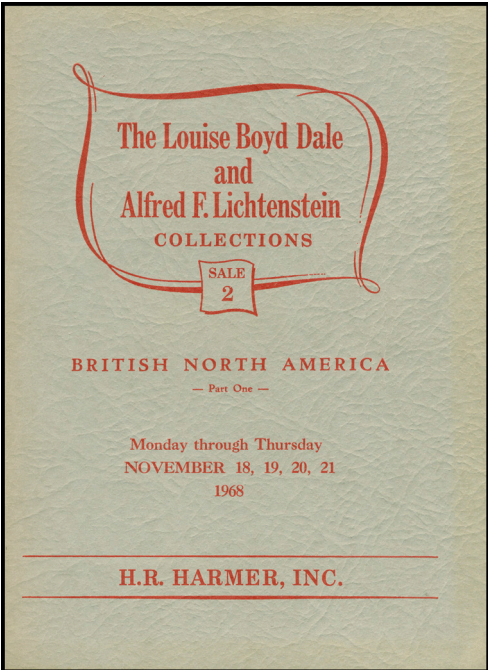
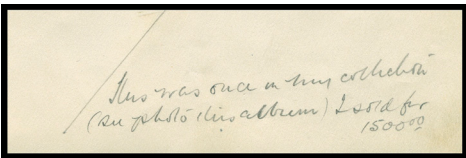
In Private Institutions

- 4) The Tapling pair with sheet margin at foot, residing in the permanent collections of the British Library
- 5) The Dale-Lichtenstein mint pair, lower left corner margin, clear to large margins on other sides, residing in the permanent collections at Library and Archives Canada.

A sixth pair - known as the Pack - Eno pair, vertical format with sheet margin at right, was split up many years ago.



265 1851, 12 pence, laid paper. Unsevered horizontal pair from the bottom of the sheet, and having as a consequence a margin nearly half an inch wide below the stamps. On the other three sides the margin is *beautifully wide*. The stamps have full original gum, never having been hinged. They are in every way perfect. *No other unused pair of the laid paper twelve pence is known.* See illustration. 1300.00



- ① Front cover of the 1896 British North America sale, W. Elliot Woodward, March 1896
- ② Image taken of the pair on photoplate from 1896 sale
- ③ Lot description along with handwritten prices realized
- ④ Intriguing handwritten note inside catalogue stating "this was once in my collection. I sold for 1500.00"
- ⑤ Front cover of the Dale-Lichtenstein, Sale 2, BNA Part One, H.R. Harmer, Inc., November 1968
- ⑥ Front cover of the Sam Nickle Pence Issue sale, Charles G. Firby, October 1988

“Most Attractive Example of this Great Rarity”

-John Foxbridge Collection (1988)



Lot 7 (250% actual size)

A MAGNIFICENT TWELVE PENNY USED PAIR THE FINER OF THE TWO SURVIVING PAIRS



7 □ **3, 1851 12p Black on Handmade Laid Paper, Imperforate** An extraordinary used pair of Canada's most famous stamp, cancelled by superb concentric rings ideally "face-free" on both stamps, two incredibly large margins to just touching at lower right, portion of adjacent stamp visible at top left, invisible crease on left stamp that was not even mentioned when this item sold at renowned name-sales of the past. A wonderful pair with remarkable attributes, by far the most desirable of the two known used pairs. A fantastic showpiece of the highest caliber that has resided in the Brigham collection for almost 35 years (acquired at the Weill Brothers auction in 1989), Fine to Very Fine **240,000.00**

Provenance: Charles Lathrop Pack, Part III, Harmer, Rooke & Co., November 1945; Lot 13

John Foxbridge (du Pont) Collection (private treaty 1988)

Weill Brothers, Christie's Robson Lowe, Zurich, November 1989; Lot 1522

Literature: Illustrated in Capex '96 Gems of Canadian Philately on page 11.

Census: Only two used pairs exist (none larger) as follow:

- 1) a horizontal pair with smudge cancels and horizontal crease, ex. Charles Lathrop Pack (Part II, April 1945; Lot 67), Duane Hilmer (September 1977; Lot 18), Daniel Cantor (September 2011; Lot 31)
- 2) the pair offered here.

A third pair once existed but was split up sometime in the 1970s, ex Dale-Lichtenstein (Sale 2, November 1968; Lot 58). The left stamp once graced the collections of Cartier (Part II), Foxbridge and Weill Brothers. The right stamp which has no side margins was once part of the Chartwell collection.



A VERY RARE TWELVE PENCE FRANKING DOUBLE WEIGHT LETTER RATE TO THE UNITED STATES



- 8 ☒ 1855 (December 19) Blue envelope mailed from Toronto to New York, repaired and cleaned, remarkably franked with a 12 pence black without visible laid lines on thin horizontal mesh wove paper, lifted and cleaned with repaired small flaws, clear to ample margins on three sides and large part sheet margin at right, central concentric rings cancel. Large circular Toronto, C.W. DEC 19 dispatch date-stamp struck at left along with border exchange "CANADA" arc and "PAID" handstamps in red; on reverse portion of handwritten docketing by receiver reads in part: "Rec... mber 21st 1855" and signed. Despite the imperfections, a great rarity and one of only eight recorded usages of the 12p pence on cover; two of which have not been seen in a century. A Fine appearing example of this great rarity (Unitrade 3; cat. \$300,000) **Est. 50,000.00+**

Expertization: 1958 & 1993 RPS of London certificates, the latter identifying it as "SG No. 16"

Provenance: The "Pipkin" Collection, Sissons Sale 338, June 1974; Lot 25

Kasimir Bileski (purchased in 1980s)

The "Lindemann" Collection (private treaty, circa. 1997)

Literature: Illustrated on the front cover of BNA Topics, Whole 521, Volume 66, No. 4, October – December 2009.

Illustrated in Winthrop Boggs "The Postage Stamps and Postal History of Canada" handbook on page 138 (Figure 12).

Illustrated in Arfken, Leggett, Firby, Steinhart "Canada's Pence Era - The Pence Stamps and the Canadian Mail 1851-1859" handbook on page 190 (Figure 169).

Census: One of eight genuine covers that exist in private hands; two have not been seen since 1911 & 1925 respectively. See "Twelve-Penny Black covers" by Charles Firby & George Arfken, BNA Topics, Whole 521, Volume 66, Number 4, October - December 2009, pages 8-20. This cover listed as No. 7 and is THE ONLY KNOWN COVER bearing a sheet marginal example of the 12 pence.

A PRESENTABLE USAGE OF THE FAMOUS 12 PENCE STAMP ON COVER. THE FIRST TIME OFFERED PUBLICLY IN DECADES.

SEVEN AND ONE-HALF PENCE QUEEN VICTORIA

AN OUTSTANDING DIE ESSAY
OF THE UTMOST RARITY AND BEAUTY



- 9 E 9, 1857 7½p Queen Victoria Progressive Die Essay, engraved and printed in black on india paper 26 x 31mm; an outstanding item of UNIQUE status, portraying the famous "Chalon" portrait, issued for the Trans-Atlantic letter rate and showing conversion of the two currencies - Canadian 7½p currency equal to British 6p sterling; small area of natural india paper weakness hardly worth mentioning. A fabulous, one-of-kind essay, VF (Minuse & Pratt unlisted) **Est. 25,000.00+**

The near finished design. Small diamond shaped ornaments are visible in left and right oval separating "CANADA PACKET POSTAGE" from "SIX PENCE STERLING", which are not present on the issued stamp. The background shading lines are incomplete above "KE" of "PACKET", and at top of "g" in "6dstg" in upper and lower left corners, also the vertical and horizontal framelines do not intersect at bottom left.

Provenance: Henry Gates (Part 1), Maresch Sale 124, March 1981; Lot 384

Sam Nickle Collection, Christie's Robson Lowe, New York, March 1993; Lot 42

The "Lindemann" Collection (private treaty circa. 1997)

Literature: Illustrated and discussed in Arfken, Leggett, Firby & Steinhart "Canada's Pence Era The Pence Stamps and the Canadian Mail 1851-1859" handbook on page 59 (Figure 42).

Exhibited by Henry Gates at Capex 1978 and in the "Gems of Canadian Philately" Court of Honour.



A FABULOUS ENGRAVED 'CHALON' VIGNETTE DIE ESSAY IN BLACK



- 10 E 9, 1879 (circa.) "Six Pence Sterling" (7½p) Queen Victoria** Engraved "Goodall" Die Essay of the Chalon portrait and lettering, surrounded by cross-hatched lines, printed in black on india paper 25 x 28mm, die sunk on card 31 x 41mm; light card crease on reverse. A remarkable essay and highly desirable essay, VF (Minuse & Pratt 9Eb) **Est. 7,500.00+**

Provenance: The "Lindemann" Collection (private treaty circa. 1997)

AN IMPRESSIVE PLATE PROOF BLOCK WITH IMPRINTS



- 11 P 9P, 1857 7½p Queen Victoria Upper left corner margin plate proof block of 24 (6x4) in the issued colour on card mounted india paper; light diagonal crease on top left pair, otherwise brilliant fresh and choice, VF (Unitrade cat. \$8,400) Est. 2,500.00+

An interesting "Left Frame" plate flaw is visible on all four stamps in the second column.

“Indisputably one of the most important items of North America philately”
 -Weill Brothers’ Stock (1989)



Lot 12 (225% actual size)



detail of “1d Flaw Fraction – Triangle Flaw”

Census: We are aware of six mint multiples of the Seven and One-Half

- 1) Vertical pair with small **portion** of imprint, ex. Pack, Amos Eno, Lilly, Gross
- 2) Horizontal pair with sheet margin at top, gum creasing; ex. Robert Gill, Duane Hilmer
- 3) Horizontal pair with full plate imprint in top sheet margin, ex. Granger, Amundsen, Guilford, “Lindemann”, Brigham
- 4) Horizontal pair with sheet margin at left, tiny portion of imprint; ex. Maurice Burrus, E. Carey Fox, John Foxbridge (du Pont), The Weill Brothers, Brigham
- 5) The block of four, offered here
- 6) Horizontal strip of three with sheet margin at left, light crease; ex. Sir Gawaine Baillie, Foxbridge (John du Pont), Ralph Hart

THE EXTRAORDINARY "GILL" MINT BLOCK



- 12 ★ **9, 1857 7½p Green on Medium Wove Paper, Imperforate** The phenomenal, famous block of four, displaying with ample to large margins, top right outer frameline just touched, sealed tear at foot of lower left stamp. An exceptionally fresh block, displaying its original "bloom" as the day it was printed more than 160 years ago. Remarkably retaining full original gum, relatively lightly hinged, the lower right stamp appears to be NEVER HINGED. One of the Aristocrats of Canadian Philately, Very Fine, Lightly Hinged **Est. 100,000.00+**

The lower left stamp shows the "1d Flaw Fraction - Triangle Flaw" (Position 47) with a prominent Misplaced Entry in upper corner "6½dstg - 7½dcy" values (Unitrade 9iv). *Detail on previous page.*

Provenance: General Robert Gill, Robson Lowe Ltd., October 1965; Lot 41 - the third highest realization after the mint 12p pair and 10p block. Robson Lowe mentions in an article titled "Some Remarkable Stamps" published in 1965 and describes: "some of these unique unused blocks came from a collection found in the archives of a noble French family some 20 years ago. These were unearthed for the first time since the stamps had arrived in France. The blocks that are now in the Gill collection are the only ones that have ever been seen." This noble French family has been revealed as the Duc de Polignac who originally purchased these blocks from the post office at Montreal, (around circa. 1859).

E. Carey Fox, First Portion H.R. Harmer Inc., May 1968; Lot 355

Duane Hilmer, Sotheby Parke Bernet Stamp Auction, September 1977; Lot 112 – described "famous unique block of four... Great Rarity of Canadian Philately."

John Foxbridge (du Pont) Collection (private treaty, 1988) - original retail value US\$95,000.

The Weill Brothers, Christie's Robson Lowe, Zurich, November 1989; Lot 1545 - aptly described then as: "Indisputably one of the most important items of North America philately."

Literature: Illustrated in Robson Lowe "The Encyclopedia of British Empire Postage Stamps, Volume V - British North America" on page 165.

Illustrated and discussed in Arfken, Leggett, Firby, Steinhart "Canada's Pence Era - The Pence Stamps and the Canadian Mail 1851-1859" handbook on pages 77-78 (Figure 58)

Illustrated and discussed in Robson Lowe lecture to Edmonton Stamp Club "Some Remarkable Stamps", published in Canadian Philatelist, November - December 1965, Whole Number 91, Volume XVI, Number 6, pages 264-268.



**AN EXCEPTIONALLY FRESH AND CHOICE
ALLAN LINE LETTER RATE TO THE UNITED KINGDOM**



- 13 ☒ 1857 (August 1) Superb cover to Bristol, England, bearing an equally choice, very large margined 7½p green tied by four-ring '37' cancellation, well-struck Quebec double arc dispatch; on reverse two-line "BY CANADIAN / PACKET" straightline instructional marking in red and Bristol AU 13 1857 receiver. Without a doubt, one of the very finest and most attractive 7½ pence rate covers extant, XF (Unitrade 9) **Est. 7,500.00+**

The Earliest Usage of the 7½ pence stamp on cover and a fact observed in Arfken, Leggett, Firby & Steinhart "Canada's Pence Era - The Pence Stamps and the Canadian Mail 1851-1859" handbook on page 79. An important cover.

Expertization: 1984 BPA certificate

Provenance: Henry Schneider Collection of British America, Siegel, October 1996; Lot 52

The "Loch" Collection of Canadian Pence Issue, Firby Auctions, April 1999; Lot 155 - described as "SUPERB".

**A BEAUTIFUL AND RARE DOUBLE ALLAN LINE
CANADIAN PACKET LETTER RATE TO THE UNITED KINGDOM**



- 14 ☒ 1859 (August 6) Blue folded cover from Quebec to London, England, bearing two single 7½p green, both with clear to mostly large margins, attractively tied by four-ring '37' cancellation, Quebec double arc dispatch at foot, repaired opening tear at foot of envelope in no way detracts (not mentioned in previous name-sales it once graced). Small London Paid AU 17 59 CDS struck in red on arrival. An impressive 15 pence double Allan Line rate cover to England, quite possibly the finest of only five reported, VF (Unitrade 9) **Est. 10,000.00+**

Interestingly enough this cover was mailed five weeks (as of July 1st, 1859) following the introduction of the Decimal currency; 7½p stamps (equal to 12½ cents) were still valid, in this case paying the 25c rate.

Another remarkable feature of this important cover is the left-hand stamp, which shows the "Triangle Flaw" variety (Position 83).

Provenance: Charles deVolpi, Sissons Sale 239, October 1965; Lot 207 - by far the highest realization in part one deVolpi sale, bringing \$3,100 hammer; his impressive postal history collection was sold over a series of five sales in 1965-1966.

John Foxbridge (du Pont) Collection (private treaty, 1988)

Literature: Illustrated and discussed in Arfken, Leggett, Firby & Steinhart "Canada's Pence Era The Pence Stamps and the Canadian Mail 1851-1859" handbook on pages 263-264 (Figure 241) and listed as Cover No. 4 in Table 44. "Two-fold Allan Rate Covers to the U.K."

See Lot 129 for double Cunard Line Packet letter rate from the same correspondence.



Detail of "Triangle Flaw" variety (Pos. 83)



TWELVE AND ONE-HALF CENTS QUEEN VICTORIA

TWO HIGHLY DESIRABLE AND SELDOM OFFERED DIE PROOFS ONE IN THE CLOSEST COLOUR TO THE ISSUED STAMP



- 15 P 18, 1879 (circa.) 12½c Queen Victoria "Goodall" Die Proof, engraved, printed in bluish green on india paper 23 x 29mm die sunk on card 34 x 39mm, a beautiful proof in choice condition. Of the five known colours attributed to "Goodalls" this is the closest to the issued stamp, VF (Minuse & Pratt 18TC2g) **Est. 7,500.00+**

Provenance: The "Lindemann" Collection (private treaty, circa. 1997)



- 16 P 18, 1879 (circa.) 12½c Queen Victoria "Goodall" Die Proof, engraved, printed in brownish red on india paper 25 x 29mm, die sunk on card 34 x 39mm; a most appealing and very rare coloured die proof, VF (Minuse & Pratt 18TC2g) **Est. 7,500.00+**

Provenance: The "Lindemann" Collection (private treaty, circa. 1997)



- 17 **P 18Piii, 12½c Dark Yellow Green** A most elusive plate proof block on india paper with diagonal SPECIMEN overprints in black, sheet margin at foot. A superb block - certainly one of the largest surviving multiples with the diagonal specimen, XF **1,800.00+**

Provenance: The "Lindemann" Collection (private treaty, circa. 1997)

**A CHOICE PROOF BLOCK DISPLAYING
THE MOST PROMINENT PLATE VARIETY**



- 18 **P 18Pi + variety, 12½c Dark Yellow Green** An appealing plate proof block on card mounted india paper, vertical SPECIMEN overprint in carmine, part sheet margin at foot, tiny scissor cut entirely confined to margin at right pair, shows the **Major Re-entry** (Position 94) on lower right proof with characteristic doubling in first "E" of "PENCE" and very noticeable in and around "TAGE" of "POSTAGE"; the best known and most prominent plate variety found on this denomination, VF (Unitrade cat. as normal proofs) **1,200.00+**

Provenance: The "Lindemann" Collection (private treaty, circa. 1997)



- 19 P 18P shade, 12½c Yellowish Green Plate proof pair in issued colour on india paper - distinctive from the usual blue green and darker yellow green shades usually seen, VF **700.00**



- 20 P 18TCv, 12½c Queen Victoria An elusive trial colour plate proof pair, printed in black on india paper with vertical SPECIMEN (Type A) overprint in carmine, large even margins all around, originating from the sole sheet printed in black of which only five columns (50 proofs) received the Type A overprint; very scarce as a pair, VF+ **1,300.00+**

Provenance: The "Lindemann" Collection (private treaty, circa. 1997)

**A SUPERB AND BRILLIANT PLATE PROOF
SHOWING THE BEST-KNOWN MAJOR RE-ENTRY**



- 21 P 18TCix + variety, 1859 12½c Queen Victoria Trial colour plate proof in immaculate condition, printed in black on india paper, large to enormous margins, shows the **Major Re-entry** (Position 94) with distinctive traits clearly visible such as doubling in first "E" of "PENCE", in and around "TAGE" of "POSTAGE", among other characteristics which are not readily visible on other coloured proofs and even less so on the issued stamp. A fabulous proof for the advanced collector, XF **Est. 1,000.00+**

Provenance: Henry Gates Collection of Cents Issue Proofs, Siegel, March 1989; Lot 301

The "Lindemann" Collection (private treaty, circa. 1997)

AN ATTRACTIVE LARGE MARGINED
IMPERFORATE BLOCK ON WOVE PAPER



- 22 ★ **18b, 1867 12½c Blue Green on Medium Wove Paper, Imperforate** A very scarce, choice mint block with the characteristic colour and impression associated with the imperforates on wove paper; small scissor cuts at both ends entirely confined to margin between horizontal pairs. Large margins all around unlike many of the known multiples, ungummed as normally encountered; an attractive block, VF
- 20,000.00**

Expertization: 1987 Greene Foundation certificate (identified as old CS number 16)

Provenance: General Robert Gill, Robson Lowe Ltd, October 1965; Lot 69

Art Leggett Cents Issue Exhibit Collection (private sale)

The "Lindemann" Collection (private treaty, circa. 1997)



Lot 23 (actual size 175%)

**A VERY IMPRESSIVE MINT BLOCK OF EIGHT
SHOWING IMPRINT AND TWO DOCUMENTED PLATE VARIETIES**



- 23 ★ **18a, vii, 1867 12½c Blue Green, Perf 12** The spectacular mint block of eight (Positions 61-64 / 71-74), likely THE LARGEST SURVIVING MINT MULTIPLE OF THE TWELVE AND ONE HALF CENT, excellent bright colour on fresh paper and showing complete ABNC imprint in the left margin; diagonal crease on left pair ending in a tiny tear at upper left, small tear on positions 63 and 72. The block features two of the three listed plate varieties - **Major Re-entries at Positions 61 and 62** (top left pair). Well centered for the issue with superb colour and impression, intact perforations and showing large part to full original gum, mainly lightly hinged. An extraordinary mint block - the largest we were able to find during our extensive research, VF OG (Unitrade; cat. \$37,500) **Est. 25,000.00+**

Provenance: Guilford Collection, Siegel Auctions, September 1994; Lot 2188

The "Lindemann" Collection (private treaty, circa. 1997)



- 24 ★ 18iii, 1863-1864 12½c Dark Yellow Green on Thick Paper, Perf 12x11¾ A well centered unused example of this difficult stamp displaying amazing colour on distinctive thick white wove paper (0.004" thick); small ink mark on reverse. A beautiful stamp on this **elusive paper type**, VF **3,000.00**

Expertization: clear 1992 Greene Foundation certificate "Scott No. 18, unused variety on thick paper, genuine in all respects."

Provenance: The "Lindemann" Collection (private treaty, circa. 1997)

**THE MAJOR RE-ENTRY
QUITE POSSIBLY THE FINEST KNOWN MINT EXAMPLE**



- 25 ★ **18iv, 1865-1867 12½c Yellowish Green, Perf 12** An outstanding mint single in a lovely bright shade on fresh paper, showing the sought-after **Major Re-entry** (Position 94) with noticeable doubling in first "E" of "PENCE", in and around "TAGE" of "POSTAGE", etc. Superb centering within remarkably large margins and possessing large part OG. Without a doubt one of the very finest mint examples extant - very few can exist showing this major plate variety - the best known and most prominent on this stamp, VF+ OG **7,500.00**

Provenance: The "Lindemann" Collection (private treaty, circa. 1997)



detail

**A VERY SCARCE 25-CENT LETTER RATE
TO THE COLONY OF VANCOUVER ISLAND**



- 26 ☒ 1863 (February 4) Cover from Prescott, U.C. to Victoria, **Colony of Vancouver Island**, bearing a horizontal pair of 12½c olive green, perf 11¾, nicely centered, light crease along perfs of right stamp, nicely tied by four-ring '35' cancels of Prescott (RF-5), clear double arc dispatch at left, Ogdensburg, N.Y. FEB 5 1863 U.S. transit CDS attractively struck at left and docketing by receiver "Received March 17th 63", a total of 41 days in transit, in all probability via New York, then by ship to Aspinwall and across the Panamanian isthmus by rail to Panama City, then by steamer along Western Coast via San Francisco. Light overall soiling, edge wrinkling and slightly reduced at left. A Fine, very scarce and well-travelled 25c letter rate cover to Vancouver Island. (Unitrade 18i) **Est. 2,000.00+**

Census: This is Cover No. 6 listed in Table 2 "Decimal Covers to Vancouver Island and British Columbia - 25¢ Rate, January 1862 - June 1864. in Arfken & Leggett "Canada's Decimal Era 1859-1868" handbook on page 115. Of the 15 covers tabulated, twelve are to Vancouver Island.

Interesting enough Prescott, Upper Canada four-ring numeral '35' shares the same number employed by Victoria, V.I. grid numeral system.



**HISTORICAL COVER MAILED BY GEORGE BROWN
PRESIDENT OF EXECUTIVE COUNCIL
OF THE FATHERS' OF CONFEDERATION**



- 27 ☒ 1864 (September 24) Blue envelope with red cameo embossed Executive Council "Crown" Canada seal on backflap, various faults and wrinkling to cover and franking due to heavy content, pays a quadruple Allan Line - Canadian Packet letter rate to United Kingdom with a block of 12½c green, perf 12x11¾ tied by concentric rings, clear Quebec SP 24 64 CDS, endorsed "P. Canadian Steamer 24 Sept '64" with signature of "George Brown, Prest. Ex. Council" at left and addressed to his wife in Edinburgh, Scotland, OC 10 64 CDS receiver on back; manuscript docketing by the receiver "Speech of Confederation - Meeting the Earl of Airlie". One of only two recorded 12½c (x4) rated covers to the United Kingdom. (Unitrade 18) Est. 3,500.00+

George Brown was President of the Executive Council, one of the Fathers' of Confederation. Important historical context of this cover (along with transcript of the original letter sent to his wife) has been written by Peter Hurst in BNA Topics, February 1957, Whole 143, Vol. 14, No. 2, pages 35-39 - photocopies of the article enclosed. This cover was sent three weeks after the Charlottetown Conference and further delegate meetings in Nova Scotia and New Brunswick. In the words of Peter Hurst: "the grand scheme of Canadian unity had matured in his mind by the time he arrived in Quebec, ready to put the outline of proposed Confederation into writing."

Provenance: Art Leggett Cents Issue Exhibit Collection (private sale)

The "Lindemann" Collection (private treaty circa. 1997)

Literature: Subject of article "A George Brown Cover, Part 3" by George Arfken, BNA Topics, Whole 448, Vol. 49, No. 2, March - April 1992, page 31

Subject of a detailed article "Herald of Confederation" by Peter Hurst, BNA Topics, Whole 143, Vol. 14, No. 2 - February 1957, pages 35-39.

Illustrated and discussed in Arfken & Leggett "Canada's Decimal Era 1859-1868" handbook on pages 129-130 (Figure 2).

A VERY SIGNIFICANT COVER WHICH CONTAINED THE ORIGINAL OUTLINE OF WHAT WAS TO BECOME THE BRITISH NORTH AMERICA ACT, CANADA'S CONSTITUTION.

THE HIGHEST RECORDED DECIMAL FRANKING



- 28 ☒ Undated (post-February 1866) large part cover from Superior Court, Lower Canada with albino embossed "Coat of Arms" red seal mailed in all likelihood to Great Britain by Canadian Packet; pays an extraordinary \$1.70½ rate, thirteen-fold Allan Line - Canadian Packet rate (up to 6.5 ounces) with block of six, a block of four and irregular block of three, bottom stamp of latter shows the **Major Re-entry** (Position 94) plus 8 cent registration (in effect as of February 1, 1866) paid with 5 cent Beaver and three 1c rose, all tied or cancelled by large grids, straightline REGISTERED in red above 12½ cent block; couple cover folds through five stamps, but in decent overall shape considering the heavy content carried. A real "show-stopper" - not only the largest reported franking of 12½c stamps but also the highest Decimal Issue franking according to the Firby census - an important item for anyone attempting to build a "Gold-Medal" collection, Fine (Unitrade 14, 15, 18, 18iv) **Est. 5,000.00+**

The next two highest frankings are \$1.50 for 12 times Allan Line rate to the U.K. and \$1.37 for 27 times domestic rate, plus 2 cent registration).

Provenance: BNA Sale, Robson Lowe Ltd., January 1964; Lot 1192

Charles deVolpi, Sissons Sale 250, June 1966, Lot 310

Arthur Groten, Maresch Sale 133, September 1981; Lot 419

Sam Nickle, Christie's Robson Lowe, New York, March 1993; Lot 681

Census: This is Cover No. 9 listed in Table 1 "Allan Packet 12½¢ Rate, Registration 8¢" in Arfken & Leggett "Canada's Decimal Era 1859-1868" handbook on page 181; and discussed on pages 183-185.



THREE PENCE BEAVER

PLATE IMPRINT PROOF BLOCK
DISPLAYING THREE DIFFERENT VARIETIES



29 P 1P + varieties, 3p Red A corner margin plate proof block of twenty-five from Pane A in the issued colour on india paper, Rawdon, Wright, Hatch & Edson, New York imprints on two sides (1857 printing), displaying known **Re-entries at Positions 33 & 34** as well as the **Cracked Plate variety at Position 31** also known as "Railway Tracks"; small flaw in lower corner proofs and below Pos 44. An appealing block, VF (Unitrade cat. \$8,750 as normal single proofs) **Est. 3,500.00+**

Provenance: Dale-Lichtenstein, Sale 2 - British North America Part One, H.R. Harmer, Inc., November 1968; Lot 7

Clayton Huff (Part 1), Maresch Sale 194, December 1986; Lot 1067

Details of Pane A Positional Varieties



Pos. 31



Pos. 33



Pos. 34



- 30 P 1TCi, 3p Red A corner margin plate proof block of nine (Plate A Position 8-10 / 28-30) printed in the issued colour on card mounted india paper, horizontal SPECIMEN overprint in green; without plate imprint proving it originated pre-1856 (imprints were added starting with the printing order of October 1856), large margined and VF 2,700.00

Provenance: The "Lindemann" Collection (private treaty, circa. 1997)



- 31 P 1TC + variety, 3p Red Plate proof pair on india paper with horizontal SPECIMEN overprint in carmine, right proof shows Major Re-entry (Pane B; Position 65) with extensive doubling through much of the lettering, the central "Crown" and other traits, choice, VF 1,000.00+



- 35 ☒ **Six Letter Rate to the United States 1851** (September 10) Blue folded cover from Hamilton to New York, bearing two singles of the 3p orange red shade on handmade laid paper with prominent laid lines, just clear to large margins, small sealed tear at upper left of left stamp, both tied by superb, visually striking concentric rings IN BLUE with same-ink Hamilton double arc dispatch, light arc CANADA and PAID / 10 border exchange handstamps in red. A very scarce usage of the 3p Beaver paying the 6p rate to the US, F-VF (Unitrade 1a) **Est. 2,500.00+**



- 36 ☒ **Early Usage of Three Pence Beaver on Laid Paper on Mourning Cover 1851** (November 22) Small mourning cover with letter enclosure, bearing 3p red on handmade laid paper with adequate margins except barely touching frameline at top, paying the domestic letter rate to Georgeville C.E., negligible surface scrape to stamp which is neatly tied by concentric rings, clear Montreal double arc dispatch CDS in red, St. John L.C. transit and Georgeville stampless era double ring receiver in red with "Nov. 26" filled-in date, an appealing, early usage of the 3 pence, F-VF (Unitrade 1) **Est. 1,500.00+**

Expertization: 1998 PF certificate



A VERY SCARCE AND DESIRABLE PLATE POSITIONAL PANE B POSITIONS 1 & 2 MINT PAIR



- 37 ★ **4iv, 1854 3p Orange Red on Thin Oily Paper, Imperforate** A seldom seen mint pair of this distinctive paper type with characteristic blurry print, deep colour and large margins, diagonal and vertical creasing, large part original gum, a very scarce multiple with VF appearance (Unitrade cat. \$10,000) **Est. 3,000.00+**

Plated by Clayton Huff with his pencil annotation on back "PP B1+2" on reverse.

Provenance: Leland Powers Pence Issues of Canada, Kelleher Sale 461, March 1955; Lot 70

General Robert Gill, Robson Lowe Ltd., October 1965; Lot 13

Clayton Huff (Part 4), Maresch Sale 207, November 1987; Lot 40

RARE UNUSED DUO DISPLAYING ELUSIVE VARIETIES



38



39

- 38 ★ **4xiii, 1857-1858 3p Red on Medium Wove Paper, Imperforate** An unused example of the **Major Re-entry** (Pane A, Position 80) with very prominent doubling in "THREE PENCE", upper and lower left "3"s and other traits, small or clear margins all around, vertical and pressed horizontal creases, the latter not readily discernible. A very presentable unused example of this rarely seen plate variety, Fine (Unitrade unpriced in unused condition) **Est. 500.00+**

Provenance: Dale-Lichtenstein, Sale 7 - British North America Part Three, H.R. Harmer, Inc., January 1970; Lot 593

Clayton Huff (Part 4), Maresch Sale 207, November 1987; Lot 20

- 39 ★ **4i, x, 1857 3p Deep Red on Medium Wove Paper, Imperforate** A very scarce unused example clearly showing a **Vertical Stitch Watermark** at left, readily visible without the need of watermark fluid, deep shade on bright fresh paper, very large margins on two sides, clear to barely touching design on others. One of the few existing unused 3 pence stamp with Stitch Watermark variety, Fine (Unitrade cat. \$2,500) **Est. 1,000.00+**



- 40 □ **Bisect Usage for 7½ Pence Rate to United Kingdom** A diagonal bisect of the 3 pence red used as 1½p and clearly tied by "tombstone" Pkt Letter Paid Liverpool U 6 56 transit in red, placed alongside a 6p greenish grey on medium wove paper, cut in at top left, Fine (Unitrade 4b, 5b) **Est. 2,500.00+**

Effective May 1856, the Trans-Atlantic letter rate was reduced to 7½p currency for Canadian Packet - Allan Line mail to the U.K. For a short-period, no 7½p stamp was available; one of the methods of prepayment of the this new rate was to bisect the current 3p stamp. Three or four covers exist with the bisected 3p and a pair of 3p for the 7½ pence rate. No cover exists with the combination offered here.

Provenance: Dale-Lichtenstein, Sale 5 - British North America, Part Two, H.R. Harmer, Inc., New York, May 1969; Lot 430

Sam Nickle Collection, Firby Auctions, Firby Auctions, October 1988; Lot 316

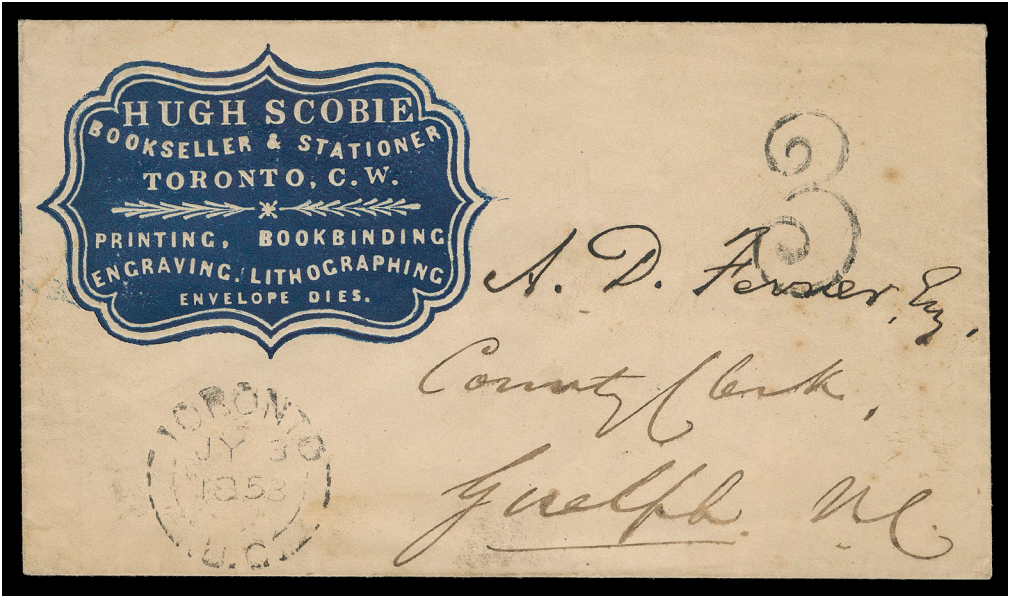
Literature: Illustrated in Winthrop Boggs "The Postage Stamps and Postal History of Canada" handbook on page 165.



- 41 ☒ **Very Early Printing on Wove Paper - Beautiful Usage to the United States** 1852 (October 27) Folded cover from the well-known Kennedy correspondence bearing two select 3p red on medium wove paper, imperforate, each large margined with amazing deep colour and sharp impression for such an early printing, neat concentric rings cancels, Montreal double arc dispatch in red, sent to New York, border exchange office arc CANADA in red, couple light file folds, one through right stamp; a beautiful cover of wonderful appeal, VF (Unitrade 4 early printing) **Est. 750.00+**

Provenance: Kasimir Bileski Pence Issue Collection, Eaton & Sons, June 1995; Lot 229

Literature: Interesting article in BNA Topics Whole 87, Volume 9, No. 1, pages 19-20, pertaining to this cover.



- 42 ☒ **Hugh Scobie Cameo Advertising Cover 1853 (July 3)** Dark blue embossed cameo "Hugh Scobie, Bookseller & Stationer, Printing, Bookbinding, Engraving, Lithographing Envelope Dies" advertising envelope, large "3" rate handstamp (to collect), mailed from Toronto with double arc dispatch at left and partial Guelph receiver backstamp. An attractive and early Cameo embossed advertising cover, VF **Est. 350.00+**

Provenance: Vincent G. Greene Collection with his backstamp

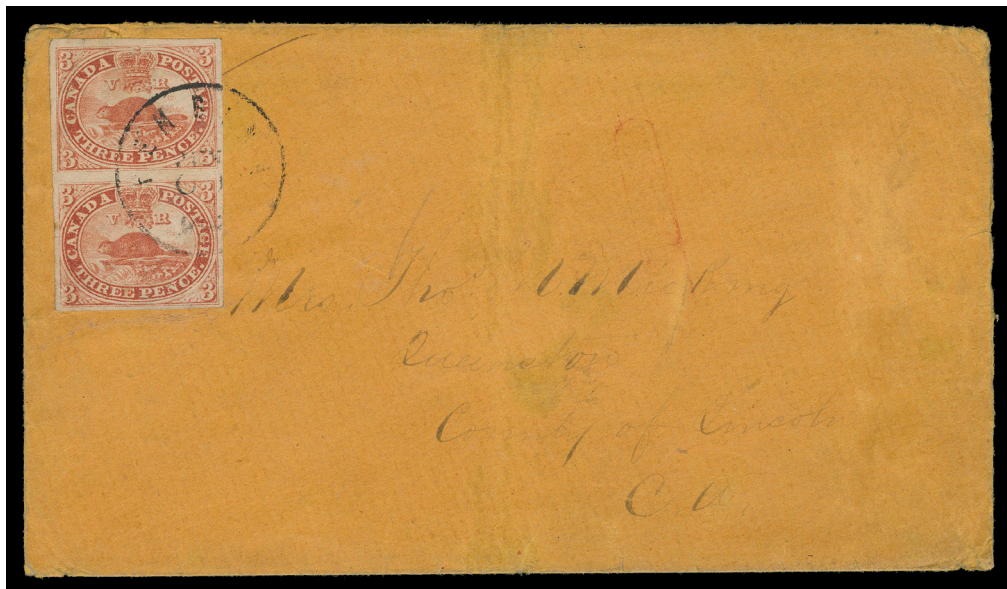
Hugh Scobie, lithographer of Toronto, may have played an instrumental part in the famous Sir Sandford Fleming 3p Venetian Red essay, which is attributed to printers Ellis of Toronto. The essay may have been prepared by Scobie, under the direction of Postmaster General Morris.




- 43 ☒ **Very Pretty and Clean Three Pence Registered Cover 1858 (December 20)** Small white envelope in immaculate fresh condition mailed registered to Whitby, bearing a 3p red on medium wove paper with fabulous colour, barely touching frame at top to large margins and tied by diamond grid, Toronto split ring dispatch and straightline REGISTERED handstamp in red. An appealing 3 pence domestic letter rate, the 1 penny registration fee paid in cash as customary, VF (Unitrade 4) **Est. 1,000.00+**

Provenance: The "Harbour" Collection of Pence, Firby Auctions, May 1996; Lot 24

**RED RIVER SETTLEMENT
PENCE COVER TO UPPER CANADA
ONE OF ONLY TWO KNOWN**



- 44  1860 (June 3) A spectacular cover from the Red River Settlement, via Pembina, United States, bearing a vertical pair of 3p red on ribbed, hard wove paper tied by Pembina CDS in transit, light Queenston, U.C. addressee, minute tear at left on lower stamp; on reverse Windsor transit and Queenston JUN 24 arrival backstamps. A very rare Pence cover from the Red River Settlement, F-VF (Unitrade 4iii)

Est. 10,000.00+

Provenance: Graham Fairbanks, Sissons Sale 259, April 1967; Lot 158

Charles deVolpi Fur Trade Collection, Maresch Sale 140, May 1982; Lot 103 - sold for an impressive \$8,000 hammer against a pre-sale estimate of \$5,000.

Ed Richardson, Canadian Postal History, Firby Auctions, November 1991; Lot 513 - sold for US\$8,500.

Census: The Wayne Smith Pence cover census (as of January 2022) lists only two covers from Red River; the other is franked with two single 3 pence red tied by Pembina APR 27 (1862) cancel and mailed to Ottawa and forwarded to Almonte (ex. Jarrett, Nickle, K.L. Collection, Risvold) last sold Eastern Auctions Ltd. February 2014 sale - Lot 720, realized \$19,000 hammer.

On July 9, 1858, the Post Office Department contracted a mail service to Fort William and onward to the Red River Settlement, which was owned by the Hudson's Bay Company. The contractor was supplied with pence issue stamps of the Province of Canada, to be distributed to the various Post Offices. James Ross was appointed Postmaster at Fort Garry and Pence stamps were sold in the Settlement. These were the only stamps used in Fort Garry until the acquisition of the Hudson's Bay Territories by Canada in 1869. The contracted mail service to the Settlement was ended during the winter of 1861, after which the Settlement became dependent on the U.S. Post Office at Pembina, Minnesota Territory for service.



FIVE CENT BEAVER

GOODALL DIE PROOFS
AN ELUSIVE DUO



- 45 P 15, 1879 (circa.) 5c Beaver "Goodall" Die Proof, engraved, printed in dark yellowish brown on india paper 31 x 24, die sunk on slightly larger card measuring 44 x 27mm; minor mark from previous mounting on reverse, a very rare and highly attractive die proof, VF (Minuse & Pratt 15TC2g)
Est. 5,000.00+

Provenance: Henry Gates, Cents Issue Proofs, Siegel, March 1989; Lot 222

The "Lindemann" Collection (private treaty, circa. 1997)



- 46 P 15, 1879 (circa.) 5c Beaver "Goodall" Die Proof, engraved, printed in greenish blue on india paper 31 x 23mm; slight trace of foxing at top, a very rare coloured die proof, VF (Minuse & Pratt 15TC2g)
Est. 5,000.00+

Provenance: Arthur Groten, Maresch Sale 132, September 1981; Lot 129

The "Lindemann" Collection (private treaty, circa. 1997)

Also includes the original ABNC card (34 x 27mm) this proof was initially die sunk onto.



WELL DOCUMENTED PLATE VARIETIES
FROM TWO DIFFERENT STATES OF THE FIVE CENT PLATE



48



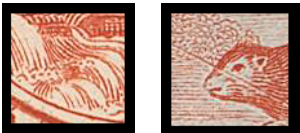
49

- 48 P 15P + varieties, 1867 5c Vermilion A beautiful plate proof block of ten (2x5), Positions 53-54 / 93-94, in the issued colour on card mounted india paper, full ABNC imprint at foot and two constant plate varieties - the "Rock in Waterfall" (Position 53) and Strong Re-entry (Position 83) with doubling in several letters, surrounding oval, etc.; both varieties are found only on State 10 of the plate (last printing). Choice and VF **3,000.00+**

Provenance: The "Lindemann" Collection (private treaty, circa. 1997)

- 49 P 15TC + variety, 1863 (circa.) 5c Beaver Trial colour plate proof strip of four in orange vermillion on india, ample margins except slightly in outer frameline, shows the "Split Beaver" variety on lower proof (Position 90) that only appeared on State 4 of the plate, printed in 1863. Very rarely seen on a proof as it was very short-lived and not present on the bulk of plate proofs in vermillion printed in 1867 (State 10). A great item for the specialist, Fine **Est. 1,000.00+**

Provenance: The "Lindemann" Collection (private treaty, circa. 1997)



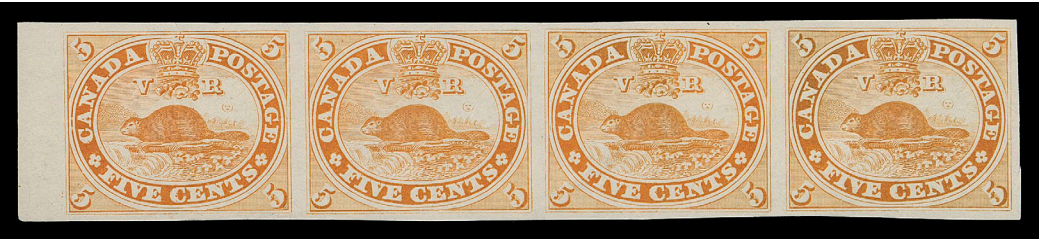
detail of Pos. 53 and 90 varieties



- 50 P 15P + variety, 1867 5c Vermilion Horizontal plate proof pair in the issued colour on india, right proof shows the Major Re-entry (State 10; Position 28) with prominent doubling of many design features; small tear at top of left proof only, VF Est. 500.00+



- 51 P 15TCvii, 1859 5c Beaver Superb trial colour plate proof block printed in black on india paper, displaying exceptionally strong colour and impression; no 5c proofs in black were present in th 1990 ABNC sale. Very scarce and especially desirable in such premium condition, XF 3,200.00+



- 52 P 15TCviii, 1864 (circa.) 5c Beaver Trial colour plate proof strip of four in orange yellow on india, sheet margin at left, tiny scissor cut in margin at right, otherwise sound, a scarce multiple, VF 2,400.00

“An exceptionally interesting piece”
-Dale-Lichtenstein sale 10 (1970)



Lot 53 (150% actual size)

**A FABULOUS MINT MULTIPLE
ONE OF THE LARGEST SURVIVING FIVE CENT BEAVER MINT BLOCKS**



- 53 ★ 15, 1866 (circa.) 5c Bright Vermilion, Perf 12** An eye-catching mint block of nine, ABNC imprint in lower margin, diagonal crease on lower right pair, marginal soiling and small fault at lower right, the other seven stamps in sound condition; FULL ORIGINAL GUM hinged or lightly hinged on six stamps and NEVER HINGED on three - the left pair of the centre row and top right stamp. A very rare and impressive large multiple of this popular classic stamp. **Est. 7,500.00+**

This block originates from State 8 of the plate (Positions 73-75 / 93-95) with known **Re-entries** shown at Positions 75 & 83.

Provenance: Dale-Lichtenstein, Sale 10 - Canada, H.R. Harmer, Inc., December 1970; Lot 355

Fred Goodhelpsen Collection (private sale)

Arthur Groten, Maresch Sale 132, September 1981; Lot 148

Sam Nickle, Christie's Robson Lowe, New York, March 1993; Lot 243

The "Lindemann" Collection (private treaty, circa. 1997)

Searching for comparable multiples of the 5 cent Beaver we were able to find:

1) a nicely centered mint NH block of nine, from Vincent Graves Greene Collection (February 1975; Lot 215), Arthur Groten (September 1981; Lot 147), Art Leggett Cents Issue Exhibit collection (private sale), "Lindemann" Collection (private treaty, circa. 1997), Ron Brigham Province of Canada, Part I (March 2023; Lot 33)

2) a nicely centered mint OG block of nine with bends, from Dale-Lichtenstein (Sale 2 - BNA Part One, November 1968; Lot 323), "Carrington" (June 2002; Lot 3307), Specialized Pence & Cents (Eastern Auctions, June 2018; Lot 400)

3) an off-centered unused block of ten with faults from Fred Jarrett "Canada 1859-1864" Collection (December 1959; Lot 52), Norman Brassler (October 1990; Lot 130), Ron Brigham, Province of Canada Part II (August 2023; Lot 24)



THE “DALE-LICHTENSTEIN” PAIR
THE CHOICEST MINT EXAMPLE OF THE MAJOR RE-ENTRY



- 54 ★ 15, 15v, 1867 5c Vermilion, Perf 12 The impressive "Dale-Lichtenstein" mint pair showing the sought-after **Major Re-entry** (Position 28; State 10) on the right-hand stamp, gorgeous bright colour that ideally accentuates the strong doubling throughout the design; a few immaterial split perfs strengthened by a hinge, large part original gum. A particularly rare plate variety in mint condition, very well centered and quite possibly the finest in existence, VF OG **10,000.00+**

Provenance: Dale-Lichtenstein, Sale 7 - British North America Part Three, H.R. Harmer, Inc., January 1970; Lot 977 - sold for US\$480, sixteen times the catalogue value at that time for a basic 5c mint single.

Capex 1987 auction, Maresch Sale 206, June 1987; Lot 100

The "Lindemann" Collection (private treaty, circa. 1997)



- 55 ★ 15, 1865-1868 5c Deep Vermilion, Perf 12 A left margin mint pair, quite well centered with rich colour, crease in margin only, minor rust mark from paper clip on top stamp, remarkably full original gum, showing barest trace of a hinging, F-VF VLH **3,000.00**

Expertization: 1988 BPA certificate

Provenance: The "Lindemann" Collection (private treaty, circa. 1997)



- 56 ☒ **Welcome to Canada "Prince Albert" Patriotic Cover 1860** (August 17) Prince Albert in Military Uniform "Welcome to Canada" illustrated patriotic cover, franked with an early printing 5c deep vermilion, perf 11¼, tied by concentric rings, light gum staining around stampg, clear Montreal double arc dispatch, addressed to Smiths Falls; light wrinkling at left and slightly reduced at right, nevertheless a beautiful cover - one of the very few known Prince Albert patriotic covers, F-VF (Unitrade 15 early printing) Est. 2,000.00+

Literature: Illustrated and discussed in Arfken & Leggett "Canada's Decimal Era 1859-1868" handbook on pages 15-16 (Figure 10).



- 57 ☒ **"Blood Money" U.S. Anti-South Civil War Cover 1861** (June 24) "Blood Money or How Southern Rebels Encourage Piracy" illustrated cover, damaged, overall aged and stained, nevertheless a most interesting anti-South printed message and script which reads "First Pirate to Jeff Davis - "We want our \$25 for this live Northerner"; followed by "Second Pirate to " - "Yes and I want \$25 for this dead one". Franked with three faulty pairs of 5c vermilion, perf 11¼ cancelled by grids, Toronto split ring dispatch, paying a triple (30 cents) U.S. letter rate to New Berlin, New York, Fine (Unitrade 15 early printing) Est. 500.00+



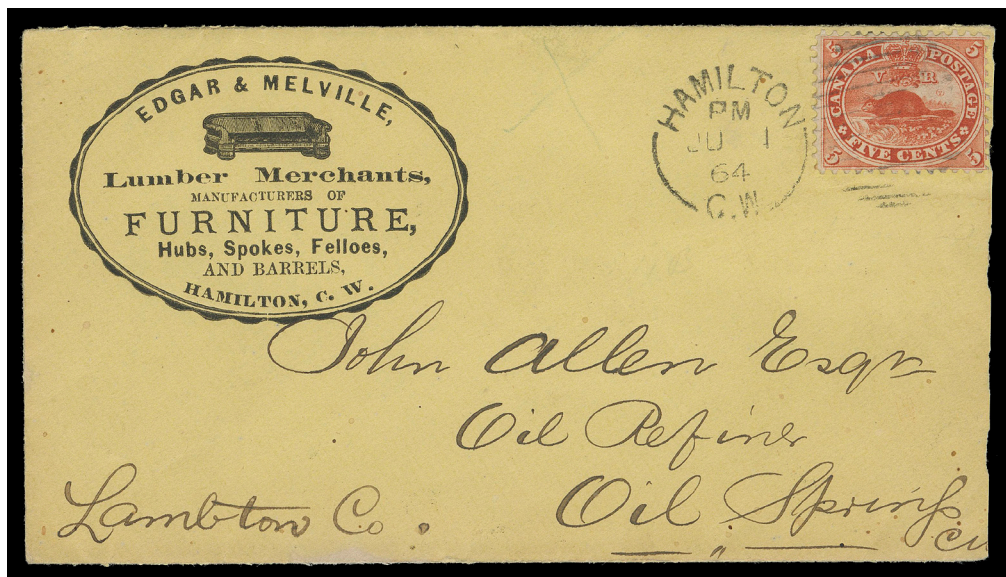
- 58 ☒ **Boots, Shoes & Leather Cameo Advertising Cover** 1861 (May 25) Brown & Childs, Manufacturers & Wholesale Dealers in Boots, Shoes & Leather, Montreal, dark blue embossed cameo advertising on a lovely orange cover, bearing a 5c pale vermilion, perf 11¾, tiny corner crease at right, light central concentric rings, neat Little Rideau, U.C. double arc dispatch with filled-in "May 25/61" date, shortpays by the 5 cents letter to Chicago, straightline "CANADA 10" border exchange office handstamp with postage due "10" to collect from recipient as letter was inadvertently addressed "Chicago, C.W."; on reverse City of Ottawa D 26 MAY 1861 large circular, somewhat blurry RPO large CDS and light Windsor MY 29 transits. A very attractive and colourful Cameo advertising cover, VF (Unitrade 15)

Est. 500.00+



- 59 ☒ **Hotel Advertising Cover** 1862 (July 16) Russell's Hotel, Palace Street Upper Town, Quebec red cameo embossed advertising envelope addressed locally bearing a 5c vermilion, perf 12 (unusual early usage of this perforation gauge) tied by concentric rings, clear Quebec split ring dispatch; portion of backflap missing. An unusually clean and fresh Hotel cover. Not realizing that only 1 cent postage was needed for a local drop letter, the sender used a 5 cent. A neat cover backstamped by well-known collector of the past "Vincent G. Greene / Toronto", VF (Unitrade 15)

Est. 350.00+



- 60 ☒ **Illustrated Furniture Advertising Cover 1864 (June 1)** Edgar & Melville, Lumber Merchants, Manufacturers of Furniture, Hubs, Spokes, Felloes and Barrels, Hamilton, illustrated advertising on yellow envelope with additional illustration of a building on reverse, bearing 5c vermilion, perf 11½x12 tied by Hamilton duplex dispatch to Oil Springs, C.W., on reverse G.W.R. Sarnia Branch RPO split ring transit and Oil Springs JU 3 arrival datestamps, opened on three sides and couple folds to backflap only away from illustration. A lovely and visually striking cover, VF (Unitrade 15) **Est. 500.00+**



- 61 ☒ **Britannia Illustrated Advertising Cover 1866 (April 9)** Grand Lodge of British American O.G.T. "Britannia" illustrated yellow envelope franked with 5c vermilion, perf 12 cancelled by cork, faint Mitchell, C.W. AP 9 split ring at foot, addressed to Apohaqui, NB; slightly reduced at right. Pays the Interprovincial letter rate to New Brunswick, Montreal, Saint John, NB, Sussex Vale, NB transits and W.O. Mouth of Millstream Way Office arrival postmark with filled-in date "April 14/66", attractive, F-VF (Unitrade 15) **Est. 350.00+**

Way Office Mouth of Millstream name changed to Apohaqui in 1868.



SIX PENCE PRINCE CONSORT



62 P 2TCvii, 6p Prince Consort Trial colour plate proof block of thirty (6x5) printed in dark grey on card mounted india paper, vertical SPECIMEN overprint in carmine. A very scarce multiple that is among the largest extant, VF (Unitrade cat. \$9,000) Est. 3,000.00+



63 P 2TCii, 6p Prince Consort A beautiful trial colour plate proof block of eight printed in orange yellow on india paper; rarely seen coloured in such a large multiple, VF 3,600.00



- 64 P 2TCxi, 6p Prince Consort A corner margin trial colour plate proof block printed in grey blue on card mounted india paper, vertical SPECIMEN overprint in carmine; engraver's positional pin at lower left corner for specimen overprint setting, attractive, VF 2,000.00



- 65 P 2TCx, 6p Prince Consort A trial colour plate proof block printed in black on india paper, vertical SPECIMEN overprint in orange, VF 1,500.00

Provenance: Henry Gates (Part 1), Maresch Sale 124, March 1981; Lot 251

The "Lindemann" Collection (private treaty, circa. 1997)



**A RARE SIX PENCE ON LAID PAPER MULTIPLE
NICELY POSTMARKED WITH CONCENTRIC RINGS**



- 66 □ 2, 1851 6p Slate Violet on Handmade Laid Paper, Imperforate** A rarely seen used horizontal strip of three of this first issue on laid paper, visible laid lines and fabulous colour on fresh paper, surrounded by clear to mostly large margins; tiny nick at top left, nicely used with centrally struck concentric rings, F-VF **Est. 5,000.00+**

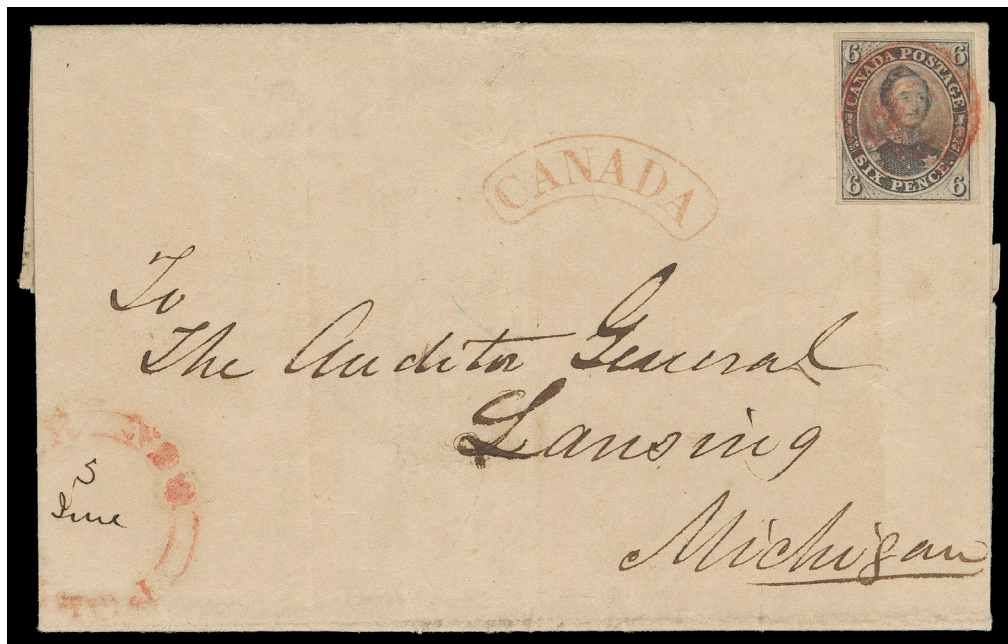
Expertization: 2003 Greene Foundation certificate

Provenance: North America Sale, Harmer, Rooke & Co. October 1965; Lot 27

Guilford Collection of Canada Pence Issues, Siegel, September 1994; Lot 2036

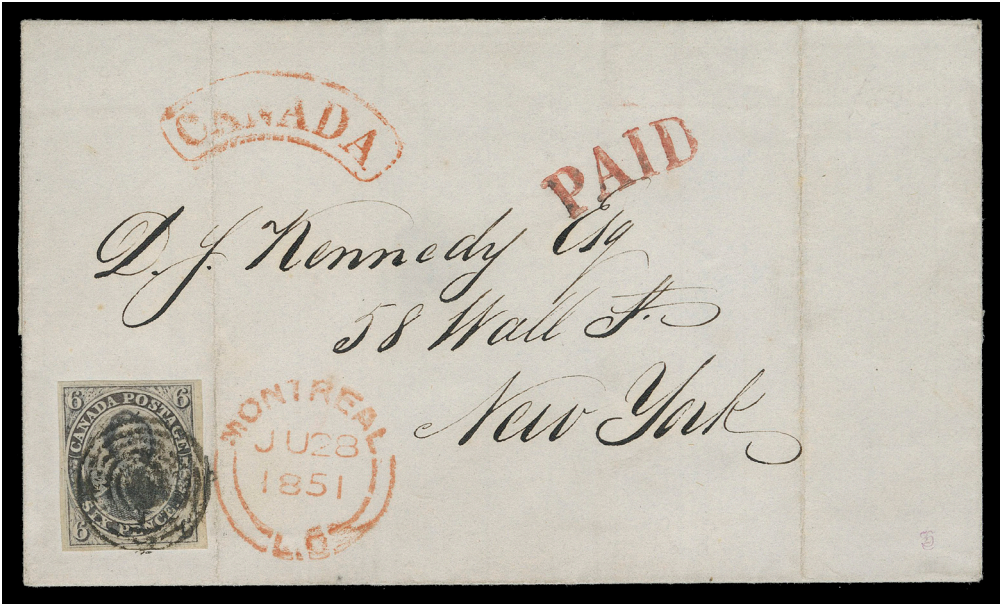
Literature: Illustrated in Robson Lowe "The Encyclopedia of British Empire Postage Stamps Volume V - British North America" on page 167.

**A VERY EARLY USAGE OF FIRST ISSUED SIX PENCE ON LAID PAPER
ATTRACTIVELY POSTMARKED IN RED**



- 67 ☒ 1851 (June 5) Cover mailed from Port Dover to Lansing, Michigan, bearing 6p slate violet, deep shade on laid paper with adequate margins, light file fold through, tied by concentric rings cancellation IN BRIGHT RED with same-ink Port Dover double arc dispatch with filled-in date "5 June", clear Simcoe JU 3, Brantford (in blue) JU 3 1851, partially legible London JUN 4 transit backstamps. A very scarce coloured cancelled cover mailed less than four weeks after the 6 pence came into circulation, F-VF (Unitrade 2) **Est. 3,000.00+**

Expertization: 1997 BPA certificate



- 68 ☒ **Pristine Fresh and Clean Six Pence Laid Paper Cover to the United States 1851 (June 28)** A superb, very fresh cover to New York from the well-known Kennedy correspondence, bearing a choice 6p slate violet on laid paper with prominent laid lines, ample to large margins, rich colour and sharp impression, tied by concentric rings, couple file folds away from stamp, Montreal JU 28 1851 double arc dispatch, "CANADA" arc handstamp and PAID struck in red; no backstamp as customary for mail to the US. A beautiful single-franking cover mailed in the second month of usage, XF (Unitrade 2) **Est. 2,000.00+**

Provenance: The "Harbour" Collection of Canada's First Postage Stamps, Firby, May 1996; Lot 14



- 69 ☒ **Double Weight Letter Rate to the United States 1853 (April 21)** Cover from Montreal to New York, part of addressee excised, bearing a horizontal pair of 6p slate violet with just clear to large margins, stuck by concentric rings, left stamp further tied by PAID handstamp in red, Montreal double arc dispatch and border exchange arc "CANADA" handstamp in red; no backstamp as customary for mail to the US A scarce double weight 12 pence rate cover, Fine (Unitrade 2) **Est. 3,000.00+**

Provenance: Alfred Caspary, Sale 5 - British North America, H.R. Harmer, Inc., New York, October 1956; Lot 24

**THE SIX PENCE ON WOVE PAPER
A VERY PRESENTABLE PAIR
RARELY SEEN IN UNUSED CONDITION**



70 ★ 5, 1855 6p Slate Grey on Medium Wove Paper, Imperforate A rare unused pair in the distinctive shade on fresh wove paper, just into outer frameline to ample margins, hard to see internal cut on left stamp, small tear and surface scuff on right stamp. Despite the minor imperfections, a very presentable pair of Fine appearance. Very few Six pence unused multiples exist in any condition. (Unitrade cat. \$30,000) **Est. 7,500.00+**

Expertization: 2023 Greene Foundation certificate



- 71 ☒ **18-Pence Rate Franked with Six-Pence Prince Consort Stamps 1857** (August) Part cover displaying an impressive franking consisting of three single 6p greenish grey on medium wove paper, all with clear to noticeably large margins and superbly tied by four-ring '21' cancels, likely paying a six-fold (up to 3 ounces) domestic letter rate, clear Kingston AU 6 1857 double arc datestamp in red struck on backflap; backstamped John Seybold, a well known pioneer postal history collector, a visually striking Six pence Consort usage, F-VF (Unitrade 5b) **Est. 3,500.00+**

Expertization: 1992 BPA certificate

Provenance: John Seybold, J.C. Morgenthau & Co., March 1910; Lot 627 - described and identified as "6p purple black on thick hard paper".

Bertram Collection of Canada, Shanahan's Auctions, February 1959; Lot 301

BNA Sale, Robson Lowe Ltd., November 1963; Lot 801 - described as "part cover in peerless condition"



- 72 ☒ **Grand Trunk Railway Cover 1856** (June 10) Brown cover handstamped "By Grand Trunk Railway" in red with same ink Paid Drawer 14 owner's instructional marking informing the postal clerk to affix required postage and enter its value against the sender's account. Cover cleaned, bearing a 6p greenish grey on wove paper, in outer frameline to very large margins and tied by concentric rings, superb double ring Mon. & Isld. Pd. Grand Trk R. Way / No. 6 / C Down June 10 1856 RPO (Gray QC-166.06 RF "E") at left, mailed to Maine paying the current 6 pence letter rate to the US; no backstamp as customary for mail to the U.S. Fine and scarce Railway Post Office cover (Unitrade 5b) **Est. 1,000.00+**

Provenance: Graham Fairbanks, Sissons Sale 259, April 1967; Lot 234

The cover with oval "Young, Janes and Co. / Montreal" embossed on backflap; the original enclosure accompanies, a shipping receipt depicting a small train, detailing 20 barrels of flour at 60c each.

TEN CENTS PRINCE CONSORT

GOODALL DIE PROOFS
IN VERY ATTRACTIVE COLOURS

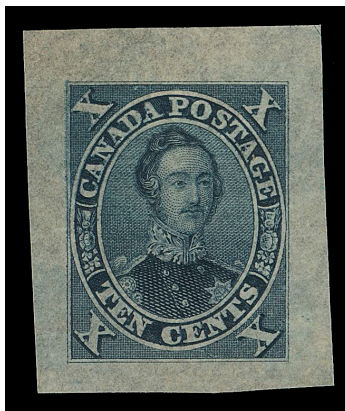


- 73 P 16TCiii, 1879 (circa.) 10c Prince Consort "Goodall" Die Proof, engraved, printed in brownish red on india paper 24 x 28mm; negligible mount mark, otherwise a superb and rarely seen coloured die proof, VF (Minuse & Pratt 16TC2g) **Est. 3,500.00+**

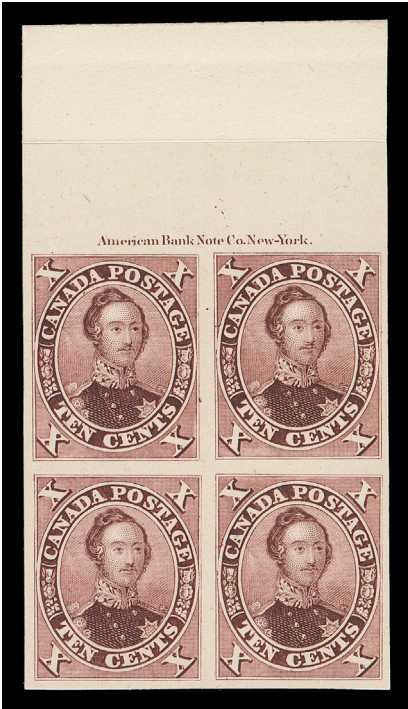
Provenance: Art Leggett Cents Issue Exhibit Collection (private sale)

The "Lindemann" Collection (private treaty, circa. 1997)

"Goodall" die proofs were printed in five colours - dark yellowish brown, brownish red (offered here), greenish blue, bluish green and greyish black. Slight shades are sometimes observed on other Decimal issues. Other colours and papers of the Ten cent come from the very rare Compound Die, together with the 12p Queen Victoria.



- 74 P 16TCiii, 1879 (circa.) 10c Prince Consort A fabulous "Goodall" Die Proof, engraved, printed in bluish black on greyish, very thin hard bond paper 24 x 29mm, in pristine condition and originating from the Compound Die. An exceptional coloured proof in all respects, XF (Minuse & Pratt 16TC1d) **Est. 3,500.00+**



- 75 **P** **17TCi + variety, 1864 10c Prince Consort** An attractive, choice plate proof block in brownish purple on card mounted india paper, showing full ABNC imprint at top (Positions 8-9 / 18-19) and showing the "C" Flaw on both proofs in right column, VF (Unitrade cat. as normal single proofs) **1,100.00+**

The "C" Flaw variety is found on stamps from the last two columns of the sheet with ABNC imprint, appearing on Printing Orders starting around November 1864.



76



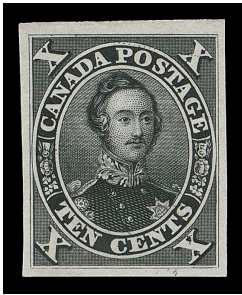
77

- 76 **P** **17TCi + varieties, 1864 10c Prince Consort** Trial colour plate proof pair in brownish purple on india, shows the **Major Re-entry** (Position 29) on left proof along with the "C" Flaw variety on both; natural inclusion at left, VF (Unitrade cat. as normal single proofs) **550.00+**

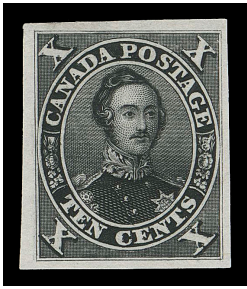
Provenance: The "Lindemann" Collection (private treaty, circa. 1997)

- 77 **P** **17TC, 10c Prince Consort** Trial colour plate proof pair printed in lilac on india paper, lovely colour, VF **500.00**

A VERY SCARCE QUARTET OF TRIAL COLOUR PLATE PROOFS
EACH WITH A DOCUMENTED PLATE VARIETY



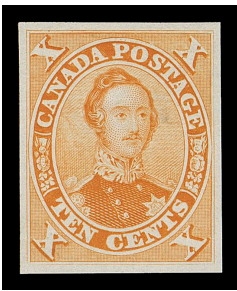
78



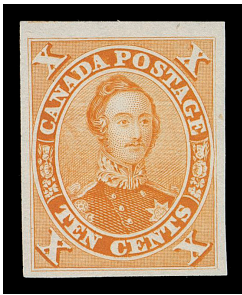
79

- 78 P 16TC + variety, 1859 10c Prince Consort Trial colour plate proof in black on india paper, clearly displaying the constant "String of Pearls" (Position 3) plate variety. Superb dark rich colour, a very elusive combination of the variety and a sought after colour, VF **Est. 500.00+**
- Provenance: The "Lindemann" Collection (private treaty, circa. 1997)

- 79 P 16TC + variety, 1859 10c Prince Consort Superb trial colour plate proof in black on india paper, showing the constant Major Re-entry (Position 29) with traits and doubling that are rather subtle on the issued stamp but not so on this proof. A great example of this elusive plate variety, very scarce and XF **Est. 500.00+**
- Provenance: The "Lindemann" Collection (private treaty, circa. 1997)



80



81

- 80 P 16TCii + variety, 1864 10c Prince Consort Trial colour plate proof in orange yellow on india, shows the constant "String of Pearls" (Position 3) plate variety; negligible india thin hardly discernible, a rare example of this variety in a desirable colour, VF **Est. 500.00+**
- Provenance: The "Lindemann" Collection (private treaty, circa. 1997)
- 81 P 16TCii + variety, 1864 10c Prince Consort Trial colour plate proof in orange yellow on india, showing Major Re-entry (Position 51) with faint marks in "N CEN" of "TEN CENTS", doubling line below shading of the lower right "X"; minute natural paper inclusion, VF **Est. 500.00+**
- Provenance: The Lindemann Collection (private treaty, circa 1997)



**AN IMPRESSIVE PLATE IMPRINT MULTIPLE
VERY FEW SURVIVE LARGER THAN A BLOCK OF FOUR**



- 82 ★ 17, 17iv, 1866 10c Dull Reddish Purple, Perf 12** An unused block of six (2x3) showing ABNC imprint captured in margin at top; minor flaws include pinholes, a diagonal crease on lower pair and slight soiling, still a very rare plate imprint multiple of Fine appearance. **Est. 5,000.00+**

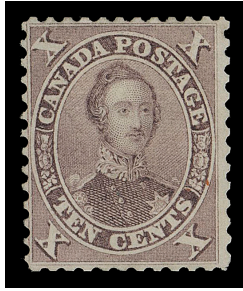
The "String of Pearls" (Position 3, top right) plate variety is subtle and hard to see on this bright shade. Shows supporting constant positional dot in frame above upper left "X" and shows ABNC imprint running across margin at top.

Provenance: Fred Jarrett Canada 1859-1864, Sissons Sale 169, December 1959; Lot 287

Stanley Cohen, Cavendish Auctions, October 1986; Lot 81

The "Carrington" Collection of Canada 1851-1864, Matthew Bennett Auctions, June 2002; Lot 3354

Other comparable unused multiples larger than a block of four, are a mint horizontal strip of five and a plate imprint block of eight. Remarkably enough, both multiples were part of the Brigham collection and were sold in Part I and Part II respectively.



- 83 ★ 17aiv, 1863-1864 10c Violet Brown, Perf 12x11¼ A scarce unused single showing the "String of Pearls" plate variety (Position 3), recut perfs at foot, Fine appearing and rare. **2,200.00**



- 84 ★ 17, 1865-1868 10c Red Lilac, Perf 12 A lovely, bright fresh unused single, well centered for the issue, VF **2,000.00**

Provenance: The "Lindemann" Collection (private treaty, circa. 1997)



- 85 ★ 17 variety, 1867 10c Light Brown Purple (PO 26), Perf 12 Nicely centered unused example showing the "Close Shave" variety - an unprinted area on the Prince's chin, along with four characteristic guide dots, the two main dots being above "O" of "POSTAGE" and other located at top of "N" in "TEN", bright shade on fresh paper. A very scarce unused example of this elusive variety, VF (Unitrade cat. as normal stamp) **2,000.00+**

Provenance: The "Lindemann" Collection (private treaty, circa. 1997)



**AN EXTREMELY RARE COVER
DISPLAYING THE DOUBLE EPAULETTE VARIETY
ON TEN CENT FIRST PRINTING**

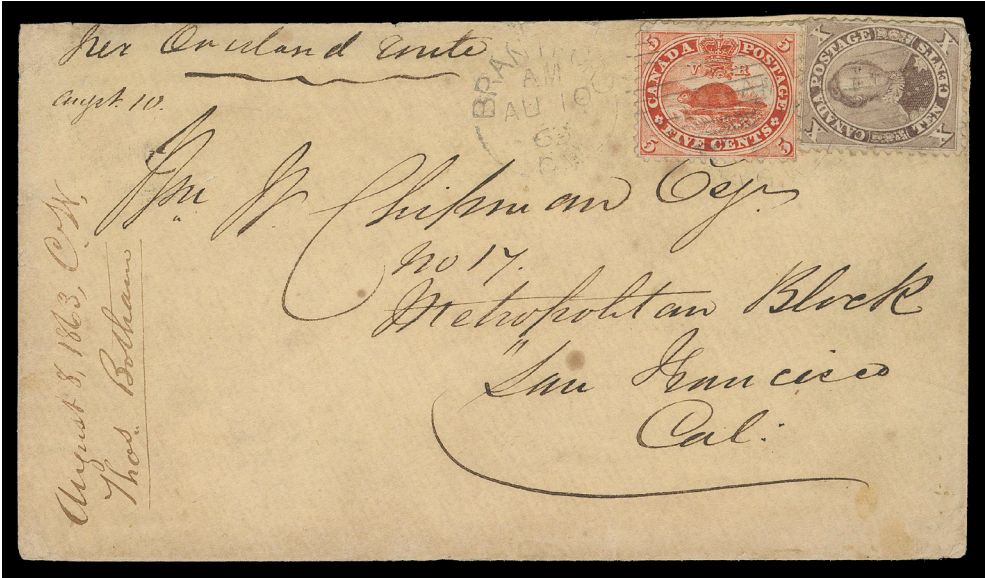


- 86 ☒ 1859 (August 3) Blue folded entire lettersheet from Kingston to New York, bearing the unmistakable 10c black brown, perf 11 $\frac{3}{4}$ (Printing Order 1A), a fine centered example with rich colour showing the **"Double Epauvette"** variety (Position 61), one short perf at left otherwise in flawless condition, tied by light four-ring numeral cancel (should be '18') with clear Kingston AU 3 1859 double arc dispatch struck at left; vertical fold well away from stamp. Pays the 10 cent letter rate; no backstamp as customary for mail to the US. We would not be surprised if this is the only known usage of a 10c black brown with Double Epauvette variety on cover, F-VF (Unitrade 16iv) **Est. 5,000.00+**

Provenance: Arthur Groten, Maresch Sale 133, September 1981; Lot 282

Henry Lubke Jr. Third Portion, Maresch Sale 272, December 1992; Lot 510

VERY SCARCE 15-CENT LETTER RATE
OVERLAND TO CALIFORNIA



- 87 ☒ 1863 (August 10) Yellow cover endorsed "Per Overland Route" from Brantford, C.W. to San Francisco, California, franked with single 5c vermilion and 10c dull red brown, perf 12x11¾, tied by Brantford duplex, trivial perf flaws due to placement near edge of envelope, missing backflap and slight ageing. A very scarce 15 cent rate to California in effect between July 1, 1859 and June 30, 1864, Fine (Unitrade 15, 17b) Est. 2,000.00+

Provenance: Charles deVolpi, Sissons Sale 239, October 1965; Lot 92

Charles Firby Gold Medal Collection, Canada Pence & Cents covers, Harmers of New York, October 4, 1982; Lot 82

Warren Wilkinson, H.R. Harmer, Inc., New York, December 1997; Lot 648


Literature: Illustrated in Arfken & Leggett "Canada's Decimal Era" on page 103 (Figure 3). Also reported on Census Table 2. 15¢ Rate Canadian Decimal Covers to the U.S. Coast as Cover Number 11.

Cover No. 22 on Table 1. 15 cents cover to California in article titled: "A census of covers to California for the Decimal period" by Luc Frève, published by Pence - Cents Era Study Group newsletter, Volume X, No. 4, November 2021, pages 4-10.



A FABULOUS FRANKING FOR REGISTERED DOUBLE WEIGHT LETTER RATE TO THE UNITED STATES



- 88  1867 (January 5) Great Western Railway of Canada envelope sent registered from Hamilton to Memphis, Tennessee, displaying an outstanding franking with two 10c claret (PO 23), perf 12, left example showing portion of ABNC imprint and faint “String of Pearls” plate variety (Position 3) and five examples of the 1c rose, perf 12, three of which are overlapped, tied by Hamilton JA 5 double arc dispatch in black at top left and by Hamilton JA 5 67 split ring datestamps in blue, additional strike below with same-ink straightline REGISTERED, border exchange two-line PAID / CANADA 10 CENTS with “10” digit modified as “20” in manuscript, plus “5 / 25” below, light Windsor JA 7 transit backstamp; envelope with tears, one of which shows on the front near right 10c, couple stamps with minor perf flaws. An impressive double registered weight letter to the United States – A UNIQUE FRANKING to the US according to the Firby census, F-VF (Unitrade 14, 17, 17iv) **Est. 3,000.00+**

Census: This is cover No. 5 listed in Arfken & Leggett “Canada’s Decimal Era 1859-1868” handbook on Table 1: Covers to the U.S. – double rate, registered; on page 97. **This being the only one franked with 10c (2) and 1c (5).**



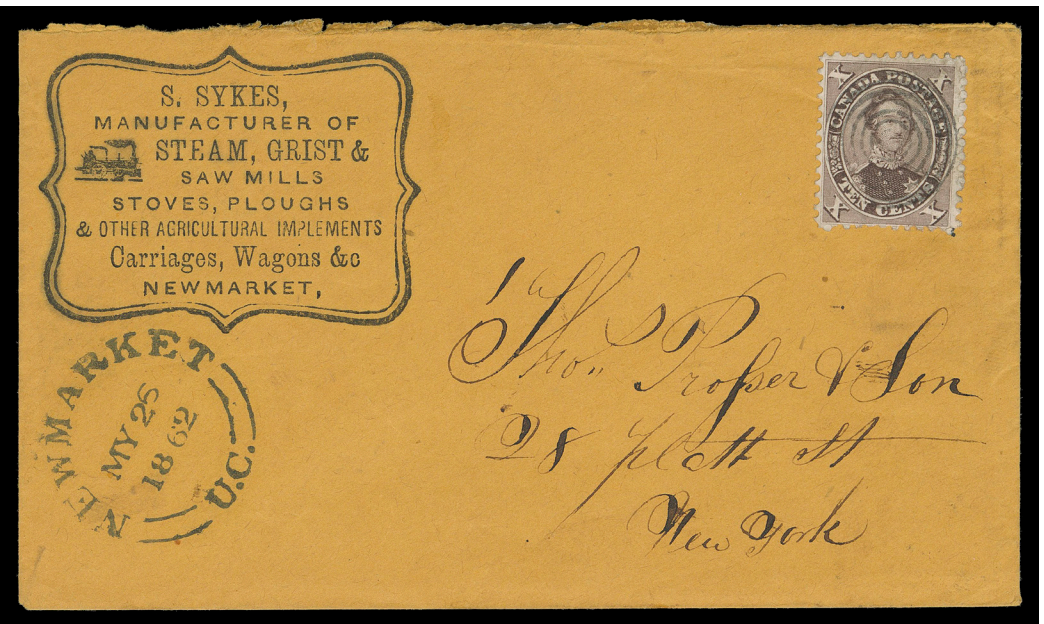
- 89 ☒ **Grand Trunk Railway Cover 1867** (December 4) Grand Trunk Railway imprinted white envelope, slightly reduced at right, franked with 10c brown purple, perf 12 tied by Montreal duplex, addressed to Island Pond, Vermont – which acted as a Canada – U.S. mail exchange point and a railway post office hand-over point for the mail, appealing, F-VF (Unitrade 17) **Est. 350.00+**



- 90 ☒ **Unusual 12-Cent Allan Line Franked Cover to the United Kingdom 1868** (January 8) Cover bearing an alternative franking to make up the 12½ cent rate via Allan Line to the United Kingdom, with a 10c brown purple and two 1c rose, stamps with small flaws, neatly tied by concentric rings to faulty cover with ageing, light Morpeth double arc dispatch datestamp; perhaps the needed ½ cent was paid in cash. On reverse Montreal JA 10 transit and neat Launceston JA 25 68 CDS on arrival. Despite the imperfections, a very scarce cover with great character and Fine appearance; unlisted in the Arfken & Leggett handbook which tabulates Firby's census, a mere five covers show any 12 cent franking (only one shows a similar franking; dated April 4, 1866 to Scotland). (Unitrade 14, 17) **Est. 500.00+**



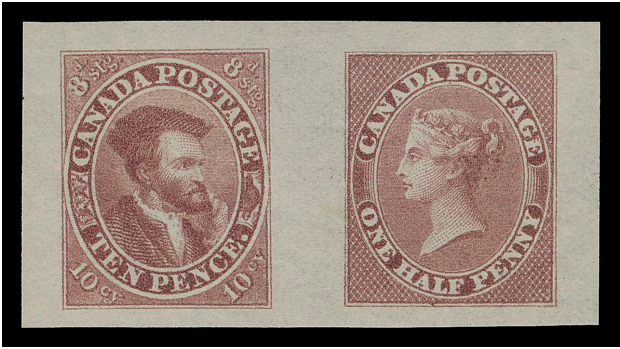
- 91 ☒ **Cameo Illustrated Advertising Cover to the United States 1861** (September 30) Engine Boilers, James Currie, Boiler & Blacksmith, Toronto, dark blue cameo embossed advert on manila envelope, franked with a well centered 10c brownish sepia (PO 6A) perf 11¾, cancelled by diamond grid cancel, Toronto split ring dispatch at foot, addressed to New York; some paper adhered on backflap, no backstamp as customary for mail to the US, VF (Unitrade 17b early printing) **Est. 500.00+**



- 92 ☒ **Steam Engine Illustrated Advertising Cover 1862** (May 26) S. Sykes, Manufacturer of Steam, Grist & Saw Mills... Carriages, Wagons & c. Newmarket "Steam Engine" illustrated advertising on bright orange envelope, bearing a 10c sepia (PO 7C), perf 11¾ with superb colour and bold impression, cancelled by socked-on-nose concentric rings, superb Newmarket double arc dispatch at left, pays the 10 cent letter rate to New York; some paper adherence on backflap. A lovely and visually striking cover, VF (Unitrade 17b) **Est. 500.00+**

HALF PENNY QUEEN VICTORIA

AN OUTSTANDING SE-TENANT PROOF PAIR
LITHOGRAPHED AND IN PRISTINE CONDITION



- 93 P 7P & 8P, 1868 (circa.) 10p Jacques Cartier & ½p Queen Victoria A phenomenal American Bank Note Company se-tenant pair of **lithographed** proofs originating from the trade sample sheet. Printed in a fabulous dark garnet red colour on horizontal mesh wove paper (0.003” thick). Exceptionally fresh and of wonderful eye-appeal; outstanding in all respects, XF (Minuse & Pratt P8-C) **15,000.00+**
- Provenance: The “Lindemann” Collection – Canada Pence & Cents Issues (private treaty circa. 1997)



HALF PENNY QUEEN VICTORIA TRADE SAMPLE PROOFS



THE MOST COMPREHENSIVE ASSEMBLY
EVER OFFERED AT AUCTION





IN A KALEIDOSCOPIC ARRAY OF COLOURS



-X94-

**A SPECTACULAR LOT OF DIFFERENT
SHADE, COLOUR & PAPER COMBINATION**



94 P 8, 1868 (circa.) ½p Queen Victoria American Bank Note Company Trade Sample Proofs - an incredible assembly of sixty-one different colours ranging from bright yellow to dark rose, all engraved and printed on several different paper types; more than two-thirds are sound, others with the usual thin (some very minor). Collected in similar fashion to the lot sold in Part II (Lot 124, sold for \$52,500 hammer against an estimate of \$25,000) which consisted of 49 proofs of the Ten pence Cartier. This lot was also formed over many years on a one-by-one basis, displaying a remarkably high percentage of existing shade and paper combinations. A wonderful lot and one of the highlights of the collection of the Half penny Queen Victoria, VF *Also Illustrated on Pages 70-72* **Est. 35,000.00+**

Many emanate from famous collections of the past, such as the Nickle and "Lindemann" (Ian Bett) collections.



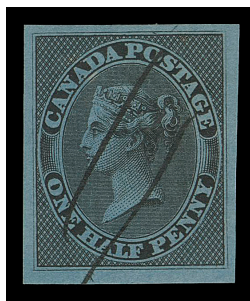
AMERICAN BANK NOTE TRADE SAMPLE PROOFS



- 95 P 8, 1868 (circa.) ½p Queen Victoria American Bank Note Company trade sample proof, engraved, printed in rose brown on wove paper, gummed by ABNC. A very attractive and most striking coloured proof, VF OG **Est. 750.00+**



- 96 P 8, 1868 (circa.) ½p Queen Victoria American Bank Note Company trade sample proof, engraved, printed in black on thick yellowish **Vertical Laid Paper**, gummed by ABNC. A remarkable coloured proof, VF OG **Est. 750.00+**



- 97 P 8, 1868 (circa.) ½p Queen Victoria American Bank Note trade sample proof, engraved, printed in black on thick blue **Vertical Laid Paper**, pen lined and gummed by ABNC, rare, VF OG **Est. 750.00+**

Provenance: Henry Gates (Part 1), Maresch Sale 124, March 1981; Lot 383

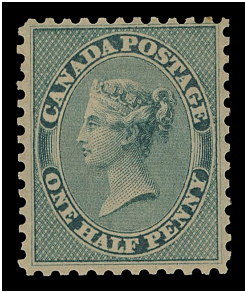
The "Lindemann" Collection (private treaty, circa. 1997)



- 98 P 8, 1868 (circa.) ½p Queen Victoria American Bank Note Company trade sample proof, engraved, printed in bright yellowish green on white wove paper, perforated and gummed (lower half remains) by ABNC, VF OG **Est. 1,000.00+**

Provenance: Henry Gates (Part 1), Maresch Sale 124, March 1981; Lot 380

Maresch Private Treaty (Second Catalogue, 1982), Item 103



- 99 P 8, 1868 (circa.) ½p Queen Victoria American Bank Note Company trade sample proof, engraved, printed in deep green on yellowish wove paper, perforated and gummed by ABNC; small paper adherences on back, VF part OG; a visually striking coloured proof. **Est. 1,000.00+**



HALF PENNY PLATE PROOF BLOCK
DEEP SHADE CLEARLY DISPLAYS FIVE PLATE VARIETIES



100 P 8TC + varieties, ½p Deep Rose An attractive plate proof block of 25 on india paper, in a deeper shade than the issued stamp, Positions 68-72 / 116-120 in the plate of 120-subjects, showing five different Major Re-entries at Positions 70, 72, 84, 96, 120, the last four shown in the last column, VF (Unitrade cat. \$7,500 as normal proofs) Est. 2,500.00+



details of Major Re-entry Pos. 120 – the best known half penny variety

HALF PENNY SPECIMEN PLATE PROOF POSITIONAL BLOCK
WITH THREE MAJOR RE-ENTRIES



- 101 P 8Pi + varieties, ½p Queen Victoria A remarkable corner margin plate proof block of sixteen, printed in rose, issued colour, on india paper with vertical SPECIMEN overprint in green, Positions 81-84 / 117-120 from the plate of 120-subjects, displaying two complete Rawdon, Wright, Hatch & Edson, New York plate imprints, shows **Major Re-entries** at Positions 84, 96 and 120, VF (Unitrade cat. \$4,800 as normal proofs) **Est. 2,000.00+**

Provenance: The "Lindemann" Collection (private treaty, circa. 1997)



**SPECIMEN PLATE PROOF PAIRS
WITH DIFFERENT PLATE VARIETIES**



- 102 P 8Pi + variety, ½p Queen Victoria** Plate proof pair in rose, colour of issue, on india paper with vertical SPECIMEN overprint in green, right stamp with **Major Re-entry** (Position 22 from the plate of 120-subjects) with strong doubling in "NADA POST" of "CANADA POSTAGE" and oval and bottom frameline, fresh and appealing, VF **600.00+**



- 103 P 8TCii + varieties, ½p Queen Victoria** Trial colour plate proof pair in black on india paper with vertical SPECIMEN overprint in carmine, tiny scissor cut at foot between proofs; left proof shows the **"Crown" plate flaw** (major plate scratch, Position 71) and right proof with the **Major Re-entry** (Position 72) from the plate of 120 subjects, latter shows doubling on nearly all lettering, frameline at top and lower left corner. A very appealing pair displaying prominent plate varieties, VF **600.00+**

AN ELUSIVE MINT MULTIPLE
FROM THE FAMOUS “PACK” COLLECTION



- 104 ★ **8, 1857 ½p Rose on Medium Wove Paper, Imperforate** Mint block of six, Positions 86-88 / 98-100 from the plate of 120-subjects, folded vertically and horizontally mostly between stamps and other minor imperfections; nevertheless a rare mint multiple, F-VF appearance with large part original gum. **Est. 4,000.00+**

Short transfer varieties can be seen on Positions 88 and 98, both visible at the bottom of the design.

Provenance: Charles Lathrop Pack, Part II, Harmer, Rooke & Co., April 1945; Lot 125

The "Lindemann" Collection (private treaty, circa. 1997)



Lot 105 (300% actual size)

**A CHOICE, LARGE MARGINED MINT EXAMPLE
OF THE SOUGHT-AFTER MAJOR RE-ENTRY
FROM THE FAMOUS "LICHTENSTEIN" COLLECTION**



- 105 ★ 8ii, 1857 ½p Rose on Medium Wove Paper, Imperforate** An unusually choice mint example of this rarity, displaying **the Major Re-entry from Position 120**, with prominent doubling especially in HALF and framelines, **characteristic diagonal line at top left**, large margins all around, bright fresh colour and large part original gum. A highly desirable mint example of this very elusive and significant plate variety, no doubt among the finest of the very few that exist in mint condition, VF+ OG **8,000.00+**

Expertization: 1980 Greene Foundation certificate

Provenance: Alfred Lichtenstein, H.R. Harmer Inc., April 1956; Lot 841

The "Lindemann" Collection (private treaty, circa. 1997)



- 106 ★ 8, 1857 ½p Rose on Medium Wove Paper, Imperforate** A superb unused single on wove paper with distinctive horizontal mesh, surrounded by unusually large margins, brilliant colour on fresh paper. A lovely GEM quality example, XF **1,400.00+**

Expertization: 2023 Greene Foundation certificate

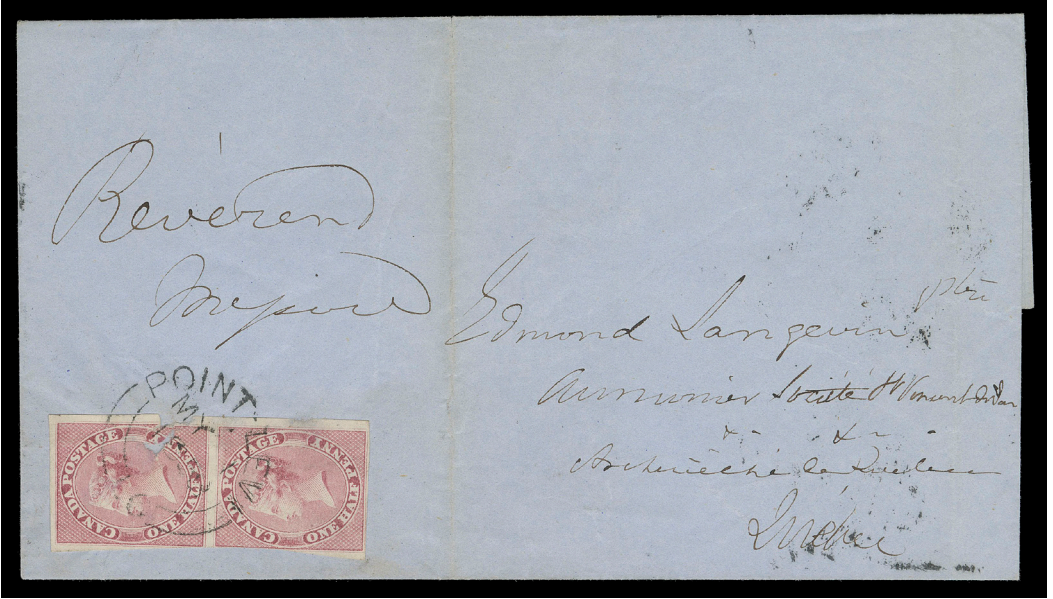
Provenance: Daniel Cantor "Mint Canada", Ian Kimmerly Auctions Sale 8, November 1990; Lot 17

The "Lindemann" Collection (private treaty, circa. 1997)

Originally in the "Lindemann" collection and also offered at the Daniel Cantor 1990 sale as soft horizontally ribbed paper.



**ONE PENNY FERRIAGE – ADJACENT TOWN POST OFFICE LETTER RATE
ONE OF ONLY FIVE RECORDED BEARING THIS FRANKING**



- 107 ☒ 1858 (May 1) Blue folded cover from Point Lévi, L.C. to Québec franked with a vertical imperforate pair of half penny rose on medium wove paper, top stamp faulty before being affixed, ideally tied by clear Point-Levi double arc dispatch, superbly struck on back with same-day Quebec receiver. Pays the very rare adjacent post office rate commonly known as "ferriage across the St. Lawrence River" one-penny rate - one of only a mere five such franked covers have been reported; a great cover for a serious postal history collection, Fine (Unitrade 8) **Est. 2,500.00+**

Provenance: The "Loch" Collection - Canadian Pence Issue, Firby Auctions, April 1999; Lot 164

Literature: Illustrated and discussed in article "The Quebec - Point Levi 1d / 2¢ cover" by George Arfken & Charles Firby, BNA Topics, Whole 514, Vol. 65, No. 1, January - March 2008, pages 20-24 (Figure 3).

Census: This is Cover No. 3 listed in Table 22 "Adjacent Post Office Rate Pence Covers" in Arfken, Leggett, Firby & Steinhart "Canada's Pence Era The Pence Stamps and the Canadian Mail 1851-1859" handbook on pages 116-119.

Canada Pence Issue 1851-1859 Cover Census, compiled by Wayne Smith; five covers bearing two imperforate Half penny stamps for the One Penny rate have been recorded; one other cover exists paying this rate, franked with a pair of perforated Half penny.

ONE CENT QUEEN VICTORIA**A BEAUTIFUL AND STRIKING GOODALL DIE PROOF**

- 108 P 14, 1879 (circa.) 1c Queen Victoria** A superb "Goodall" Die Proof, engraved, printed in bluish green 24 x 30mm on card 32 x 37mm, crossed guidelines surrounding design, exceptionally fresh and choice, rarely seen and XF (Minuse & Pratt 14TC2g) **Est. 7,500.00+**

Provenance: The "Lindemann" Collection (private treaty, circa. 1997)



- 109 P 14, 1879 (circa.) 1c Queen Victoria "Goodall" Die Proof, engraved, printed in brownish red 26 x 30 die sunk on card 29 x 34mm, showing crossed guidelines surrounding design; natural paper fibre inclusion at top right not readily discernible, a remarkable coloured proof, rare, VF (Minuse & Pratt 14TC2g) **Est. 5,000.00+**

Provenance: BNA Proofs & Essays, Robson Lowe Ltd., June 1963; Lot 62

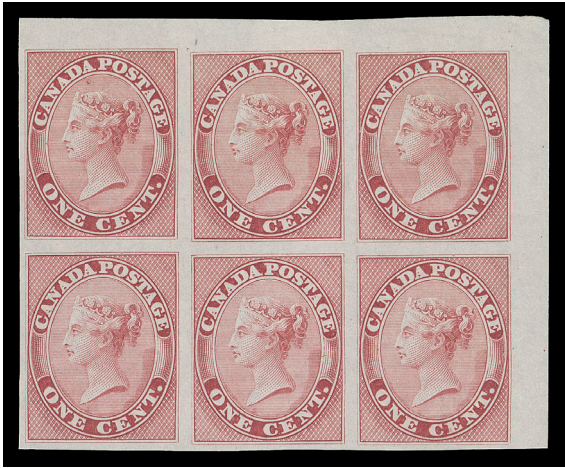
The "Lindemann" Collection (private treaty, circa. 1997)

Literature: Illustrated in Robson Lowe "The Encyclopedia of British Empire Postage Stamps, Vol. V – British North America" on page 177



- 110 P 14, 1879 (circa.) 1c Queen Victoria "Goodall" Die Proof, engraved, printed in dark yellowish brown on india paper 24 x 29mm die sunk on card measuring 32 x 37mm, trace of foxing at right, characteristic crossed guidelines surrounding design, rare and appealing, VF (Minuse & Pratt 14TC2g) **Est. 5,000.00+**

Provenance: The "Lindemann" Collection (private treaty, circa. 1997)



- 111 P 14TC, 1c Queen Victoria Trial colour corner margin plate proof block of six printed in pale rose, near issued colour, on india paper, choice, VF 1,500.00

Interestingly, this block lacks the ABNC imprint above Positions 8 & 9, indicating that it originated from a plate printed prior to October 1864. Imprints were added starting with the printing order of November 1864.



- 112 P 14Pii, 1c Deep Rose Plate proof pair on india paper with the elusive diagonal SPECIMEN overprint in black, VF 1,000.00

Right proof shows a prominent Short Entry variety at top.

Provenance: Gerald Wellburn, Robson Lowe, Toronto, November 1983; Lot 25

The "Lindemann" Collection (private treaty, circa. 1997)



- 113 P 14TCi, 1c Queen Victoria Trial colour plate proof pair in black on india paper, deep rich colour and sharp impression, not often seen in a pair, VF 800.00



Lot 114 (200% actual size)

**A SUPERB IMPERFORATE BLOCK ON WOVE PAPER
VERY RARELY SEEN AND ONE OF THE SOLE SURVIVING BLOCKS**



- 114 ★ 14a, 1868 1c Rose on Medium Wove Paper** An exceptional imperforate block in the distinctive shade of the issued stamp, surrounded by large margins, ungummed. One of (if not) the finest existing blocks extant, XF **18,000.00+**

Expertization: 1988 Greene Foundation certificate

Provenance: Fred Jarrett Canada 1859-1864, Sissons Sale 169, December 1959; Lot 16

Brigham's exhibit page describes this as "only recorded block". In addition to the one offered here, we were only able to find two others: 1) block with very close margin at left in General Robert Gill, October 1965; Lot 67, E. Carey Fox (Second Portion), October 1968; Lot 84; and 2) block with sheet margin at top, large scissor cut just clear of top frameline in Dale-Lichtenstein Sale 2 - BNA Part One, Lot 318. We are not certain if these two blocks remain intact.



**THE ELUSIVE THICK PAPER
A SELECTED UNUSED BLOCK**



- 115 ★ **14b, ii, 1859-1862 1c Rose on Thick Wove Paper, Perf 11¼** An unusually well centered unused block with bright colour on fresh paper (0.004" thick), couple minute ink specks on lower right stamp and a few split perfs, a very scarce, well centered multiple of **the elusive thick paper**, VF **6,000.00**

Provenance: Gerald Wellburn, Robson Lowe, Toronto, November 1983; Lot 34

Sam Nickle, Christie's Robson Lowe, New York, March 1993; Lot 229

A BEAUTIFUL MINT BLOCK
WITH SUPERIOR CENTERING



- 116 ★ 14, 1865-1868 1c Rose, Perf 12 A superior mint block of four, very well centered for the issue, lovely fresh colour and full original gum, trace of gum adhesion on lower left stamp; a beautiful and seldom seen mint block, VF OG

10,000.00



A CHALLENGING, UNUSUALLY CHOICE
MINT EXAMPLE ON THICK PAPER



- 117 ★ **14bii, 1859-1862 1c Rose on Thick Wove Paper, Perf 11¼** An attractive, well centered mint single of this scarce stamp, printed on distinctively thick paper, rich colour and large part original gum; a difficult stamp to find, VF OG **3,750.00**

Expertization: 1986 Greene Foundation certificate, identified as old CS number 12b ("Scott No. 14 variety on very thick paper, mint OG...")

Provenance: Julian C. Smith, Maresch Sale 191, October 1986; Lot 25

The "Lindemann" Collection (private treaty, circa. 1997)



- 118 ★ **14b, 1859-1862 1c Deep Rose, Perf 11¼** A very well centered unused example with noticeably large margins, rich colour on bright fresh paper, an attractive stamp, VF **900.00**

**SUPERB FOUR-RING CANCELLED
SOLDIER'S LETTER RATE TO IRELAND**



- 119 ☒ 1862 (October 3) Military Concessionary rate from the well-known Chambers correspondence "From 2nd Class Army Schoolmaster J. Chambers Sec. Fus. Guards" countersigned by Commander Officer and addressed to Bray, Ireland, light overall ageing, diagonal cover crease clear of franking and light edge wrinkling just touches upper right corner of the nicely centered horizontal pair of 1c deep rose, perf 11¼, tied by bold, centrally struck four-ring '21' cancellation, Montreal split ring dispatch at left, Bray OC 15 62 CDS postmark; pays the 2 cent Soldier's Concessionary letter rate to the UK, Fine (Unitrade 14b) **Est. 1,500.00+**



AN EXTREMELY RARE DECIMAL COVER TO BELGIUM



- 120 ☒ 1864 (June 28) Envelope from Sault Au-Récollet to Namêche, Belgium, bearing an unusual franking of a 10c brown and nine 1c rose, perf 12x11¾, nearly all affected from overlapping envelope; subsequently refolded to show the complete franking. Tied by light concentric rings cancels, stamp at left further tied by light split ring dispatch, circular "PD" instructional marking in red, blurry Montreal JU 28 transit and two different Belgian backstamps JUIL 15 and JUIL 16. Pays a remarkable 19 cent rate via Canadian Packet to Belgium. Despite the flaws an extraordinary franking of the utmost rarity, Fine appearing and extremely rare. (Unitrade 14viii, 17b) **Est. 3,000.00+**

Provenance: Bill Lea Exhibit Collection of Canada Pence & Cents Postal History (private sale)

Art Leggett Cents Issue Exhibit Collection (private sale)

The "Lindemann" Collection (private treaty, circa. 1997)

Census: Firby records only two covers to Belgium, this being a UNIQUE franking.



- 121 ☒ **Photographer's Business Advertising Printed Matter Wrapper** Undated (circa. early 1860s) Photographer W. Notman "Cartes de Visite", Montreal pre-printed card stock advertising wrapper addressed to Quebec, unsealed at sides (originally containing photographs), bearing a nicely centered horizontal pair of 1c deep rose, perf 11¼, small fault at top right, cancelled by mute grids, paying double weight (up to 2 ounces) non-letter unsealed domestic printed matter rate, VF and very attractive. (Unitrade 14b) **Est. 1,000.00+**

Provenance: Charles deVolpi, Sissons Sale 247, April 1966; Lot 47

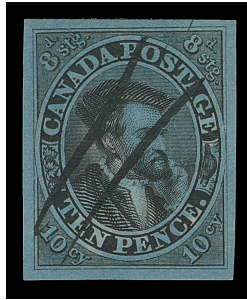
Unknown provenance, Maresch Sale 94, November 1977; Lot 141



- 122 ☒ **Superb Registered Advertising Cover** 1864 (June 14) Agricultural Mutual Assurance Association of Canada yellow envelope mailed registered from London, C.W. to Simcoe, franked with 5c vermillion and well centered pair of 1c rose, perf 12x11¼, brilliant fresh colours, cover with inconsequential nick at lower right; redirected to Birr with five different transit and arrival markings on back along with straightline REGISTERED handstamp; pays 5 cent letter rate with 2 cent registration fee. An impressive and visually striking cover in choice condition, VF (Unitrade 14viii, 15) **Est. 750.00+**



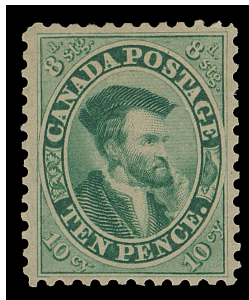
TEN PENCE JACQUES CARTIER



- 123 P 7, 1868 (circa.) 10p Jacques Cartier** American Bank Note Company trade sample proof, engraved, printed in black on thick blue vertically Laid Paper, pen lines and gum applied by ABNC, rare and visually striking, VF OG **Est. 750.00+**

Provenance: Henry Gates (Part 1), Maresch Sale 124, March 1981; Lot 343

The "Lindemann" Collection (private treaty, circa. 1997)



- 124 P 7, 1868 (circa.) 10p Jacques Cartier** American Bank Note Company trade sample proof, engraved, printed in dull blue green on yellowish wove paper with vertical mesh, perforated and gummed by ABNC; a lovely and rare proof, VF OG **Est. 1,000.00+**

Provenance: The "Lindemann" Collection (private treaty, circa. 1997)

**SPECIMEN OVERPRINTED PROOF BLOCK OF THIRTY
LESS THAN NINETY SUCH PROOFS WERE SOLD
AT THE 1990 ABNC ARCHIVES SALE**



- 125 P 7Pi + variety, 10p Blue** An impressive corner margin plate proof block of 30, Positions 61-66 / 109-114 from the plate of 120 subjects, printed in the issued colour on india paper with vertical **SPECIMEN** overprint in carmine; tiny pinholes in lower corners resulting from twice positioning the specimen setting of 60 overprints; shows the **Strong Re-entry** at Position 90, VF (Unitrade cat. \$9,000 as normal single proofs) **Est. 3,000.00+**

Provenance: Dale-Lichtenstein, Sale 7 - British North America Part Three, H.R. Harmer, Inc., January 1970; Lot 871

**A VERY RARE AND APPEALING DOUBLE CUNARD LINE
LETTER RATE TO ENGLAND**



- 129 ☒ 1859 (June 19) An impressive, clean folded cover endorsed "Cunard Steamer" and mailed from Quebec to London, England, franked with two single imperforate 10p blue on thicker white wove paper with clear to mostly large margins, tied by light 4-ring '37' cancels, neat Quebec double arc dispatch at left and superb London JY 4 Paid CDS with similar receiver CDS in red on back. A beautiful and very rare double Cunard Line rate cover; the Wayne Smith Pence Issue 1851-1859 Cover Census (as of January 2022) lists only eight 20 pence frankings to England; this cover with excellent pedigree is surely among the finest and most attractive, VF (Unitrade 7a + variety) **Est. 7,500.00+**

Left stamp shows a **Strong Re-entry** plate variety from Position 16.

Provenance: J.N. Sissons, Private Treaty Sale 1962, Item 3075

Charles deVolpi, Sissons Sale 239, October 1965; Lot 203

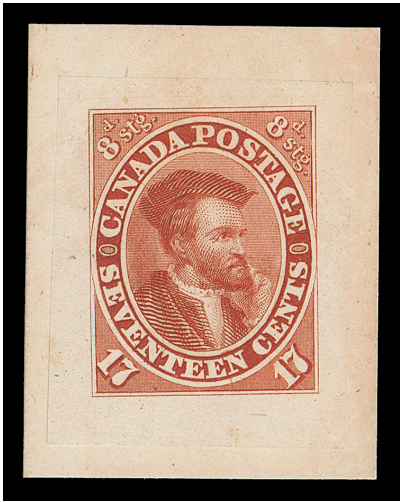
John Foxbridge (du Pont) Collection, private treaty 1988

See Lot 14 for double Allan Line – Canadian Packet letter rate from the same correspondence.



SEVENTEEN CENTS JACQUES CARTIER

GOODALL DIE PROOF OF THE CARTIER STAMP
ARBUABLY THE TOUGHEST DENOMINATION
OF ALL CANADA’S DECIMAL SERIES TO FIND



130 P 19, 1879 (circa.) 17c Jacques Cartier "Goodall" Die Proof, engraved, printed in brownish red on india paper 23 x 29mm die sunk on card 28 x 38mm, in choice condition. A most attractive and rarely seen coloured die proof of the Seventeen cent, VF (Minuse & Pratt 19TC2g) Est. 7,500.00+

Provenance: The "Lindemann" Collection (private treaty, circa. 1997)

AN IDEAL POSITIONAL BLOCK
SHOWING THE POSITION 100 MAJOR RE-ENTRY



- 131 P 19TC + variety, 1867 17c Jacques Cartier A choice, fresh trial colour corner margin plate proof block of nine (Positions 78-80 / 98-100) in the distinctive pale blue shade on card mounted india paper, showing the **Major Re-entry** (Position 100) plate variety with characteristic doubling of left vertical frameline, in oval next to "AGE" and "ENTS" of "POSTAGE" and "CENTS" respectively, etc. A desirable block showing the major plate variety, VF (Unitrade cat. as normal proofs) **2,700.00+**

Provenance: The "Lindemann" Collection (private treaty, circa. 1997)

Another known Re-entry can be seen at Position 80 (upper right proof).



detail



- 132 P 19P shade, 17c Jacques Cartier Plate proof block in a lovely indigo colour on india paper; a noticeably darker shade than we normally encounter. Choice and very attractive, VF **1,400.00+**



- 133 P 19Pii + variety, 17c Blue Plate proof pair from lower right margin in issued colour on india paper with diagonal SPECIMEN overprint in carmine, right proof shows the **Major Re-entry** (Position 100) with noticeable doubling of left frameline, in oval next to "AGE" and "ENTS" of "POSTAGE" and "CENTS" respectively; india thinning from previous mounting, VF appearance; a rare combination of the diagonal specimen and the well-documented plate variety. (Unitrade cat. \$1,300 as normal proofs) **Est. 750.00+**



- 134 P 19TCii, 1864 17c Jacques Cartier Trial colour plate proof block in orange yellow on india, sheet margin at top, ample to large margins on other sides. A lovely block, VF **2,000.00**

A UNIQUE IMPERFORATE BLOCK ON WOVE PAPER
DISPLAYING A KNOWN PLATE VARIETY



- 135 ★ **19b + variety, 1867 17c Blue** A very scarce mint imperforate block of four, close to ample margins, horizontal fold entirely confined to top margin. Shows the constant **Re-entry** at Position 5 - top left stamp with prominent doubling in letters and oval above "GE" of "POSTAGE", ungummed as normally encountered. A one-of-a-kind imperforate block from the sole imperforate sheet printed, Fine+ (Unitrade cat. as two normal pairs) **8,000.00+**

Expertization: 1997 Greene Foundation certificate

Provenance: Fred Jarrett, Sissons Sale 169, December 1959; Lot 358

British North America Sale, Harmers of New York, February 1980; Lot 137

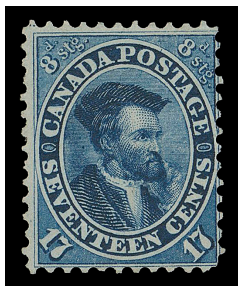


detail



- 136 ★ **19a, 1859-1862 17c Slate Blue, Perf 11 $\frac{3}{4}$** A well centered mint example, one missing perf at right and light overall toning, in the distinctive scarcer shade and with large part OG; an elusive stamp in mint condition, VF (Unitrade cat. \$5,500) **Est. 1,000.00+**

Provenance: Clayton Huff 1859 Issue Collection, Maresch Sale 207, November 1987; Lot 325



- 137 ★ **19, 1865-1867 17c Blue, Perf 12** A lovely unused example with bright colour and sharp impression on fresh paper, Fine **900.00**



- 138 □ **19i, 1864 17c Prussian Blue, Perf 12x11 $\frac{3}{4}$** Vertical pair with amazingly rich colour tied to cover fragment, endorsed "per Cunard Mail", tied by light diamond grid cancels, Toronto FE 11 65 split ring dispatch attractively struck at centre; the scarce Prussian blue shade from the March 1864 printing order, F-VF **Est. 500.00+**



- 139 ☒ **Very Rare Quadruple Cunard Line Letter Rate to United Kingdom 1864 (July 11)** Large part cover from Hamilton to Mrs. George Brown, Edinburgh, Scotland, displaying an impressive franking of strip of three and single 17c blue, perf 12x11¾, tied by light Hamilton double arc datestamps, third partial strike at left, stamps with light gum staining, small corner fault on third stamp, nevertheless a very rare quadruple Cunard Line rate cover to the UK, neat Edinburgh JY 25 64 CDS receiver on back, Fine (Unitrade 19) **Est. 2,500.00+**

Provenance: Art Leggett Cents Issue Exhibit Collection (private sale)

Census: According to Firby Cents Issue cover census only two covers have been reported paying the 68 cent Trans-Atlantic rate (both with four 17 cent stamps).



- 140 ☒ **Double Cunard Line Rate to the United Kingdom 1868 (January 13)** Cover endorsed "P. Cunard Steamer" addressed George Brown's wife in Edinburgh, Scotland, franked with two single 17c dark blue, perf 12 centrally tied by Toronto datestamp (unusual as such), second strike at left, opening tears clear of stamps, JA 27 68 receiver CDS on back. A very scarce double Cunard Line rate to the United Kingdom, Fine (Unitrade 19) **Est. 750.00+**

**TWO CENTS QUEEN VICTORIA****AN EXCEPTIONALLY CHOICE GOODALL DIE PROOF**

- 141 P 20, 1879 (circa.) 2c Queen Victoria "Goodall" Die Proof**, engraved, printed in dark yellowish brown on india paper 25 x 30mm, die sunk on card measuring 37 x 43mm, in immaculate condition, rare and most appealing, XF (Minuse & Pratt 20TC2g) **Est. 7,500.00+**

Provenance: Fred Goodhelpsen Collection (private sale)

Arthur Groten, Maresch Sale 132, September 1981; Lot 104

The "Lindemann" Collection (private treaty, circa. 1997)



142



143



144

- 142 P 20TC + varieties, 1864 2c Queen Victoria Trial colour plate proof block printed in dark rose on india paper, lower right stamp shows both a long extended vertical frameline at lower left and dash in lower right "2" variety; extended vertical frameline at UR and dash in lower right "2" varieties can also be seen on UR and LL proofs respectively, VF (Unitrade cat. as normal proofs) **1,200.00+**
- 143 P 20TCi, 1864 2c Queen Victoria An attractive plate proof block printed in claret, near issued colour, on india paper, VF **1,400.00**
- 144 P 20TCii, 1864 2c Queen Victoria Trial colour plate proof block printed in green on card mounted india paper, attractive and in choice condition, VF+ **1,600.00**

A VERY SCARCE IMPERFORATE BLOCK ON WOVE PAPER



- 145 ★ 20b, 1868 2c Rose A mint imperforate block in the distinctive shade on wove paper, large margins on three sides and clear to just touching at top right, ungummed as normally encountered. A very scarce imperforate block from the sole sheet printed, Fine+ **5,000.00**

Expertization: 2008 Greene Foundation certificate

Provenance: Captain Vivian Hewitt, Robson Lowe Ltd., December 1968; Lot 1050



Lot 146 (200% actual size)

**AN IMPRESSIVE MINT MULTIPLE
ONE OF THE BEST CENTERED AND AMONG THE LARGEST EXTANT**



- 146 ★ 20, 1864 2c Rose, Perf 12x11½** A superbly centered mint block of six from the First Printing order, in remarkably choice condition with brilliant fresh colour and large part original gum, partly disturbed. One of the best centered mint multiples that exists and also ranking among the largest extant. A wonderful block of high caliber, VF+ OG **12,000.00+**

Provenance: Dr. Lewis L. Reford, BNA Part Two, Harmer, Rooke & Co., October 1950; Lot 638

General Robert Gill, Robson Lowe Ltd., October 1965; Lot 117

The Ferranti British North America, Harmer, Rooke & Co., April 1968; Lot 101

British Empire sale, Robson Lowe Ltd., January 1970; Lot 62

The "Lindemann" Collection (private treaty, circa. 1997)

Diagonal line in lower right "2" variety can be seen on upper left and right stamps.



AN EXCEPTIONAL COMBINATION FRANKING
ON IMMACULATE ORANGE COVER



- 147 ☒ 1865 (February 21) Orange cover of outstanding quality, bearing an equally superb franking of a very well centered 1c rose, perf 12x11¾ and a nicely centered pair of first printing 2c pale carmine red, perf 12x11¾, tied by Hamilton duplex, mailed to Newbury, C.W. with partial G.W.R. West FE 22 split ring RPO transit on back. Certainly among the finest existing covers bearing this elusive franking for the 5 cent domestic letter rate, XF (Unitrade 14viii, 20) **Est. 1,500.00+**

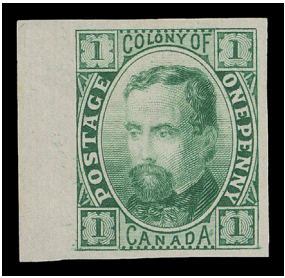
Provenance: Bill Lea Exhibit Collection of Canada Pence & Cents Postal History (private sale)

Sam Nickle, Christie's Robson Lowe, New York, March 1993; Lot 649

BRADBURY WILKINSON ESSAYS



- 148 E 1p Charles Dickens Engraved plate essay corner margin block printed in brown on white bond paper; negligible tone spot on lower left essay visible from reverse only. Blocks are rare, in fact we are unaware of a larger multiple in any colour, VF (Minuse & Pratt E-Aa) Est. 2,000.00+



- 149 E 1p Charles Dickens Engraved plate essay in green on bond paper with sheet margin at left, VF; ex. S.J. Menich (February 1997; Lot 778) (Minuse & Pratt E-Aa) Est. 500.00+



150



151

- 150 E 6p Viking's Head Engraved plate essay from top left corner position, printed in black on distinctive yellowish thick card, VF (Minuse & Pratt E-C unlisted on card) Est. 500.00+
- 151 E 6p Viking's Head Engraved plate essay, printed in brown on vertical mesh white wove paper, choice, VF (Minuse & Pratt E-Ca) Est. 500.00+

END OF AUCTION
THANK YOU

THE PLACING OF A BID SHALL CONSTITUTE ACCEPTANCE OF THE CONDITIONS OF SALE

BIDDING

1. The auction is conducted in Canadian dollars. All bids are per lot, as numbered in the catalogue. Eastern Auctions Ltd. reserves the right to withdraw any lot prior to sale, to divide a lot or to group two or more.
2. The highest bidder shall prevail at one advance over the next highest bid. Should a dispute arise between bidders, the decision of the auctioneer as to the successful bidder or the re-offering or resale of the lot in dispute shall rest entirely in the judgment of the auctioneer. **On all lots sold a commission of 18.5% on the hammer price will be payable by the buyer.** The auctioneer shall regulate the bidding and reserves the right to refuse any bid believed by him not to be made in good faith.

SALES TAXES

3. Canadian residents will be charged GST or HST as appropriate for their mailing address.
U.S. and International residents are liable for GST (5%) on the buyer's premium only.

PAYMENT FOR PURCHASES

4. U.S. funds are acceptable only at the equivalent amount shown on the invoice. Visa, MasterCard and Paypal are accepted at a charge equal to 3.5% of the hammer amount. Please include the information on your bid sheet. We also accept personal cheques, bank wire, direct deposit, or e-Transfer at no extra cost.
5. Payment for lots, including those on which opinions are desired under Condition of Sale 8, shall be made as follows:
A successful mail bidder will be notified of lots purchased and must remit before the lots are sent. A person known to us, or who furnishes satisfactory references, may at our option have purchases forwarded for immediate payment. Delivery will be to the address on the bid sheet. Proof by receipt of sending at the advised address shall constitute delivery. Postage and insurance are payable by the buyer.
6. Title shall not pass to the buyer until Eastern Auctions Ltd has received full payment.
7. Buyers agree to pay for lots as specified above and no credit is extended, a late payment charge of 2% per month is added to overdue payments, minimum \$5.00.

QUALITY AND AUTHENTICITY

8. Each lot is sold as genuine and correctly described based on individual description as modified by any specific notations in this catalogue including (but not restricted to) "Key to Cataloguing".
 - (a) **QUALITY.** Any lot, description of which is incorrect, is returnable within forty-five days from closing date of auction. If the opinion of a mutually acceptable authority is desired, this period will be extended as noted in Condition 8. All disputed lots must be returned intact in the condition received. Photographed lots are not returnable on account of centering or perforations. Lots containing more than twenty stamps, described "as is", or described as having faults are not returnable for any reason. Bidders who have had an opportunity to examine the lots prior to the sale may not return the lots.
 - (b) **AUTHENTICITY.** Any lot, which is declared other than genuine by a mutually acceptable authority is returnable, provided the lot is received within a period of four weeks from the date of the auction. Proof that a "mutually acceptable authority" declines to express an opinion is not normally grounds for the return of a lot.
 - (c) Returns must be made by registered mail.
 - (d) Lots marked or encapsulated by an expert committee are not returnable for any reason.
 - (e) Lots accompanied by an existing certificate are not returnable.



EXTENSION OF TIME

9. When an opinion from an acceptable authority is necessary the buyer must request an extension from Eastern Auctions Ltd. prior to the auction. The buyer must pay for the lot in full (a refund will be issued in the event of an unfavourable opinion). Eastern Auctions Ltd. will then submit the lot on the buyer's behalf to one of the following:

- Vincent Greene Foundation (Canada and BNA)
- Philatelic Foundation (USA)
- BPA or RPSL (British Commonwealth)

EXPENSES OF CERTIFICATION

10. Expenses shall be borne by the buyer except where the lot is other than as described and is returned within the conditions set forth above. Our responsibility is expressly limited to:

- (a) The actual cost of the opinion if up to \$50.00 or less, or
- (b) The cost of the opinion up to 5% of the sale price but not exceeding a maximum of \$100.00.
- (c) We are not responsible for expenses on the return of any lot.

This firm is a subscriber to the ASDA Code of Ethics for Auction firms.

KEY TO CATALOGUING

SYMBOLS & MAJOR ABBREVIATIONS

★	Mint	⊙	Used	E	Essay
☒	Cover	(/)	Incomplete Set	F	Forgery
(-)	Complete Set	R	Reprint	P	Proof
◆	Graded Stamp	CDS	Circular Date Stamp	L	Literature

CONDITION

The various grading of stamps are in order; **Extremely Fine; Very Fine; Fine and Very Good.** In the case of sets, large blocks, sheets, etc., the condition quoted represents the average and quality above and below this standard can be expected. Minor perf separation can be expected on larger multiples.

Mixed condition: in large lots, a range of condition can be expected, from small faults to Very Fine.

GUM

NH	Never Hinged – with full original gum in Post Office state and unmounted.
LH	Lightly Hinged – with full original gum showing some evidence of a previous hinge.
OG	Original gum – showing some evidence of a previous hinge, a portion of which may still be present.
Part OG	Part original gum.
Unused	Unused without original gum, or regummed.
Ungummed	Without gum as issued.

A NOTE ON HINGING

Bidders are reminded that, in accordance with industry standards, hinging is not described with respect to used stamps or stamps and proofs that were printed without gum. Hinging on these items is irrelevant to their condition and value. If hinging is important to you in such cases, please contact us before bidding and request further information. **We will not accept the return of used stamps or ungummed items due to hinging.**

Hinging on mint stamps is always disclosed, however, never hinged status should not be expected unless specifically stated “never hinged” or “NH”.

ESTIMATED VALUES

If an estimated cash value is given, it is shown in the description and always indicated by the abbreviation “Est.”. It is used where the lot is large or where the actual value has little relation to the catalogue price. **It represents the auctioneer’s appraisal of the true CASH value of a lot and the figure is invariably close to the actual realization.** It is useless for mail bidders to list any bids that are only a low proportion of such estimates.

CATALOGUES AND HANDBOOKS USED IN LISTING

- Unitrade Specialized (2024 Edition)
- Stanley Gibbons Commonwealth & British Empire Stamps 1840-1970 (2024 Edition)
- Robson Lowe, The Encyclopaedia of British Empire Postage Stamps Vol. V North America, 1973
- Minuse and Pratt, The Essays and Proofs of British North America, 1970
- Fred Jarrett, Stamps of British North America, Quarterman Publications, 1975
- Winthrop Boggs, The Postage Stamps and Postal History of Canada, 1974

BIDDING INCREMENTS

The auctioneer may regulate the bidding at his discretion. However, to assist absentee bidders in establishing their maximum bid for each lot, the increments shown below will be used in most cases. We recommend that written bids conform to these increments (those which do not will be reduced to the previous level).

BIDDING IS CONDUCTED IN THE FOLLOWING INCREMENTS:

Uneven bids will be rounded downwards.

Bidding	Increments		Bidding	Increments
\$50 - \$100	\$10.00		\$5,500 - \$10,000	\$500.00
\$120 - \$300	\$20.00		\$11,000 - \$30,000	\$1,000.00
\$325 - \$500	\$25.00		\$32,500 - \$75,000	\$2,500.00
\$550 - \$1,000	\$50.00		\$80,000 - \$150,000	\$5,000.00
\$1,100 - \$2,000	\$100.00		\$160,000 - \$300,000	\$10,000.00
\$2,200 - \$3,000	\$200.00		\$325,000 - OVER	\$25,000.00
\$3,250 - \$5,000	\$250.00			



To participate in our public auctions, we invite everyone to visit our website at easternauctions.com/auctions. To create an account, complete the required fields, read and accept the terms and conditions, before clicking create account. Once completed, you will receive an approval email and you will need to follow the email instructions. For further help, contact us via email or by clicking the chat box located at the bottom left on your computer screen.

TELEPHONE BIDS

Bids may be placed during office hours Monday to Friday from 8:00 AM to 5:00 PM Atlantic Standard Time by dialing 1 (506) 548-8986 or toll free in North America 1 (800) 667-8267. Bids may also be placed during the viewing sessions only. ***Please note all telephone bids must be confirmed by mail, email or fax.***

FAXING OR E-MAILING YOUR BIDS

You can fax your bids 1 (506) 546-6627 or toll free in North America 1 (888) 867-8267.
Email address: **bids@easternauctions.com**

BIDDING BY MAIL

If you wish to mail your bid sheet, please allow at least two weeks for delivery. We often receive mail bids after the auction closing. These bids are unfortunately nullified. Bidders are urged to phone in their bids and then mail in their confirmation.

WEB SITE

You can view this auction on our website **www.easternauctions.com** under eastern@home. For your convenience, we have pictured almost every lot to facilitate your bidding. This will nicely compliment the catalogue due to constraints presented by a printed format.

AUCTION AGENTS

We are pleased to recommend the following agents:

Mr. J-Claude Michaud

P.O Box 31248 • Halifax • Nova Scotia • B3K 5Y1 • Canada
Tel: 1 (902) 443-5912 • Fax: 1 (902) 445-5795
Cell: 1 (902) 456-0950
Email: jcm.pha@gmail.com or jcm.ph@ns.sympatico.ca

Mr. Nick Martin

2 Field View • Ashton Road • Siddington • Cirencester
Gloucestershire • GL7 6HB • United Kingdom
Telephone 01285 653714
Mobile: 07703 766477
Email: nick@loveauctions.co.uk
Website: www.loveauctions.co.uk

Mr. Charles Cwiakala

1527 S. Fairview Avenue • Park Ridge • IL • 60068 • USA
Phone or Fax: 1 (847) 823-8747
Email: cecwiakala@aol.com

Mr. Frank Mandel

P.O. Box 157 • New York • NY • 10014-0157 • USA
Tel: 1 (212) 675-0819 - Fax: 1 (212) 366-6462
Email: busybird1@me.com

