

**Public  
Auction**

# Eastern Auctions Ltd.



**The Glen Lundeen Collection  
of the Admiral Issue of Canada**

**2**

**Part 2**

**2**

**August 19, 2023**



# Eastern Auctions Ltd.

P.O. Box 250, Bathurst, New Brunswick, E2A 3Z2, Canada

Tel: 1 (506) 548-8986 • Fax: 1 (506) 546-6627

Toll Free Tel: 1 (800) 667-8267 • Fax: 1 (888) 867-8267

Email: [bids@easternauctions.com](mailto:bids@easternauctions.com)

Website: [www.easternauctions.com](http://www.easternauctions.com)

## PUBLIC AUCTION BID SHEET

**Sale Date: August 19, 2023**

*Please buy the following lots for me at prices not exceeding those shown. I have read the conditions of sale at the end of the catalogue and understand the 18.5% buyer's premium.*

Signature: \_\_\_\_\_

Customer #: \_\_\_\_\_

Name: \_\_\_\_\_

Address: \_\_\_\_\_

City: \_\_\_\_\_ Province/State: \_\_\_\_\_

Postal/Zip Code: \_\_\_\_\_ Country: \_\_\_\_\_

Telephone: \_\_\_\_\_

Email: \_\_\_\_\_

### Credit Card Payment

☐ Please charge my purchases to my credit card  
I agree to pay a surcharge of 3.5% of the hammer amount.



Card #: \_\_\_\_\_ Exp Date: \_\_\_\_\_

Cardholder's Name (as it appears on card): \_\_\_\_\_

Billing Address if different from address printed above:

\_\_\_\_\_  
\_\_\_\_\_  
\_\_\_\_\_  
\_\_\_\_\_  
\_\_\_\_\_  
\_\_\_\_\_

Signature: \_\_\_\_\_

References (First time bidders only): \_\_\_\_\_

\_\_\_\_\_  
\_\_\_\_\_  
\_\_\_\_\_

☐ Please tick this box if  
you are bidding in US  
Dollars:

*If necessary to secure a lot,  
you may raise my bids by:*

10% ☐ 20% ☐



Bidding is conducted in the following increments:  
**Uneven bids will be rounded downwards**

| <b>Bidding</b>  | <b>Increments</b> | <b>Bidding</b>      | <b>Increments</b> | <b>Bidding</b>        | <b>Increments</b>  |
|-----------------|-------------------|---------------------|-------------------|-----------------------|--------------------|
| \$50 - \$100    | <b>\$5.00</b>     | \$1,600 - \$3,000   | <b>\$100.00</b>   | \$32,500 - \$75,000   | <b>\$2,500.00</b>  |
| \$110 - \$300   | <b>\$10.00</b>    | \$3,250 - \$7,500   | <b>\$250.00</b>   | \$80,000 - \$150,000  | <b>\$5,000.00</b>  |
| \$325 - \$750   | <b>\$25.00</b>    | \$8,000 - \$15,000  | <b>\$500.00</b>   | \$160,000 - \$300,000 | <b>\$10,000.00</b> |
| \$800 - \$1,500 | <b>\$50.00</b>    | \$16,000 - \$30,000 | <b>\$1,000.00</b> | \$325,000 - OVER      | <b>\$25,000.00</b> |

**We are not responsible for bidder errors**  
**Please check bids and print clearly**

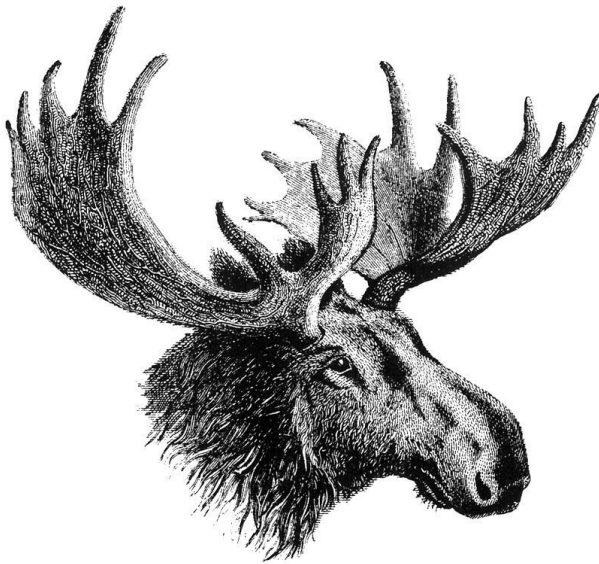
[illegible]

**Bid early to avoid disappointment**  
**View this sale on our Web Site: [www.easternauctions.com](http://www.easternauctions.com)**

You may mail, fax, e-mail or phone in your bids. Phone bids must be confirmed in writing. Mailing your bids less than two weeks prior to the sale is not recommended.

# **Eastern Auctions Ltd.**

## **PUBLIC AUCTION**



### **The Glen Lundeen Collection of the Admiral Issue of Canada Part II**

**August 19, 2023**

### **Eastern Auctions Ltd.**

P.O. Box 250, Bathurst, New Brunswick, E2A 3Z2, Canada

Tel: 1 (506) 548-8986 • Fax: 1 (506) 546-6627

[bids@easternauctions.com](mailto:bids@easternauctions.com)

[easternauctions.com](http://easternauctions.com)



# AUCTION INFORMATION

---

For assistance and further information please contact:

**SPECIALISTS IN STAMPS:**

Gary Lyon  
Yohann Tanguay

**SOFTWARE ENGINEER:**

Ron Kozlowski

**CONSIGNOR SETTLEMENTS**

**ACCOUNTS RECEIVABLE:**

Cindy Rogers

**CATALOGUE EDITORS:**

Gary Lyon  
Yohann Tanguay  
Luc Doucet

---

## VENUE

Eastern Auctions Ltd.  
132 Main Street  
Bathurst, New Brunswick  
E2A 1A4  
Tel: 1 (506) 548-8986

TERMS OF SALE AND AUCTION AGENTS  
LISTED AT THE BACK OF THE CATALOGUE.

**Viewing Sessions** (Appointment Recommended)

**Thursday August 17, 2023** – 9:00am to 4:00pm

**Friday August 18, 2023** – 9:00am to 12:00pm

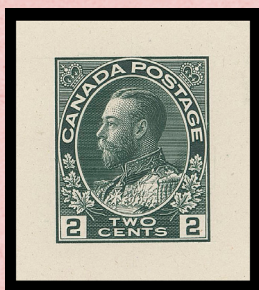
**Saturday August 19, 2023** – 9:00am to 12:00pm

**Auction Session**

**Saturday August 19, 2023** – 1:30pm (Lot 501-638)

## Highlights of the Glen Lundeen Admiral Collection, Part 2

Leopold Beaudet



The Glen Lundeen Admiral collection, among the finest ever formed, has a wealth of die proofs, plate imprint material, and marginal markings such as lathework, pyramid guides, and R-GAUGE inscriptions. Part I of the collection, sold on 18 March, featured many rare to unique items. This auction and Part 3 to follow will do no less.

American Bank Note Co. (ABN) prepared two sets of dies of the original seven values (1¢, 2¢, 5¢, 7¢, 10¢, 20¢, and 50¢). One set was for stamp production. These dies were given numbers, engraved with a 23.5 mm ABN inscription, and hardened. The second set was for printing die proofs beyond those required for approval by the Post Office Dept. These dies were engraved with a 25.0 mm ABN inscription, but were not given a die number and were not hardened [3]. This auction has proofs from both sets. Notable among the proofs of the production dies are three that bear signatures of approval from the Post Office (lots 506, 518, and 520). There are also two proofs of the 2¢ made before the die number and ABN inscription were added (lots 503 and 504). The proofs are of the original die before the upper right vertical line was strengthened by retouching in December 1912. Lot 504 is particularly notable because it is in green, the colour of the 1¢, and has the pencilled annotation “Wrong Color (Red)”.

For aficionados searching for the lathework types on each value, the key items in this auction include type B inverted lathework on the 3¢ brown (lot 561) and type D lathework on the 50¢ (lot 596). There are also desirable lathework varieties. On many plates with type A lathework, the plate and printing order (PO) number can be found engraved in the lathework. Such is the case with the 20¢ (lot 593). Another desirable variety is doubling of the lathework where the beginning of a segment of lathework overlaps the end of the previous segment. This occurs on many plates with type A lathework. Examples on plates 40, 41, and 42 of the 2¢+1¢ brown are offered in lots 631, 632, and 633. This variety also occurs on type B lathework. An example on the 3¢ brown is offered in lot 560. The doubling occurs below the stamps in column 3 of the lower right pane from plate 10.

I do not know of doubled lathework on type C, but there is an intriguing variant on the 1¢ green (lot 521). Type C lathework (and types B and D1) consist of five elements: the lathework pattern itself, top and bottom horizontal lines that border the pattern, and top and bottom horizontal lines above/below the pattern. On the 1¢ variety, the top line is doubled. So is the top border, although the doubling is not obvious. This variety occurs below the stamps in column 5 of the lower left pane from plate 168. Examination of the plate proof at Library and Archives Canada (LAC) reveals similar doubling of the two lines at the bottom. Why is this intriguing? Although all four lines are doubled, the lathework pattern is not. Four 1¢ green plates have type C lathework: 167 to 170. All four have this variety in two places along the band of lathework.

Glen Lundeen also formed an impressive showing of plate imprint material. Many of the items come from collections formed by Frederick T. Norris and Major K. Hamilton White while the Admiral Issue was current. Glen also compiled a census of Admiral plate imprint blocks based on holdings from 11 collections and five auctions. The census, referred to several times in this catalogue, is posted on the BNAPS website [2], and will be a useful reference to bidders of the plate material.





Lundeen [1]. Given his source, Norris acquired some elusive plate material. For example, plates 9 and 10 of the 1¢ War Tax are extremely scarce. Only one example is known of plate 9, the one offered as lot 620.



ABN engraved plate imprints on the upper panes of every plate, and on the lower panes until lathework was eliminated. Well, almost. Lot 533 consists of upper right strips of the 1¢ green with plate numbers 163 and 164 hand-punched in the pane margin. On the proofs of plates 163-164 at LAC, there are no plate imprints on the upper panes (the hand-punching was done after the proofs were printed) although imprints exist on the lower panes below the lathework. Imprints are also missing on the bottom panes of plates 5 and 6 of the 2¢ carmine and the upper panes of plates 64 and 65 of the 3¢ brown.

In February 1911, ABN started punching the PO number on the plate. If a plate was reused for a subsequent order, the first PO number was defaced and a second punched in. In February 1915, ABN moved from hand-punching to engraving. Only if the plate was reused for a subsequent order was a new PO number punched in by hand. In November 1915, the nature of the PO engraved on the plate changed. A number was assigned to each stamp denomination and printing format. One or two letters appended to the number indicated the printing order for which the plate was manufactured. Hand-punching was discontinued [4].

This evolution of the printing order number is illustrated in the plate imprints for the 1¢ green (lots 522 to 533) and 2¢ carmine (lots 538 to 552). Most of the plate imprint pieces are in strips of ten or blocks of 20, thereby preserving the printing order numbers associated with the plate number. Using the 2¢ as an example, the PO numbers are hand-punched on plates 1 to 78. Lot 542 consists of an upper right strip of ten from plate 69 with PO 174 struck out and 236 added.

The PO number was engraved on plates 79 to 92. Lot 545 has strips of ten from plates 91 and 92 with PO 348 engraved on the plate. From plate 93 onwards, including all the 2¢ green sheet plates, the number 910 is engraved on the plate, followed by one or two letters to indicate the PO.



Frederick T. Norris lived in Bay City, Michigan, and bought his plate imprint material directly from the Post Office Dept. His Admiral collection was eventually acquired by J. N. Sissons who sold it to Clare M. Jephcott. The collection was auctioned by R. Maresch & Son in June 1990, except for the War Tax portion which was sold intact in the 1980s to a Florida collector, John Tomlinson. Saskatoon Stamp Centre bought the Tomlinson Admirals and sold the War Tax stamps to Glen



The 2¢ carmine retouched die, produced in December 1912, is well known. Not so well known is a second retouch of the die in March 1920. The vertical line of the left numeral box was strengthened along with other parts of the design. Marler discovered this retouch, and called it the retouched die, second state [4]. Plates 149 to 160 were produced from this state of the die. Strips of ten from plates 149-151 are offered in lots 551 and 552. The upper left strip of plate 149 is particularly interesting because the stamps in column 1 of the upper and lower left panes are from a relief made before the die was retouched a second time. Thus, the strip has one stamp from the retouched die, state 1, and nine from the retouched die, state 2.

Besides getting Admiral plate blocks from the Post Office Dept., Norris was also the beneficiary of a part-perf half sheets of 200 of the 1¢ yellow, 2¢ green, and 3¢ carmine sidewise coils. The sidewise coil plates consisted of two blocks of 200 stamps (ten rows of 20) separated by a 22 mm horizontal gutter. The Norris half sheets consisted of the gutter with five rows of stamps above and below. The half sheet was split into five gutter blocks of 12 stamps and five of four stamps [1]. Given the right pane margin, deducing that the blocks of 12 in the Lundeen collection (lot 601) are from the rightmost columns of the sheet (columns 19 and 20) is a no-brainer. But what coil plates do they come from? With the help of plate characteristics and the plate proofs at LAC, I found that the 1¢ block was from plate 12. Plates 11 and 12 are also the source of the part-perf coils with type B lathework in the bottom pane margin. The used block in lot 602 is from plate 11, lower right pane, columns 5 and 6.



Lot 612 features another sought-after item: the imperforate tête-bêche booklet panes of the 1¢ yellow, 2¢ green, and 3¢ carmine. Marler divided the panes on the booklet plates into three groups: left, centre, and right. Each group consists of two columns of panes, upright

on the left and inverted on the right. The 1¢ and 3¢ plates have seven rows of panes. The 2¢ plate has ten. All the tête-bêche panes come from a single group, which means that only seven complete sets can exist plus three extra copies of the 2¢. One of the three was cut up to produce two tête-bêche pairs of stamps. Using a 1200 dpi image provided by Glen Lundeen and the plate proofs at LAC, I was able to plate Glen’s 2¢ tête-bêche panes. They come from row 4 (panes 7 and 8) of the left group of plate 24.

## References

1. Leopold Beaudet, “The Frederick T. Norris Admiral Collection”, *The Admiral’s Log*, Vol. XIII, No. 1, Dec. 2013.
2. Glen Lundeen, *Admiral Plate Census*, BNAPS, 2021. Available on the BNAPS website: <https://bnaps.org/studygroups/admirals/Census/AdmPlateCensus-About.htm>
3. George C. Marler, “Proofs of the 1911-25 Issue of Canada, *The Essay Proof Journal*, Vol. 8, No. 3, July 1951. Reprinted in *BNA Topics*, Vol. 29, No. 6, June-July 1972.
4. George C. Marler, *The Admiral Issue of Canada*, American Philatelic Society, 1982.





The Glen Lundeen Collection  
of the Admiral Issue of Canada, Part II  
Lot 501-638

Saturday August 19, 2023 begins at 1:30pm Atlantic Time (AST)

**ADMIRAL PROOFS**

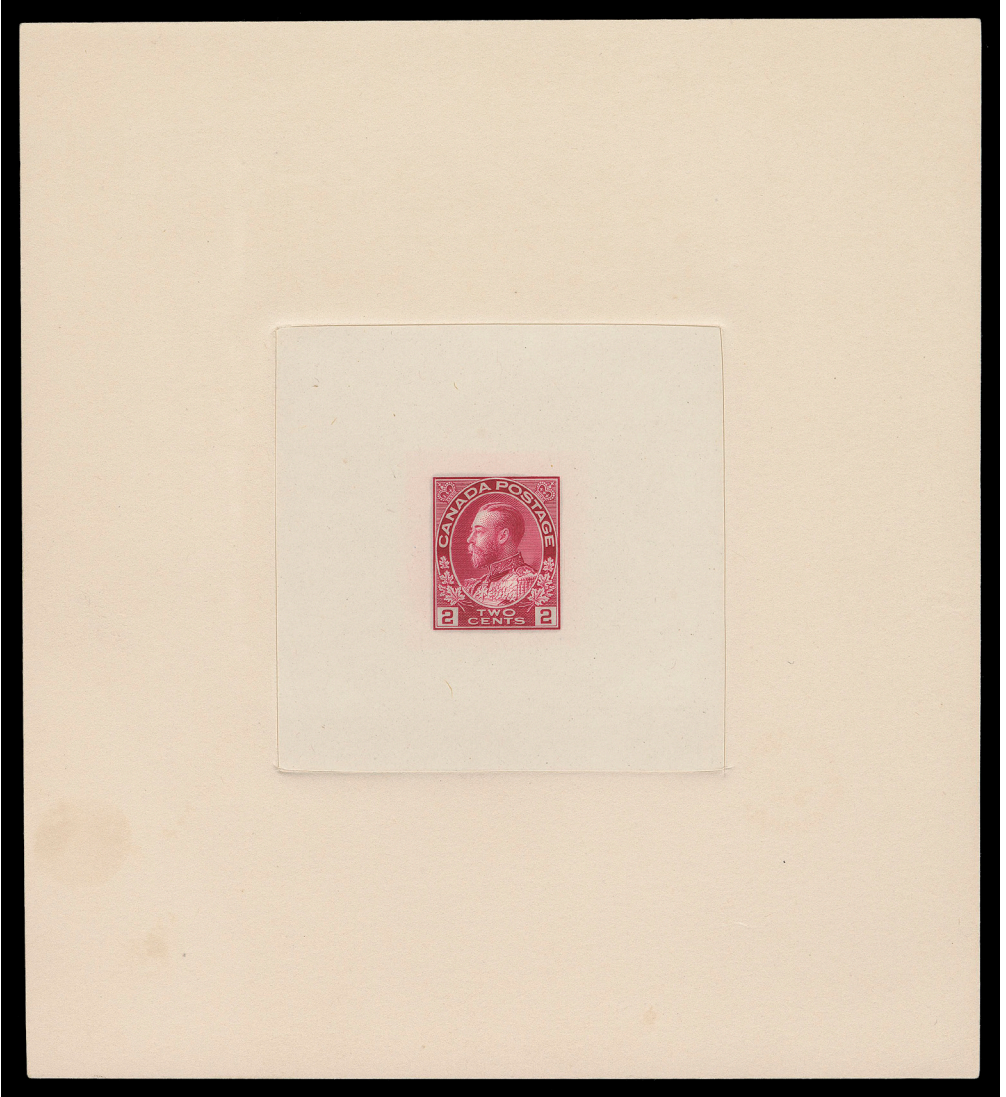


- 501 P 104, 1912 1c Dark Blue Green (Original Die)** Die Proof printed in the issued colour, the original colour on india paper 63 x 63mm sunk on nearly same-size card showing die sinkage area on all four sides; the hardened die with die number "F-212" and ABNC imprint (23.5mm wide), remarkably fresh and choice, XF (Minuse & Pratt 104 A P1a) **Est. 2,000.00+**



- 502 P 105, 1924 1c Yellow, Die II** Die Proof in issued colour, the new die on india paper 55 x 59mm, die sunk on slightly larger card 78 x 77mm; the hardened die showing die number "X-G-86" and "DUPLICATE" imprint above design, fresh and VF (Minuse & Pratt 105 C P1a) **Est. 1,500.00+**

**SUPERB ORIGINAL DIE PROOF  
WITHOUT DIE NUMBER AND IMPRINT**



- 503 P 106, 1911 2c Deep Rose Red (Original Die)** An exceptional Large Die Proof in the issued colour (similar to the intended first printing colour) on india paper 63 x 62mm, die sunk on large card 134 x 147mm, slight ageing on back only. An unhardened die without die number or imprint, very unusual as such and THE FIRST ONE WE RECALL SEEING. A showpiece, VF (Unlisted in Minuse & Pratt)  
**Est. 5,000.00+**

Interestingly enough, this particular unhardened 2c die proof is not even mentioned in the exhaustive Marler handbook, nor listed in Minuse & Pratt - another indication of its great rarity. Since the die of 2 cent Admiral was the first one produced (F-211) in 1911, we have reasons to believe this may be the EARLIEST KNOWN DIE PROOF of all denominations of the Admiral series.





**SPECTACULAR AND MOST INTRIGUING DIE PROOF  
IN THE INTENDED COLOUR OF THE ONE CENT FIRST PRINTING**



- 504 P 106, 1911 2c Admiral** An outstanding Large Die Proof, engraved, printed in dark blue green, very similar to the intended first printing colour of the One cent, on india paper 62 x 62mm sunk on large size card 135 x 148mm; the Original unhardened Die without die number or imprint, annotated in pencil "Wrong Color (Red)" at bottom left; light card creasing at bottom right. A great, perhaps UNIQUE proof of wonderful appeal, VF (Unlisted in Minuse & Pratt) **Est. 5,000.00+**

A plausible scenario presents itself:

Die proof shows some engraver's unburnished thin lines similar to those are found on the 2c deep rose red proof (offered in this sale). The colour is similar to the first printing of the One cent and has the "wrong colour" annotation. These clues might lead one to believe that this first proof of the 2 cent (and first denomination of the series) was first produced in green, before the approved "Red" colour.

Whatever the circumstances leading to the production of this particular die proof, we are unable to find another example. A wonderful conversation piece and certainly a one-of-a-kind proof.

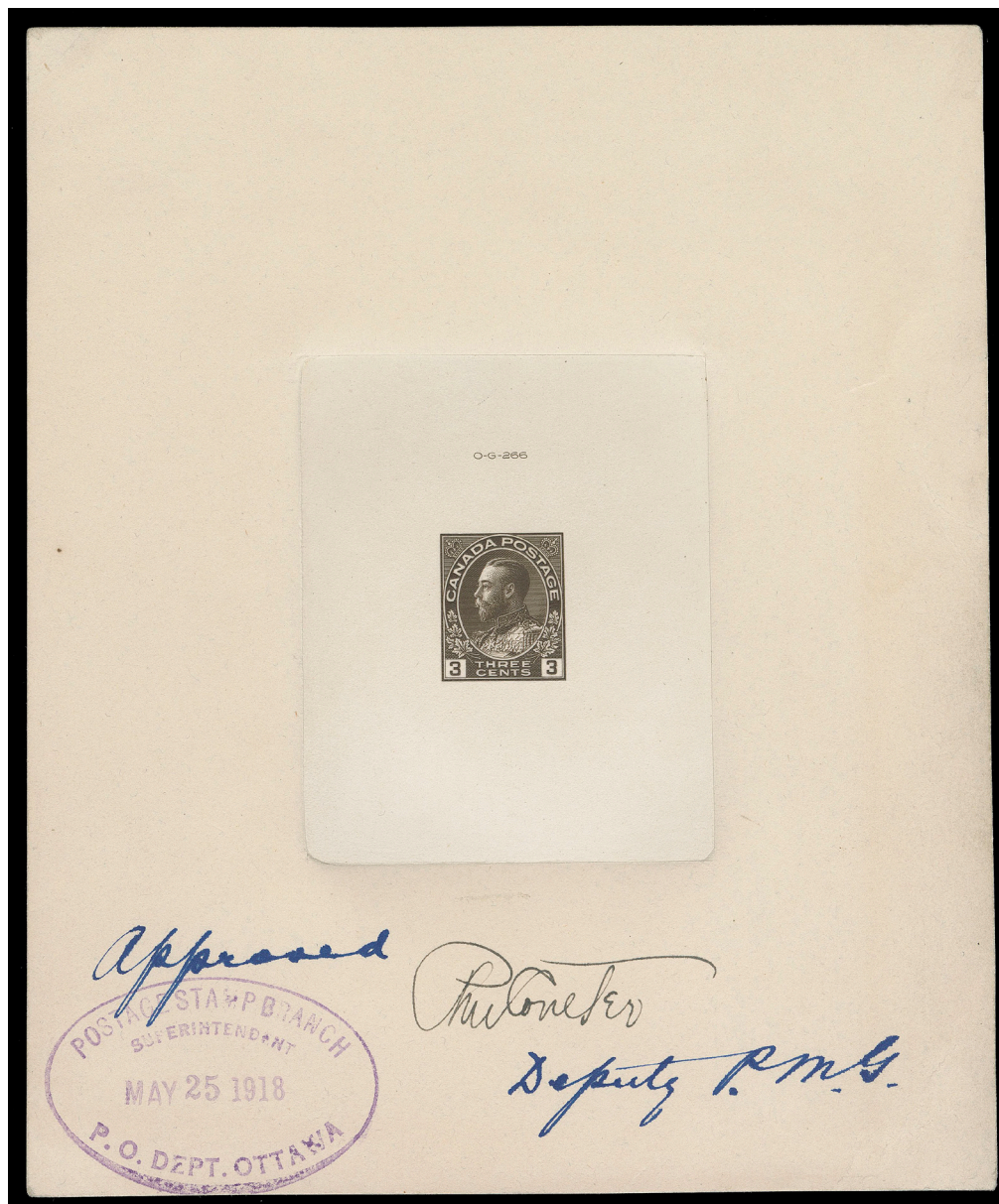


- 505 P 106, 1912 2c Carmine (Retouched Frameline)** Die Proof printed in the issued colour, with retouched vertical line in upper right spandrel, the original colour on india paper 63 x 62mm, die sunk on slightly larger card 72 x 73mm; the hardened die with die number "F-211" and ABNC imprint (23.5mm wide). A beautiful proof and in pristine condition, XF (Minuse & Pratt 106 A P1a) **Est. 2,000.00+**





**THE DEPUTY POSTMASTER GENERAL APPROVED AND SIGNED  
THREE CENT DIE PROOF**



- 506 P 108, 1918 3c Dark Brown, Die I** The extraordinary "Marler" Large Die Proof, engraved, printed in a darker shade of brown on india paper 59 x 73mm, die sunk on large card 138 x 169mm; die number "O-G-266" above design, manuscript "Approved Deputy P.M.G." and signed by Deputy Postmaster General R.M. Coulter, handstamped Postage Stamp Branch Superintendent MAY 25 1918 P.O. Dept. Ottawa oval in blue and on reverse double-ring ABNC Ottawa MAY 20 1918 datestamp in red; minor peripheral creasing of no importance for this visually striking, officially signed Die Proof. A wonderful showpiece and as far as we know, the only one known in private hands, VF (Minuse & Pratt 108 A Pla) **Est. 5,000.00+**

Provenance: George Marler, Part 2, Maresch Sale 150, December 1982; Lot 1322



507 P 111, 1911 5c Dark Blue Die Proof printed in the first issued colour on india paper 63 x 63mm, die sunk on slightly larger card 81 x 78mm; the hardened die with die number "F-213" and ABNC imprint (23.5mm wide) shown below design. A beautiful and very scarce proof in pristine condition, VF (Minuse & Pratt 111 A P1) **Est. 2,000.00+**



508 P 112, 1925 5c Violet (Redrawn Framelines) Die Proof in issued colour, the re-engraved die on india paper 55 x 59mm, die sunk on slightly larger card 77 x 75mm; the hardened die showing die number "F-213" and ABNC imprint (23.5mm long) below design; in pristine condition, scarce and VF (Minuse & Pratt 112 A P1a) **Est. 1,500.00+**





**A MARVELOUS AND RARE UNISSUED SIX CENT  
DIE ESSAY IN PRISTINE CONDITION**



- 509 E 113, 1921 6c Admiral Die Essay** Prepared but never issued, engraved and printed in carmine on india 55 x 59mm, die sunk on slightly larger card 75 x 77mm; hardened die showing die "OG-421" number above design. In immaculate condition; rare and desirable, XF (Minuse & Pratt E-1a, unlisted in this colour) **Est. 5,000.00+**



510 P 114, 1924 7c Red Brown Die Proof in issued colour on india paper 54 x 57mm, die sunk on slightly larger card 74 x 77mm; the hardened die with die number "F-214" and ABNC imprint (23.5mm long) below design; a beautiful proof in pristine condition, VF (Minuse & Pratt 114 A P1a) Est. 1,500.00+



511 P 116, 10c Plum Die Proof printed in the issued colour on india paper 61 x 73mm mounted on nearly same-size card, showing die sinkage area; the unhardened die without die number but with ABNC imprint (25mm wide) below design, superb and very attractive, VF (Minuse & Pratt 116 B TC1e) Est. 2,000.00+





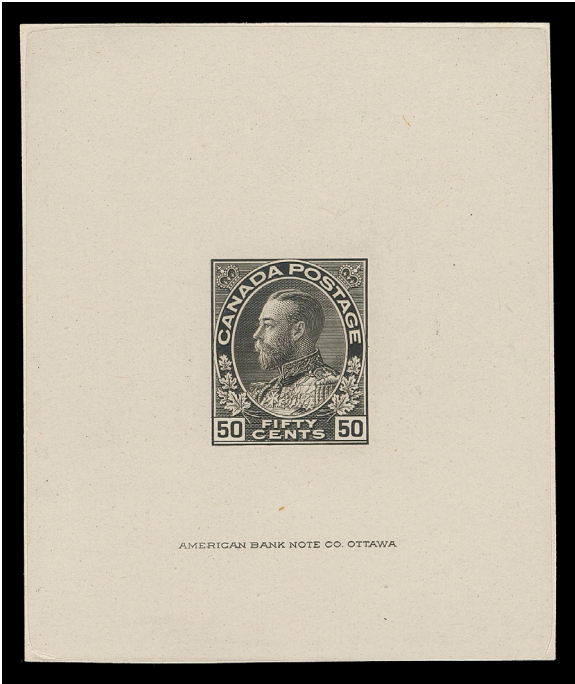
- 512 P 118, 1925 10c Bistre Brown** Die Proof in issued colour (last colour change) on india paper 50 x 53mm, die sunk on slightly larger card 72 x 72mm; the hardened die showing die number "F-218" and ABNC imprint (23.5mm long) below design; attractive, VF and scarce (Unlisted in Minuse & Pratt)

**Est. 1,500.00+**



- 513 P 119, 20c Olive Green** Die Proof in issued colour on india paper 55 x 59mm, die sunk on card 72 x 75mm; the hardened die showing ABNC imprint (23.5mm wide) and die number "F-217" below design, choice and VF (Minuse & Pratt 119 A P1)

**Est. 1,500.00+**



514 P 120, 50c Black (Original Die) Die Proof printed in the issued colour, the first printing colour on india paper 61 x 73mm mounted on nearly same-size card, showing full die sinkage area; the unhardened die without die number but with larger ABNC imprint (25mm wide) below design. A very scarce proof, VF (Minuse & Pratt 120 B TC2a) **Est. 2,000.00+**



515 P 120, 50c Black Brown (Re-engraved) Die Proof in the issued colour of the re-engraved die of 1925 on india paper 56 x 58mm, die sunk on slightly larger card 77 x 77mm; the hardened die showing ABNC imprint (23.5mm wide) and die number "F-219" below design, VF and attractive (Minuse & Pratt 119 A P1) **Est. 1,500.00+**





- 516 P MR1-MR2, 1915 1c & 2c Admiral War Tax The set of two Large Die Proof in the issued colours on india paper with rounded corners 61-62 x 63-65mm, sunk on slightly larger cards 86 x 92mm; showing die number "OG-66" and "OG-67" respectively above designs. An attractive and very scarce duo, VF (Minuse & Pratt MR1P1a-MR2P1a) **Est. 3,500.00+**

Provenance: Ed Richardson, Maresch Sale 101, April 1978; Lot 437, 439



- 517 P **MR2, 1915 2c Dark Carmine War Tax** An impressive Large Die Proof on india paper 52 x 56mm die sunk on large card 165 x 172mm; the unhardened die without die number. A rare die proof unlisted in both Minuse & Pratt, VF+ **Est. 2,500.00+**

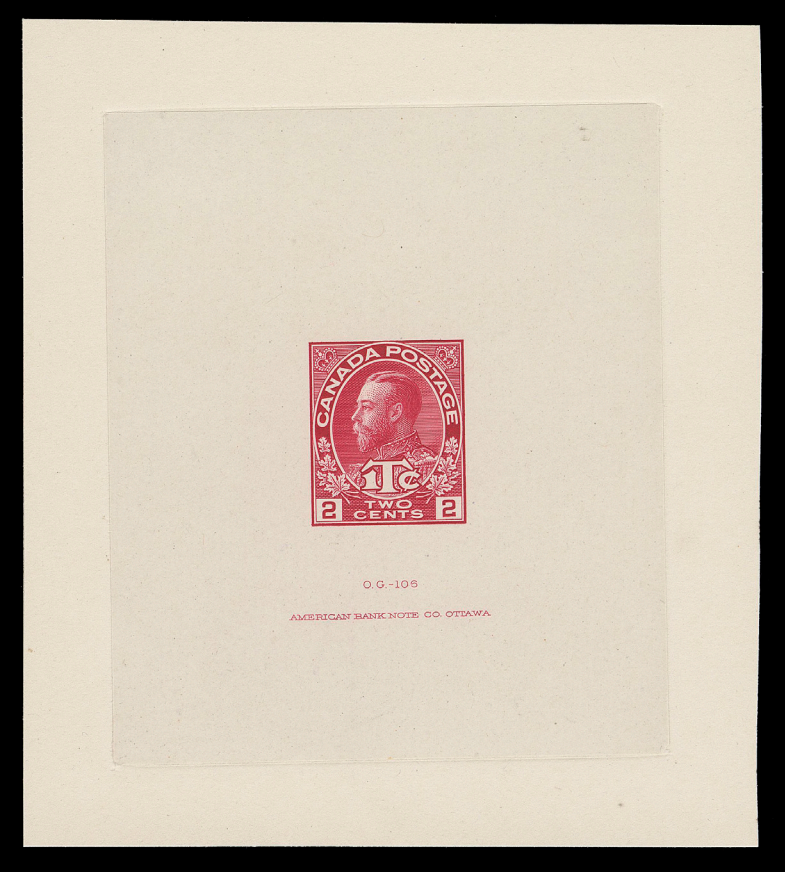




**VERY RARE WAR TAX DIE PROOF  
APPROVED AND ARCHIVAL HANDSTAMPED**



- 518 P MR3, 1915 2c+1c Carmine, Die I A** remarkable Approved Large Die Proof on india paper 63 x 76mm die sunk on large card 127 x 173mm, light india wrinkling and card tear at foot. The hardened die with die "OG-100" number above design, oval Postage stamp branch Superintendent Dec 13 1915 P.O. Dept. Ottawa handstamp in violet and pen manuscript "approved RMC" (by Deputy Postmaster General Robert Miller Coulter). A striking officially signed "approved" die proof ideal for exhibition, VF (Minuse & Pratt MR3P1a, officially signed) **Est. 3,500.00+**

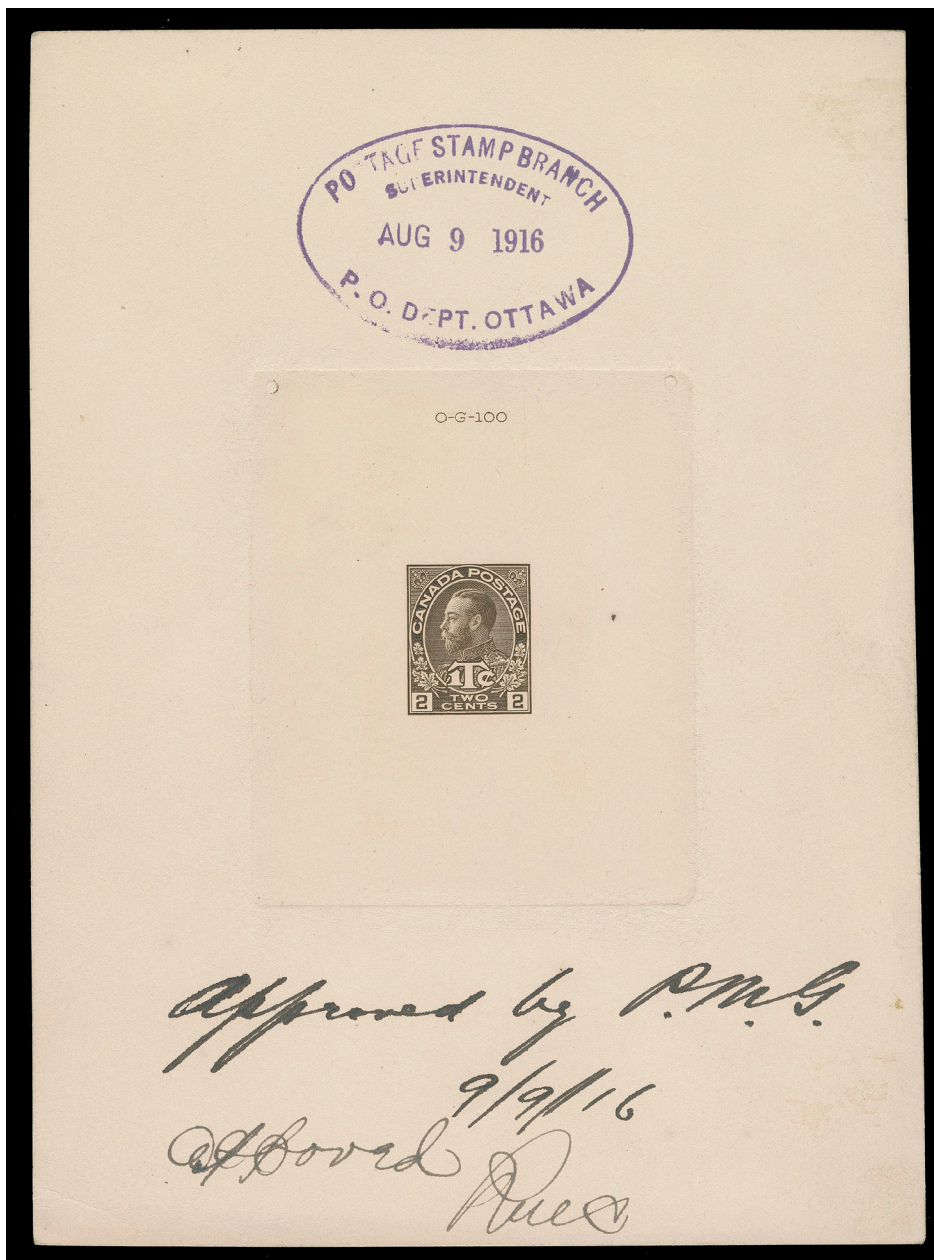


**519 P MR3a, 1916 2c+1c Rose Carmine, Die II War Tax** Large Die Proof in the issued colour on india paper 64 x 75mm die sunk on larger card 85 x 95mm; the hardened die with die number "OG-106" and ABNC imprint (23.5mm long) below. An appealing, brilliant fresh example of this rarely seen War Tax proof, XF (Minuse & Pratt Die II unlisted in this colour) **Est. 2,500.00+**





THE DEPUTY POSTMASTER GENERAL APPROVED AND SIGNED WAR TAX  
ARCHIVAL HANDSTAMPED DIE PROOF  
ONE OF TWO KNOWN



- 520 P **MR4a, 1916 2c+1c Brown, Die I War Tax** A marvelous Approved Large Die Proof on 63 x 76mm india paper, die sunk on large card 126 x 173mm; the hardened die showing the number "OG-100" above design; oval Postage Stamp Branch Superintendent Aug 9 1916 P.O. Dept. Ottawa handstamp in violet and manuscript in black ink "approved by P.M.G. 9 / 9 / 16" by Deputy Postmaster General "RMC" (Robert Miller Coulter). Small negligible corner card crease at bottom left. A fabulous proof of wonderful appeal; we are aware of only one other (Stan Lum, September 2013; Lot 882 & Eastern Auctions, February 2018; Lot 1213). A showpiece, VF (Minuse & Pratt Die I, unlisted in this colour)

Est. 5,000.00+

ADMIRAL STAMPS

*Featuring a superlative offering of plate numbered multiples, including early Printings, shades, rare lathework and other positional imprint blocks.*



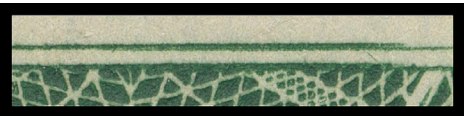
- 521 ★ **104ii, 1920 1c Dark Yellow Green** An exceptionally fresh mint block showing the elusive Type C lathework, full strength and with **unusual doubling of horizontal guidelines above lathework area**, quite prominent, small hinge on lower left stamp, otherwise NH; an interesting variety on a scarce lathework multiple, Fine+ (Unitrade cat. as fine hinged block) **1,000.00+**



- 522 ★ **104b shade + variety, 1912 1c Grey Green** Upper Right mint Plate 7 block of twenty, printing order number "100" at left, quite well centered, sealed tear entirely in margin above Position 6 and a few split perfs on bottom centre pair, eighteen stamps are NH; a highly attractive early plate block in an exceptional shade, VF (Unitrade cat. \$3,360+ as normal blue green shade) **Est. 1,000.00+**

**A Strong Re-entry is clearly visible on Position 6**, with prominent doubling of both numerals, in lower horizontal & LR corner framelines and marks in "CENT" among other traits; listed and illustrated in Marler (Figure I.12). A remarkable plate variety.

Although we are of the opinion that this is of the scarcer grey green (which Unitrade lists as from Plate 9 only), we have catalogued this plate block as blue green.



Lot 521 – detail of doubling of horizontal guidelines  
From LL pane, Plate 168 according to Leopold Beaudet



Lot 522 - detail of Plate 7UR6 Strong Re-entry





- 523 ★ **104b, 1912 1c Blue Green** Upper left Plate 14 strip of ten with printing order number "110", in a beautiful radiant colour on fresh paper, LH in selvedge, stamps F-VF NH (Unitrade cat. \$1,050)  
Est. 250.00+



- 524 ★ **104b, 1912 1c Blue Green** Four brilliant fresh matching upper left plate strips of ten with consecutive plate numbers 23 to 26; all with nearly VF centering, hinged in selvedge only leaving all stamps NH, distinctive rich colour; each with printing order number hand-punched at right, last two with penciled date of acquisition, F-VF (Unitrade cat. \$4,200)  
Est. 1,000.00+



- 525 ★ **104c, 1912 1c Deep Blue Green** A remarkably fresh, well centered upper left Plate 30 strip of ten with printing order number "131"; a very elusive shade. Faint natural gum skip at top, LH in selvedge, all stamps NH, VF, date of acquisition at left. (Unitrade cat. \$1,200 as hinged)  
Est. 500.00+

- 526 ★ **104, 1913 1c Dark Green** Lower margin Plate 51 block of twenty with printing order number "146" at right, radiant colour in unusual shade among the blue green shades of the period, quite well centered, hinged on six stamps leaving fourteen NH; the only reported Plate 51 multiple according to Glen Lundeen plate census on the BNAPS website, VF (Unitrade cat. \$1,920)

*Illustrated on Page 23 Est. 300.00+*





526



527 ★ 104 shades, 1914 1c Green & Shades A nice lot of seven strips of ten with consecutive plate numbers - Plates 86 to 92; Plate 86 is a LL strip, others all UL corner position with printing order number; in four different shades of green, reasonably to quite well centered on four strips; Plate 86 with six NH, others LH in selvedge leaving all stamps NH, F-VF; each with penciled date of acquisition. (Unitrade cat. \$6,580 as cheapest shade) **Est. 1,500.00+**





- 528 ★ **104, 1915 1c Dark Green** Upper Left Plate 100 strip of ten with printing order number "265", well centered with deep colour, LH in margin, stamps NH, penciled "July '15" date of acquisition; the only reported Plate 100 multiple according to Glen Lundeen plate census on the BNAPS website, VF (Unitrade cat. \$1,200) **Est. 300.00+**



- 529 ★ **104, 1915 1c Dark Green** A nice group of four strips of ten with consecutive plate numbers: UL Plate 113, LH in selvage only, stamps NH; UL Plates 114 and Plate with eight stamps NH; and LR Plate 116 seven stamps NH; first two with printing order number "365" at right and first three plates with "Jan '16" date of acquisition, all four VF centered. (Unitrade cat. \$4,240) **Est. 750.00+**





- 530 ★ 104, 1916 1c Dark Green Matching upper left Plates 125 and 126 strips of ten with printing order number at right, both well centered with fresh colour, LH in top selvage, all stamps NH; both with penciled date of acquisition, latter with "hairlines" variety, VF. (Unitrade cat. \$2,400) Est. 500.00+



- 531 ★ 104, 104e, 1919-1920 1c Green & Yellow Green An appealing group of four strips of ten with consecutive plate numbers: UR Plate 157 and 158 and UL Plates 159 and 160. Three strips well centered and in the yellow green shade, Plate 159 reasonably centered in dark green shade; first two plates hinged on two and four stamps respectively, Plate 158 shows unusual pre-printing paper fold on Position 7; Plate 159 and 160 are LH in selvage, stamps NH, F-VF (Unitrade cat. \$3,820) Est. 750.00+





- 532 ★ **104e + varieties, 1920 1c Yellow Green** Matching Upper Left Plates 161 & 162 strips of ten with printing order numbers, both equally well centered with rich colour on bright fresh paper, LH in top margin leaving all stamps NH; a very attractive duo, penciled on same day "Mch 30 / 21" date of acquisition, VF. (Unitrade cat. \$2,400+) **Est. 400.00+**

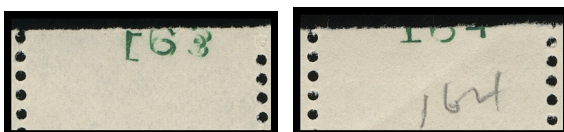


*detail*

**The Plate 162, Position 3 shows Re-entry** with bottom right "1" numeral doubled; and **Position 10 with lesser Re-entry** with doubling in lower right box among other traits; both listed in Marler.



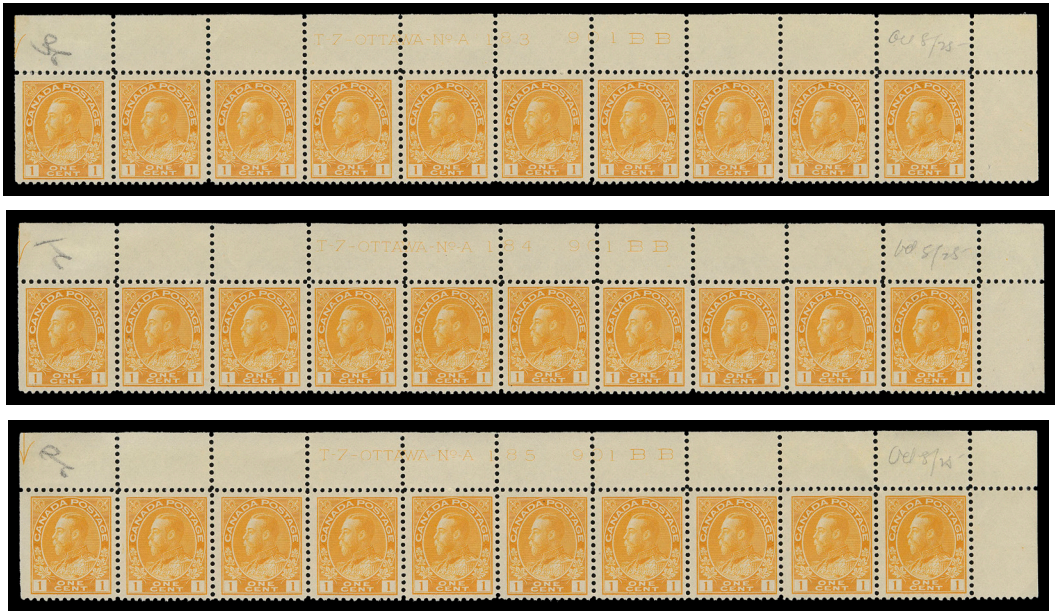
- 533 ★ **104e, 1920 1c Yellow Green** Matching Upper Right strips of ten without imprints, hand-punched "163" and "164" respectively, former VF and latter Fine, hinged in margin only leaving all stamps NH. Likely the only instance among the 199 plates on the One Cent where a simple plate number was hand-punched on the plate rather than the usual plate imprint engraved on the plate; both penciled "July 19 '22" date of acquisition. A great duo for the specialist, F-VF (Unitrade cat. \$1,400+) **Est. 300.00+**



*detail of hand-punched plate numbers "163" and "164"*



534 ★ 105, 1920 1c Yellow, Die I (Wet Printing) A selected mint corner margin block displaying full strength Type C lathework, well centered, deep colour on fresh paper, scarce this nice, VF NH **3,000.00**



535 ★ 105d, 1924 1c Orange Yellow, Die II (Dry Printing) Matching upper right strips of ten with consecutive plate numbers 183 to 185, first and last with nearly VF centering. Plate 184 well centered; each displays bright fresh colour, hinged in selvage with faint trace of hinge mark on straight edged stamp, other nine NH, F-VF, each with pencil date of acquisition. (Unitrade cat. \$1,790) **Est. 400.00+**





- 536 ★ **105f, 1924 1c Yellow, Die I (Dry Printing)** Matching upper left Plates 186 & 187 strips of ten with printing order number, light impression of the imprint typical on these elusive Die I dry printings, left margin and straight edged stamps hinged leaving nine NH; a very scarce duo, penciled same-day "July 16 '26" date of acquisition, VF (Unitrade cat. \$2,800) **Est. 600.00+**



- 537 ★ **105d, 1925 1c Orange Yellow, Die II (Dry Printing)** Matching upper left Plate 192 & 193 strips of twenty, precancelled London Style 3 (Standard Precancel #3-105d) former with small etched "H" above "R" in "R.E.B.", minor perf separation in selvage, both with first column hinged, leaving eighteen F-VF NH **Est. 300.00+**

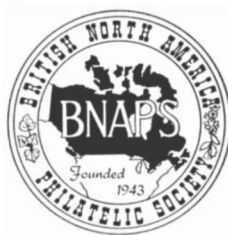
## YOU ARE INVITED TO JOIN THE BRITISH NORTH AMERICA PHILATELIC SOCIETY

*BNA Topics, quarterly journal*

Benefits include annual convention and exhibition, more than 20 specialized study groups, regional groups in many cities in Canada and the United States, online sales circuits, the Horace Harrison online library and a generous discount on BNAPS book purchases.

Contact: **P. Charles Livermore, Secretary**  
**288 Cook Rd**  
**East Aurora, NY 14052 USA**  
**email: [secretary@bnaps.org](mailto:secretary@bnaps.org)**  
**phone: 917 863 9011**  
**website: <http://www.bnaps.org>**

**BNAPS – The Society for Canadian Philately**



AN IMPRESSIVE DUO OF INTACT PLATE 1 & 2 BLOCKS  
IN A DISTINCTIVE AND ATTRACTIVE SHADE



- 538 ★ 106c, 1911 2c Rose Carmine A mint Lower Right Plate 1 block of twenty, printing order number "83", hint of ageing along top perf tips, otherwise remarkably fresh, well centered for such a large plate multiple, in a very distinctive shade resembling the elusive pink colour, full pristine original gum. **The largest recorded 2 cent multiple from Plate 1** according to Glen Lundeen plate census on the BNAPS website , VF NH (Unitrade cat. \$2,400+) **Est. 750.00+**



- 539 ★ 106c, 1911 2c Rose Carmine A very appealing and unusually choice Upper Left mint Plate 2 block of twenty, printing order number "83" at right, third stamp in top row with tiny spot of glazed gum, otherwise NEVER HINGED. A beautiful plate block in a lovely colour closely resembling the pink shade, VF (Unitrade cat. \$2,400+) **Est. 750.00+**



- 540 ★ 106ii, 1912 2c Deep Rose Red Matching upper right Plates 27 & 28 strips of ten with printing order number "138", LH in selvedge only, stamps NH; both with penciled "Apl 28 / 13" date of acquisition at right, F-VF (Unitrade cat. \$1,700) **Est. 400.00+**





- 541 ★ **106ii, 1913 2c Deep Rose Red** A fabulous, well centered upper right Plate 46 strip of ten, printing order number "195" at left, amazing colour distinctive among the myriad shades found on this particular stamp, LH in selvage, stamps with full immaculate original gum; penciled "9 Nov 16" date of acquisition, VF+ NH (Unitrade cat. \$1,500+) **Est. 500.00+**



- 542 ★ **106, 1914 2c Carmine** An exceptionally fresh mint Upper Right Plate 69 strip of ten, initial printing order number "174" defaced by hand-punching, new number "236" at left, quite well centered with amazing colour, LH in selvage only, stamps NH, VF+ (Unitrade cat. \$1,200) **Est. 300.00+**



- 543 ★ **106 shade, 1914 2c Carmine** Upper Right Plate 70 block of twenty, printing order number "174" at left, displaying exceptional colour - a lovely pastel-like shade of carmine, nearly very fine centering. A gorgeous plate block, F-VF NH (Unitrade cat. \$1,400+) **Est. 500.00+**



- 544 ★ **106iv, 1914 2c Orange Red** Lower right mint Plate 74 strip of ten in the scarcer shade, portion of printing order number "242" at left, rich colour and well centered with five stamps NH. An attractive plate multiple with the elusive shade, VF (Unitrade cat. \$1,400) **Est. 350.00+**





545 ★ 106iv, 1915 2c Orange Red Matching upper left Plates 91 and 92 strips of ten with printing order number "348" at right, latter in a somewhat deeper shade and well centered, former with minor perf separation in the selvage and reasonably centered. Both strips with penciled "29 Sept. 16" date of acquisition, LH in selvage leaving all stamps NH; a very scarce duo, F-VF (Unitrade cat. \$3,270) Est. 750.00+



546 ★ 106 shades, 1916 2c Carmine A quartet of plate strips of ten with consecutive plate numbers – UL Plate 104, 105 & 106 and UR Plate 107. Two shades shown; Plate 104 well centered with eight NH, others hinged in selvage leaving stamps NH, Plate 106 has perf separation strengthened by a hinge, F-VF; first three with pencil date of acquisition. (Unitrade cat. \$2,710) Est. 600.00+





- 547 ★ **106, 1916 2c Carmine** A well centered mint lower right Plate 112 strip of ten, rich colour with large margins, other eight stamps NH; penciled "Apl 28 / 18" date of acquisition, VF LH (Unitrade cat. \$1,040) **Est. 250.00+**



- 548 ★ **106, 1918-1919 2c Carmine** A brilliant fresh quartet of consecutive plate numbered strips of ten: UL Plate 123 VF, UR Plate 124 VF (tiny surface scuff on one), 125 and 126 F-VF. First three LH or small hinge in selvedge leaving all stamps NH, Plate 126 with eight NH. Three plates show penciled date of acquisition, F-VF to VF (Unitrade cat. \$3,710) **Est. 750.00+**



- 549 ★ **106, 1919 2c Carmine** Well centered and fresh upper right Plate 129 strip of ten, natural diagonal bends on one stamp, LH in selvedge only, stamps VF NH (Unitrade cat. \$1,200) **Est. 250.00+**





- 550 ★ **106 + shade, 1919 2c Carmine** An attractive quartet of consecutive plate numbered strips of ten: UR Plate 130, UL Plates 131, 132 and 133. First plate with eight NH; next three strips LH in selvedge only. Two shades observed, Plate 132 in an unusual brighter shade; all strips noticeably well centered, each with penciled date of acquisition, VF (Unitrade cat. \$4,640) **Est. 1,000.00+**



- 551 ★ **106iii, 1920 2c Dark Carmine** An exceptionally well centered, post office upper left Plate 149 strip of ten, LH in margin only, stamps NH. A beautiful plate strip, XF (Unitrade cat. \$1,200+) **Est. 400.00+**



- 552 ★ **106iii, 1920 2c Dark Carmine** Choice, well centered mint UL Plate 150 & UR Plate 151 strips of ten, exceptional fresh colour, LH in selvedge leaving all stamps NH; both with penciled date of acquisition. An attractive duo, VF+ (Unitrade cat. \$2,400) **Est. 600.00+**





- 553 ★ 107vi, 1922-1923 2c Yellow Green (Wet Printing) A very rare "R-GAUGE" pair, natural straight edge at top with portion of guide arrow in the margin, deep rich colour; only a few "R-GAUGE" imprints are known on the 2 cent stamp (no blocks exist), Fine LH (Unitrade cat. is for a pair) **1,500.00**

Provenance: Robert Bayes (private treaty, circa. 1996), Item 123



- 554 ★ 107, 107ii, 1921 2c Yellow Green & Green (Wet Printing) Four plate strips of ten with consecutive numbers: UR Plate 163, VF, UL Plate 164, F-VF, UR Plates 165 & 166 VF; first two plates in green shade, last two in a distinctive bright yellow green shade. All four strips LH in selvage and on straight edged stamp, Plate 164 with pos. 1 LH as well. A beautiful group, VF; each with penciled date of acquisition. (Unitrade cat. \$4,940) **Est. 1,000.00+**



- 555 ★ **107ii, 1922 2c Green (Wet Printing)** Matching pair of upper right Plates 171 & 172 strips of ten with post office rich colour, quite well centered, former with couple stamps with minor gum wrinkle, small marginal tear above stamp position 8; both strips with faint hinging on straight edged stamp leaving other nine NH, VF; each with same-day "Jan 28 / 23" date of acquisition. (Unitrade cat. \$2,800)  
**Est. 500.00+**



- 556 ★ **107, 1923 2c Bright Yellow Green (Wet Printing)** An unusually choice upper right Plate 179 strip of ten, vibrant colour on fresh paper, well centered, faint hinging on straight edged stamp leaving nine VF NH; with penciled "Oct 21 / 24" date of acquisition. (Unitrade cat. \$1,500)  
**Est. 400.00+**



- 557 ★ **107ii, 1924 2c Green (Wet Printing)** A nicely centered and fresh mint Plate 189 block of eight, seldom seen, VF NH (Unitrade cat. \$1,200)  
**Est. 300.00+**
- 558 ★ **107iv, 1925 2c Yellow Green (Dry Printing)** Matching pair of upper right Plates 202 & 203 strips of ten, brilliant fresh colour, well centered, former with light pencil numbers in selvedge, folded vertically along perfs at centre, both with straight edged stamp hinged leaving nine NH, VF; Plate 203 with penciled "July 10 / 26" date of acquisition. (Unitrade cat. \$1,680)

*Illustrated on Page 36 Est. 350.00+*





-558-



- 559 ★ 107iv, 1926 2c Yellow Green (Dry Printing) Post office fresh and choice, matching pair of upper right Plates 208 & 209 strips of ten, well centered, former with lightly etched "A.L." above "L.B.C.", both with trace of hinging on straight edged stamp leaving nine NH, penciled "Jan 4 / 27" date of acquisition, VF (Unitrade cat. \$1,680) **Est. 350.00+**



- 560 ★ 108b, 1918 3c Yellow Brown (Wet Printing) An exceptional mint block with fresh, bright colour, displaying complete, unusually full strength Type B lathework, **prominent doubling** (5mm wide) on left side, LH on top pair, otherwise NH; a great shade with the elusive double lathework variety, VF+ LH **1,000.00+**



- 561 ★ **108, 1919-1920 3c Brown (Wet Printing)** A very scarce mint single with superb, full strength impression of Type B INVERTED lathework, quite well centered within large margins, F-VF H (Unitrade cat. as fine) **2,500.00**

Provenance: The "Lindemann" Collection (private treaty, circa. 1997)



- 562 ★ **108, 1918 3c Brown (Wet Printing)** Upper Left Plate 11 block of twenty in a rich brown shade on fresh paper, hinged on straight edge stamps and in left margin, tiny gum thin on position 9, small crayon number top right, seventeen stamps are NH. Quite well centered and seldom seen early plate numbers, VF (Unitrade cat. \$2,700) **Est. 500.00+**



- 563 ★ **108, 108b, 1918 3c Yellow Brown & Brown (Wet Printing)** A matching trio of plate strips of ten: Plates 15, 16, 17 from the Upper Left pane position; third strip with penciled date of acquisition. Plate 15 & 16 strips in yellow brown shade, former VF and latter Fine+; Plate 17 strip in brown shade, VF. Each hinged in the margin and on straight edged stamp leaving nine NH. An attractive and very scarce group, F-VF (Unitrade cat. \$3,505) **Est. 750.00+**





- 564 ★ 108, 108b, 1918 3c Yellow Brown & Brown (Wet Printing)** An appealing and very scarce quartet of plate strips with consecutive plate numbers, three with penciled dates of acquisition: Plates 18 and 19, F-VF, Plates 20 and 21 VF. All LH in selvage or straight edge stamp, other nine stamps NH; Plate 18 from UL pane position and in brown shade, others from UR positions in yellow brown shade. F-VF (Unitrade cat. \$5,690) **Est. 1,000.00+**



- 565 ★ 108, 1919 3c Brown (Wet Printing)** A matching pair of plate strips of ten: Plates 60 & 61 from the Upper Right pane position; penciled "7 Feb 20" date of acquisition. Both with minor perf separation, LH in selvage only, former plate with small marginal tear at top and light vertical bend through fifth stamp, otherwise stamps are well centered and choice with pristine original gum, VF NH (Unitrade cat. \$3,000) **Est. 600.00+**





566 ★ 108, 1920 3c Brown (Wet Printing) A consecutive, matching trio of plate strips of ten: Plates 88, 89, 90 from the Upper Right pane position, first two with penciled "19 Nov 20" date of acquisition. Each with rich colour on fresh paper, minor perf separation, LH in selvedge only leaving all stamps NH, Fine+ (Unitrade cat. \$600+) **Est. 200.00+**



567 ★ 109, 1924 3c Carmine, Die I Consecutive, matching trio of plate blocks of twenty: Plates 137, 138, 139 from the Upper Right pane position; penciled dates of acquisition. Each strip with rich fresh colour, LH on one or two stamps, F-VF (Unitrade cat. \$3,160) **Est. 750.00+**





- 568 ★ **109c, 1925 3c Carmine, Die II** Two highly select, matching plate strips of the scarce die: Plates 162 and 163 Upper Left positions; penciled "20 Mch 26" date of acquisition. Both well centered with deep rich colour, penciled number at top left, all stamps NH. A rare duo of the plate numbered multiple of the scarcer die, VF LH (Unitrade cat. \$4,200) **Est. 1,000.00+**



569



570

- 569 ★ **110c, 1922 4c Golden Yellow (Wet Printing)** An exceptional mint block of four with superb centering, in the scarcer, sought-after shade and showing remarkably strong, complete Type D INVERTED lathework, full original gum with light hinge on top right stamp only, couple faint natural gum bends; a very difficult lathework block to find with such a superior impression of the lathework and in the elusive Golden Yellow shade, XF LH **2,000.00+**
- 570 ★ **110b, 1922 4c Olive Yellow (Wet Printing)** A superb corner margin mint block displaying Type D inverted (40% strength) lathework, amazing colour on fresh paper, superior centering, XF NH **1,500.00+**



571 ★ **110b, 1922 4c Olive Yellow (Wet Printing)** A remarkably fresh and choice Plate 3 block of twenty from the Upper Right pane position, nicely centered with amazing bright colour on fresh paper, hinged in right margin and on straight edged stamps, other eighteen stamps with full pristine original gum, rarely seen this nice, VF NH (Unitrade cat. \$5,600) **Est. 1,500.00+**

Provenance: C.M. Jephcott, Maresch Sale 241, June 1990; Lot 774

**VERY RARE PLATE 1 & 2 BLOCKS OF TWENTY  
IN VERY DISTINCTIVE, EARLY PRINTING SHADES**



572 ★ **111a, 1911 5c Indigo** A very rare mint Plate 1 block of twenty of this sought-after and elusive first printing, order "84" at right, centered left, diagonal crease touching last four stamps of second row, lower corner pairs hinged leaving sixteen NH. One of the toughest shades of the Admiral series to find in a large plate strip, extremely rare, Fine OG / NH (Unitrade cat. \$7,280) **Est. 2,000.00+**

Provenance: C.M. Jephcott, Maresch Sale 241, June 1990; Lot 786



573 ★ **111b, 1911 5c Grey Blue** A lovely mint upper Plate 1 block of twenty in a fabulous bright shade, printing order numbers "84" and "104" defaced by hand-punching, with new number "115" at left; gum wrinkle on one stamp, lower left and right stamps hinged leaving eighteen NH, in a remarkable state of preservation for such an early plate of this key Admiral stamp, F-VF (Unitrade cat. \$13,100) **Est. 3,000.00+**

Provenance: C.M. Jephcott, Maresch Sale 241, June 1990; Lot 788





- 574 ★ 111, 1916 5c Blue A nice mint Lower Left Plate 11 strip of ten, quite well centered, brilliant colour on fresh paper, light vertical crease on fifth stamp, end stamps hinged leaving eight NH; large plate multiples on the Five cent blue are very seldom encountered, F-VF (Unitrade cat. \$4,530)  
Est. 1,000.00+



- 575 ★ 111, 1917 5c Blue Scarce mint Plate 13 block of eight originating from upper right pane, natural straight edge at left, bright colour on fresh paper, LH in selvage only, leaving all stamps with pristine original gum NH, Fine+ (Unitrade cat. \$1,120)  
Est. 500.00+



## CANADIAN PHILATELY FROM ANOTHER POINT OF VIEW

### JOIN THE CANADIAN PHILATELIC SOCIETY OF GREAT BRITAIN

Founded over 70 years ago to promote and study all aspects of philately in British North America (Canada and its Provinces), the Society offers its members:-

- A quarterly award-winning full colour magazine
- Auctions each year with many hundreds of lots
- An extensive library of published books and articles
- Website based exchange packet
- Subscriptions payable in local currency

For more information or membership details visit our website at [www.canadianpsgb.org.uk](http://www.canadianpsgb.org.uk) or contact our Secretary, John Watson at Lyngarth, 106 Huddersfield Road, Penistone, South Yorkshire S36 7BX or by email at [john.watson1949@btinternet.com](mailto:john.watson1949@btinternet.com)

Our 2023 Convention will be held in Barnsley, Yorkshire from 20th to 24th September.

[www.canadianpsgb.org.uk](http://www.canadianpsgb.org.uk)

**LEFT MARGIN R-GAUGE IMPRINT BLOCKS  
TWO DIFFERENT PRINTINGS OF THE FIVE CENT VIOLET**



- 576 ★ **112vi, 1924 5c Violet on Medium Wove Paper (Wet Printing)** A superb fresh mint block of six showing "R-GAUGE" imprint reading up in left margin, very well centered for this, brilliant fresh colour and full pristine original gum. A wonderful block in superior condition, VF+ NH **3,600.00+**

Provenance: The "Lindemann" Collection (private treaty, circa. 1997)

Several different denominations (from many different plates) exist with an "R-GAUGE" imprint. However, only the Five cent violet shows it on the left margin - reading up - found only on Plate 22, both on regular and thin papers. All other "R-GAUGE" imprints show in the right margin and read down.



- 577 ★ **112a, vi, 1924 5c Violet on Thin Paper (Wet Printing)** A very scarce block showing "R-GAUGE" imprint reading up in left margin, from Plate 22, a few split perfs at foot strengthened by a small hinge, fresh and very seldom seen, F-VF LH **900.00+**





- 578 ★ **112ii, 1921 5c Rose Violet (Wet Printing)** An appealing mint Upper Left Plate 15 strip of ten, penciled "5 Dec '22" date of acquisition, distinctive colour and the first plate used in the newly adopted colour, well centered, post office fresh colour, LH in margin leaving stamps NH, VF (Unitrade cat. \$1,800)  
**Est. 500.00+**



- 579 ★ **112ii, 1922 5c Rose Violet (Wet Printing)** A post office fresh mint Plate 17 block of twenty from the Upper Left pane position, one of the scarcest plate numbers on the 5 cent violet. Exceptional colour, hinged in left margin and on straight edged stamps, other eighteen stamps with immaculate original gum, F-VF NH (Unitrade cat. \$2,060)  
**Est. 500.00+**



- 580 ★ **112a, 1924 5c Violet on Thin Paper (Wet Printing)** A brilliant fresh mint Plate 22 block of twenty from the Upper Right pane position, well centered, on the distinctive vertical mesh thin wove paper, trivial marginal perf separation top right, folded along perfs between sixth and seventh columns, a beautiful and very seldom seen intact plate strip, VF NH (Unitrade cat. \$3,000)  
**Est. 750.00+**
- 581 ★ **113b shade, 1912 7c Deep Straw** A remarkable Plate 1 block of twelve with initial printing order number "85" defaced by hand-punching and new number "120" at right, amazing colour both quite distinctive and unusual for this stamp, with some similarities to the sage green shade; a few split perfs in margin, all twelve stamps NEVER HINGED. A beautiful and very scarce plate block ideal for the shade enthusiast, F-VF (Unitrade cat. \$10,200)  
*Illustrated on Page 45 Est. 2,000.00+*

Provenance: C.M. Jephcott, Maresch Sale 241, June 1990; Lot 818

The "Lindemann" Collection (private treaty, circa. 1997)





581



582 ★ 113b, 1912 7c Straw An impressive Upper Left mint Plate 2 block of twenty, printing order number "85" at right, the distinctive early shade, hint of oxidation, natural diagonal gum bend, a very rare Straw shade plate multiple, faint trace of hinging in ungummed portion of selvage leaving all stamps NEVER HINGED. One of the key shades of the Admiral series, Fine+ (Unitrade cat. \$6,000+) Est. 2,000.00+



583 ★ 113 shade, 1918 7c Deep Yellow Ochre A remarkably well centered Plate 5 block of twenty from the Upper Left pane position; nice deep colour and superior centering; uneven gum from natural pre-print fold in eighth column, hinged in selvage and on straight edge stamps, other sixteen NH, VF (Unitrade cat. \$4,680 as cheapest shade) Est. 1,000.00+

Provenance: C.M. Jephcott, Maresch Sale 241, June 1990; Lot 827





- 584 ★ 114b, 1924 7c Red Brown (Wet Printing)** Upper Left Plate 8 block of twenty with deep rich colour, reasonably centered, LH in selvedge and on one straight edge stamp leaving other nineteen NH, F-VF (Unitrade cat. \$1,595+ as normal stamps) **Est. 400.00+**

The Diagonal Line in "N" of "CENTS" variety appears on Positions 8, 16 & 20.

- 585 ★ 115, 1925 8c Blue** Upper Left Plate 1 block of twenty, characteristic etched "H" above "L.B.C." and small dot found on this particular position, some perf separation in selvedge, post office fresh, hinged on straight edge stamps and in left margin leaving eighteen NH, Fine+ and scarce (Unitrade cat. \$760+) *Illustrated on Website* **Est. 200.00+**



- 586 ★ 116a, 1911-1912 10c Reddish Purple** A marvelous Upper Right Plate 2 block of twenty, initial printing order numbers "86" and "119" defaced by hand-punching and new number "129" punched at left. Minute gum thin on lower right stamp, natural inclusion on top left stamp, severed and hinged supported between second and third columns. A rare large plate multiple of this key Admiral stamp showing the distinctive shade of the early printing (Plates 1 and 2 were simultaneously issued), hinged in selvedge and on six stamps leaving fourteen NEVER HINGED, Fine+ (Unitrade cat. \$6,150) **Est. 1,500.00+**

Provenance: C.M. Jephcott, Maresch Sale 241, June 1990; Lot 853



- 587 ★ 116, 1917-1918 10c Plum** A consecutive trio of plate imprint pairs: Plates 8 and 9 F-VF and Plate 10 Fine; each hinged once in the selvedge leaving all stamps NH, Fine to F-VF and a very scarce group. (Unitrade cat. \$3,360) **Est. 750.00+**



- 588 ★ 117, 1921-1922 10c Blue (Wet Printing) A brilliant fresh mint block showing well-above average Type D lathework - greater than 80% strength, hinged on top pair, otherwise NH; difficult to obtain with such nice lathework, Fine+ (Unitrade cat. as two lathework singles) **Est. 2,000.00**



- 589 ★ 117, 1921 10c Blue (Wet Printing) An unusually choice Plate 14 block of twenty with fabulous colour, well centered, LH in left margin and on straight edged stamps leaving eighteen NH; a most attractive, early intact plate strip of the Ten cent blue, rare and VF (Unitrade cat. \$5,040) **Est. 1,250.00+**

Provenance: C.M. Jephcott, Maresch Sale 241, June 1990; Lot 865



- 590 ★ 117ii, 1922 10c Light Blue (Wet Printing) A fresh Plate 18 block of ten with full plate inscription, bright shade on fresh paper, LH in selvedge only, stamps NH. A very scarce plate block; according to the Glen Lundeen plate census on the BNAPS website, only one other Plate 18 multiple (a block of eight) has been recorded, F-VF (Unitrade cat. \$1,650) **Est. 400.00+**





**THE SOUGHT-AFTER TEN BISTRE BROWN LATHEWORK  
VERY SCARCE IN A BLOCK AND ESPECIALLY DESIRABLE  
WITH KEY LATHEWORK PAIR IN NEVER HINGED CONDITION**



- 591 ★ 118, 1924 10c Bistre Brown** A rare mint corner margin block displaying sharp, centered high resulting in full strength Type D lathework, some perf separation in margin at foot, brilliant fresh colour, faint trace of hinging on top pair, otherwise NEVER HINGED. A mere eight Ten cent bistre brown lathework blocks are recorded and as far as we know, none exists with all stamps NH. One of the key lathework items of the Admiral issue, Fine (Unitrade cat. \$10,000 as two fine NH singles)

**Est. 2,500.00+**



- 592 ★ 118, 1925 10c Bistre Brown** Upper Left Plate 25 block of twenty with rich colour, reasonably centered, LH in left margin and upper right stamp leaving nineteen NH, attractive and F-VF (Unitrade cat. \$2,225)

**Est. 500.00+**

Provenance: C.M. Jephcott, Maresch Sale 241, June 1990; Lot 888



593



594

- 593 ★ **119c, 1917 20c Dark Olive Green (Wet Printing)** A post office fresh mint block with superb, full strength Type A lathework, printing order number "935F" **clearly shows under the lathework** below right stamp; a lovely block with immaculate original gum; lower pair well centered with unusually large margins, F-VF NH (Unitrade cat. as two singles) **2,100.00**
- 594 ★ **119c, 1917 20c Dark Olive Green (Wet Printing)** A fresh, well centered mint plate A4 block, natural straight edge and part guide arrow at left, full strength Type A lathework at right, top pair LH, otherwise NH, scarce, VF (Unitrade cat. as normal lathework block) **1,800.00**

**TWENTY CENT EARLY PRINTING GREY GREEN SHADE  
THE LARGEST PLATE MULTIPLE, A MAJOR RARITY  
NOT OFFERED SINCE THE FAMOUS JEPHCOTT SALE**



- 595 ★ **119d, 1912 20c Greyish Green (Wet Printing)** An outstanding early printing mint Plate 1 block of twenty, showing initial printing order numbers "87" and "101" defaced by hand-punching, replaced with "117" at right, remarkably well centered for such a large multiple, thirteen stamps **NEVER HINGED**. A spectacular Admiral plate block of this key stamp, **by far the largest recorded plate multiple of this elusive shade**, VF (Unitrade 119d; cat. \$17,700) **Est. 5,000.00+**

Provenance: Clare M. Jephcott, Maresch Sale 241, June 1990; Lot 896





FIFTY CENT ADMIRAL  
ONE OF THE MOST SOUGHT-AFTER LATHEWORKS  
OF ALL DENOMINATIONS



- 596 ★ 120ii, 1923 50c Brown Black (Wet Printing) An important mint block in the characteristic shade and impression associated with Plate 3, displaying noticeably above average strength Type D lathework, quite well centered, hinged on top pair, faint gum disturbance on left pair, lower right lathework single with full pristine NH gum. Lathework on the fifty cent Admiral ranks among the most difficult to obtain, Fine+ (Unitrade cat. as fine hinged block) **7,500.00**

Provenance: Robert Chaplin, Maresch Sale 223, January 1989; Lot 811



- 597 ★ 120a, 1912 50c Black (Wet Printing) A rare Plate 1 strip of four with printing order number "88" at right, small flaw at lower right, both end stamps and top sheet margin supported by hinges, centre pair with pristine original gum, never hinged; attractive and one of the very few Plate 1 multiples known to exist, Fine (Unitrade cat. \$1,280) **Est. 300.00+**



- 598 ★ 120ii, 1923 50c Brown Black (Wet Printing) A superb mint Plate 3 block with full imprint, beautifully centered with gorgeous fresh colour, hinged just touching top pair, lower pair with full pristine original gum NEVER HINGED. Very rare plate numbered multiple - the only reported Plate 3 multiple larger than a plate imprint pair, VF (Unitrade cat. \$2,800) **Est. 1,500.00+**



599



600

- 599 ★ 122v, 1925 \$1 Orange (Dry Printing) A mint block with "R-GAUGE" imprint in right margin, bright colour on fresh paper, full original gum, lightly hinged at top right only. An elusive imprint multiple, **1,000.00+**

Provenance: Harry Lussey, Maresch Sale 133, June 1981; Lot 1133

The "Lindemann" Collection (private treaty, circa. 1997)

- 600 ◎ 122b, v, 1923 \$1 Deep Orange (Wet Printing) Top right marginal block with "R-GAUGE" imprint, distinctive deep rich colour of the scarcer wet printing, Kingston, Ont "3" roller cancellation. A very scarce used block, although Unitrade does not make a distinction in value from wet or dry printings, we believe wet printing is scarcer, Fine **600.00+**



AN EXCEPTIONAL SET OF THREE  
PART-PERFORATE GUTTER MARGIN BLOCKS OF TWELVE



**THE UNIQUE POSITIONAL BLOCKS  
WITH RIGHT MARGIN GUIDE ARROWS**



- 601 ★ 126ii, 128ii, 130ii, 1924 1c, 2c & 3c Admiral (Wet Printing), Part Perforate Coils, Perf 8 Vertically**  
 The magnificent, UNIQUE right margin interpanneau gutter margin blocks of twelve. Guide arrows indicate where sheets were to be guillotined. Quite well centered in characteristic deep colours, intact perforations; 3c with natural gum wrinkles. Three to four stamps in each from top and bottom rows lightly hinged leaving the key gutter blocks of eight NEVER HINGED. A truly remarkable set that seldom appears in the marketplace, in fact this set was last offered over 30 years ago. One of only five known sets, this set being one-of-a-kind with the right margins and guide arrows, VF **67,000.00**

Provenance: Frederick T. Norris Collection, Sissons Sale 52, September 1950; Lot 425-427

Clare M. Jephcott, Maresch Sale 241, June 1990; Lot 961





- 602 ★ 126c, 1924 1c Yellow, Die I (Wet Printing), Part Perforate Coil A visually striking, well centered block imperforate horizontally, deep colour and full perforations, showing almost full strength Type B lathework, neatly postmarked with Montreal MY 9 27 "B" duplex; very scarce, VF+ 1,440.00+

AN EXCEPTIONALLY WELL CENTERED AND CHOICE  
R-GAUGE IMPRINT ON THE ELUSIVE PART-PERFORATE BLOCK



- 603 ★ 130aii, 1924 3c Dark Carmine, Die I (Wet Printing), Part Perforate Coil An impressive positional mint block, imperforate horizontally, with superior centering and showing complete lettering of the very scarce "R-GAUGE" imprint in right margin, hinged on top pair, in an excellent state of preservation, well-above average condition compared to "R-GAUGE" blocks we have seen over the years, XF 4,500.00+

Due to the naturally narrow sheet margin on the part perforate 3c carmine, the lettering on most known "R-GAUGE" imprint blocks is noticeably trimmed and incomplete as a result. This example displays complete lettering.



- 604 ★ 136, 1924 1c Yellow, Die I (Wet Printing), Imperforate A stunning mint interpanneau block of six (3x2) "straddling" the UL and UR panes, showing the complete guide arrow above top right pair - presumably from Plate 179 as it shows the additional horizontal guideline through the arrow. A very rare interpanneau multiple ideal for the specialist, VF NH **Est. 1,000.00+**

Provenance: Abe Charkow, Eastern Auctions, August 1995; Lot 756



- 605 ★ 136, 1924 1c Yellow, Die I (Wet Printing), Imperforate A fresh mint Plate 180 block of twelve, VF NH (Unitrade cat. \$1,400) **Est. 400.00+**



- 606 ★ 137, 1924 2c Deep Green (Wet Printing) Brilliant fresh Upper Right Plate 189 block of twenty, in immaculate condition with pristine original gum, XF NH (Unitrade cat. \$2,200) **Est. 750.00+**





Lot 607 (90% actual size)

THE RARE IMPERFORATE PLATE 130 – NOT REGULARLY ISSUED  
FEWER THAN A DOZEN KNOWN



- 607 ★ 138, 1924 3c Carmine, Die I (Dry Printing), Imperforate The rare Plate 130 - not regularly issued; an impressive mint Upper Left plate strip of twenty with clear, full imprint, characteristic band of colour along top edge and faint guidelines in left sheet margin, inconsequential scissor separation between lower right corner pair clear of design, a mere eleven strips of four or larger units have been reported, three of which are plate strips of twenty (the other two from UR pane), VF NH (Unitrade cat. \$6,000+ as NH plate 130 block of eight) **Est. 5,000.00+**

Provenance: Robert A. Chaplin, Maresch Sale 223, January 1989; Lot 862

SE-TENANT WITH AND WITHOUT SURCHARGE R-GAUGE BLOCK  
A MAJOR RARITY OF THE ADMIRAL SURCHARGE



- 608 ★ 139a + R-GAUGE imprint, 1926 2c on 3c Carmine, Die I, One-Line Surcharge An outstanding corner margin mint block of six showing "R-GAUGE" imprint in right margin, surcharge dramatically misplaced resulting in se-tenant pairs with and without surcharge, overall slightly sweated original gum, lightly hinged; a Fine and exceedingly rare imprint block showing a visually striking surcharge variety. **Est. 1,500.00+**

Provenance: Ed Richardson, Maresch Sale 101, April 1978; Lot 325

Unknown provenance, Maresch Sale 250, December 1990; Lot 1085

The "Lindemann" Collectio (private treaty, circa. 1997)





**AN EXCEEDINGLY RARE PLATE BLOCK OF THE SCARCER DIE  
ONE OF THE HIGHLIGHTS OF THE COLLECTION  
RESURFACING ON THE MARKET AFTER MORE THAN 30 YEARS**



- 609 ★ 139c, 1926 2c on 3c Carmine, Die II, One-Line Surcharge** The UNIQUE mint "Jephcott" Plate 162 block of eight of the much scarcer Die II, exceptionally fresh, faint wrinkle on top left stamp, lightly hinge in selvage only leaving all stamps NEVER HINGED. Only one other Die II block is known; a Plate 163 block of six with incomplete imprint used on a first day cover. Thus, making this block the more important and highly coveted among all Admiral plate multiples, Fine+. **Est. 7,500.00+**

Provenance: C.M. Jephcott, Maresch Sale 241, June 1990; Lot 1007

Its great rarity is reflected in Unitrade specialized catalogue, which lists the 139c Die II plate block. It is currently unpriced mint, however, it is valued at \$12,500 for the used block of six.



- 610 ★ 139, 1926 2c on 3c Carmine, Die I, One-Line Surcharge Post office fresh Plate 117 block of twenty from upper left pane, a scarce intact plate block, Fine+ NH (Untrade cat. \$1,590) Est. 350.00+



- 611 ★ 140, 1926 2c on 3c Carmine, Die I, Two-Line Surcharge A fresh Plate 116 block of twenty from upper right pane, reasonably centered with full original gum, F-VF NH and scarce (Untrade cat. \$1,485) Est. 350.00+

**YOU ARE INVITED TO JOIN  
THE BRITISH NORTH AMERICA PHILATELIC SOCIETY**

*BNA Topics, quarterly journal*

Benefits include annual convention and exhibition, more than 20 specialized study groups, regional groups in many cities in Canada and the United States, online sales circuits, the Horace Harrison online library and a generous discount on BNAPS book purchases.

Contact: **P. Charles Livermore, Secretary**  
288 Cook Rd  
East Aurora, NY 14052 USA  
email: [secretary@bnaps.org](mailto:secretary@bnaps.org)  
phone: 917 863 9011  
website: <http://www.bnaps.org>

**BNAPS** – *The Society for Canadian Philately*





A GLORIOUS SET OF ADMIRAL IMPERFORATE  
TÊTE-BÊCHE BOOKLET PANES



**ONE OF THE KEY SETS OF THE ENTIRE ADMIRAL SERIES  
AND THE RAREST IMPERFORATES IN ALL OF CANADIAN PHILATELY**



- 612 ★ 105c, 107d, 109b, 1920s 1c, 2c & 3c Admiral** A fabulous set of imperforate tête-bêche booklet panes - the One cent yellow Die I and Two cent green in two panes of six and the Three cent carmine Die I in two panes of four. BY FAR THE RAREST SUCH IMPERFORATES OF CANADA AS ONLY SEVEN SETS EXIST.

The One cent and Three cent panes are without gum as are all known booklet panes, large margined and in an excellent state of preservation. The Two cent possesses full original gum, hinged, with a couple minor gum thins and slight gum disturbance; it is however superior to other existing panes which have noticeable faults such as gum problems and creases; VF **67,500.00**

Only seven sets exist. Thanks to Leopold Beaudet's latest census (published in Admiral's Log, Vol. XIII, No. 1, Dec. 2013) we are able to give a concise summary. "**SET (number)**" in bold designate that we have seen the actual item or a clear illustration.

**SET 1** - ex. Norris (1950; 1c, 3c panes), Jephcott (1990; 2c pane was added to complete the set)

**SET 2** - ex. Unknown provenance, Maresch Sale 182, October 1985; Lot 920, John Tomlinson Collection (1992), The Baron Collections, Eastern Auctions (2016)

**SET 3** - ex. Lewis Reford (ca. 1944 privately sold to Richardson), Ed Richardson (1978), The Athena Collections, Part 2 (2023)

**SET 4** - ex. H.R. Harmer (1966 private treaty), Stan Lum (2013)

**SET 5** - ex. Dale-Lichtenstein (1954), Alfred Cook (1989), "Midland" (1996), Brigham (2015)

**SET 6 - the set offered here;** Dr. Leon van Straten (1965), The "Lindemann" Collection (private treaty, circa. 1997)

**SET 7** - Private Sale (2013) stated as being ex. Bass - we have not seen images of this set

It is interesting to note that several prominent Admiral collectors such as Harry Lussey, George Marler and Abe Charkow among others, were never able to secure a set for their collections.

A VERY RARE AND HIGHLY DESIRABLE SET OF TETE-BECHE ADMIRAL BOOKLET PANES. SELDOM OFFERED AND ONE OF THE HIGHLIGHTS OF THIS COLLECTION.



A VERY RARE DUO OF PLATE 15 & PLATE 16 “OTTAWA TOP”  
MARGINAL IMPRINT BOOKLET PANES



Lot 615 (150% actual size)



Lot 616 (150% actual size)



613



614

- 613 ★ **104aiv shade, 1915 1c Bluish Green on Horizontal Wove Paper** A squat printing mint booklet pane in a beautiful and unusual shade, with distinctive horizontal mesh and shorter stamps, brilliant fresh colour with full original gum; an elusive pane, VF NH **400.00**
- 614 ★ **106aiii, 1912 2c Deep Rose Red** A superb mint booklet pane of six of the elusive "Squat Printing" on distinctive horizontal mesh wove paper, dried OG in tab margin from the glassine interleave leaving stamps with full original gum, XF NH; the best centering one can hope to find on this scarce early booklet pane (Unitrade cat. as hinged only) **350.00+**



615



616

- 615 ★ **106aiv – Plate 15, 1914 2c Carmine on Vertical Wove Paper** A rare mint booklet pane of six from Plate 15 showing normally seen portion of "OTTAWA TOP" imprint (reading up) in tab at left, natural diagonal gum crease and hint of yellowing at left, showing superior centering unlike most existing panes, a couple split perfs at top right. About a dozen OTTAWA TOP imprint panes from Plate 15 have been reported; this is one of the best centered panes available, VF LH *Illustrated on Page 62* **6,500.00**
- Provenance: Alfred Cook Collection of Admiral Booklets, Sissons Sale 496, November 1989; Lot 313  
The "Lindemann" Collection (private treaty, circa. 1997)
- 616 ★ **106aiv – Plate 16, 1914 2c Carmine on Vertical Wove Paper** An extremely rare mint booklet pane of six from Plate 16 showing partial (as normally seen) "OTTAWA TOP" imprint reading up in tab at left, different than Plate 15 as imprint is positioned noticeably lower than the one found on OTTAWA TOP imprint from Plate 15; centered high, bright colour with full original gum, NEVER HINGED. One of the great rarities of Admiral booklet panes, Fine NH *Illustrated on Page 62* **6,750.00+**

Provenance: Robert Bayes (private treaty, 1996), Item 116

Unitrade does not list separate retail prices for Plates 15 and Plate 16. Plate 16 is noticeably rarer with a ratio of about 1 to 5. According to one expert, only three 2c carmine booklet pane with imprint of Plate 16 have been recorded.





WAR TAX



- 617 ★ **MR1, 1915 1c Green War Tax A** selected, well centered and fresh Upper Right Plate 6 strip of ten with initial printing order number "295" defaced by hand-punching, new number (3)10 punched at left; penciled "July 2 '15" date of acquisition, hinged in margin only leaving all stamps VF NH (Unitrade cat. \$1,200) **Est. 250.00+**



- 618 ★ **MR1, 1915 1c Green War Tax A** bright fresh, well centered Upper Left Plate 7 block of twenty, printing order number "295" at right, marginal scissor cut along perforation above position 7, light natural gum creasing on two, hinged at end columns leaving sixteen stamps VF NH (Unitrade cat. \$2,080) **Est. 350.00+**



- 619 ★ **MR1, 1915 1c Green War Tax** Upper Right Plate 8 block of twenty, printing order number "295" at right, hinged on end columns leaving sixteen NH, F-VF and very scarce. (Unitrade cat. \$1,220) **Est. 300.00+**





- 620 ★ **MR1, 1915 1c Green War Tax** An impressive Upper Left Plate 9 block of twenty with printing order number "295" at right, quite well centered, hinged along first and last columns leaving sixteen NH. One of the rarest plate multiples of this stamp - **this is the only Plate 9 multiple of any size recorded, VF** (Unitrade cat. \$2,080+) **Est. 500.00+**



- 621 ★ **MR2a, 1915 2c Rose Carmine War Tax** Lower Right Plate 1 block of twenty, printing order number "296" at right, in a distinctive beautiful shade, hinged on end columns leaving sixteen NH. An attractive multiple from the first issued plate, F-VF (Unitrade cat. \$1,776) **Est. 400.00+**

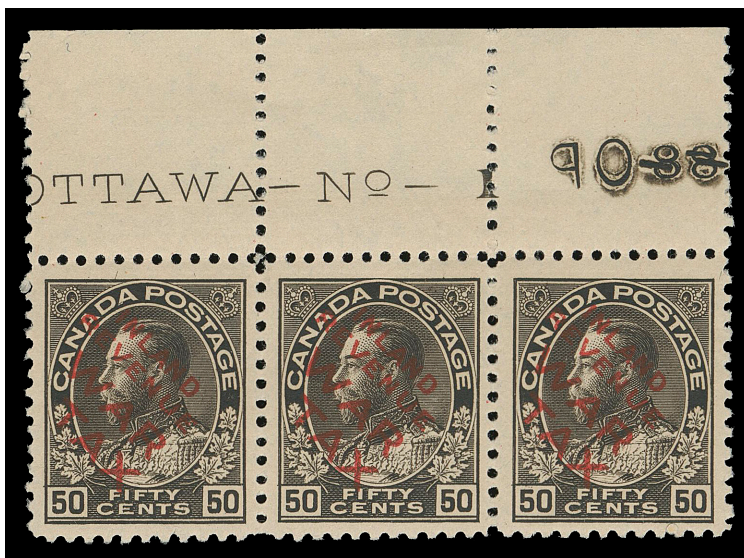


- 622 ★ **MR2D, 1915 50c Black with WAR TAX Overprint in Red** A mint corner margin Plate 1 block of ten showing portion of plate 1 imprint and printing order number "88" defaced by hand-punching with new number "193" at right; light creasing in margin only resulting from a pre-perforation paper fold at top right; light red ink and pencil numbers in margin, faint trace of hinging on top left pair, other eight stamps NEVER HINGED. A rarely seen plate block and one of the largest surviving plate multiples, F-VF VLH / NH (Unitrade cat. \$3,950) **Est. 1,500.00+**





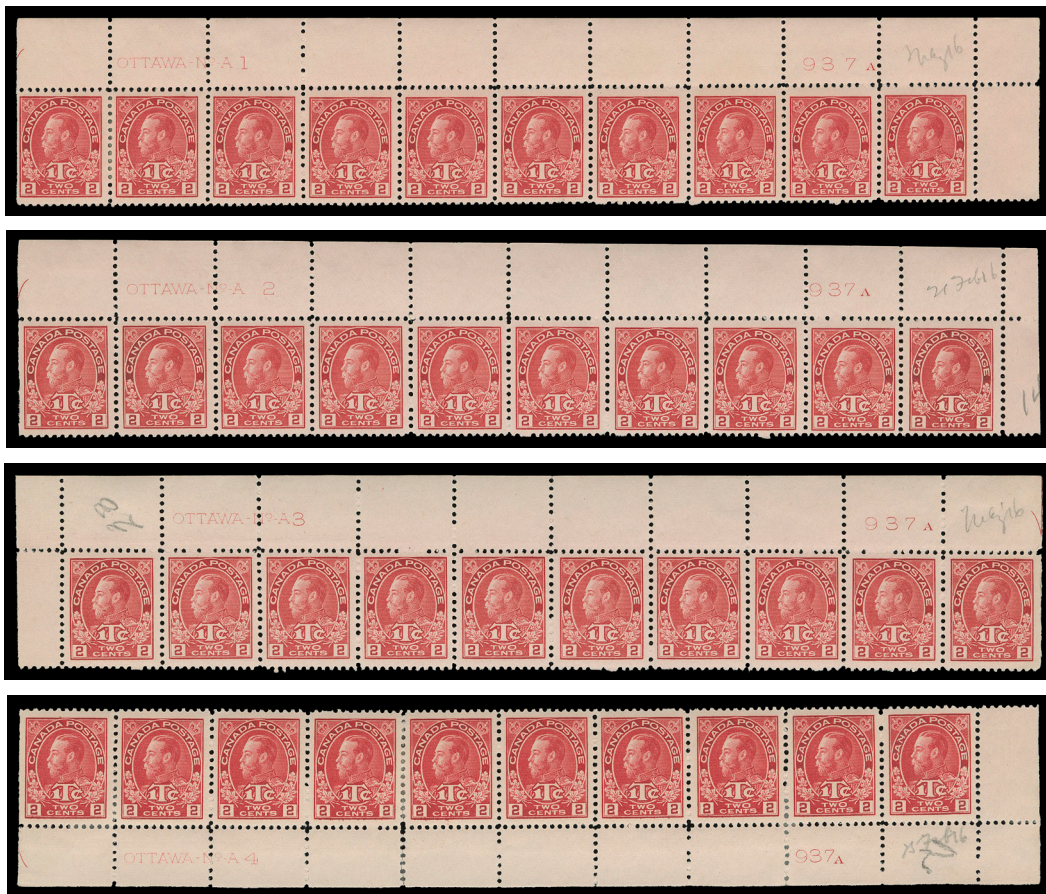
**THE FIFTY CENT INLAND WAR TAX  
A SUPERB MINT NEVER HINGED PLATE MULTIPLE  
A WONDERFUL SHOWPIECE OF IMMENSE RARITY**



- 623 ★ **MR2Di, 1915 50c Black, Inland Revenue WAR TAX Overprint in Red** Extraordinary mint Plate 1 strip of three showing nearly complete imprint, initial printing order number "88" defaced by hand-punching at right, all three stamps remarkably well centered with amazing deep rich colour, faint hinging in un gummed portion of the margin, otherwise full original gum, NEVER HINGED. An extremely rare and highly desirable plate multiple of this key stamp in choice condition. One of the clear highlights among Lundeen collection of plate multiples, VF NH (Unitrade cat. \$6,000)

**Est. 2,500.00+**

THE ONLY KNOWN PLATE MULTIPLE OF ANY SIZE OF THE FIFTY CENT INLAND WAR TAX IN THE EXHAUSTIVE ADMIRAL PLATE CENSUS, COMPILED BY GLEN LUNDEEN.



- 624 ★ **MR3b, 1915-1916 2c+1c Rose Carmine, Die I War Tax A** a very scarce group of four plate strips of ten in this lovely bright shade: UR Plates 1 & 2, UL Plate 3 and LR Plate 4, each with pencil date of acquisition. All four are quite well centered; Plate 1 with left pair hinged, straight edge stamp with gum thin, eight NH; Plate 2 LH in selvedge, stamps NH; Plate 3 hinged in selvedge and straight edge stamp with nine NH; and Plate 4, hinged supported or LH on several, partly severed between fourth and fifth stamp, two NH. An appealing group, VF (Unitrade cat. \$7,350) **Est. 1,250.00+**



- 625 ★ **MR3, 1916 2c+1c Carmine, Die I War Tax Lower Right Plate 11** block of twenty with printing order number "937F" at right, quite well centered with the key block of four with imprint very well centered, sixth column with light vertical gum bend, hinged on three stamps at sides leaving seventeen NH, F-VF (Unitrade cat. \$1,895) **Est. 350.00+**



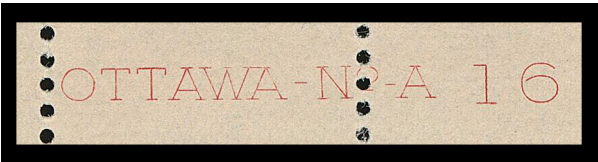


Lot 626 (100% actual size)

THE DIE II WAR TAX – A MAJOR PLATE MULTIPLE RARITY  
HIGHLY DESIRABLE IN SUCH SUPERIOR QUALITY



626 ★ **MR3a, 1916 2c+1c Deep Carmine, Die II War Tax** Upper Left mint Plate 16 block of twenty of the scarcer die in the distinctive deeper shade, vertical end pairs hinged, lightened pencil number in selvage, a few split perfs strengthened by hinge. Remarkably well centered for such a large multiple with sixteen stamps NEVER HINGED. A rare Die II plate block; only a few exist of (either Plate 15 or 16), this being the largest reported of Plate 16, VF OG / NH (Unitrade cat. \$20,800) Est. 7,500.00+



*detail of plate imprint*





**A VERY RARE AND STRIKING DUO  
OF PART PERFORATE PLATE 3 AND 4 BLOCKS**



- 627 ★ **MR4iv, 1916 2c+1c Dark Yellowish Brown, Die I War Tax** A corner margin plate 3 block of six imperforate horizontally with complete imprint, top centre stamp with wrinkle ending in a small tear in the margin, nevertheless a very rare part perforated plate block, well centered and ungummed as issued, VF; ex. *C.M. Jephcott (private sale circa. 1980s)* **Est. 2,000.00+**

The 2c+1c brown War Tax stamps from Plate 3 and 4 were never issued as regular perforated stamps. These part perforate stamps were prepared from sheets printed from plates designated for coil stamps.



- 628 ★ **MR4iv, 1916 2c+1c Dark Yellowish Brown, Die I War Tax** A corner margin plate 4 block of six imperforate horizontally with complete imprint, well centered and ungummed as issued, displays unusual double lines of perforations in the top margin; top centre stamp with wrinkle ending in a small tear in the margin. A very rare part-perforated plate block, VF; ex. *C.M. Jephcott (private sale circa. 1980s)* **Est. 2,000.00+**

WAR TAX IMPERFORATE AND PART PERFORATE PLATE 14 BLOCKS  
BOTH EMANATING FROM THE JEPHCOTT COLLECTION



- 629 ★ **MR4b, 1916 2c+1c Yellowish Brown, Die I War Tax A** very rare plate 14 imperforate block of eight showing full inscription and portion of guide arrow at top left, ungummed as issued, VF; ex. *C.M. Jephcott* (private sale, circa. 1980s) **Est. 2,000.00+**



- 630 ★ **MR4ii, 1916 2c+1c Dark Yellowish Brown, Die I War Tax A** corner plate 14 block of eight imperforate vertically with complete imprint, some creasing mostly confined to margins; typical centering, a very rare plate block, Fine; ex. *C.M. Jephcott* (private sale circa. 1980s) **Est. 2,000.00+**





## A SCARCE TRIO OF PLATE NUMBERED – LATHEWORK STRIPS



- 631 ★ **MR4, 1917 2c+1c Brown, Die II War Tax** A nicely centered lower right strip of ten in a lovely rich shade, "A40" imprint and printing order number "937P" below Position 91 and strong, full Type A lathework on others, **prominent DOUBLE lathework** (17mm wide) below Position 96, left stamp and margin at right LH, leaving all nine lathework stamps including they key double NH, VF (Unitrade cat. \$3,420) *Illustrated on Page 73 Est. 1,000.00+*



- 632 ★ **MR4, 1917 2c+1c Brown, Die II War Tax** A fresh, well centered, lower left strip of ten, "A41" imprint and printing order number "937P" below Position 100 and strong, full Type A lathework on others, **prominent double lathework** (12mm wide) below Position 97, end stamps hinged leaving eight lathework stamps including the key double NH, penciled "Aprl 17" date of acquisition in left sheet margin, VF (Unitrade cat. \$3,340) *Illustrated on Page 73 Est. 1,000.00+*



- 633 ★ **MR4, 1917 2c+1c Brown, Die II War Tax** A very well centered lower right strip of ten in a beautiful darker shade, "A42" imprint and printing order number "937P" below Position 91 and strong, full Type A lathework on others, showing **DOUBLE lathework** (5mm wide) below Position 98, lightly hinged on left-hand stamp and right margin leaving all nine lathework stamps including the key double NH, attractive, VF (Unitrade cat. \$3,420) *Illustrated on Page 73 Est. 1,000.00+*



633



632



631





Lot 634 (100% actual size)

THE HIGHLY COVETED WAR TAX PLATE BLOCK FROM THE ELUSIVE DIE I  
ONE OF THE MAJOR PLATE BLOCK RARITIES  
OF THE ENTIRE ADMIRAL SERIES



634 ★ **MR4a, 1915 2c+1c Deep Yellowish Brown, Die I War Tax** A spectacular and unique mint Plate 1 block of twenty from the lower left pane position, printing order number "937A" below Position 99. The sought-after and elusive die, attractive with nearly very fine centering, the two vertical end pairs hinged, small thin on Pos. 81, tiny stain spot on Pos. 87, light pencil number in selvage. A total of SIXTEEN STAMPS ARE NEVER HINGED. A very rare and desirable plate block, only three other plate multiples are recorded of Plate 1 - none larger than a strip of three, making this plate block of twenty very impressive indeed. One of the clear highlights of this pre-eminent Admiral collection, F-VF (Unitrade cat. \$46,200) **Est. 20,000.00+**

The ideal companion to the similar Die I plate block of twenty from Plate 2 offered in March 2023; Lot 633, where it realized \$50,000 hammer.

The Plate 2 offered in our recent March sale (Part 1) and this Plate 1 blocks of twenty are by far the largest recorded 2c+1c brown War Tax, Die I plate multiples, according to Glen Lundeen census.



*detail of plate imprint*





- 635 ★ **MR4, MR4i + shade, 1916 2c+1c Brown (shades), Die II War Tax** A nice group of six plate strips of ten with consecutive plate numbers, displaying three shades of brown, four with pencil date of acquisition: LR Plate 15 F-VF, UR Plate 16 F-VF, UL Plate 17 Fine, UL Plate 18 VF, UL Plate 19 VF, and LL Plate 20 VF. The last with disturbed gum and two with gum thin; the other five strips, hinged in selvage and on one or two stamps, A very scarce assembly, F-VF (Unitrade cat. \$4,085)

Est. 750.00+





- 636 ★ **MR4, 1917 2c+1c Dark Yellowish Brown, Die II War Tax Upper Right mint Plate 30** block of twenty, unusually well centered, deep rich colour, light pencil number in margin, end pairs very lightly hinged leaving sixteen NH, VF (Unitrade cat. \$2,080) **Est. 500.00+**



- 637 ★ **MR4, 1917 2c+1c Dark Brown, Die II War Tax Upper Left mint Plate 37** block of twenty, well centered with rich colour on bright white paper, light pencil number in margin, end pairs very lightly hinged leaving sixteen NH, VF (Unitrade cat. \$2,080) **Est. 500.00+**



- 638 ★ **MR4, 1917 2c+1c Dark Brown, Die II War Tax Upper Right mint Plate 43** strip of ten, well centered, rich colour, hinged in selvage only, stamps VF NH (Unitrade cat. \$1,200) **Est. 300.00+**

The "OTTAWA - No - A" imprint has been **re-entered** with clear doubling of all letters. Unusual.

END OF AUCTION  
THANK YOU



# THE PLACING OF A BID SHALL CONSTITUTE ACCEPTANCE OF THE CONDITIONS OF SALE

## BIDDING

1. The auction is conducted in Canadian dollars. All bids are per lot, as numbered in the catalogue. Eastern Auctions Ltd. reserves the right to withdraw any lot prior to sale, to divide a lot or to group two or more.
2. The highest bidder shall prevail at one advance over the next highest bid. Should a dispute arise between bidders, the decision of the auctioneer as to the successful bidder or the re-offering or resale of the lot in dispute shall rest entirely in the judgment of the auctioneer. **On all lots sold a commission of 18.5% on the hammer price will be payable by the buyer.** The auctioneer shall regulate the bidding and reserves the right to refuse any bid believed by him not to be made in good faith.

## SALES TAXES

3. Canadian residents will be charged GST or HST as appropriate for their mailing address.  
**U.S. and International residents are liable for GST (5%) on the buyer's premium only.**

## PAYMENT FOR PURCHASES

4. U.S. funds are acceptable only at the equivalent amount shown on the invoice. Visa, MasterCard and Paypal are accepted at a charge equal to 3.5% of the hammer amount. Please include the information on your bid sheet. We also accept personal cheques, bank wire, direct deposit, or e-Transfer at no extra cost.
5. Payment for lots, including those on which opinions are desired under Condition of Sale 8, shall be made as follows:  
A successful mail bidder will be notified of lots purchased and must remit before the lots are sent. A person known to us, or who furnishes satisfactory references, may at our option have purchases forwarded for immediate payment. Delivery will be to the address on the bid sheet. Proof by receipt of sending at the advised address shall constitute delivery. Postage and insurance are payable by the buyer.
6. Title shall not pass to the buyer until Eastern Auctions Ltd has received full payment.
7. Buyers agree to pay for lots as specified above and no credit is extended, a late payment charge of 2% per month is added to overdue payments, minimum \$5.00.

## QUALITY AND AUTHENTICITY

8. Each lot is sold as genuine and correctly described based on individual description as modified by any specific notations in this catalogue including (but not restricted to) "Key to Cataloguing".
  - (a) **QUALITY.** Any lot, description of which is incorrect, is returnable within forty-five days from closing date of auction. If the opinion of a mutually acceptable authority is desired, this period will be extended as noted in Condition 8. All disputed lots must be returned intact in the condition received. Photographed lots are not returnable on account of centering or perforations. Lots containing more than twenty stamps, described "as is", or described as having faults are not returnable for any reason. Bidders who have had an opportunity to examine the lots prior to the sale may not return the lots.
  - (b) **AUTHENTICITY.** Any lot, which is declared other than genuine by a mutually acceptable authority is returnable, provided the lot is received within a period of four weeks from the date of the auction. Proof that a "mutually acceptable authority" declines to express an opinion is not normally grounds for the return of a lot.
  - (c) Returns must be made by registered mail.
  - (d) Lots marked or encapsulated by an expert committee are not returnable for any reason.
  - (e) Lots accompanied by an existing certificate are not returnable.



## EXTENSION OF TIME

9. When an opinion from an acceptable authority is necessary the buyer must request an extension from Eastern Auctions Ltd. prior to the auction. The buyer must pay for the lot in full (a refund will be issued in the event of an unfavourable opinion). Eastern Auctions Ltd. will then submit the lot on the buyer's behalf to one of the following:

- Vincent Greene Foundation (Canada and BNA)
- Philatelic Foundation (USA)
- BPA or RPSL (British Commonwealth)
- Sergio Sismondo (World except USA)

## EXPENSES OF CERTIFICATION

10. Expenses shall be borne by the buyer except where the lot is other than as described and is returned within the conditions set forth above. Our responsibility is expressly limited to:

- (a) The actual cost of the opinion if up to \$50.00 or less, or
- (b) The cost of the opinion up to 5% of the sale price but not exceeding a maximum of \$100.00.
- (c) We are not responsible for expenses on the return of any lot.

This firm is a subscriber to the ASDA Code of Ethics for Auction firms.

## KEY TO CATALOGUING

### SYMBOLS & MAJOR ABBREVIATIONS

|     |              |     |                     |   |            |
|-----|--------------|-----|---------------------|---|------------|
| ★   | Mint         | ⊙   | Used                | E | Essay      |
| ☒   | Cover        | (/) | Incomplete Set      | F | Forgery    |
| (-) | Complete Set | R   | Reprint             | P | Proof      |
| ♦   | Graded Stamp | CDS | Circular Date Stamp | L | Literature |

## CONDITION

The various grading of stamps are in order; **Extremely Fine; Very Fine; Fine and Very Good.** In the case of sets, large blocks, sheets, etc., the condition quoted represents the average and quality above and below this standard can be expected. Minor perf separation can be expected on larger multiples.

**Mixed condition:** in large lots, a range of condition can be expected, from small faults to Very Fine.

## GUM

|          |  |
|----------|--|
| NH       | Never Hinged – with full original gum in Post Office state and unmounted.                          |
| LH       | Lightly Hinged – with full original gum showing some evidence of a previous hinge.                 |
| OG       | Original gum – showing some evidence of a previous hinge, a portion of which may still be present. |
| Part OG  | Part original gum.   |
| Unused   | Unused without original gum, or regummed.  |
| Ungummed | Without gum as issued.   |

## A NOTE ON HINGING

Bidders are reminded that, in accordance with industry standards, hinging is not described with respect to used stamps or stamps and proofs that were printed without gum. Hinging on these items is irrelevant to their condition and value. If hinging is important to you in such cases, please contact us before bidding and request further information. **We will not accept the return of used stamps or ungummed items due to hinging.**

Hinging on mint stamps is always disclosed, however, never hinged status should not be expected unless specifically stated “never hinged” or “NH”.



ESTIMATED VALUES

If an estimated cash value is given, it is shown in the description and always indicated by the abbreviation “Est.”. It is used where the lot is large or where the actual value has little relation to the catalogue price. **It represents the auctioneer’s appraisal of the true CASH value of a lot and the figure is invariably close to the actual realization.** It is useless for mail bidders to list any bids that are only a low proportion of such estimates.

CATALOGUES AND HANDBOOKS USED IN LISTING

- Unitrade Specialized (2023 Edition)
- George Marler, The Admiral Issue of Canada, 1982
- Minuse and Pratt, The Essays and Proofs of British North America, 1970
- Fred Jarrett, Stamps of British North America, Quarterman Publications, 1975

BIDDING INCREMENTS

The auctioneer may regulate the bidding at his discretion. However, to assist absentee bidders in establishing their maximum bid for each lot, the increments shown below will be used in most cases. We recommend that written bids conform to these increments (those which do not will be reduced to the previous level).

BIDDING IS CONDUCTED IN THE FOLLOWING INCREMENTS:

| Bidding         | Increments     | Bidding             | Increments        | Bidding               | Increments         |
|-----------------|----------------|---------------------|-------------------|-----------------------|--------------------|
| \$50 - \$100    | <b>\$5.00</b>  | \$1,600 - \$3,000   | <b>\$100.00</b>   | \$32,500 - \$75,000   | <b>\$2,500.00</b>  |
| \$110 - \$300   | <b>\$10.00</b> | \$3,250 - \$7,500   | <b>\$250.00</b>   | \$80,000 - \$150,000  | <b>\$5,000.00</b>  |
| \$325 - \$750   | <b>\$25.00</b> | \$8,000 - \$15,000  | <b>\$500.00</b>   | \$160,000 - \$300,000 | <b>\$10,000.00</b> |
| \$800 - \$1,500 | <b>\$50.00</b> | \$16,000 - \$30,000 | <b>\$1,000.00</b> | \$325,000 - OVER      | <b>\$25,000.00</b> |



To participate in our public auctions, we invite everyone to visit our website at [easternauctions.com/auctions](http://easternauctions.com/auctions). To create an account, complete the required fields, read and accept the terms and conditions, before clicking create account. Once completed, you will receive an approval email and you will need to follow the email instructions. For further help, contact us via email or by clicking the chat box located at the bottom left on your computer screen.

### TELEPHONE BIDS

Bids may be placed during office hours Monday to Friday from 8:00 AM to 5:00 PM Atlantic Standard Time by dialing 1 (506) 548-8986 or toll free in North America 1 (800) 667-8267. Bids may also be placed during the viewing sessions only. ***Please note all telephone bids must be confirmed by mail, email or fax.***

### FAXING OR E-MAILING YOUR BIDS

You can fax your bids 1 (506) 546-6627 or toll free in North America 1 (888) 867-8267.  
Email address: **[bids@easternauctions.com](mailto:bids@easternauctions.com)**

### BIDDING BY MAIL

If you wish to mail your bid sheet, please allow at least two weeks for delivery. We often receive mail bids after the auction closing. These bids are unfortunately nullified. Bidders are urged to phone in their bids and then mail in their confirmation.

### WEB SITE

You can view this auction on our website **[www.easternauctions.com](http://www.easternauctions.com)** under eastern@home. For your convenience, we have pictured almost every lot to facilitate your bidding. This will nicely compliment the catalogue due to constraints presented by a printed format.



## AUCTION AGENTS

*We are pleased to recommend the following agents:*

**Mr. J-Claude Michaud**

P.O Box 31248 • Halifax • Nova Scotia • B3K 5Y1 • Canada  
Tel: 1 (902) 443-5912 • Fax: 1 (902) 445-5795  
Cell: 1 (902) 456-0950  
Email: jcm.pha@gmail.com or jcm.ph@ns.sympatico.ca

**Mr. Nick Martin**

2 Field View • Ashton Road • Siddington • Cirencester  
Gloucestershire • GL7 6HB • United Kingdom  
Telephone 01285 653714  
Mobile: 07703 766477  
Email: nick@loveauctions.co.uk  
Website: www.loveauctions.co.uk

**Mr. Charles Cwiakala**

1527 S. Fairview Avenue • Park Ridge • IL • 60068 • USA  
Phone or Fax: 1 (847) 823-8747  
Email: cecwiakala@aol.com

**Mr. Frank Mandel**

P.O. Box 157 • New York • NY • 10014-0157 • USA  
Tel: 1 (212) 675-0819 - Fax: 1 (212) 366-6462  
Email: busybird1@me.com

