

**Public
Auction**

Eastern Auctions Ltd.



The Glen Lundeen Collection of the Admiral Issue of Canada

Part 1

1

1

March 18, 2023



Eastern Auctions Ltd.

P.O. Box 250, Bathurst, New Brunswick, E2A 3Z2, Canada

Tel: 1 (506) 548-8986 • Fax: 1 (506) 546-6627

Toll Free Tel: 1 (800) 667-8267 • Fax: 1 (888) 867-8267

Email: bids@easternauctions.com

Website: www.easternauctions.com

PUBLIC AUCTION BID SHEET

Sale Date: March 18, 2023

Please buy the following lots for me at prices not exceeding those shown. I have read the conditions of sale at the end of the catalogue and understand the 18.5% buyer's premium.

Signature: _____

Customer #: _____

Name: _____

Address: _____

City: _____ Province/State: _____

Postal/Zip Code: _____ Country: _____

Telephone: _____

Email: _____

Credit Card Payment

☐ Please charge my purchases to my credit card
I agree to pay a surcharge of 3.5% of the hammer amount.



Card #: _____ Exp Date: _____

Cardholder's Name (as it appears on card): _____

Billing Address if different from address printed above:

Signature: _____

References (First time bidders only): _____

☐ Please tick this box if
you are bidding in US
Dollars:

*If necessary to secure a lot,
you may raise my bids by:*

10% ☐ 20% ☐

Bidding is conducted in the following increments:
Uneven bids will be rounded downwards

Bidding	Increments	Bidding	Increments	Bidding	Increments
\$50 - \$100	\$5.00	\$1,600 - \$3,000	\$100.00	\$16,000 - \$30,000	\$1,000.00
\$110 - \$300	\$10.00	\$3,250 - \$7,500	\$250.00	\$32,500 - \$75,000	\$2,500.00
\$325 - \$750	\$25.00	\$8,000 - \$15,000	\$500.00	\$80,000 - OVER	\$5,000.00
\$800 - \$1,500	\$50.00				

We are not responsible for bidder errors
Please check bids and print clearly

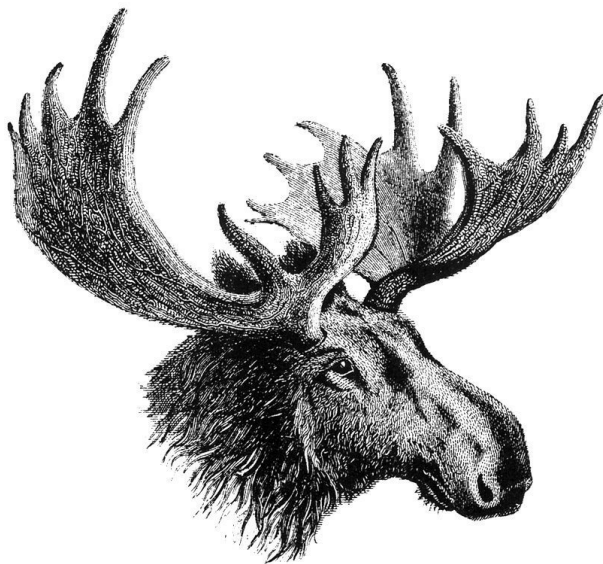
[illegible]

Bid early to avoid disappointment
View this sale on our Web Site: www.easternauctions.com

You may mail, fax, e-mail or phone in your bids. Phone bids must be confirmed in writing. Mailing your bids less than two weeks prior to the sale is not recommended.

Eastern Auctions Ltd.

PUBLIC AUCTION



The Glen Lundeen Collection of the Admiral Issue of Canada Part I

March 18, 2023

Eastern Auctions Ltd.

P.O. Box 250, Bathurst, New Brunswick, E2A 3Z2, Canada

Tel: 1 (506) 548-8986 • Fax: 1 (506) 546-6627

bids@easternauctions.com

easternauctions.com

AUCTION INFORMATION

For assistance and further information please contact:

SPECIALISTS IN STAMPS:

Gary Lyon
Yohann Tanguay

SOFTWARE ENGINEER:

Ron Kozlowski

CONSIGNOR SETTLEMENTS

ACCOUNTS RECEIVABLE:

Cindy Rogers

CATALOGUE EDITORS:

Gary Lyon
Yohann Tanguay
Luc Doucet

VENUE

Eastern Auctions Ltd.
132 Main Street
Bathurst, New Brunswick
E2A 1A4
Tel: 1 (506) 548-8986

TERMS OF SALE AND AUCTION AGENTS
LISTED AT THE BACK OF THE CATALOGUE.

Viewing Sessions

Thursday March 16, 2023 – 9:00am to 4:00pm

Friday March 17, 2023 – 9:00am to 12:00pm

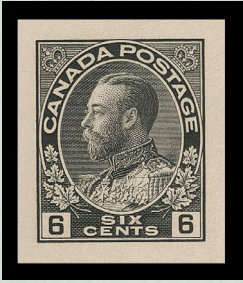
Saturday March 18, 2023 – 9:00am to 12:00pm

Auction Session

Saturday March 18, 2023 – 1:30pm (Lot 501-640)

A Few Highlights of the Glen Lundeen Admiral Collection

Leopold Beaudet



The Admiral Issue has attracted many collectors over the years including some of the most famous names in Canadian philately. The stamps were current during times of innovation and turbulence from late 1911 to 1928 plus a blip in 1931. During its 17-year lifespan, about 17 billion (that's with a "b") Admiral stamps were printed from just over 850 plates. Times were exciting for collectors who lived in that era. The Post Office inundated them with die and colour changes, new values, new plates, shades, semi-postals (War Tax), wet and dry printings, attractive marginal

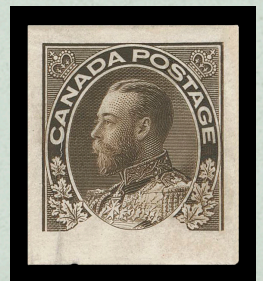
markings, new booklet formats, French booklets, and sidewise and endwise coils. And that's just the stamps.

The postal history of the Admiral era also attracted collectors. Between late 1911 and 1928, there were rate changes, World War I military mail, slogan cancels, growth of rural mail, expansion of railway post offices, settlement of the prairies, first flight covers, and advances in mail processing technology.

In assembling his Admiral collection, Glen Lundeen focused on the stamps, in particular the die proofs and marginal markings such as plate imprints, printing order numbers, lathework, pyramid guides, and the mysterious R-GAUGE inscriptions. Over the years, he put together one of the best, if not the best, currently existing collections of this material. That the collection is extensive is shown by the fact that it is being auctioned over three parts. That it contains many scarce to unique key items is evident from the provenance of the material. That provenance includes such notable Admiral philatelists as Marler, Norris, Jephcott, Lussey, Bayes, Chaplin, Lum, Lindemann, White, and Tomlinson.

Glen shared his Admiral collection and the knowledge he acquired while assembling it with the collecting community. He developed a website to describe and illustrate significant pieces in his collection, and recently transferred the web pages and stamp images to the British North America Philatelic Society (BNAPS) for posting on its website. He loaned key pieces from his collection to the BNAPS Admiral Study Group for a two-frame exhibit displayed at BNAPEX 2011 North Bay to commemorate the 100th anniversary of the first Admiral stamps. With the help of fellow Admiral enthusiasts, he compiled a census of Admiral plate imprint blocks. This census, posted on the BNAPS website [3], will be a useful reference to bidders of the plate material in this auction.

The die proof part of the collection includes many scarce to unique items. Arguably the most important is the proof of the master die (lot 501) showing the common elements of the stamp design, everything but the numeral boxes, the lettering for the denomination, and the bottom frame. From this die was made a transfer roll used to produce a secondary die for each denomination. This master die proof is a key item not only for what it is but also because only one copy is known in private hands.



The collection features a large holding of plate imprint material. Much of this material was originally acquired by two collectors who were active when the Admiral Issue was current: Frederick T. Norris and Major K. Hamilton White.



Norris lived in Bay City, Michigan, and bought his plate imprint material from the Post Office Dept. His Admiral collection was eventually acquired by J. N. Sissons who sold it to Clare M. Jephcott. The collection was auctioned by R. Maresch & Son in June 1990, except for the War Tax

portion which was sold intact in the 1980s to a Florida collector, John Tomlinson. Saskatoon Stamp Centre bought the Tomlinson Admirals and sold the War Tax stamps to Glen Lundeen [1].

Major K. Hamilton White bought Admiral plate imprints and lathework in strips of 10 or 20 from post offices, and jotted down, in pencil in the pane margin near the corner, the purchase date and sometimes the location. He disposed of his collection in 1955. George C. Marler acquired material from the collection and refers to White's marginal annotations frequently in his seminal 1982 book [4]. Some of that material appears in this auction.



Many of the plate imprint pieces are in strips of ten or blocks of 20. This provides valuable information about printing order (PO) numbers punched in the pane margin up to 1915. When a plate was used for more than one printing order, the PO number was defaced and the new one punched in. Hopefully, future custodians of these strip and blocks will keep them intact to preserve the association between plate number and PO number.



Lathework was added to the bottom selvedge of the lower left and lower right panes between late 1916 and late 1924. There are six different lathework patterns, four of which also exist inverted. The goal of lathework aficionados is to obtain, for every value, the lathework patterns that exist on that value. It's a quixotic quest because for several value-lathework combinations only one example is known; however, Glen was close to achieving that quest, having acquired such rarities as the 3¢ brown with type C inverted lathework (lot 554), the 10¢ blue with type D inverted lathework (lot 589), and the 2¢+1¢ brown with type B inverted lathework (lot 629).



Most pyramid guides are scarce. Such is the case for the 2¢ green with a pyramid guide in the left margin, which exists on plates 175-181 (lots 545 and 547). However, there is one pyramid guide in the Glen Lundeen collection



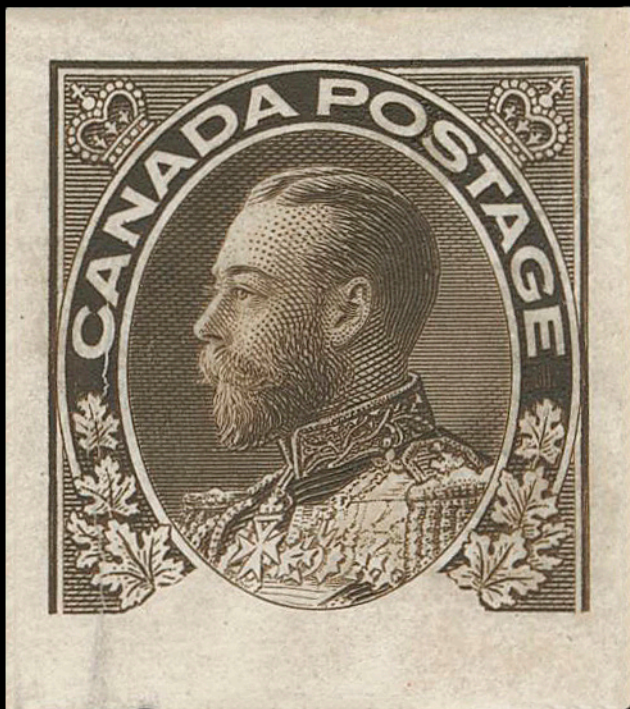
that shouldn't exist, the one on the 2¢ green block of four with the guide in the right margin (lot 546). None of the proofs of the 2¢ green plates (159 to 229) has a pyramid guide in this pane margin. Furthermore, neither Reiche nor Marler mentions the variety. Obviously, it does exist. It must have been engraved on one or more plates after the proofs were printed. Only one complete example of this variety is known, the block of four in the Lundeen collection. Using the guide dots in the right pane margin and other plate features, it was found that the block came from the lower right pane of plate 174 [2].

Another scarce pyramid guide is the “forerunner design” on the 3¢ brown (lot 556). It exists on just two plates, 110 and 111. Marler illustrates the full design [4, p. 59], and mentions that he had seen this design only on the plate proofs.

Not since the Smallman collection in February 2018 has such a wealth of scarce Admiral material been offered at auction.

References

1. Leopold Beaudet, “The Frederick T. Norris Admiral Collection”, *The Admiral's Log*, Vol. XIII, No. 1, Dec. 2013.
2. Leopold Beaudet, *The Admirals after Marler*, BNAPS, 2018. Available on the BNAPS website: <https://bnaps.org/ore/Beaudet-AdmiralsAfterMarler/Beaudet-AdmiralsAfterMarler-v2rx.pdf>
3. Glen Lundeen, *Admiral Plate Census*, BNAPS, 2021. Available on the BNAPS website: <https://bnaps.org/studygroups/admirals/Census/AdmPlateCensus-About.htm>
4. George C. Marler, *The Admiral Issue of Canada*, American Philatelic Society, 1982.



Lot 501 (400% of actual size)

The Glen Lundeen Collection
of the Admiral Issue of Canada, Part I
Lot 501-640

Saturday March 18, 2023 begins at 1:30pm Atlantic Time (AST)

THE MASTER DIE

**THE ENGRAVER'S MASTER PROOF
OF GREAT IMPORTANCE AND UNIQUE IN PRIVATE HANDS**



- 501 P King George V Admiral - The Master Die** An extraordinary Engraved Progressive Proof - THE MASTER DIE - measuring 17.75 x 18mm and printed in dark greyish brown on india paper 20.5 x 23mm, displaying the completed central vignette and surrounding frame but without boxed numerals and denomination tablet at foot; vertical broken crease at right and gummed slightly penetrating the paper, immaterial for this exceedingly rare item, which is to the best of our knowledge, the only one extant in private hands. In our opinion, the most important of all Admiral issue proofs, Fine
Est. 10,000.00+

A similar Master Die Proof currently resides permanently at the Library and Archives Canada, as noted in George Marler's "The Admiral Issue of Canada" handbook, Figure 1.1, pages 20-21, reads: "... it is the upper part of the design that was considered to be common to all of the seven values and accordingly, it followed that it was necessary to engrave by hand on the die of each denomination:

- i) the stems of the leaves;
- ii) the numerals and numeral boxes;
- iii) the words showing the denomination;
- iv) the horizontal and diagonal lines of shading, etc.
- v) the remainder of the frame.

It is among these elements of the design that minor differences between one denomination and another are to be found."

AN INCREDIBLE MASTER DIE PROOF, UTILIZED BY THE ENGRAVER FOR ALL ADMIRAL ISSUE DENOMINATIONS THAT WERE PRODUCED OVER ITS LONG LIFESPAN.



**A VERY RARE COMPLETE SET OF DIE PROOFS IN BLACK
INCLUDING BOTH DIES OF THE ONE CENT & THREE CENT**



F-212

AMERICAN BANK NOTE CO. OTTAWA



X-G-86
DUPLICATE

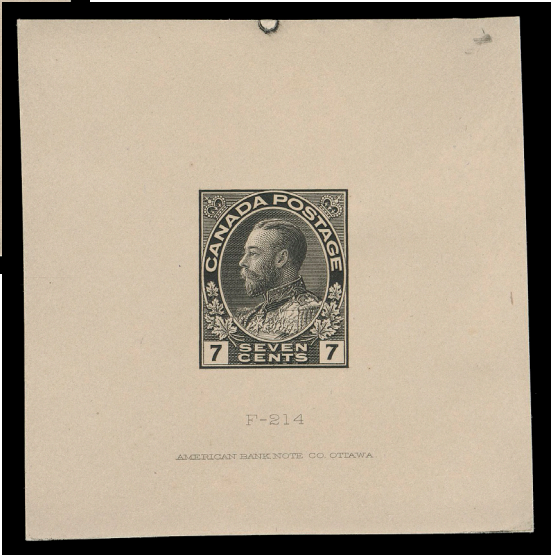
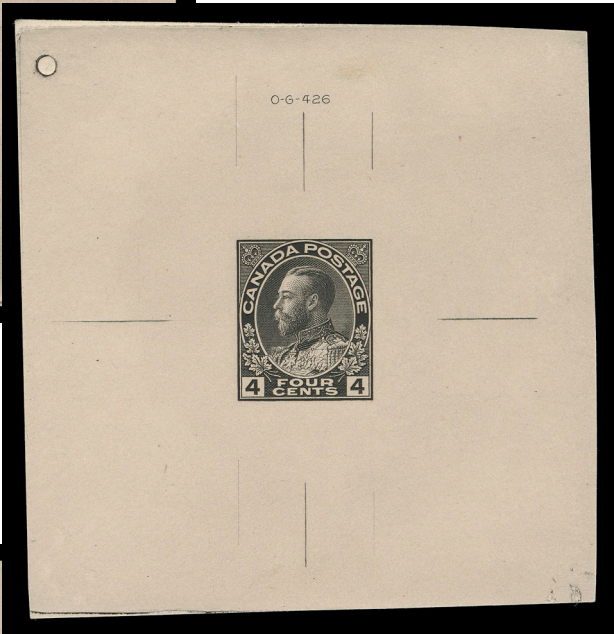
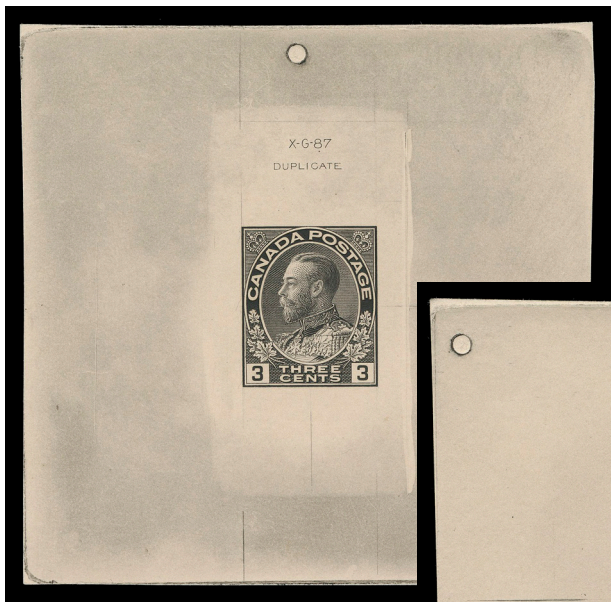


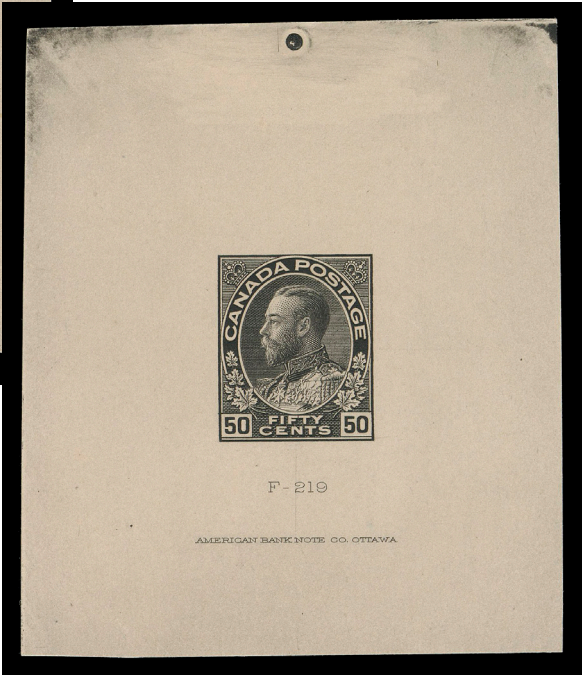
F-211

AMERICAN BANK NOTE CO. OTTAWA

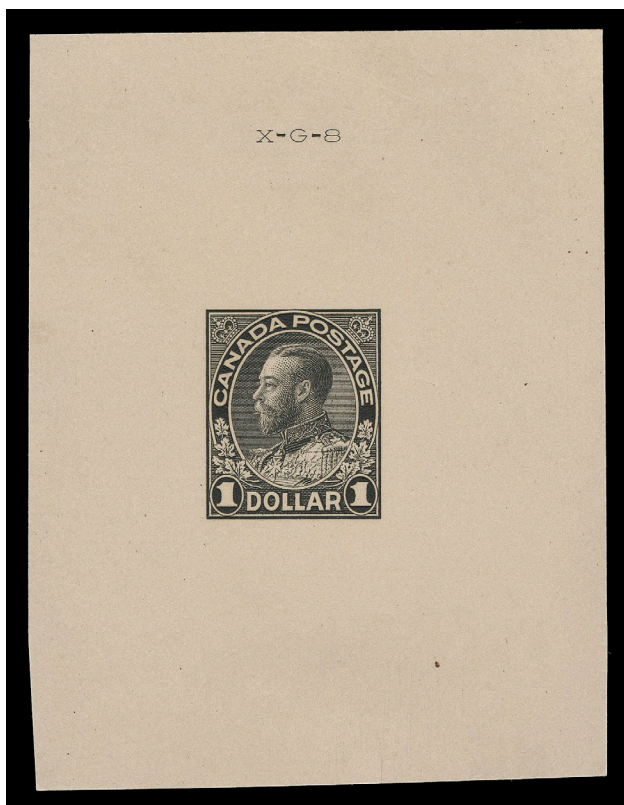


O-G-266





**A VERY RARE COMPLETE SET OF DIE PROOFS
MAKING ITS REAPPEARANCE AFTER MORE THAN 30 YEARS**



- 502 P 104-122, 1c-\$1 King George V Admiral** The outstanding Alfred Lichtenstein set of thirteen Large Die Proofs in black, printed directly to card (0.010-0.011" thick) and measuring between 52-76 x 57-79mm, each with respective die number above or below design, the seven original dies also with American Bank Note Co. Ottawa imprint (23.5mm long). All issued denominations, including both dies of the One cent and Three cent, are present. Exceptional in all respects and very rare as only two other such sets can exist, VF-XF (Unitrade 104-122; Minuse & Pratt 104TC1-122TCb)

Also Illustrated on Pages 8-10 **Est. 35,000.00+**

Provenance: Alfred Lichtenstein Collection of Canada issued from 1897 Jubilee, H.R. Harmer, Inc., November 1954; Lots 270/283
Clare M. Jephcott, Maresch Sale 241, June 1990; Lots 618/919

The unissued 6 cent value and the four War Tax die proofs are offered separately in the next two lots.

AN EXCELLENT OPPORTUNITY TO ACQUIRE A COMPLETE SET OF THESE RARELY OFFERED DIE PROOFS. THEY WERE PREVIOUSLY SOLD INDIVIDUALLY IN BOTH THE LICHTENSTEIN (1954) AND JEPHCOTT (1990) SALES .



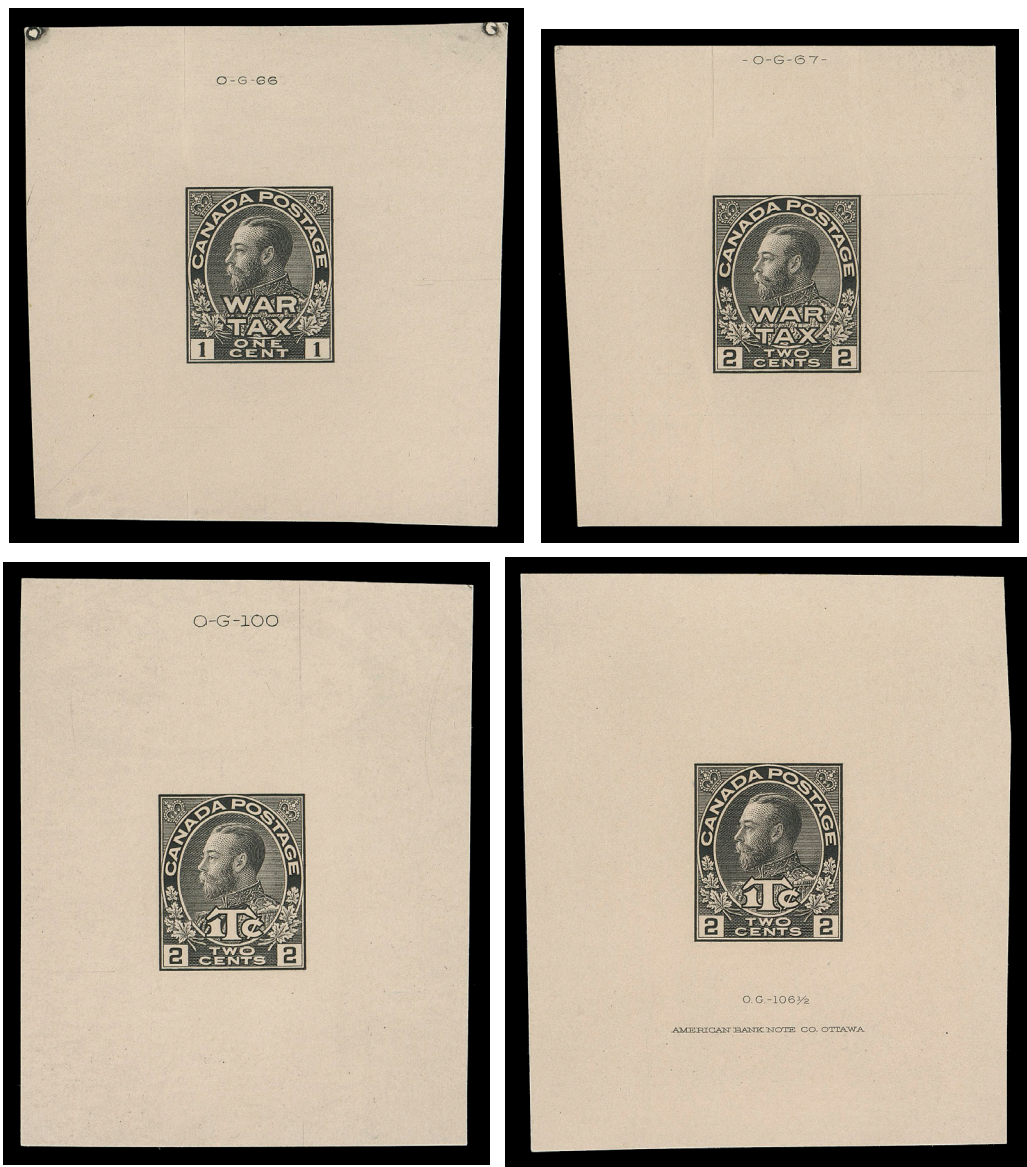
**THE UNISSUED SIX CENT
ONE OF THREE RECORDED LARGE BLACK DIE PROOFS**



- 503 E 6c Admiral** Large Die Essay, prepared but never issued, printed in black directly to card (0.0085" thick) measuring 61 x 61mm; nearly full sinkage and showing die number "OG-421" at top and engraver's guideline at right. Superb in all respects, highly desirable and very rarely offered, XF (Minuse & Pratt E-1) **Est. 4,000.00+**

Provenance: Alfred Lichtenstein Collection of Canada issued from 1897 Jubilee, H.R. Harmer, Inc., November 1954; Lot 277
Clare M. Jephcott (private sale circa. 1980s)

THE SET OF ALL FOUR WAR TAX DIE PROOFS
EXCEEDINGLY RARE AS ONLY TWO OR THREE
OF EACH ARE KNOWN



504 P MR1-MR2, MR3, MR3a, 1c, 2c & 2c+1c War Tax The set of four Large Trial Colour Die Proofs, engraved, printed in black directly to card (0.0085" thick), measuring 52-59 x 58-69mm, each with die number above or below design, the 2c+1c Die II additionally shows the ABNC imprint (23.5mm long). A fabulous and very rare set of War Tax die proofs - the first occasion we recall offering these together as one lot, XF (Minuse & Pratt MR1TC1-MR4TC1b) **Est. 15,000.00+**

Provenance: Unknown provenance, Maresch Sale 122, December 1980; Lots 880-883



505



506

- 505 P 106, 2c Admiral (Original Die) Trial Colour Die Proof in black on india paper 53 x 38mm; a very rare and striking proof, VF. Of note are distinctive, engraved lines visible at the lower left corner of the proof. **Est. 1,000.00+**
- 506 P 106, 2c Carmine (Original Die) Large Die Proof in the colour of issue on india paper 60 x 60mm, die sunk on larger card 77 x 77mm, couple light foxing spots; the hardened die with number "F-211" and ABNC imprint (23.5mm long) below design. A very scarce proof, VF **Est. 1,000.00+**

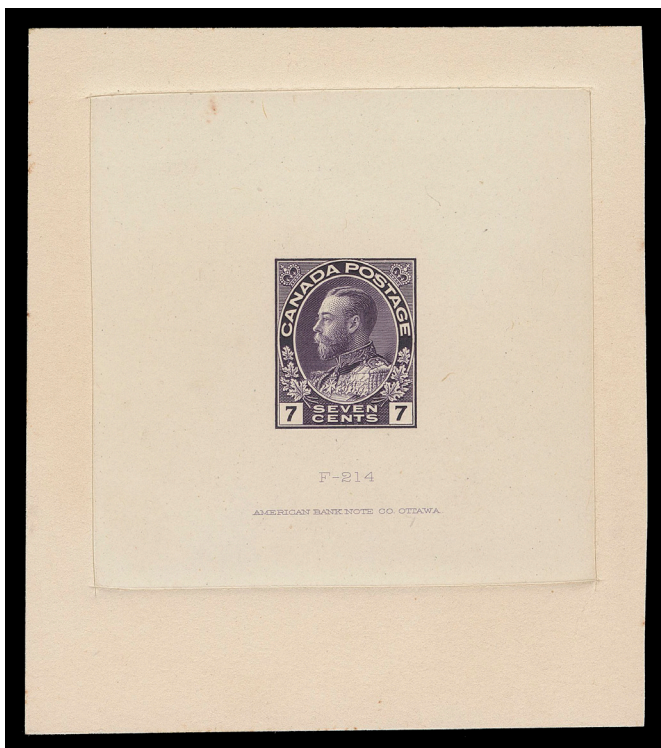


- 507 P 107, 2c Admiral (Redrawn Die - Framelines) A superb Die Proof printed in green, the revised colour, on india paper 55 x 59mm, die sunk on larger card 74 x 76mm; showing die number "F-211" and ABNC imprint (23.5mm long) below design. A very attractive proof in pristine condition, XF **Est. 1,500.00+**

**A SPECTACULAR COLOURED DIE PROOF
SIMILAR TO THE COLOUR ADOPTED FOR THE TWO CENT**



- 508 P 111, 1911 5c Admiral** An exceptional Large Trial Colour Die Proof printed in **dark green** on india paper 63 x 63mm, die sunk on larger card 80 x 77mm; showing die number "F-213" and ABNC imprint (23.5mm long). A fabulous one-of-a-kind, visually striking coloured proof in pristine condition, XF, UNIQUE (Unlisted in Minuse & Pratt) **Est. 5,000.00+**



- 509 P 113, 7c Admiral Large Trial Colour Die Proof in **dark purple** on india paper 63 x 63mm, die sunk on larger card measuring 78 x 89mm; showing die number "F-214" and ABNC imprint 64 x 63mm, archival adhesive marks on reverse. Believed to be the only existing die proof in this colour - **no other Seven cent proof come close to this colour**, VF and attractive. (Minuse & Pratt 113TC1c) ex. *Stan Lum* (September 2013; Lot 870) **Est. 4,000.00+**



- 510 P 116, 10c Admiral Large Trial Colour Die Proof in **dark purple** on india paper 63 x 62mm die sunk on slightly larger card measuring 75 x 75mm; showing die number "F-218" and ABNC imprint (23.5mm) below design. A beautiful coloured proof in immaculate condition, very seldom seen, XF (Unitrade 116) **Est. 2,000.00+**

**A SUPERB COLOURED DIE PROOF
THE ONLY ONE WE HAVE SEEN**



- 511 P 120, 50c Admiral (Original Die)** An extraordinary Large Trial Colour Die Proof printed in **dark blue grey** on india paper 63 x 74mm, die sunk on large card 110 x 119mm; **the unhardened die without die number or imprint**. Exceptional in all respects, a rarity of the Admiral issue, XF and ideal for a serious collection. **Est. 4,000.00+**



AN EXTREMELY RARE DUO OF PRELIMINARY WAR TAX ESSAYS



- 512 E MR3, 1915 (December) 2c+1c War Tax** Composite Essay of an unused 2c carmine affixed to archival card 63 x 66mm, two-line black "WAR TAX / 1¢" added in printing ink by the designer, not approved and quite likely UNIQUE, a great showpiece, VF (Unlisted in Minuse & Pratt) *ex. "Scenic" (Sam Nickle) Collection of Proofs & Essays (November 1982; Lot 2317)* **Est. 2,500.00+**



- 513 E MR3, 1915 (December) 2c+1c War Tax** Composite Essay of an unused 2c rose red affixed to archival card 92 x 78mm, outlined in red ink and Chinese white paint "1¢" above "TWO CENTS". This model was sent for consideration, approved and initialed. Another great showpiece, VF (Unlisted in Minuse & Pratt handbook) **Est. 2,500.00+**

A similar composite die essay is pictured in George Marler "The Admiral Issue of Canada" handbook on page 434 (figure WT3.2).

ADMIRAL STAMPS

Featuring a superlative offering of plate numbered multiples, including early printings, shades, some rare lathework and other positional imprint blocks.



- 514 ★ **104b, 1912 1c Blue Green** Lower right Plate 4 strip of twenty with printing order number "83", radiant colour and unusually well centered for a large multiple, small thin on second stamp in lower row, hinged on bottom left and top centre pairs leaving sixteen NH. A remarkable early plate block, VF (Unitrade cat. \$3,120) **Est. 600.00+**



- 515 ★ **104b, 1912 1c Blue Green** A remarkably fresh, well centered lower right Plate 9 strip of ten with printing order number "100", tiny adhesion spot on right stamp, fabulous colour, VF NH (Unitrade cat. \$1,800) **Est. 400.00+**



- 516 ★ **104b, 1912 1c Blue Green** Lower left Plate 12 strip of twenty in a deeper shade, with printing order number "110", exceptionally rich colour and sharp impression on fresh paper, quite well centered for such a large multiple, small thin on top right stamp; penciled "Spt 13 / 12" date of acquisition. A fabulous plate block, VF NH (Unitrade cat. \$3,480) **Est. 750.00+**



- 517 ★ 104b, 1912 1c Blue Green Upper right Plate 29 strip of ten with printing order number "131", rich colour and very well centered as a strip, LH in selvedge only, stamps VF NH (Unitrade cat. \$1,800)
Est. 400.00+



- 518 ★ 104c, 1913 1c Deep Blue Green Lower right Plate 47 strip of ten with amazing deep colour and post office fresh. A very scarce early shade plate multiple in choice condition, F-VF NH (Unitrade cat. \$2,800)
Est. 600.00+



- 519 ★ 104b, shade, 1913 1c Blue Green Matching lower margin strips of ten with consecutive plate numbers - Plate 54 strip in a deeper shade, well centered and VF NH; Plate 55 bright blue green, left stamp hinged, others Fine NH; Plate 56 in similar shade but showing "hairlines" mostly in lower margin, right stamp hinged with light crease, seven stamps NH, F-VF; last two with initial printing order number "146" etched out and replaced with "157". A rare and very appealing trio. (Unitrade cat. \$2,932)
Est. 600.00+



- 520 ★ **104b, 1913 1c Blue Green** Upper right Plate 61 strip of ten with printing order number "157" in choice condition, lovely rich colour, well centered, LH in selvedge only, stamps VF NH; penciled "Oct 23 '13" date of acquisition. (Unitrade cat. \$1,800) **Est. 400.00+**



- 521 ★ **104, 1913 1c Dark Green** Matching upper right Plates 75 & 76 strips of ten with printing order number "194", both equally well centered with rich colour on bright fresh paper, LH in top selvedge, leaving stamps NH; a very attractive duo, penciled on same day "18 May '14" date of acquisition, VF. (Unitrade cat. \$2,400) **Est. 500.00+**



- 522 ★ **104, 1915 1c Dark Green** Three strips of ten with consecutive plate numbers, all unusually well centered; LL Plate 97 right stamp LH, others NH; UR Plate 98 with some split perfs mostly strengthened in the selvedge, six NH; LR Plate 99 left stamp LH, others NH, VF (Unitrade cat. \$3,120) **Est. 600.00+**

- 523 ★ **104, 1915 1c Dark Green** An impressive group of four strips of ten with consecutive plate numbers: UL Plate 109, LH in selvedge only, stamps NH; LR Plate 110 seven stamps NH; and UL Plates 111 and 112 LH in selvedge only, stamps NH; last two with original printing order number "312" etched out and new number "365" added. Plates 110 and 111 are F-VF and Plates 109 and 112 are VF centered. (Unitrade cat. \$3,700) **Illustrated on Page 22 Est. 750.00+**



-X523-

524 ★ 104, 1915-1916 1c Green An appealing group of four strips of ten with consecutive plate numbers: UL Plate 121, UR Plate 122 and LL Plates 123 and 124. First two well centered, hinge support in selvedge, all stamps NH; other two reasonably centered with seven and five NH respectively, F-VF (Unitrade cat. \$3,440) Est. 750.00+



525 ★ 104e, 1916 1c Yellow Green Four fresh strips of ten with consecutive plate numbers: UR Plate 131, UR Plate 132, UL Plate 133 (no left side selvedge), UR Plate 134; first two strips well centered. All four hinged in selvedge only leaving all stamps NH, F-VF (Unitrade cat. \$3,800) Est. 750.00+



526 ★ 104e, 1917 1c Yellow Green Brilliant fresh plate strips of ten with consecutive numbers: UR Plate 141 (no right-side selvedge), UL Plates 142, 143 and 144; first two well centered, other two fine. Plate 141 strip is VLH on two stamps; Plate 142 LH in selvedge, stamps NH; Plates 143 and 144 both reinforced between fourth and fifth stamps leaving eight NH, F-VF (Unitrade cat. \$2,600) Est. 500.00+



527 ★ 104, 104e, 1918 1c Yellow Green & Green Four brilliant fresh matching upper left plate strips of ten with consecutive plate numbers 145 to 148; all with nearly VF centering and hinged in selvedge only leaving all stamps NH; the first two in the yellow green shade and Plate 147 & 148 in green; each with penciled date of acquisition, F-VF (Unitrade cat. \$2,800) Est. 750.00+



- 528 ★ 104, 104e, 1918 1c Green & Yellow Green** Four attractive, consecutive plate strips of ten, LH in margin only leaving all stamps NH: UL Plate 149, VF, UL Plate 150, F-VF natural gum bends, UR Plate 151 & Plate 152 both Fine; Plates 149 & 150 in green shade and Plates 151 & 152 in yellow green; each with pencil date of acquisition. (Unitrade cat. \$2,300) **Est. 500.00+**



- 529 ★ 104ii, 1920 1c Dark Yellow Green** Four plate strips of ten with consecutive plate numbers - the last plates used for this stamp: UL Plate 167, F-VF, 168, F-VF, 169, Fine and UR Plate 170, VF. First two strips LH in selvage only; Plate 169 reinforced split perfs between fifth and sixth stamps, eight stamps NH; Plate 170 light fingerprints on gum (counted as hinged); each with penciled date of acquisition, F-VF (Unitrade cat. \$2,780) **Est. 500.00+**

YOU ARE INVITED TO JOIN THE BRITISH NORTH AMERICA PHILATELIC SOCIETY

BNA Topics, quarterly journal

Benefits include annual convention and exhibition, more than 20 specialized study groups, regional groups in many cities in Canada and the United States, online sales circuits, the Horace Harrison online library and a generous discount on BNAPS book purchases.

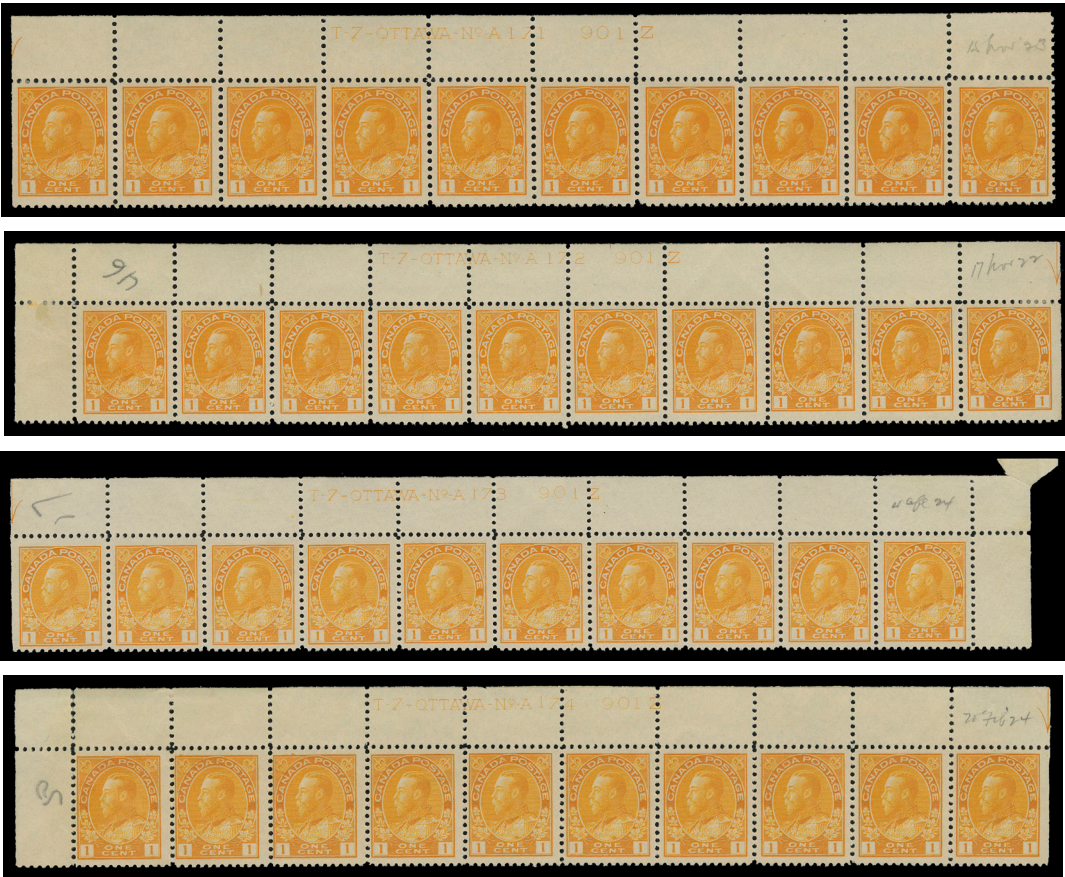
Contact: **P. Charles Livermore, Secretary**
288 Cook Rd
East Aurora, NY 14052 USA
email: secretary@bnaps.org
phone: 917 863 9011
website: <http://www.bnaps.org>

BNAPS – The Society for Canadian Philately





- 530 ★ 105f, 1924 1c Yellow, Die I (Dry Printing) An appealing mint block, lovely bright fresh colour and displaying ideal full strength Type D lathework, hinged at top leaving lower pair NH, VF (Unitrade cat. as two NH singles) **1,200.00**



- 531 ★ 105, 1921 1c Orange Yellow, Die I (Wet Printing) Four strips of ten with consecutive plate numbers: UR Plate 171, straight edge stamp hinged, natural gum skip on two, NH, UL Plate 172 straight edge stamp hinged, nine stamps NH, UR Plate 173, LH in selvedge, stamps NH and UL Plate 174 straight edge stamp LH, others NH. Plates 171 and 174 in a deeper orange yellow shade, latter F-VF centered, the other three strips VF; each with penciled date of acquisition (Unitrade cat. \$3,935) **Est. 750.00+**



- 532 ★ **105, 1922 1c Yellow, Die I (Wet Printing)** Matching Upper Left Plates 181 & 182 strips of ten, bright and fresh, VLH on straight edge stamp leaving nine stamps in both strips NH; penciled "Apr 21 / 25" and "Apr 22 / 25" dates of acquisition, VF (Unitrade cat. \$2,240) **Est. 500.00+**



- 533 ★ **106c shade, 1912 2c Deep Rose Carmine** Upper left Plate 8 strip of ten with superior centering and exceptional colour, some supported split perfs, centre pair hinged leaving other eight stamps NH; a beautiful early plate multiple, VF (Unitrade cat. \$1,040) **Est. 300.00+**



- 534 ★ **106ii, 1912 2c Deep Rose Red** An attractive, consecutive, matching quartet of plate strips of ten: Plate 21 Fine, Plate 22 Fine, Plate 23 F-VF and Plate 24 F-VF, from upper right pane position and with radiant colour, first two strips with etched printing order number "116" and last two etched "122" at left. Each strip hinged in selvage, as well as Plate 21 stamp Pos. 1, all others including stamps from other three plates are never hinged. A very scarce quartet, Fine to F-VF (Unitrade cat. \$1,790) **Est. 400.00+**

- 535 ★ **106ii, 1913 2c Deep Rose Red** A remarkable upper right Plate 45 block of twenty, printing order number "195" at left, very distinctive among the myriad shades found on this particular stamp, quite well centered, hinged between sixth and seventh stamp in top row, the other eighteen are NH; penciled "9 Nov 16" date of acquisition. A fabulous plate multiple, F-VF NH (Unitrade cat. \$1,590+) **Illustrated on Page 27 Est. 500.00+**

- 536 ★ **106, 1914 2c Carmine** An unusually choice mint Upper Left Plate 67 strip of ten, well centered with large margins, LH in selvage only, stamps with pristine original gum, VF+ NH (Unitrade cat. \$1,200) **Illustrated on Page 27 Est. 300.00+**



535



536



537 ★ 106iv, 1914 2c Orange Red Lower right mint Plate 76 strip of ten in the striking, scarcer shade, well centered with three stamps never hinged; penciled "Aug 9 . 15" date of acquisition. A lovely plate strip for the shade enthusiast, VF (Unitrade cat. \$1,120) **Est. 300.00+**



538 ★ 106 shades, 1915 2c Carmine Consecutive trio of plate strips of ten: LL Plate 85 nearly VF centering, UL Plate 86 VF and UR Plate 87 F-VF, each strip in a different shade of carmine and one or two stamps hinged / lightly hinged, leaving others never hinged; a very scarce trio of plate numbered strips, F-VF to VF (Unitrade cat. \$2,350) **Est. 500.00+**



539 ★ 106iv, 1915 2c Orange Red Lower Left mint Plate 94 block of twenty, fabulous, distinctive shade among the myriad known, unusually well centered for such large plate block, left sheet margin partly severed, some split perfs in places, sensibly reinforced by hinge between seventh and eighth stamp of top row, both straight edge stamps LH, leaving sixteen stamps never hinged, VF (Unitrade cat. \$3,640)
Est. 1,000.00+



540 ★ 106, 1916 2c Carmine Consecutive, matching trio of plate strips of ten: Plate 101 VF, Plate 102 F-VF, and Plate 103, from upper left pane position and with deep fresh colour, first two strips hinged / LH in selvage only, stamps NH, Plate 103 hinged on two stamps, others NH. Select plate strips with better centering and overall freshness, VF (Unitrade cat. \$2,940)
Est. 600.00+



- 541 ★ 106, 1918 2c Carmine A post office fresh quartet of plate strips of ten, all matching upper right positions with consecutive Plate numbers 119 to 122, the first F-VF, all others unusually well centered and VF, last two in a darker shade of carmine. Each strip LH in margin leaving all stamps NH, F-VF to VF+ (Unitrade cat. \$4,300) **Est. 750.00+**



- 542 ★ 106, 1919 2c Carmine Red Brilliant fresh Upper Left mint Plate 137 block of twenty, nicely centered, radiant colour on fresh paper, lightly hinged in selvage only, all stamps with pristine original gum, never hinged, VF (Unitrade cat. \$2,400) **Est. 600.00+**



- 543 ★ 106iii, v, vii, 1920 2c Admiral A quartet of plate strips of ten with consecutive plate numbers, in three distinctive shades: UR Plate 143 and UL Plate 144 in deep red, UR Plate 145 in red and UR Plate 146 in dark carmine; minor perf separation in margin of Plate 143. Plate 145 F-VF centered, otherwise VF, lightly hinged in margins leaving all stamps NH. An attractive group in choice condition (Unitrade cat. \$4,300) Est. 750.00+

**TWO CENT GREEN TYPE D LATHEWORK
ON THE RARELY SEEN DRY PRINTING**



- 544 ★ 107e, 2c Yellow Green (Dry Printing) A well centered mint pair in the distinctive dry printing, with nearly full strength Type D lathework, large margins and fabulous fresh colour, part of guide arrow visible at bottom left. A very scarce lathework and printing combination, VF+ LH 4,000.00

Provenance: The “Lindemann” Collection – Canada Admiral Issue (private treaty circa. 1997)



- 545 ★ 107iii, 1922 2c Deep Yellowish Green (Wet Printing) An impressive mint block displaying unusually complete six-line Pyramid Guideline in left margin, fabulous rich colour on a distinctive medium wove paper, very scarce, F-VF NH 1,900.00



- 546 ★ 107i, iii, 1922 (circa.) 2c Deep Green on Thicker Wove Paper (Wet Printing) Mint block with rich colour and showing a superb impression of the complete six-line Pyramid Guide in right sheet margin, very rare thus – the first mint block encountered by Leopold Beudet, leading authority on the Admiral issue; hinged on top pair, a great item for the specialist, Fine Est. 1,000.00+



- 547 ★ 107a, iii, 1924 2c Deep Green on Thin Paper (Wet Printing) A post office fresh mint block on the distinctive thin wove paper, showing a five-line Pyramid Guide in the left margin, full unblemished original gum, F-VF NH 1,900.00



- 548 ★ **107 shade, 1923 2c Deep Yellow Green (Wet Printing)** Three consecutive, matching plate strips of ten, each in a lovely bright, deep shade: Plates 175, 176, 177 from Upper Left position; penciled date of acquisition. Each well centered, LH on straight edged stamp only leaving nine NH in each; Plate 175 has natural gum skip on one stamp; a visually striking trio, VF (Unitrade cat. \$4,050) **Est. 750.00+**



- 549 ★ **107i, 1923 2c Deep Green (Wet Printing)** Plate 180 block of fourteen (upper left pane), minor split perfs in margin, amazing deep colour on fresh paper, very well centered, LH at top right corner just touching straight edge stamp, all others VF NH (Unitrade cat. \$2,000) **Est. 500.00+**
- 550 ★ **107e, 1924 2c Green (Dry Printing)** Matching pair of Upper Right Plates 183 & 184 strips of ten, penciled date of acquisition, LH in selvedge, all stamps are NH except one straight edged stamp, F-VF (Unitrade cat. \$985) *Illustrated on Page 33* **Est. 250.00+**
- 551 ★ **107a, 1924 2c Deep Green on Thin Paper (Wet Printing)** Quite well centered Upper Left Plate 185 block of twenty, some supported split perfs, latter just touching fourth and fifth stamps, top right stamp LH, the other seventeen are NH, VF (Unitrade cat. \$1,800) *Illustrated on Page 33* **Est. 500.00+**
- 552 ★ **107iv, 1925 2c Yellow Green (Dry Printing)** A brilliant fresh, matching pair of Upper Right Plates 199 & 200 strips of ten, both lightly hinged once in the selvedge leaving all stamps mint NH; both with penciled date of acquisition, F-VF (Unitrade cat. \$960) *Illustrated on Page 33* **Est. 250.00+**



-550-



551



X552



- 553 ★ 107iv, 1927 2c Yellow Green (Dry Printing) Four plate strips of ten with consecutive plate numbers - the last four used for this issue: UR Plate 226, VF, UL Plate 227, F-VF, UL Plate 228, VF & UL Plate 229, VF; all four strips LH in selvedge and on straight edge stamp, the other nine stamps in each strip are NH, a lovely group (Unitrade cat. \$2,900) Est. 600.00+



**THE FAMOUS MARLER BLOCK
WITH TYPE C INVERTED, EASILY RANKING
AMONG THE RAREST ADMIRAL LATHEWORK**



- 554 ★ 108, 1920 3c Brown (Wet Printing)** A peerless mint block displaying one of the rarest examples of lathework, the Type C INVERTED plainly visible, well centered with intact perforations, bright colour and clear impression on fresh paper, hinged at top leaving the important lower pair and sheet margin with pristine original gum, NEVER HINGED. A glorious lathework block of the utmost rarity and desirability, VF OG / NH **24,000.00**

Provenance: George Marler, Maresch Sale 143, September 1982; Lot 281

Admiral collection, unknown provenance, Maresch Sale 250, December 1990; Lot 966
The "Lindemann" Collection – Canada Admiral Issue (private treaty circa. 1997)

After extensive research for other mint examples, we were only able to find:

1) an unused (no gum) block; ex. Stan Lum, September 2013; Lot 1172 and John Smallman, Eastern Auctions, February 2018; Lot 137;

2) mint NH single; ex. "Crossings", Eastern Auctions January 2010; Lot 399 and John Smallman, Eastern Auctions, February 2018; Lot 138

We have also seen images of two others: one faulty unused (no gum) and the other mint hinged.

TWO DIFFERENT TYPES OF THE PYRAMID GUIDE



- 555 ★ 108iv, 1924 3c Brown (Dry Printing) Mint block of four showing an unusually strong impression of the six-line Pyramid Guide in right margin, lightly folded along perfs, a very scarce block that is under-catalogued in our opinion, Fine+ NH 1,200.00



- 556 ★ 108iv, variety, 1922-1923 (circa.) 3c Brown (Wet Printing) A mint positional block showing a most unusual "two-line" Pyramid Guide facing in reverse. An interesting item which we do not recall seeing before, F-VF NH Est. 750.00+

Provenance: Robert A. Chaplin, Maresch Sale 223, January 1989; Lot 685
The "Lindemann" Collection – Canada Admiral Issue (private treaty circa. 1997)

An extremely rare Pyramid Guide type, after extensive searching for comparable, we were only able to locate one other badly off-centered (and with fault) in the Stan Lum collection (September 2013; Lot 1111 – described then as "Unique Admiral Rarity").



557 ★ **108, 1918 3c Brown (Wet Printing)** Upper Left Plate 2 block of twenty, fresh colour, end pairs hinged leaving 16 stamps NH. A very scarce, early plate block, F-VF (Unitrade cat. \$1,480) **Est. 300.00+**



558 ★ **108b, 1918 3c Yellow Brown (Wet Printing)** The visually striking scarcer shade in a well centered Upper Right Plate 22 strip of ten, penciled date of acquisition, LH in selvage and natural bend on Position 8, otherwise VF NH (Unitrade cat. \$1,950) **Est. 400.00+**



559 ★ **108 shades, 1918-1919 3c Brown (Wet Printing)** An attractive and very scarce quartet of plate strips of ten, displaying three shades of brown: UL Plate 29 & 31 and UR Plate 33 & 34, each with pencil date of acquisition. Plate 33 reasonably centered, others quite well centered. First two strips with straight edge stamp VLH and nine stamps NH, last two strips LH in selvage with stamps NH, F-VF to VF (Unitrade cat. \$5,150) **Est. 1,000.00+**



- 560 ★ 108, 1919 3c Brown (Wet Printing) Consecutive & matching trio of plate strips of ten: Plate 37, 38, 39 from the Upper Right pane position; penciled dates of acquisition. Each strip in a lovely deep rich shade, LH in selvedge only leaving all stamps NH. A very scarce group of plate strips, F-VF (Unitrade cat. \$2,550) **Est. 600.00+**



- 561 ★ 108, 1920 3c Brown (Wet Printing) Consecutive & matching trio of plate strips of ten, each in a lovely deep rich shade: Plate 72, 73, 74 from Upper Left pane position; penciled date of acquisition. Each strip quite well centered, LH in selvedge only leaving all stamps NH. An impressive and very scarce group of plate strips, VF (Unitrade cat. \$4,500) **Est. 1,000.00+**

These three plates were the source of the extremely rare Type C inverted lathework (found on lower left & lower right panes).



- 562 ★ **108ii, 1920 3c Dark Brown (Wet Printing)** A choice, well centered Upper Right Plate 99 strip of ten, penciled "May 13 / 21" date of acquisition, amazing deep colour, single light hinge in selvage just touching straight edged stamp leaving nine NH, VF (Unitrade cat. \$1,680) **Est. 500.00+**



- 563 ★ **108, 1921 3c Brown (Wet Printing)** Two attractive, matching plate strips: Plates 106 and 107 Upper Right positions; penciled date of acquisition. Both with lovely fresh colour and well centered. Plate 106 LH in selvage and straight edge stamp, nine stamps NH, Plate 107 LH in selvage, two stamps with natural gum skip, eight stamps NH. Very Fine (Unitrade cat. \$2,700) **Est. 500.00+**



- 564 ★ **109d, 1923 3c Rose Carmine, Die I** A choice Upper Left Plate 117 strip of ten, couple light hinge marks in selvage, stamps are never hinged; penciled "May 4 / 26" date of acquisition. A selected plate strip in a lovely shade, VF (Unitrade cat. \$1,200) **Est. 250.00+**

- 565 ★ **109, 1924 3c Carmine, Die I** A superb Plate 142 block of eight, very well centered with large margins, bright colour, a few split perfs in selvage only, unusually choice, XF NH (Unitrade cat. \$720) **Illustrated on Page 39 Est. 250.00+**

- 566 ★ **109c, 1925 3c Carmine, Die II** Three matching plate strips of ten with consecutive numbers - plates 156, 157 and 158 Upper Left; penciled date of acquisition. Each strip LH in selvage only leaving all stamps NH. A rare trio of plate strips of the scarcer die. F-VF (Unitrade cat. \$3,900) **Illustrated on Page 39 Est. 1,000.00+**

- 567 ★ **109c, 1925 3c Carmine, Die II** A seldom seen Plate 161 block of eight, especially attractive with radiant colour, light LH in selvage, stamps are VF NH (Unitrade cat. \$1,680) **Illustrated on Page 39 Est. 400.00+**



565



-566-



567



- 568 ★ **110b, iv, 1922 4c Olive Yellow (Wet Printing)** A noteworthy mint vertical pair showing the very elusive Pyramid Guide in right margin, an unusually strong "six-line" impression clearly visible, nicely centered with deep colour, VF LH **Est. 500.00+**

Although the 4c Pyramid Guideline has a similar catalogue value as the 5c violet on thin or medium paper, it is far more difficult to obtain.



- 569 ★ **110 shade, 1922 4c Deep Olive Bistre (Wet Printing)** Upper Left Plate 2 block of twenty, nicely centered with amazingly rich colour, lightly hinged on vertical end pairs only, leaving the other sixteen stamps with full unblemished original gum, never hinged. A fabulous and choice plate block in a distinctive deeper shade, VF LH / NH (Unitrade cat. \$5,200) **Est. 1,250.00+**

Eastern Auctions Ltd.

In our Mail Auction, we offer about 2000 individually described and profusely illustrated lots approximately every six weeks. There is NO BUYER'S COMMISSION. We make every effort to present material for every collecting interest and budget. Large lots and individual stamps from worldwide countries and areas are always offered. Contact us to receive a complimentary catalogue of our next Mail Sale.

Toll Free in North America
1(800) 667-8267

P.O. Box 250 - Bathurst - New Brunswick - E2A 3Z2 - Canada
Tel 1(506) 548-8986 - Fax 1(560) 546-6627
email contact@easternauctions.com - web www.easternauctions.com





- 570 ★ **111b, 1911 5c Grey Blue** A remarkable mint upper Plate 1 block of twenty in an outstanding bright shade, initial printing order numbers "84" and "104" etched out and new number "115" at left; severed between second and third columns supported by hinges, mild perf separation mostly in top margin and natural gum bends, four stamps hinged leaving sixteen NH. A rare and visually striking plate block, F-VF (Unitrade cat. \$12,200) ex. *C.M. Jephcott (June 1990; Lot 787)* **Est. 2,500.00+**



- 571 ★ **111a, 1911 5c Indigo** A visually striking top margin mint Plate 2 strip of five, printing order number "84" etched at right, distinctive deep bold colour and impression of the first printing (Plates 1 and Plate 2 were simultaneously issued), lightly hinged in selvedge only, all stamps are NH. A scarce early printing plate multiple, Fine+ (Unitrade cat. \$2,100) ex. *George Marler (September 1982; Lot 326)* **Est. 500.00+**



- 572 ★ **111, 1914 5c Blue** A reasonably centered Upper Right Plate 8 strip of ten with rich colour; hinged in margin, split perfs reinforced between second and third stamps, eight stamps are NH. A rare plate strip, F-VF (Unitrade cat. \$4,530) ex. *George Marler (September 1982; Lot 351), Robert Bayes (private treaty 1996)* **Est. 1,000.00+**



- 573 ★ **111, 1915 5c Bright Blue** Post office fresh, well centered upper right Plate 9 strip of ten, pencil "July 20 / 20" date of acquisition. End stamps LH, a few split perfs in margin strengthened by a hinge; eight stamps NH. A very scarce plate strip with great colour, F-VF (Unitrade cat. \$4,530) **Est. 1,000.00+**



- 574 ★ **112i, 5c Grey Violet (Wet Printing)** An attractive shade in a block of four displaying unusually strong, nearly full strength Type D lathework, very scarce thus, LH on top pair leaving lower pair NH; a striking shade and lathework combination, VF (Unitrade 112i; cat. for lesser strength lathework) **960.00**



575



576

- 575 ★ **112a, v, 1924 5c Violet on Thin Paper (Wet Printing)** A mint block showing the six-line Pyramid Guide in left margin, post office fresh colour, scarce, F-VF NH **2,400.00**
- 576 ★ **112a, v, 1924 5c Violet on Thin Paper (Wet Printing)** A post office fresh mint block of four showing the six-line Pyramid Guide in right margin, deep rich colour, F-VF NH **2,400.00**



- 577 ★ **112v, 1922 5c Violet on Medium Wove (Wet Printing)** A fresh mint block with rich colour showing clear five-line Pyramid Guide in right margin, difficult to find, F-VF NH **2,400.00**



- 578 ★ **112iii, 1923 5c Grey Violet (Wet Printing)** Upper Right Plate 19 strip of ten with Retouched Vertical Line in UR spandrel on each, radiant colour on fresh paper, lightly hinged in selvedge leaving stamps F-VF NH; penciled "24 Apl 24" date of acquisition from Post Office by pioneer collector Major K. Hamilton White (Unitrade cat. \$2,200) **Est. 500.00+**



- 579 ★ **112ii, 1924 5c Rose Violet (Wet Printing)** Upper Right Plate 21 block of twenty, exceptional colour and bright fresh impression in an unmistakable shade, faint natural bend on two stamps, lightly hinged in selvedge only, all stamps are NH. A beautiful plate block, F-VF (Unitrade cat. \$2,200) **Est. 500.00+**



- 580 ★ **112, 1924 5c Violet (Wet Printing)** Upper Left Plate 22 strip of ten, brilliant fresh colour, hinged on straight edged stamp only, otherwise F-VF NH (Unitrade cat. \$1,030) **Est. 250.00+**



- 581 ★ **113a, 1913 7c Olive Bistre** A remarkable Plate 3 block of twenty in a very attractive shade, printing order number "189", exceptional colour on fresh paper, a few negligible split perfs in top margin, end pairs lightly hinged leaving sixteen stamps NH, seldom encountered in such a large plate block, F-VF (Unitrade cat. \$3,840) *ex. C.M. Jephcott (June 1990; Lot 821)* **Est. 1,000.00+**



- 582 ★ **113iv, 1913 7c Greenish Yellow** An impressive, well centered Plate 4 strip of six with printing order "189", deep rich colour on fresh paper, lightly hinged in selvedge and left stamp leaving five stamps NH. A very scarce plate multiple in an elusive shade, VF (Unitrade cat. \$6,400) *ex. Robert Bayes (private treaty 1996)* **Est. 1,500.00+**



- 583 ★ **114b, 1924 7c Red Brown (Wet Printing)** A fabulous, unusually well centered Upper Right Plate 7 block of twenty, end pairs VLH leaving sixteen stamps NH, VF+; a choice and scarce plate block. (Unitrade cat. \$2,340) *ex. C.M. Jephcott (June 1990; Lot 830)* **Est. 500.00+**



- 584 ★ 115, 1925 8c Blue A selected Plate 1 block of eight, etched "H" above "L.B.C." characteristic of upper left pane, very well centered with large margins, fabulous colour and pristine original gum. A wonderful plate block, XF NH (Unitrade cat. \$1,440+) **Est. 500.00+**

**THE ELUSIVE TYPE B LATHEWORK
VERY RARELY SEEN AS A BLOCK**



- 585 ★ 116, 1918 10c Plum An impressive corner margin block with brilliant fresh colour, showing ideally strong, full strength Type B lathe-work, which is by far the scarcest type on the 10c plum, a beautiful block that is among a very small number of multiples still extant, hinged at top leaving lower pair NEVER HINGED, Fine+ (Unitrade cat. as two NH singles) **8,800.00**

We are aware of only two other mint blocks, each with two or three stamps hinged.



- 586 ★ **116a, 1911-1912 10c Reddish Purple** A spectacular upper margin mint Plate 2 block of twenty, printing order number "86" etched at left; a few split perforations mainly strengthened by hinges, displaying the bright, delicate shade of the first printing (Plates 1 and 2 were simultaneously issued), eleven stamps NEVER HINGED. A rare, early issued plate strip of this key Admiral stamp, F-VF (Unitrade cat. \$14,660) ex. *C.M. Jephcott (June 1990; Lot 852)* **Est. 3,000.00+**



- 587 ★ **116, 1913 10c Brown Purple** Upper Left Plate 3 strip of ten, portion of printing order number "175" above Position 8, exceptionally bright shade, light hinged in selvage only leaving all stamps NH and Fine; a rare large plate numbered multiple of this key value Admiral. (Unitrade cat. \$2,400+) **Est. 750.00+**



- 588 ★ **116, 1913 10c Plum** A precisely centered lower margin Plate 4 block of six, radiant colour on fresh paper with three stamps NH, a rare and attractive plate block, XF (Unitrade cat. \$4,800) **Est. 1,250.00+**



- 589 ★ 117, 10c Blue (Wet Printing) Mint single with the exceedingly rare Type D inverted lathework - better strength (40%) than the usual trace as found on the mere few examples known, allowing characteristics to ascertain its identity, faint hinge mark in the margin, stamp NH. Among the rarest of all Admiral lathework, Fine **Est. 1,250.00+**

Only four pieces have been reported - a mint single, a mint block, a vertical precancelled strip of three and a used single.



- 590 ★ 117iv, 10c Blue (Wet Printing) Right margin pair in a deeper shade of blue, showing the very rare Pyramid Guide - a remarkably sharp impression of "six-line" clearly visible, LH with faint crease on top stamp. Pyramid Guides on the 10c blue are very elusive - many of the important Admiral collections of the past were unable to obtain one, F-VF LH; ex. "Lindemann" (circa. 1997) **Est. 750.00+**

Of the very few examples we were able to locate, nearly all are in the light blue shade, noticeably off-center and with only about three lines of the pyramid guide visible.



- 591 ★ 117ii, 1922 10c Light Blue (Wet Printing) A fabulous Upper Right Plate 15 block of twenty, well centered, brilliant colour and impression on fresh paper, end pairs lightly hinged, leaving sixteen stamps NH. A visually striking and most appealing plate block, VF (Unitrade cat. \$4,680) ex. C.M. Jephcott (June 1990; Lot 866) **Est. 1,250.00+**



- 592 ★ 117, 1922 10c Blue (Wet Printing) Upper Right Plate 16 block of twenty, lovely fresh colour, vertical end pairs lightly hinged leaving sixteen NH, Fine (Unitrade cat. \$1,080) ex. C.M. Jephcott (June 1990; Lot 867) **Est. 300.00+**



- 593 ★ 117, 1924 10c Blue (Wet Printing) A matching pair of Upper Right Plates 21 and 22 strips of ten, both with bright fresh colour, hinged once in right side selvedge, all stamps are NH, an attractive duo, F-VF (Unitrade cat. \$3,300) **Est. 750.00+**



- 594 ★ 118b, 1924 10c Yellow Brown Upper Left Plate 21 block of twenty in the distinctive shade, lightly hinged in selvedge and vertical end pairs leaving sixteen stamps NH (small area of glazed gum on one); the first plate issued in the bistre colour, F-VF (Unitrade cat. \$2,460) **Est. 500.00+**



595



597

- 595 ★ 119c, 1917 20c Olive Green (Wet Printing) Lower left corner block, "OTTAWA No. 5" imprint visible under Type A (80-90% strength) lathework, LH on top pair leaving lower pair NH, scarce, Fine+ 1,600.00



- 596 ★ 119c, 1917 20c Dark Olive Green (Wet Printing) Mint plate "A5" block with natural straight edge and guide arrow at left, showing full strength Type A lathework with strikingly **prominent doubling** (16mm wide) below right stamp, "No 5" imprint visible underneath lathework below centre stamp; top centre stamp LH, others NH. A very scarce plate numbered lathework piece, Fine+ (Unitrade cat. is for lathework pair with imprint and doubling) 1,600.00

Provenance: George Marler, Maresch Sale 143, September 1982; Lot 514

- 597 ★ 119c, 1924 20c Olive Green (Wet Printing) A nicely centered mint block with large margins, radiant colour and showing remarkably full strength Type D lathework, light hinge at top leaving bottom pair NH, VF 1,600.00+



- 598 ★ 119c, 1913 20c Olive Green (Wet Printing)** A selected, well centered Plate 3 strip of six, original order number "313" etched off and replaced with "351" at right, a few split perfs and hinged once in the selvage, stamps are VF NH; a rare and appealing plate multiple. (Unitrade cat. \$2,700)

Est. 750.00+

Interestingly enough the plate number "3" is clearly doubled with two side-by-side impressions visible.



- 599 ★ 119c, 1917 20c Dark Olive Green (Wet Printing)** A remarkably fresh mint Upper Right Plate 5 block of twenty, exceptional colour, quite well centered for such a large multiple, hinged in margin only, all stamps with full pristine original gum, NEVER HINGED. A most attractive block, very few strips of twenty of any plate number survived, F-VF (Unitrade cat. \$7,600)

Est. 2,000.00+



- 600 ★ 119c, 1924 20c Olive Green (Wet Printing)** Upper Right mint Plate 6 block of twenty in a shade closely resembling the elusive sage green, top right and the two straight edged stamps hinged, the other seventeen with full pristine original gum, never hinged. Possibly the largest surviving Plate 6 block, F-VF (Unitrade cat. \$6,880)

Est. 1,500.00+



- 601 ★ 122iii, 1925 \$1 Orange (Dry Printing) A brilliant fresh mint block showing four-line Pyramid Guide in the left margin, marginal crease, otherwise VF NH (Unitrade cat. \$5,250) Est. 1,000.00+



- 602 ◎ 122iii variety, 1923 \$1 Deep Orange (Wet Printing) A quite well centered block with sharp, six-line Pyramid Guide in left margin, precancelled with city-type Montreal "Style 6", additional lightly struck boxed datestamp; faint scuff at top and few split perfs strengthened by a hinge, a very rare wet printing pyramid guide block, F-VF Est. 750.00+

Unitrade catalogue value is for a fine used pyramid guide block in the common dry printing. Wet printings blocks, mint or used are virtually non-existent.



- 603 ★ **128ai, 1924 2c Deep Green (Wet Printing), Perf 8 Vertically Part Perforate Coil (Sheet Format)**
 A fresh and well centered mint block, rarely seen thus and showing much higher strength Type D lathework than we are accustomed to seeing, negligible nibbed perfs left, full original gum lightly hinged at top, VF+; ex. *Harry Lussey (June 1981; Lot 1255)* **2,500.00**



- 604 ★ **136, 1924 1c Yellow, Die I (Wet Printing), Imperforate** A selected block of six with deep colour and showing normal strength (40%) Type D inverted lathework, VF NH (Unitrade cat. \$2,200) **Est. 750.00+**
- 605 ★ **136, 1924 1c Yellow, Die I (Wet Printing), Imperforate** A choice, fresh Upper Right Plate 179 strip of twenty, seldom seen in such nice condition, VF NH (Unitrade cat. \$2,200)
Illustrated on Page 53 Est. 750.00+
- 606 ★ **137, 1924 2c Deep Green (Wet Printing)** Post office fresh Upper Left Plate 188 block of twenty, remarkably choice, a scarce large plate multiple in select quality, VF-XF NH (Unitrade cat. \$2,200)
Illustrated on Page 53 Est. 750.00+





607 ★ 138, 1924 3c Carmine, Die I Matching set of three lower margin imperforate Plates 126, 127 & 128 blocks of twelve, each displaying full, strong Type D lathework, each hinged to lightly hinged with some NH stamps; Plate 126 has light crease on left vertical pair, VF (Unitrade cat. \$2,500+ as hinged)
Est. 750.00+

THE RARE IMPERFORATE PLATE 129 – NOT REGULARLY ISSUED
WITH ONLY HALF A DOZEN KNOWN



- 608 ★ 138, 1924 3c Carmine, Die I (Dry Printing), Imperforate An impressive mint Plate 129 block of twelve from the upper right pane position, characteristic impression of the imprint, hinged on slightly trimmed margin at top as normally seen, one stamp VLH leaving eleven NH. One of only six Plate 129 multiples recorded (one is used), none larger than a plate of twelve, VF (Unitrade \$3,000 for a hinged plate block of eight) **Est. 2,500.00+**

Provenance: Harry Lussey, Maresch Sale 131, June 1981; Lot 1285
Robert A. Chaplin, Maresch Sale 223, January 1989; Lot 861



- 609 ★ 139iii, 1926 2c on 3c Carmine, Die I, One-Line Surcharge A premium quality mint block showing an unusually sharp, six-line Pyramid Guide in right margin, well centered with bright fresh colour among the nicest one can hope to find, VF+ NH **2,000.00+**



610



611

- 610 ★ 139, 1926 2c on 3c Carmine, Die I One-Line Surcharge A well centered Plate 115 block of eight, bright fresh colour, VF NH (Unitrade cat. \$1,500) Est. 500.00+
- 611 ★ 139, 1926 2c on 3c Carmine, Die I One-Line Surcharge Post office fresh Plate 116 block of eight, choice well centered with pristine original gum, VF+ NH (Unitrade cat. \$1,500) Est. 500.00+



- 612 ★ 140ii, 1926 2c on 3c Carmine, Die I Two-Line Surcharge Left and right margin blocks with sharp five-line Pyramid Guides, former with light foxing on gum and hinged mostly in the margin, latter block quite well centered with bright fresh colour and very lightly hinged. A very scarce duo, VF 1,200.00



- 613 ★ 140, 1926 2c on 3c Carmine, Die I Two-Line Surcharge Post office fresh Plate 117 block of twenty from upper left pane, bright colour and well centered, VF NH (Unitrade cat. \$1,700) Est. 500.00+

WAR TAX



- 614 ★ **MR1, 1915 1c Green War Tax** A choice, well centered Upper Right Plate 4 block of twenty, bright fresh colour, vertical end pairs LH leaving sixteen NH, an impressive large plate block in selected VF condition (Unitrade cat. \$2,080) **Est. 500.00+**



- 615 ★ **MR1, 1915 1c Green War Tax** A well centered Lower Left Plate 5 block of twenty, deep bright colour, top left stamp and straight edged stamps LH, remaining seventeen are NH. A very scarce large plate block with nearly VF centering (Unitrade cat. \$1,265+) **Est. 300.00+**



- 616 ★ **MR1, 1915 1c Green War Tax** Lower Left Plate 6 block of twenty with attractive, deep colour, vertical end pairs hinged, other sixteen NH, F-VF (Unitrade cat. \$1,220+) **Est. 400.00+**



- 617 ★ **MR1, 1915 1c Green War Tax** Upper left Plate 8 strip of ten, initial printing order number "295" etched out and engraved "3" number in place above stamp Position 10, well centered and fresh, lightly hinged in selvage and straight edged stamp leaving nine stamps VF NH (Unitrade cat. \$1,120)

Est. 200.00+



- 618 ★ **MR2, 1915 2c Carmine War Tax** A matching pair of Lower Right Plate 7 and Plate 8 blocks of twenty, well centered, end pairs hinged; latter block with small gum thin on top corner stamps. Both blocks with sixteen stamps NH, F-VF (Unitrade cat. \$2,440)

Est. 500.00+

Eastern Auctions Ltd.

In our Mail Auction, we offer about 2000 individually described and profusely illustrated lots approximately every six weeks. There is NO BUYER'S COMMISSION. We make every effort to present material for every collecting interest and budget. Large lots and individual stamps from worldwide countries and areas are always offered. Contact us to receive a complimentary catalogue of our next Mail Sale.

Toll Free in North America
1(800) 667-8267

P.O. Box 250 - Bathurst - New Brunswick - E2A 3Z2 - Canada
Tel 1(506) 548-8986 - Fax 1(560) 546-6627
email contact@easternauctions.com - web www.easternauctions.com



A BEAUTIFUL INLAND REVENUE WAR TAX PLATE BLOCK
QUITE LIKELY THE LARGEST KNOWN ON THIS DENOMINATION



- 619 ★ **MR2Ci, 1915 20c Olive Green Inland Revenue WAR TAX Overprint in Black** An extraordinary Plate 2 block of ten, printing order number "197" at top left, nicely centered with rich colour, lower centre stamp with tiny gum thin and hinged, three others VLH leaving six NEVER HINGED. A very rare and impressive War Tax large plate block, ideal for a serious collection, VF (Unitrade cat. \$6,000) **Est. 2,000.00+**



- 620 **MR3b, MR4, 1916-1918 2c+1c Rose Red, Die I War Tax Strip of three and 2c+1c Brown, Die II single unused, each stamp with serified SPECIMEN (22.5 x 2.5mm) handstamp in black struck diagonally, former with some minor faults not visible from front. Unusual duo, F-VF Est. 300.00+**



- 621 **★ MR3, 1915 2c+1c Carmine, Die I War Tax Plate 1 and Plate 2 strips of ten, lower right and lower left position respectively, both with lovely fresh, rich colour, end stamps hinged, leaving eight NH in each; penciled date of acquisition from Post Office by pioneer collector Major K. Hamilton White, VF (Unitrade cat. \$3,120) Est. 600.00+**



- 622 **★ MR3, 1916 2c+1c Carmine, Die I War Tax Upper Left Plate 5 block of twenty, nicely centered and in a bright shade, hinged in selvage and straight edged stamps, other eighteen are NH. A beautiful plate multiple, VF (Unitrade cat. \$1,950) Est. 500.00+**

- 623 **★ MR3a, 1916 2c+1c Deep Carmine, Die II War Tax Upper Left mint Plate 15 block of twenty of the scarcer die displaying characteristic deep colour, upper left stamp and straight edged stamps hinged, surface abrasion on pos. 10, seventeen stamps are NH. Some split perfs and lightened pencil number in selvage. A rare Die II plate block; only a few exist from either Plate (15 or 16), Fine+ (Unitrade cat. \$5,500+) Illustrated on Page 61 Est. 1,500.00+**



Lot 623 (100% actual size)



A RARE AND ATTRACTIVE DUO
OF PLATE 1 AND 2 IMPERFORATE BLOCKS



- 624 ★ **MR4b, 1915 2c+1c Dark Yellowish Brown, Die I War Tax A** a very rare imperforate plate block showing full Plate 1 inscription in top margin, ungummed as issued, VF; ex. *C.M. Jephcott (private sale, circa. 1980s)* **Est. 1,000.00+**



- 625 ★ **MR4b, 1915 2c+1c Yellowish Brown, Die I War Tax A** a very rare imperforate plate block showing full Plate 2 inscription in top margin, ungummed as issued, VF; ex. *C.M. Jephcott (private sale, circa. 1980s)* **Est. 1,000.00+**

AN EXCEPTIONAL IMPERFORATE WAR TAX
PLATE IMPRINT MULTIPLE FROM THE MUCH SCARCE DIE II



626 ★ **MR4c, 1916 2c+1c Deep Brown, Die II War Tax** A spectacular top left corner margin imperforate Plate 17 strip of four from the much scarcer die, in the characteristic deeper shade. This plate multiple originates from the UNIQUE imperforate Die II sheet; immaterial crease entirely confined to margins, ungummed as issued, VF (Unitrade \$6,000 as two pairs) **Est. 5,000.00+**

A UNIQUE IMPERFORATE WAR TAX PLATE MULTIPLE THAT ONCE GRACED THE IMPORTANT JEPHCOTT COLLECTION. AN ABSOLUTE SHOWPIECE.



**A SPECTACULAR DUO OF PART PERFORATE
PLATE 3 AND PLATE 4 IMPRINT BLOCKS
VERY RARE AND MOST DESIRABLE**



- 627 ★ **MR4ii, 1916 2c+1c Yellow Brown, Die I Wax Tax** Top left corner margin plate block of eight imperforate vertically with complete Plate 3 inscription, characteristic centering for this part-perforate issue and very rare as a plate block, F-VF; ex. *C.M. Jephcott (private sale circa. 1980s)* **Est. 2,500.00+**

The 2c+1c brown War Tax stamps from Plate 3 and 4 were never issued as a regular perforated stamps. These part perforate stamps were prepared from sheets printed from plates designated for the coil issue.



- 628 ★ **MR4ii, 1916 2c+1c Dark Yellowish Brown, Die I War Tax** Top left corner plate block of eight imperforate vertically with complete Plate 4 inscriptions, wrinkling at top edge of the selvage and some light foxing mainly visible from the back; characteristic centering for this part-perforate issue and very rare as a plate block, F-VF; ex. *C.M. Jephcott (private sale circa. 1980s)* **Est. 2,000.00+**

AN IMPRESSIVE MINT NEVER HINGED WAR TAX BLOCK
WITH TYPE B INVERTED LATHEWORK
ONE OF THE GREAT RARITIES OF THE ADMIRAL ISSUE



- 629 ★ **MR4, 1917 2c+1c Dark Brown, Die II War Tax** A spectacular mint block from the lower right corner of the sheet, displaying the rare Type B INVERTED lathework - a superb, full strength impression with part of guide arrow at right, nicely centered, natural gum inclusion on lower left stamp, NEVER HINGED. A very rare lathework block, VF NH **10,500.00**

A little over a dozen MR4 with Type B inverted lathework items have been accounted for. Most are singles or pairs, making this block very rare indeed.



A SCARCE TRIO OF PLATE NUMBERED – LATHEWORK STRIPS

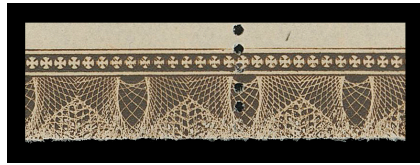


- 630 ★ MR4, 1916 2c+1c Brown, Die II War Tax** A fresh, well centered lower right strip of ten, "A35" imprint below Position 91 and strong, full Type A lathework on others, the imprint "OTTAWA No A35" and printing order "937M" are visible under the lathework at Positions 92, 93 and 99; also **prominent DOUBLE lathework** (15mm wide) below Position 94. Perfs severed between seventh & eighth stamps strengthened by hinges, end stamps LH leaving six lathework stamps including the key double NH, penciled "28 May 17" date of acquisition, VF (Unitrade cat. \$6,960)

Illustrated on Page 67 Est. 1,500.00+

Provenance: George Marler, Maresch Sale 143, September 1982; Lot 732

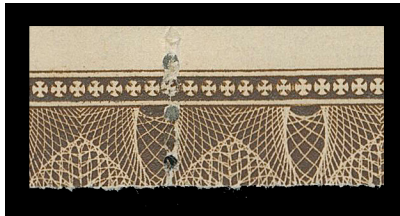
Unknown provenance, Maresch Sale 250, December 1990; Lot 1045



- 631 ★ MR4, 1916 2c+1c Brown, Die II War Tax** A selected, well centered lower right strip of ten, "36" imprint below Position 91 and strong, full Type A lathework on others, **prominent DOUBLE lathework** varieties - 7mm below Position 94 and 21mm wide (very unusual) below Positions 98-99. Left stamp LH leaving all lathework stamps NH, VF (Unitrade cat. \$5,940)

Illustrated on Page 67 Est. 1,500.00+

Provenance: Unknown provenance, Maresch Sale 250, December 1990; Lot 1046



- 632 ★ MR4, 1917 2c+1 Brown, Die II War Tax** Well centered strip of ten from lower right corner, natural straight edge, "A37 / 937N" imprint and printing order shown below Position 100; displaying strong, full Type A lathework on others, **DOUBLE lathework** (12mm wide) shown below Positions 96 & 97. Perfs severed between seventh & eighth stamps strengthened by hinges, left pair and right stamp hinged leaving five lathework stamps NH, VF (Unitrade cat. \$3,520) *Illustrated on Page 67 Est. 1,000.00+*



632



631



630

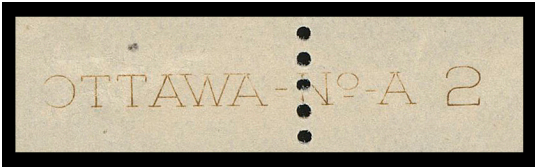


Lot 633 (95% of actual size)

A MAGNIFICENT WAR TAX PLATE STRIP FROM THE ELUSIVE DIE I
UNUSUALLY CHOICE, WELL CENTERED AND BRILLIANT FRESH



- 633 ★ **MR4a, 1915 2c+1c Deep Yellowish Brown, Die I War Tax** An extraordinary mint Plate 2 block of twenty from the lower left position with printing order number "937A" below Position 99. The scarcer die remarkably displaying superior centering, the two vertical end pairs hinged, small gum thin on Pos. 96, light pencil number in selvage. FIFTEEN STAMPS ARE NEVER HINGED, mostly with VF centering. An immensely rare plate block, only a block of four and strip of three of Plate 2 have been reported. A wonderful exhibit-caliber multiple and one of the highlights of this pre-eminent Admiral collection, VF (Unitrade cat. \$75,000) **Est. 15,000.00+**



detail of plate imprint



634 ★ MR4, 1916 2c+1c Brown, Die II War Tax A select Lower Right mint Plate 22 block of twenty, fabulous colour on fresh paper, unusually well centered for such a large block, vertical end pairs hinged leaving sixteen NH, VF and attractive (Unitrade cat. \$2,080) **Est. 600.00+**



635 ★ MR4, 1916 2c+1c Brown, Die II War Tax Upper Right mint Plate 23 block of twenty well centered, brilliant fresh colour, light pencil number in margin, end pairs hinged leaving other sixteen NH, VF (Unitrade cat. \$2,080) **Est. 500.00+**



636 ★ MR4, i, 1916 2c+1c Admiral Die II, War Tax Mint Plate 27 yellow brown and Plate 28 deep brown strips of ten, lower left and lower right positions respectively. Both well centered, end stamps hinged leaving eight NH in each, VF (Unitrade cat. \$2,080) **Est. 500.00+**



- 637 ★ **MR4i, 1917 2c+1c Yellow Brown, Die II War Tax** Upper Right mint Plate 29 block of twenty with brilliant fresh colour, lower stamp at each end hinged, the other eighteen NH. A very scarce plate multiple, F-VF (Unitrade cat. \$1,310) **Est. 300.00+**



- 638 ★ **MR4, 1917 2c+1c Dark Brown, Die II War Tax** A choice, well centered Upper Left mint Plate 42 strip of ten, rich colour, hinged in selvedge and right-hand pair, other eight stamps NH, VF (Unitrade cat. \$1,040) **Est. 250.00+**



- 639 ★ **MR4, i, 1917 2c+1c Admiral, Die II War Tax** A matching trio of upper left plate strips of ten with consecutive plate numbers - Upper Left Plate 46 in deep yellowish brown, 47 & 48 in dark brown. Hinged on selvedge and straight edged stamp on first two, plate 48 with three stamps hinged, all others NH. Plate 46 with natural bends on two stamps; penciled date of acquisition from Post Office by pioneer collector Major K. Hamilton White, F-VF; a rare trio of plate strips (Unitrade cat. \$1,875) **Est. 350.00+**



- 640 ★ **MR7a, iii, iv, 1916 2c+1c Die I War Tax, Perf 8** Vertically Paste-up mint coil strip composed of two distinctive shade pairs, yellow brown and brown shade respectively, short perfs at left but striking, VF LH **Est. 300.00+**

END OF AUCTION
THANK YOU

THE PLACING OF A BID SHALL CONSTITUTE ACCEPTANCE OF THE CONDITIONS OF SALE

BIDDING

1. The auction is conducted in Canadian dollars. All bids are per lot, as numbered in the catalogue. Eastern Auctions Ltd. reserves the right to withdraw any lot prior to sale, to divide a lot or to group two or more.
2. The highest bidder shall prevail at one advance over the next highest bid. Should a dispute arise between bidders, the decision of the auctioneer as to the successful bidder or the re-offering or resale of the lot in dispute shall rest entirely in the judgment of the auctioneer. **On all lots sold a commission of 18.5% on the hammer price will be payable by the buyer.** The auctioneer shall regulate the bidding and reserves the right to refuse any bid believed by him not to be made in good faith.

SALES TAXES

3. Canadian residents will be charged GST or HST as appropriate for their mailing address.
U.S. and International residents are liable for GST (5%) on the buyer's premium only.

PAYMENT FOR PURCHASES

4. U.S. funds are acceptable only at the equivalent amount shown on the invoice. Visa, MasterCard and Paypal are accepted at a charge equal to 3.5% of the hammer amount. Please include the information on your bid sheet. We also accept cheques at no extra cost.
5. Payment for lots, including those on which opinions are desired under Condition of Sale 8, shall be made as follows:
A successful mail bidder will be notified of lots purchased and must remit before the lots are sent. A person known to us, or who furnishes satisfactory references, may at our option have purchases forwarded for immediate payment. Delivery will be to the address on the bid sheet. Proof by receipt of sending at the advised address shall constitute delivery. Postage and insurance are payable by the buyer.
6. Title shall not pass to the buyer until Eastern Auctions Ltd has received full payment.
7. Buyers agree to pay for lots as specified above and no credit is extended, a late payment charge of 2% per month is added to overdue payments, minimum \$5.00.

QUALITY AND AUTHENTICITY

8. Each lot is sold as genuine and correctly described based on individual description as modified by any specific notations in this catalogue including (but not restricted to) "Key to Cataloguing".
 - (a) **QUALITY.** Any lot, description of which is incorrect, is returnable within forty-five days from closing date of auction. If the opinion of a mutually acceptable authority is desired, this period will be extended as noted in Condition 8. All disputed lots must be returned intact in the condition received. Photographed lots are not returnable on account of centering or perforations. Lots containing more than twenty stamps, described "as is", or described as having faults are not returnable for any reason. Bidders who have had an opportunity to examine the lots prior to the sale may not return the lots.
 - (b) **AUTHENTICITY.** Any lot, which is declared other than genuine by a mutually acceptable authority is returnable, provided the lot is received within a period of four weeks from the date of the auction. Proof that a "mutually acceptable authority" declines to express an opinion is not normally grounds for the return of a lot.
 - (c) Returns must be made by registered mail.
 - (d) Lots marked or encapsulated by an expert committee are not returnable for any reason.
 - (e) Lots accompanied by an existing certificate are not returnable.



EXTENSION OF TIME

9. When an opinion from an acceptable authority is necessary the buyer must request an extension from Eastern Auctions Ltd. prior to the auction. The buyer must pay for the lot in full (a refund will be issued in the event of an unfavourable opinion). Eastern Auctions Ltd. will then submit the lot on the buyer's behalf to one of the following:

- Vincent Greene Foundation (Canada and BNA)
- Philatelic Foundation (USA)
- BPA or RPSL (British Commonwealth)
- Sergio Sismondo (World except USA)

EXPENSES OF CERTIFICATION

10. Expenses shall be borne by the buyer except where the lot is other than as described and is returned within the conditions set forth above. Our responsibility is expressly limited to:

- (a) The actual cost of the opinion if up to \$50.00 or less, or
- (b) The cost of the opinion up to 5% of the sale price but not exceeding a maximum of \$100.00.
- (c) We are not responsible for expenses on the return of any lot.

This firm is a subscriber to the ASDA Code of Ethics for Auction firms.

KEY TO CATALOGUING

SYMBOLS & MAJOR ABBREVIATIONS

★	Mint	⊙	Used	E	Essay
☒	Cover	(/)	Incomplete Set	F	Forgery
(-)	Complete Set	R	Reprint	P	Proof
♦	Graded Stamp	CDS	Circular Date Stamp	L	Literature

CONDITION

The various grading of stamps are in order; **Extremely Fine; Very Fine; Fine and Very Good.** In the case of sets, large blocks, sheets, etc., the condition quoted represents the average and quality above and below this standard can be expected. Minor perf separation can be expected on larger multiples.

Mixed condition: in large lots, a range of condition can be expected, from small faults to Very Fine.

GUM

NH	Never Hinged – with full original gum in Post Office state and unmounted.
LH	Lightly Hinged – with full original gum showing some evidence of a previous hinge.
OG	Original gum – showing some evidence of a previous hinge, a portion of which may still be present.
Part OG	Part original gum.
Unused	Unused without original gum, or regummed.
Ungummed	Without gum as issued.

A NOTE ON HINGING

Bidders are reminded that, in accordance with industry standards, hinging is not described with respect to used stamps or stamps and proofs that were printed without gum. Hinging on these items is irrelevant to their condition and value. If hinging is important to you in such cases, please contact us before bidding and request further information. **We will not accept the return of used stamps or ungummed items due to hinging.**

Hinging on mint stamps is always disclosed, however, never hinged status should not be expected unless specifically stated “never hinged” or “NH”.

ESTIMATED VALUES

If an estimated cash value is given, it is shown in the description and always indicated by the abbreviation “Est.”. It is used where the lot is large or where the actual value has little relation to the catalogue price. **It represents the auctioneer’s appraisal of the true CASH value of a lot and the figure is invariably close to the actual realization.** It is useless for mail bidders to list any bids that are only a low proportion of such estimates.

CATALOGUES AND HANDBOOKS USED IN LISTING

- Unitrade Specialized (2023 Edition)
- George Marler, The Admiral Issue of Canada, 1982
- Minuse and Pratt, The Essays and Proofs of British North America, 1970
- Fred Jarrett, Stamps of British North America, Quarterman Publications, 1975

BIDDING INCREMENTS

The auctioneer may regulate the bidding at his discretion. However, to assist absentee bidders in establishing their maximum bid for each lot, the increments shown below will be used in most cases. We recommend that written bids conform to these increments (those which do not will be reduced to the previous level).

BIDDING IS CONDUCTED IN THE FOLLOWING INCREMENTS:

Bidding	Increments	Bidding	Increments	Bidding	Increments
\$50 - \$100	\$5.00	\$1,600 - \$3,000	\$100.00	\$16,000 - \$30,000	\$1,000.00
\$110 - \$300	\$10.00	\$3,250 - \$7,500	\$250.00	\$32,500 - \$75,000	\$2,500.00
\$325 - \$750	\$25.00	\$8,000 - \$15,000	\$500.00	\$80,000 - OVER	\$5,000.00
\$800 - \$1,500	\$50.00				



To participate in our public auctions, we invite everyone to visit our website at easternauctions.com/auctions. To create an account, complete the required fields, read and accept the terms and conditions, before clicking create account. Once completed, you will receive an approval email and you will need to follow the email instructions. For further help, contact us via email or by clicking the chat box located at the bottom left on your computer screen.

TELEPHONE BIDS

Bids may be placed during office hours Monday to Friday from 8:00 AM to 5:00 PM Atlantic Standard Time by dialing 1 (506) 548-8986 or toll free in North America 1 (800) 667-8267. Bids may also be placed during the viewing sessions only. ***Please note all telephone bids must be confirmed by mail, email or fax.***

FAXING OR E-MAILING YOUR BIDS

You can fax your bids 1 (506) 546-6627 or toll free in North America 1 (888) 867-8267.
Email address: **bids@easternauctions.com**

BIDDING BY MAIL

If you wish to mail your bid sheet, please allow at least two weeks for delivery. We often receive mail bids after the auction closing. These bids are unfortunately nullified. Bidders are urged to phone in their bids and then mail in their confirmation.

WEB SITE

You can view this auction on our website **www.easternauctions.com** under eastern@home. For your convenience, we have pictured almost every lot to facilitate your bidding. This will nicely compliment the catalogue due to constraints presented by a printed format.

AUCTION AGENTS

We are pleased to recommend the following agents:

Mr. J-Claude Michaud

P.O Box 31248 • Halifax • Nova Scotia • B3K 5Y1 • Canada
Tel: 1 (902) 443-5912 • Fax: 1 (902) 445-5795
Cell: 1 (902) 456-0950
Email: jcm.pha@gmail.com or jcm.ph@ns.sympatico.ca

Mr. Nick Martin

2 Field View • Ashton Road • Siddington • Cirencester
Gloucestershire • GL7 6HB • United Kingdom
Telephone 01285 653714
Mobile: 07703 766477
Email: nick@loveauctions.co.uk
Website: www.loveauctions.co.uk

Mr. Charles Cwiakala

1527 S. Fairview Avenue • Park Ridge • IL • 60068 • USA
Phone or Fax: 1 (847) 823-8747
Email: cecwiakala@aol.com

Mr. Frank Mandel

P.O. Box 157 • New York • NY • 10014-0157 • USA
Tel: 1 (212) 675-0819 - Fax: 1 (212) 366-6462
Email: busybird1@me.com

