

**Public
Auction**

Eastern Auctions Ltd.



British North America

Gary J. Lyon
Licensed & Bonded Auctioneer

**June 6th
2009**



"Blue-winged Teals"

*by John Wiseman
private collection*

1993, watercolour 21" x 29"

Limited Edition Gicleé prints using archival quality inks
and paper are available.

La Maisonart John Wiseman Gallery & Studio

826 Highway 132, Anse à Beaufils

Percé, Québec, G0C 2L0, Canada

Tel/Fax: 1(418) 782-2047

Email: maisonart@globetrotter.net - website: www.johnwiseman.net



Eastern Auctions Ltd.

P.O. Box 250, Bathurst, New Brunswick, E2A 3Z2, Canada

Tel: 1 (506) 548-8986 • Fax: 1 (506) 546-6627

Toll Free Tel: 1 (800) 667-8267 • Fax: 1 (888) 867-8267

E-Mail: easternauctions@nb.aibn.com

Web Site: www.easternauctions.com

PUBLIC AUCTION BID SHEET

Sale Date: June 6th, 2009

Please buy the following lots for me at prices not exceeding those shown. I have read the conditions of sale at the end of the catalogue and understand the 15% buyer's premium.

Signature: _____

Customer #: _____

Name: _____

Address: _____ City: _____

Province/State: _____ Postal/Zip Code: _____

Country: _____

Telephone: _____ Fax: _____

E-Mail: _____

Credit Card Payment

☐ Please charge my purchases to my credit card.



Card #: _____ Exp Date: _____

Cardholder's Name (as it appears on card): _____

Billing Address if different from address printed above:

Signature: _____

References (First time bidders only): _____

☐ Please tick this box if you are bidding in US Dollars:

If necessary to secure a lot, you may raise my bids by:

10% ☐ 20% ☐

☐ YES! I wish to subscribe to a full year of Catalogues and Prices Realized Reports for both Mail & Public Auctions.

Please find my ☐cheque ☐credit card number enclosed for my one-year subscription fee of CDN \$35.00 for Canadian residents, USD \$35.00 for United States residents and USD \$50.00 for overseas residents.

Bidding is conducted in the following increments:
(Uneven bids will be rounded downwards)

<i>\$10 - \$50.....</i>	<i>\$2.00</i>	<i>\$325 - \$750.....</i>	<i>\$25.00</i>	<i>\$3,250 - \$7,500.....</i>	<i>\$250.00</i>
<i>\$55 - \$130.....</i>	<i>\$5.00</i>	<i>\$800 - \$1,500.....</i>	<i>\$50.00</i>	<i>\$8,000 - \$20,000.....</i>	<i>\$500.00</i>
<i>\$140 - \$300.....</i>	<i>\$10.00</i>	<i>\$1,600 - \$3,000.....</i>	<i>\$100.00</i>	<i>\$21,000 - OVER.....</i>	<i>\$1,000.00</i>

We are not responsible for bidder errors.

Please check bids and print clearly. All bids in even dollars please.

[illegible]

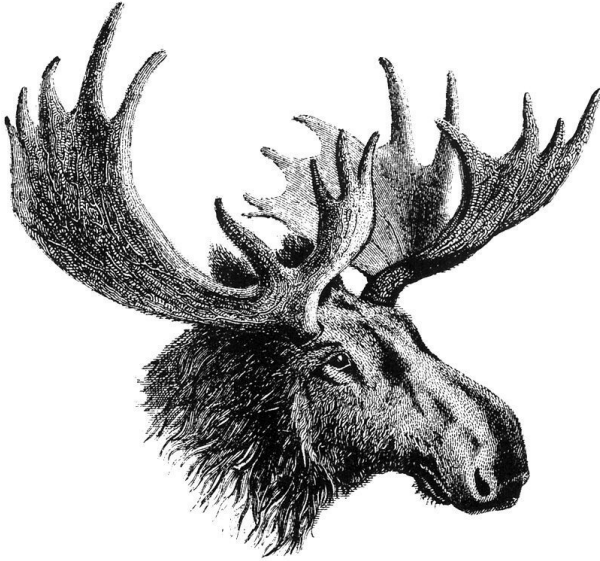
Bid early to avoid disappointment

View this sale on our Web Site: www.easternauctions.com

Please bid early to avoid disappointment. You may mail, fax, e-mail or phone in your bids. Phone bids must be confirmed in writing. Mailing your bids less than two weeks prior to the sale is not recommended.

Eastern Auctions Ltd.

PUBLIC AUCTION



June 6th, 2009
Halifax, Nova Scotia

Eastern Auctions Ltd.

P.O. Box 250, Bathurst, New Brunswick, E2A 3Z2, Canada

Tel: 1 (506) 548-8986 • Fax: 1 (506) 546-6627

E-mail: easternauctions@nb.aibn.com

Web Site: www.easternauctions.com

Copyright © 2009 – All Rights Reserved

AUCTION INFORMATION

For assistance and further information
please contact:

SPECIALISTS IN STAMPS:

Gary Lyon
Yohann Tanguay

WEB SITE:

Luc Doucet

**CONSIGNOR SETTLEMENTS/
ACCOUNTS RECEIVABLE:**

Pamela Ross

**MAILING LISTS AND
SUBSCRIPTIONS:**

Billie-Jo Beaton

CATALOGUE EDITORS:

Luc Doucet
Yohann Tanguay
Sharon Willett

SHIPPING:

Catherine Gallagher

VENUE

The Lord Nelson Hotel & Suites

Belleisle Room 1 (Mezzanine)

1515 South Park Street

Halifax, Nova Scotia

B3J 2L2 Canada

Tel: 1 (902) 423-6331

Toll Free Tel: 1 (800) 565-2020

For Room Reservations Only

THE TERMS OF SALE AND AUCTION AGENTS
ARE LISTED AT THE BACK OF THE CATALOGUE.

Viewing Sessions

Thursday June 4th, 2009 – 9:00am to 7:00pm

Friday June 5th, 2009 – 9:00am to 12:00pm

Saturday June 6th, 2009 – 9:00am to 12:00pm

Auction Session

Saturday June 6th, 2009 – 1:30pm

Provinces And Newfoundland

Lots 1001-1078





- 1001 ★◎ PROVINCES Mint / Used Pence and Cents Oddment** Lot of 32 items which includes British Columbia six different Coat of Arms perforated forgeries; New Brunswick with used #1 (small thins but four margins), used #2 (into design on one side otherwise sound), some unused "Cents"; Nova Scotia #1 (large margins used on piece, scissor cut into design at lower right, still VF appearance), #5 (official reprint on thin hard paper), used #6 (1sh purple, pen cancelled, into design in places and thinned), #10 (mint single with OG, hinge thin; other pen cancel removed and regummed), used #13 with A97 ship cancel, etc. **Est. 750.00+**

- 1002 ★◎ PROVINCES Clean Mint / Used Stock** Many hundreds sorted in glassine envelopes starting with some used Nova Scotia "Cents", PEI Pence and Cents mint and used; followed by Canada Airmails, Special Delivery and Dues, plus some revenues; Newfoundland mint from 1919 to 1947 and used from 1932 to 1947, some postmark interest. Needs checking. *(Not Illustrated)* **Est. 300.00+**



- 1003 ◎ BRITISH COLUMBIA #2, 1860 2½p Dull Rose (Shades), No Watermark, Perf 14** Selection of five different numeral cancelled stamps, which includes grid "1" and "10" in sound condition; grid "2" (scarce), "15" (scarce) and "22" (rare), all three with small faults. Ideal lot for the cancel specialist, *ex. Dale Lichtenstein* **Est. 500.00**



X1004



X1005

- 1004 ◎ BRITISH COLUMBIA #7, 1865 3p Blue (Shades), Watermark Crown CC, Perf 14** Selection of six used stamps, most with small faults, includes grid "1", "7" (rare), "10", "15" (partial), "20" (faint but rare) and "26". **Est. 400.00**
- 1005 ◎ BRITISH COLUMBIA #8, 1867-1871 2c on 3p Brown Coat of Arms, Watermark Crown CC, Perf 14** Selection of three used examples, small faults; includes grid '1', '10' both clear strikes and light but discernible '26' (very scarce). **Est. 250.00**



- 1006 ☉** **BRITISH COLUMBIA #17, 1869 50c on 3p Violet Coat of Arms, Watermark Crown CC, Perf 12½** A scarce used example, quite well centered for this challenging stamp, bright colour and showing portion of numeral grid '35' cancel in blue from Victoria, Vancouver Island, F-VF, 1997 Greene Foundation cert. **Est. 1,000.00**



- 1007 P** **NEW BRUNSWICK #6-11, 1860 1c-17c "Cents" Issue** Complete set of six plate proof singles, each printed in colour of issue except for the 1c (dark violet), all on card mounted india paper, choice VF **Est. 300.00**



- 1008 P** **NEW BRUNSWICK #7, 2c Queen Victoria** Trial colour die proof engraved in black on india, mounted on card, measuring 34 x 37mm, rare and ideal for exhibition, VF, 2009 Greene Foundation cert. **Est. 750.00+**

- 1009 F** **NEW BRUNSWICK #8, 9, Lithographed Spiro Forgeries** Lot of four items; 5c yellow green, 10c vermilion (two shades) and British Columbia 3p light blue; all with added cancels, some faults but uncommonly seen. *(Not Illustrated)* **Est. 60.00**

Call us toll free in North America
Dial 1(800) 667-8267
or
Fax us 1(888) 867-8267



NOVA SCOTIA STAMPLESS COVERS



- 1010** **PRE-ADHESIVE PERIOD CANCELLATION / POSTMARKS** Interesting lot of eleven stampless covers and three covers franked with stamps. All neatly displayed on pages with write-up and illustrations of cancellation and / or postmark. Starts with unframed straightline "HALIFAX / AUG 18 1800" (very scarce) and large circular "POST PAID" (less than ten recorded at Halifax) on 4½ rated cover to Windsor, Nova Scotia, ex. Mayer; "Ship Letter / HALIFAX" Crown double oval cancel (rare) and straightline "SHIP LETTER" on 3/4 rated cover to London, received (DE 18 1820); Halifax to Cape Breton with "HALIFAX.N.S. / PAID (JU 24 28) - "2" reversed, inverted year date indicia", rated "1/6", ex. Mayer; HALIFAX (OC 14 1835) early circular postmark to Prince Edward Island; incoming mail from Puerto Rico to Halifax with GB 4p vermilion tied by "C61" cancel, dispatch CDS alongside (AP 25 77) and split ring receiver backstamp; Tombstone (JUL 18 1850) paid handstamp in red to New York; also similar postmark than previous but smaller size (sans serif; very scarce) from Truro to Halifax, dated March 9, 1852, ex. J.J. Macdonald; "ON POST OFFICE BUSINESS / FREE" double split ring cancellation on OHMS GPO envelope from Halifax to Truro with enclosure signed Arthur Woodgate, etc. An appealing and clean lot with some very scarce markings, ideal for the postal history collector, F-VF

Est. 1,500.00+



- 1011 ☒ **Cape Breton Stampless Collection** Includes 30 folded covers, many with letter enclosed ranging from 1839 to 1851, to and from Cape Breton, showing range of postal markings, dispatch and receiver datestamps, etc. Also seven 3c Small Queen franked covers (1873-1879) mailed and delivered within Cape Breton. Condition is varies from mixed to very fine and offers a wonderful opportunity for the postal historian. **Est. 750.00+**

NOVA SCOTIA

MULTIPLE THREE PENCE REGISTERED FRANKING



- 1012 ☒ **#2, 1858 (December 20)** Folded cover with manuscript "Registered Letter" from Guysborough to Halifax, with 3p dark blue on white wove paper, single with clear to large margins (slight filing crease) and a pair, into design at one side to large margins, tied by oval grid cancels, clear double arc dispatch datestamp and arrival (DE 22) backstamps, small cover tear away from stamps at top, a very rare registered cover paid with Three pence stamps - only six covers reported, F-VF, 2008 Greene Foundation cert. ex. *Nicholas Argenti* **Est. 2,000.00+**



RARE TRIPLE DOMESTIC RATE COVER



- 1013 #3, 1857 (September 16) Folded cover mailed from Bridgewater to La Have, franked with three single 3p dark blue on blue paper, mostly clear to large margins and tied by oval grid cancellations in black; paying the triple domestic letter rate, clear "BRIDGWATER SP 16 1857" double arc dispatch on reverse. A rare rate and only five covers have been reported showing this franking and rate combination, F-VF, 2008 Greene Foundation cert. ex. Carnegie, Mayer, Wilkinson **Est. 1,500.00**

CLEAN AND FRESH SIX PENCE YELLOW GREEN COVER



- 1014 #4, 1857 (November 9) Clean envelope mailed from Annapolis to Boston, franked with a single 6p yellow green, just touching on one side, extra large margins on other sides, lovely fresh colour and lightly tied by oval grid, neat transborder circular PAID 10 handstamp in red, clear dispatch in black and St. John (NO 10) transit backstamp - a nice and unusually fresh cover paying the single rate to USA, F-VF **Est. 2,000.00**

1857 SIX PENCE DARK GREEN HERALDIC UNUSED



- 1015 ★ #5, 1857 6p Dark Green on Blue Paper An impressive unused example showing well clear to adequate margins all around, clear impression and with lovely fresh colour, negligible corner crease at left, insignificant for this rare stamp, VF, 1995 Greene Foundation cert. **12,500.00**

A VERY FINE EXAMPLE OF THE 1857 SIX-PENCE DARK GREEN - AMONG THE NICEST WE HAVE SEEN AND EASILY RANKS AMONG THE TOUGHEST BRITISH NORTH AMERICA CLASSIC PENCE ISSUES TO FIND IN UNUSED CONDITION.



- 1016 ☉ #5, 1857 6p Deep Green on Blue Wove Paper A remarkable used example of this notoriously difficult stamp, unusually rich colour and deep impression on fresh paper, full to large margins all around and light unobtrusive grid cancellation in black. A beautiful stamp that is rare in such nice quality, VF, 2009 Greene Foundation cert. **2,500.00**



- 1017 ★ #8c, 1860-1863 1c Black on White Paper Unusually well centered horizontal pair, imperforate vertically, showing portion of imprint in oversize margin at top, fresh and with full original gum, very lightly hinged, choice, VF **400.00**



- 1018 P** #10P-13P, 5c-12½c Queen Victoria "Cents" Issue Lot of four different plate proof pairs in issued colour on card mounted india paper; 5c and 12½c with tiny scissor cut between stamps at foot, latter touching stamp at right, otherwise F-VF group *(Not Illustrated)* **440.00**



- 1019 ★** #12i, 1860-1863 10c Vermilion on White Wove Paper Well centered plate imprint vertical mint pair from the lower right sheet corner (Position 90 & 100), with HORIZONTAL STITCH WATERMARK on top stamp, full original gum with watermark variety never hinged (unpriced as NH in Unitrade). A scarce and appealing multiple for the specialist, VF, photocopy of 2004 Greene Foundation cert. of a lower right block of twelve from which it originates. **Est. 400.00+**

PRINCE EDWARD ISLAND



- 1020 ★** #9vii, 1868-1870 4p Black on White Wove Paper, Perf 11½-12 Quite well centered gutter strip of four, ungummed, vertical fold in gutter margin as always, VF and rare **1,000.00+**



- 1021 ◎** 1872 Cents Issue Cancellations A clean lot displayed in black mounts on three exhibit quadrille pages, including 1c (13) 2c, 3c (17; two stamps showing dot between PRINCE EDWARD), 4c (6), 6c (5), 12c (4). Showing a nice range of different postmarks and fancy cancels used during period. Some shades and perforations varieties noted (i.e. compound perfs), some flaws to be expected, but an interesting and difficult lot to assemble. Fine to Very Fine centering. **Est. 250.00+**

NEWFOUNDLAND
PENCE



- 1022 #4, 1857 4p Scarlet Vermilion on Thick Porous White Wove with Mesh An impressive used example, well clear at top to extra large margins on other three sides, deep impression and colour on fresh paper, showing an unusual and large portion of "10" rate handstamp in black along with light oval grid cancellation. A very scarce used classic stamp with eye-appeal, VF, 1987 Greene Foundation cert. **5,000.00**



1023



1025



1024

- 1023 ★ #8, 1857 8p Scarlet Vermilion Large margined mint example with lovely fresh colour and clear impression, full original gum, choice, VF LH **750.00**
- 1024 ★ #21i, 1861-1862 6½p Rose, Watermarked Lower left sheet corner mint block of four, showing two-line "CEY W / 1858" of "STACEY WISE / 1858" papermaker's watermark on all four stamps, fresh and with full original gum, stamps are never hinged, hinged in selvage only, VF **1,200.00**
- 1025 ★ #22, 1861-1862 8p Rose on Thin Hard Paper A choice and bright fresh mint single with large margins and full pristine original gum, XF NH **200.00+**



CENTS



- 1026 P** #24-31, 1865-1894 2c-24c "Cents" Issue Complete set of the six different denominations, each as a plate proof single on india paper; 13c is a trial colour in dark red violet, others in issued colours; 12c and 13c are on card, VF **Est. 400.00**



1027



1028



1029

- 1027 P** #24, 2c Codfish ABN Trade Sample Proof engraved in yellowish green on thick bond paper (0.0045"), imperforate with large margins, colour noticeably different than the issued stamp, very scarce and appealing, VF **Est. 250.00+**

- 1028 P** #24, 2c Codfish Perforated ABN Trade Sample proof engraved in dark red on blue chemical paper, with shiny gum, some surface abrasion, a very scarce and appealing proof for the advanced collector, F-VF **Est. 200.00+**

- 1029 P** #24, 2c Codfish Perforated ABN Trade Sample proof engraved in yellow on blue chemical paper, with shiny gum, faulty at upper left corner, very scarce, Fine appearance **Est. 200.00+**



- 1030 ★** #27, 1871 10c Black Prince Albert on Stout White Wove A rare mint block of eight stamps, quite well centered for this challenging issue, lovely fresh colour and with crisp impression, top stamps are hinged leaving bottom stamps with full original gum never hinged, among the largest remaining multiples, F-VF showpiece **4,800.00**



1031



1032

- 1031

★

#30, 1865 13c Orange Ship on Thin Yellowish Wove Paper A choice mint block of four, quite well centered for this notoriously difficult stamp, lovely fresh colour and impression, with full unblemished original gum that has been never hinged, rare thus, F-VF NH

2,200.00
- 1032

P

#31, 24c Blue Queen Victoria Left sheet margin plate imprint proof block of six on india paper, choice, VF

Est. 400.00



1033



1034

- 1033

★

#40, 1876 5c Blue Harp Seal, Rouletted A superb mint example, very well centered and with lovely rich colour and sharp impression on fresh paper, possessing full pristine original gum, never hinged. A great stamp in all respects, XF NH GEM

1,050.00+
- 1034

★

#43, 1896 1c Brown Prince of Wales Post office fresh mint block of four, well centered for the issue, deep rich colour and possessing full unblemished original gum, never hinged. A rare multiple, especially in such top-quality, VF NH

2,100.00



- 1035 ★ **#48, 1887 2c Red Orange Codfish** An appealing top sheet margin plate imprint block of eight, showing full BABN Montreal imprint, lovely rich colour and deep impression on fresh paper, usual centering for the issue, possessing full pristine original gum, never hinged. F-VF NH, ex. *Sir Gawaine Baillie* **1,200.00**



1036



1037

- 1036 ★ **#48, 1887 2c Red Orange Codfish** A most attractive stamp which has rich and vivid colour, well centered and possessing full pristine original gum, never hinged. A great stamp in all respects, VF NH, 2006 Greene Foundation cert. **150.00+**
- 1037 ★ **#51, 1887 3c UMBER BROWN Victoria** A choice mint example, very well centered for the issue with deep rich colour and impression, possessing full pristine original gum, never hinged. A difficult stamp to find in such nice quality and catalogue value is irrelevant, VF NH **Est. 200.00+**



- 1038 ★ **#53, 1880 5c Pale Blue Harp Seal** A remarkable mint example, very well centered for the issue within extra wide margins, gorgeous fresh and true colour for this elusive printing, and possessing full original gum, never hinged. Rarely encountered stamp in such superior quality and easily ranks among the finest we have seen, catalogue value is irrelevant, XF NH **Est. 2,000.00+**

1897 DISCOVERY OF NEWFOUNDLAND



1039 P #61-74, 1897 1c-60c Discovery of Newfoundland Complete set of fourteen plate proof blocks of four in issued colours on card mounted india paper, all from the lower left sheet corner position. A choice and scarce set in multiples, VF-XF Est. 2,000.00+



1040 ★ #61-74, 1897 1c-60c Discovery of Newfoundland A gorgeous fresh and complete mint set of fourteen in blocks of four, each stamp with diagonal SPECIMEN overprint in carmine, quite well centered, fresh colours and with full original gum, never hinged. A very scarce SPECIMEN set in multiples – a few remaining as most were broken into singles, VF NH 6,000.00



1041



1042

- 1041 ★ #76, 76i, 1897 (October) 1c on 3c Grey Lilac Provisional Surcharge** Remarkably well centered mint horizontal pair (Position 41 and 42 from the setting of fifty), left stamp showing the elusive Type B surcharge with wide (2mm) spacing and right-hand stamp with Type B surcharge, former only comes once in the setting; full original gum, lightly hinged. A rare se-tenant pair in premium condition, XF LH **Est. 1,000.00+**

- 1042 ★ #77, 1897 (October) 1c on 3c Grey Lilac Provisional Surcharge (Type C)** A remarkable mint example from the lower right sheet corner (Position 50 in the setting of fifty subjects), fresh colour and impression, full original gum, lightly hinged in bottom sheet margin, leaving stamp never hinged. A very scarce sheet margined stamp with the scarce surcharge type, F-VF NH **1,775.00**



- 1043 ★ #78-86, 1897-1908 ½c-5c Royal Family and Map of Newfoundland** Mint set of nine singles, plus extra shades of the 1c green and 3c, all with security punch and SPECIMEN overprint applied by American Bank Note Company, all stamps fresh and with full original gum, F-VF NH, less than 100 sets exist **Est. 400.00**



- 1044 ★ #80, 1898 1c Yellow Green Victoria Royal Family** Upper sheet margin strip of twenty stamps showing the ABN record handstamp at upper right, security punch and small SPECIMEN overprints. One of two known strips of printing order Number 4 (October 1902), two stamps hinged, others never hinged, VF, ex. ABNC Archives **Est. 500.00**



1045 ★ #102, 1911 12c Red Brown King Edward VII A choice and very well centered mint example with fresh colour and full original gum, XF NH 200.00+



1046 ★ #124, 1919 15c Dark Blue Caribou, Perf 14x13.9 Very well centered mint block of four, rich colour and with full pristine original gum, seldom seen so nice, VF NH 420.00



1048



1047 ★ #131b/142a, 1923-1924 1c/15c Pictorial Issue Mint set of eleven imperforate pairs (missing only the 3c brown to complete set), all with full to large margins; the 2c with full original gum, never hinged, all other values ungummed as issued. A nice and fresh set, VF 2,825.00

1048 ★ #183a + variety, 1932-1937 1c Green Codfish (Perkins Bacon), Line Perf 13 Mint pair showing horizontal gutter margin and originating from the booklet sheet, attractive, VF NH Est. 250.00



1049 P #191, 257, 1932-1937 5c Caribou Selection of nine different plate proof pairs, eight are from Perkins Bacon printing, of which two are on "bookend" security paper showing the moiré lines and one is Waterlow printing (creased). Only 50 sets exist, VF, ideal for exhibition, ex. K. Bileski Est. 750.00



1050 ★ #191c, 1932 5c Deep Violet Caribou, Die II (Perkins Bacon Printing), Perf 13½ Horizontal mint pair, imperforate vertically between, fresh and F-VF NH **350.00**



1051 ★ #233ai, 1937 1c Grey Black Codfish, Comb Perf 13.3x13.3 Upper left sheet corner mint block of nine showing Fishhook plate variety (Position 23) and Re-entry (Position 11), F-VF NH **Est. 200.00**



1052 ★ #245a-248a, 1938 2c-7c Royal Family Issue (Perkins Bacon Printing) Complete mint set of four imperforate mint pairs, all with fresh colours and full to large margins, full original gum, a choice set, VF NH **900.00**



- 1053 P #247, 1938 4c Princess Elizabeth An imperforate pair on un gummed watermark stamp paper plus six different imperforate plate proof pairs, three of which are on bookend security paper showing the moiré lines, attractive and VF lot Est. 750.00



- 1054 ★ #255 + variety, 1941-1944 3c Rose Carmine Queen Elizabeth (Waterlow Printing) Left sheet margin horizontal mint pair, showing a major perforation shift (5mm to right), appealing, Mint NH Est. 150.00

AIR POST



- 1055 ☒ #C2a, 1919 (June 14) Handley-Page Flight. Ralph W. Strong business corner envelope with content, franked with a well centered single \$1 on 15c scarlet (without comma after "POST") tied by usual small cork cancel and mailed from Harbour Grace with clear (JU 14 19) CDS postmark, addressed to England, showing the Atlantic Aerial Mail / Handley-Page oval cachet (JUN 14 1919) handstamp in black on reverse. Only 56 regular commercial mail covers were carried from Harbour Grace, fewer received the special black cachet, very scarce thus, especially in choice condition. A great cover for the advanced collector, VF, 1983 Enzo Diena cert. Est. 2,000.00+



- 1056** ☒ #C2a, Handley-Page Flight 1919 (June 14) Munn & Co. and "Flag" business corner envelope, franked with \$1 on 15c scarlet without comma after "POST", tied by distinctive small cork cancel and mailed from Harbour Grace with (JU 14 19) CDS postmark alongside, addressed to London, showing neat Atlantic Aerial Mail / Handley-Page oval cachet (JUN 14 1919) handstamp in black on reverse, some minor cover flaws along left edge of the cover. A total of 119 pieces were carried from Harbour Grace of which 56 were regular commercial mail, and fewer received the special black cachet, a very scarce and appealing cover, VF

Est. 2,000.00



1057



-X1060-



- 1057** ★ #C3, 1921 (November 7) 35c Halifax Airmail Mint single with wide spacing (2¼mm) and no period after "1921", post office fresh colour, well centered and with full original gum. A nice stamp, VF NH

400.00



- 1058 ★ #C3, C3b, C3d, C3j, 1921 (November 7) 35c Halifax Airmail Exceptionally well centered and fresh mint block of four (Position 4 - 5 / 9 - 10 in the setting of 25), showing the scarcest positional stamps at top, each with only one per sheet; (UL) wide spacing with "1" under "f", (UR) narrow spacing with "1" under "f", (LL) wide spacing and no period after "1921", (LR) wide spacing and with period after "1921"; with full pristine original gum, never hinged. A very scarce positional multiple, especially in premium condition, XF NH **4,050.00**



- 1059 ★ #C3 to C3j, 1921 (November 7) 35c Halifax Airmail Flight Overprint Complete mint sheet of twenty-five stamps, reasonably to well centered, fresh colour, showing the six possible overprint varieties, full original gum previously hinged only in the corner stamps, remaining 21 stamps are never hinged; some tone spots on Position 6, 15 and 20, some light gum blemishes in places and folded between third and fourth row, a very scarce intact airmail sheet of which only a few still exist, F-VF **9,920.00**
- 1060 E 1922 (November 27) 15c Vickers Vimy Airmail Essay Set of two on wove paper, perf 14½x13½, without gum as issued and both with sheet margin at foot; also an embossed forgery of the essay in green and red orange, gummed. A scarce duo, VF *(Illustrated on Page 20)* **Est. 300.00**



DE PINEDO FLIGHT OVERPRINT



- 1061** ☉ **#C4, 1927 (May 18) 60c Black Henri VII De Pinedo Flight** Well centered used example with three-line "Air Mail / DE PINEDO / 1927" overprint in red, used with characteristic wavy-line cancellation in black from St. John's, Very Fine **25,000.00**

Expertization: 1999 Greene Foundation certificate

A HIGHLY DESIRABLE AND SOUGHT-AFTER WORLD AIRMAIL RARITY IN PREMIUM CONDITION.

COLUMBIA FLIGHT SURCHARGE



- 1062** ★ **#C5, 1930 50c on 36c Olive Green "Columbia" Flight** A remarkable mint example of this sought-after airmail stamp, unusually well centered for the issue, deep rich colour and unusually strong impression of the overprint, position 4 from the setting, full original gum, lightly hinged, Sanabria guarantee handstamp, VF LH. **12,000.00**

Expertization: 2009 Greene Foundation certificate

A EXTREMELY FINE STAMP WITH SUPERIOR CENTERING WHICH IS RARELY SEEN ON THIS STAMP - ONLY 300 WERE PRINTED. IT IS BELIEVED THAT FEWER THAN 200 EXAMPLES REMAINED UNUSED.



1063



1064

- 1063 ★ #C7c, 1931 50c Green Pictorial, No Watermark Vertical imperforate mint pair with fresh and crisp impression, with full original gum and choice, VF NH 1,350.00
- 1064 ★ #C8b, 1931 \$1 Blue Pictorial, No Watermark Vertical mint pair, imperforate horizontally between stamps, reasonably centered, fresh and with full original gum, tiny trivial gum thin on lower stamp, otherwise a scarce item, F-VF OG, 1970 BPA cert. 1,075.00



- 1065 ★ #C8c, 1931 \$1 Blue Pictorial, No Watermark A choice vertical imperforate mint pair, lovely fresh colour and possessing full original gum, XF NH 1,350.00



- 1066 ★ #C10a, 1931 50c Green Pictorial, Watermarked Well centered mint horizontal pair, imperforate vertically between, small thin on right stamp, otherwise with full original gum and scarce, VF OG 1,200.00



- 1067 ★ #C13-C17, 1933 5c-75c "Labrador" Airmail Issue Selected fresh and centered mint set of five in blocks of four, all with full original gum, VF NH **1,785.00**



1068



1069



1070

- 1068 ★ #C15a, 1933 30c Blue "Labrador" Horizontal imperforate mint pair with sheet margin at left, fresh and with full original gum, VF NH **1,200.00**
- 1069 ★ #C16a, 1933 60c Green "Labrador" A choice horizontal imperforate mint pair, sheet margin at left and large even margins on other sides, full pristine original gum, XF NH **1,360.00**
- 1070 ★ #C17a, 1933 75c Bistre "Labrador" Lovely fresh and large margined imperforate mint pair, sheet margin at left and with full original gum, choice, XF NH **1,280.00**



1071



1072

- 1071 P #UX2, 1879 2c Vermilion Widow Weed Post card plate proof entire on india paper from the upper right sheet corner (printed in sheets of four), light horizontal crease towards bottom, but nicer than the few still in existence, scarce, VF (Webb P2-P1) **Est. 750.00**
- 1072 P #UX8, 1903-1904 2c Vermilion Queen Alexandra Post card plate proof entire in issued colour on card mounted india paper, choice and fresh, scarce, VF (Webb P8-P1) **Est. 750.00**

LARGE LOTS AND COLLECTIONS



- 1073 ★ **Comprehensive 1860-1947 Mint Collection** All in clear mounts on Scott album pages, all mint or unused, starts with mint #18-23 (1sh is NH), 28, 32 (unused), 33 (OG, scarce thus), 34 (unused), 37, 38, 40 (unused), various 1880-1890 "Cents" issues, 61-74, 87-97, 98-103; virtually COMPLETE from 1911 to 1947 regular issued stamps (only missing #128 to complete), numerous stamps are NH, plus airmails with C2, C3, C6-C11, C13-C17, dues, etc. A few flaws to expected on earlier issues, but mostly F-VF or better and clean quality throughout. A worthwhile lot. **Est. 2,000.00+**



- 1074 ★ Selected Fresh and Clean Mint 1857-1947 Collection** A very nice mint collection of many dozen different, all displayed on Lighthouse hingeless album pages, well covered from early Pence to late 1940s, plus some airmails and dues. Noted better valued and nice stamps such as mint original gum #1, 5, 8, 17, 32, 38, 39, unusually nice 1880-1896 Cents issues many with full original gum, lightly hinged (a few are never hinged), followed by mint #61-74, 87-97, 100, 103, 104-114, 115-126, 131-144, 171, 180-182, 212-225, C12 (NH), C13-C17, etc. Quality much better than normally encountered, F-VF or better **Est. 1,500.00+**
- 1075 ★ 1870-1947 Valuable Mint Selection / Collection** Many dozen different organized in a small stockbook with numerous better valued stamps and sets, such as #33 (unused; appears OG), 34 (rich colour; unused), mint #36 (VF), 61-74, 76 (unused), 87-95 (6c is Type II; VF NH), 96-103 (VF), 104-114 (set; some are NH), 123, 125, 126, 131-144, 171, 172-182, 212-225, C8 (VF NH), etc. Generally Fine or better on pre-1925 era and mainly F-VF or better for later period.
(Not Illustrated) **Est. 1,000.00+**
- 1076 ★ Mint NH Balance of Collection** Includes #78 block of 16; blocks of four of #149, 150, 152, 154 (four blocks), 173; imperforate pairs #184c, 186iii, 189a, 191d; and 1932 \$1 Wayzata airmail block of four. All fresh mint never hinged, mainly VF
(Not Illustrated) **Est. 300.00+**
- 1077 ★ Grouping of Mint Blocks** Includes 19 different mint NH blocks of four with #48, 87 ("JAMRS" and "NFW" varieties on lower pair), 89, etc. Also #59 mint OG block of four, 160 NH block of 15; and New Brunswick unused block of 2c orange and Nova Scotia 2c lilac and 12½c black VF NH blocks of four. Mainly F-VF or better
(Not Illustrated) **Est. 200.00+**
- 1078 ◎ 1857-1947 Used Collection** All mounted or clear mounts on Minkus album pages, all used and starting with #1 and five other Pence issues, 1865-1890 Cents (34 different), 61-74, 87-97 (set of 11; 6c is Type I), 98/103 (less 12c); virtually COMPLETE regular issues from 1911 Royal Family to 1947 (only missing #128 to complete), plus airmails with C3, C6/C11 (less C10), C13-C17, etc. Some flaws to be expected on earlier issues; but includes a nice run of complete sets throughout, many of those sets are hard to find used. Generally Fine or better
(Not Illustrated) **Est. 1,000.00+**

Canada



Lots 1079-1409



CANADA PENCE



1079



1080

- 1079 ☉ #2, 1851 6p Slate Violet on Handmade Laid Paper** A superb used example, with portion of sheet margin at foot and large margins on other sides, showing visible laid lines, nice colour and impression, light socked-on-nose concentric rings cancellation in black. XF GEM **2,500.00+**

- 1080 ☉ #2, 1851 6p Slate Violet on Handmade Laid Paper** A handsome used example with portion of sheet margin at top, well clear to full margins on other sides, deep colour and showing a socked-on-nose concentric rings cancellation in black, VF **2,500.00**



1081



1082

- 1081 ☉ #4, 1852 3p Red on Medium Wove Paper** A gorgeous used example showing a nice and clear numeral four-ring '2' cancellation in blue from Belleville, full to huge margins all around, bright fresh colour and impression. A nice stamp, VF **300.00+**

- 1082 ☉ #4a, 1853 3p Brown Red on Medium Wove Paper** A marvelous used example, with amazingly rich colour and unusually deep impression on fresh paper, four large margins and with light unobtrusive concentric rings cancellation in black. A beautiful stamp for the meticulous collector, XF GEM **350.00+**



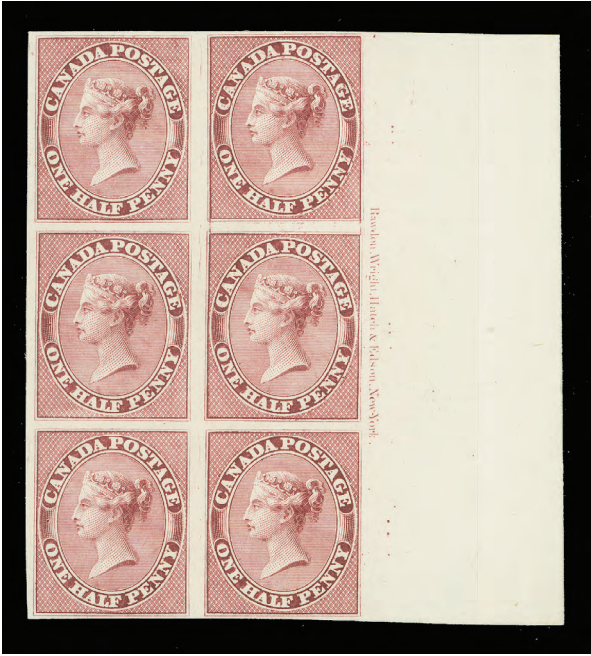
1083



1084

- 1083 ☉ #4a, 1853 3p Brown Red on Medium Wove Paper** A nice used example with clear at foot to large margins, rich colour and impression, shows a light but discernible four-ring '47' cancel from Three Rivers (RF4 - very scarce), F-VF **260.00**

- 1084 ☉ #4vii, 1852 3p Red on Medium Wove Paper** Four margined used example showing the sought-after and distinctive Major Re-entry (Position 47, Pane A), centrally struck concentric rings cancellation in black, VF **1,300.00**



- 1085 P** #8 + variety, 1/2p Rose Positional plate proof block of six (Pos. 83/108) on card mounted india paper, full imprint in right margin, showing Major Re-entries (Pos. 84 and 96), small vertical scissor cut in right frameline of lower left stamp, an appealing multiple for the specialist, VF **Est. 1,000.00+**



- 1086 ☉** #8, 1857 1/2p Rose on Medium Wove Paper Large margined used example with portion of plate imprint in sheet margin at top, deep colour and light undiscernible four-ring numeral cancellation in blue, choice and rarely offered with such attributes, XF GEM, 2008 Greene Foundation cert. **Est. 1,500.00+**



1087



1088

- 1087 ☉** #8, 1857 1/2p Rose on Medium Wove Paper A handsome used example, with unusually large margins at sides, lovely fresh colour on fresh paper and with portion of four-ring numeral cancellation in black, almost Very Fine, 2008 AIEP cert. **675.00**
- 1088 ☉** #8b, 1857 1/2p Rose on Vertically Ribbed Paper Used example with just clear to small margins, cancelled four-ring '21' (Montreal) in black, couple small faults as usually seen on this fragile and rare stamp, Fine appearance, 2008 RPSL cert. **2,750.00**



QUEEN VICTORIA “CHALON” PORTRAIT



- 1089 ★ #9, 1857 7½p Green on Medium Wove Paper** A remarkable unused example, showing full to large margins, gorgeous fresh colour and very clear impression, a rare stamp in and excellent state of preservation, Very Fine. **12,000.00**

Expertization: 2008 Greene Foundation certificate

A CHOICE UNUSED SEVEN AND ONE HALF PENCE QUEEN VICTORIA. A GREAT STAMP FOR THE CONNOISSEUR.



1090



1091

- 1090 ☉ #9, 1857 7½p Green on Medium Wove Paper** A handsome used example, well clear to large margins all around, lovely fresh colour and impression, negligible and barely discernible small pressed crease mentioned by accompanying certificate, quite harsh in our opinion, used with light four-ring '19' numeral cancellation in black from London, U.C., VF, a premium example of this classic rarity, 2002 BPA cert. **4,500.00**
- 1091 ☉ #9a, 1857 7½p Deep Green on Medium Wove Paper** An attractive used example showing the scarce and distinctively deeper shade, with four well clear to large margins and centrally struck four-ring '21' numeral cancellation in black from Montreal. An elusive and appealing stamp for the advanced collector, VF, 2008 Greene Foundation cert. **5,000.00**



- 1092 ☉ #10, 1857 6p Reddish Purple on Very Thick Soft Wove Paper** A pleasing used example of this challenging stamp, four well clear to full margins, lovely impression and with unusually fresh colour, showing a clear and large portion of four-ring numeral '21' (Montreal) cancellation in black. A desirable used stamp in choice condition, VF, 2008 Greene Foundation cert. **8,000.00**



1093 ☒ #15 + variety, 1860 (December 3) Folded cover mailed from Toronto to Port Hope, bearing a single 5c deep vermilion, perf 11¼, with diagonal unprinted area (some foreign matter that fell off afterward), tied by grid, light receiver backstamp, clean and most unusual, VF, ex. *Groten* Est. 300.00

LARGE QUEEN



1094 ★ #21, 1868 ½c Black on Horizontal Wove Paper, Perf 12 Impressive mint block of twenty-five stamps, light overall gum glazing, some perf separation in places, otherwise reasonably centered and a very scarce multiple, F-VF OG Est. 2,000.00+



1095



1096

- 1095 P** #22, 1c **Deep Brown Red** Plate proof single printed on thick white card, large margins all around and choice, XF **750.00**

- 1096 P** #22, 1c **Dark Brown** Trial colour plate proof printed on wove paper (0.0035" thick), just touching design at left to large margins, otherwise a scarce and seldom seen proof, Fine **Est. 300.00**



1097



1098

- 1097 ☉** #22ii, 1868 1c **Brown Red on Bothwell Paper** Exceptionally well centered, brilliant fresh colour on fresh paper, showing an unobtrusive Woodstock (NO 26) split ring cancellation at top, choice, XF **250.00+**

- 1098 ★** #23, 1868 1c **Yellow Orange on Medium Horizontal Wove Paper** Reasonably centered mint example, bright colour on fresh paper, showing a trace of original gum, F-VF (Catalogue value as unused) **1,400.00**



1099



1100



1101

- 1099 P** #24, 2c **Green** Plate proof single printed in issued colour on thick white card, full to large margins, attractive, VF **750.00**

- 1100 ★** #24, 1868 2c **Green on Thinner Horizontal Wove Paper** Well centered mint example with fresh colour and sharp impression, large part original gum. A nice stamp, VF OG, 1999 PSE cert. **2,800.00**

- 1101 ★** #24iv, 1868 2c **Green on Bothwell Paper** Very well centered unused example, rich colour and sharp impression, slight nibbed perms at right characteristic of this type of paper and only mentioned for accuracy, VF **1,300.00**



1102



1103



1104

- 1102 P #25, 3c Red Plate proof single printed in issued colour on thick white card, four large margins and fresh, choice, XF **750.00**
- 1103 P #25, 3c Red Plate proof single in issued colour on thick white card, with horizontal guidelines in margin at foot, four large margins and with fresh colour, VF **750.00**
- 1104 ★ #25ii, 1868 3c Rose Red on Medium Horizontal Wove Paper, Perf 12 Bright fresh unused example, Fine and attractive, scarce **1,000.00**



1105



1106



1107

- 1105 P #26, 5c Peacock Blue Trial colour plate proof single printed on thick white wove paper, four large margins and beautiful fresh colour and impression, choice and seldom seen so nice, XF **Est. 750.00**
- 1106 P #26, 5c Olive Green Plate proof single printed in issued colour on thick white card, with large margins and fresh colour, XF **750.00**
- 1107 P #26, 5c Olive Green Plate proof single printed in issued colour on thick white card, fresh, F-VF **750.00**



1108



1109

- 1108 P #27, 6c Brown (Plate 1) Plate proof single printed in issued colour on thick white card, fresh and with full to large margins, attractive, VF **750.00**
- 1109 ★ #27, 1868 6c Dark Brown (Plate 2) on Medium Horizontal Wove Paper, Perf 12 A nice unused example with rich colour on fresh paper, attractive, Fine **1,200.00**



1110



1112



1111

- 1110 ★ #28, 1868 12½c Dull Blue on Horizontal Wove Paper Exceptionally well centered mint example, lovely fresh colour and clear impression, possessing large part original gum. A tough stamp in choice condition, XF OG **2,800.00**
- 1111 ★ #28, 1868 12½c Blue on Medium Horizontal Wove Paper, Perf 12 Quite well centered unused (redistributed gum), nice colour and impression, VF **1,400.00**
- 1112 ★ #28, 28ii, 1868 12½c Dull Blue on Medium Horizontal Wove, Perf 12 Bottom sheet margin unused block of four, reasonably centered, lower left stamp showing no outer frameline at lower left value tablet, brilliant colour on fresh paper. A scarce multiple, F-VF **4,300.00**



1113



1114

- 1113 P #29, 15c Grey Violet Plate proof single printed in issued colour on thick white card, attractive and scarce, VF **1,000.00**
- 1114 P #29, 15c Grey Violet Plate proof single in issued colour on thick white card, faint toning mostly at top, otherwise with large margins and scarce, VF **1,000.00**

Fax your Bid(s) toll free in North America
Dial 1(888) 867-8267

SMALL QUEEN



- 1115 ★ #34iii, 1889-1897 ½c Black (Ottawa Printing) Perf 12 A remarkable positional mint block of twenty-four stamps, showing gutter margin at centre and sheet margin at foot with large portion of imprint (Boggs Type V) at left and right, unusually well centered, trivial perf separation confined to sheet margin at foot and between left vertical pair, horizontal natural gum skip along top row. A rarely offered positional multiple, VF NH **Est. 3,000.00+**



1116



1117

- 1116 ★ #35, 1889-1895 1c Yellow (Ottawa Printing), Perf 12 Precisely centered and fresh mint block of four, deep impression and possessing full pristine original gum, never hinged, scarce so nice, VF+ NH **720.00**
- 1117 ★ #35, 1892 1c Bright Yellow (Ottawa Printing), Perf 12 Bottom sheet margin plate imprint (Boggs Type VII) strip of four, mint with full original gum, couple natural edge bends, Fine NH **Est. 200.00+**



1118



1120

- 1118 E #36, 2c Orange Red Canadian Bank Note engraved plate essay on india paper, some light toning on reverse only, otherwise with large margins, VF and scarce **Est. 500.00**



- 1119 E **#36, 2c Dark Yellowish Green** Canadian Bank Note engraved plate essay block of four on card mounted india paper, fresh colour and with large even margins all around. A scarce multiple in choice condition, XF **Est. 2,000.00**
- 1120 E **#37, 3c Black** Canadian Bank Note lithographed plate essay printed on white-surfaced wove paper, four large margins, scarce and attractive, XF *(Illustrated on Page 35)* **Est. 500.00+**



- 1121 ★ **#37, 1879 3c Orange (Montreal Printing), Perf 12** Extremely well centered mint example showing position guide dot at lower left corner, deep fresh colour and possessing full pristine original gum, never hinged. A tough stamp to find, VF NH **600.00+**



- 1122 ★ **#41, 1889-1895 3c Bright Vermilion (Ottawa Printing), Perf 12** Bottom sheet margin mint strip of ten stamps, showing plate imprint (Boggs Type VII) at foot, fresh colour, faint natural gum bends from edge of sheet), reasonably centered and with full original gum, F-VF NH **1,425.00+**



Normal



Major Re-entry

- 1123 ★ #42, 42iv, 1888-1897 5c Grey (Ottawa Printing), Perf 12 A remarkable top sheet margin mint block of four, has the elusive and prominent Major Re-entry on lower right stamp with doubling in CANADA POSTAGE, also below E and a doubling of the upper oval; right pair including the plate variety is unusually well centered, all with full pristine original gum, never hinged. Experts have not yet established the exact sheet position of this re-entry. An impressive positional multiple for the advanced collector, VF NH (Plate variety listed but unpriced in Unitrade Specialized Catalogue)
- 3,600.00+**



- 1124 ★ #45a, 1889-1894 10c Deep Rose Carmine (Ottawa Printing), Perf 12 Well centered mint block of four, amazing rich colour and impression, possessing large part original gum. A choice multiple, VF
- 3,200.00**

Call us toll free in North America
Dial 1(800) 667-8267
or
Fax us 1(888) 867-8267



- 1125 ☒ #45a, Neat lot of three covers from the same correspondence, each bears a single 10c dull rose, mailed from Dundas, Ontario to Cocanada, India, with Hamilton and Indian receiver backstamps: first cover dated 1889 (May 22) stamp tied by CDS dispatch; second dated 1890 (December 11) stamp tied by segmented cork cancel and third dated 1891 (October 1) tied by CDS. An appealing trio of Ten cent single-franking covers to India, F-VF **Est. 500.00**



- 1126 ★ #46-47, 1893 20c vermilion & 50c deep blue Widow Weed Issue Choice mint singles, very well centered for the issue, fresh and with large part original gum, hinged. A nice duo, VF OG **1,200.00**

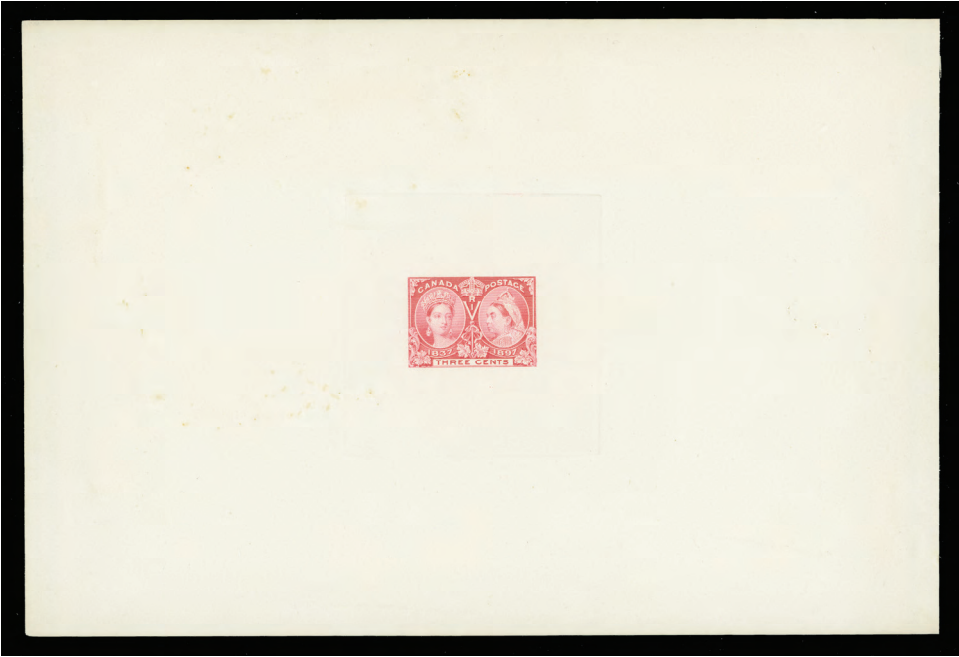
1897 DIAMOND JUBILEE



- 1127 ★ #50-60, 1897 ½c-50c Jubilee Issue A nice and fresh short mint set of eleven stamps; 10c is hinged and 50c with faint overall glazed gum; rest are never hinged, F-VF **3,510.00**



- 1128 ★ #50-61, 1897 ½c-\$1 Jubilee Issue Mint set up to the One dollar, fresh colours, mint with full original gum, some are lightly hinged, attractive and mostly VF centering **3,490.00**



- 1129 P #53, 1897 3c Rose Large Die Proof printed in issued colour directly on card (222 x 152mm), without die number and imprint below design, showing full die sinkage and three pencil notations "4E" "72 j/o" and "2" on reverse, faint trace of toning spots, well away from design, rare and attractive, VF **Est. 2,500.00**



- 1130 ★♦ #53, XF-SUPERB (95) 1897 3c bright rose, a post office fresh and very well centered mint example with full original gum, never hinged. 2009 Sismondo cert. Graded 95 XF-Superb **75.00+**



- 1131 ★ **#56, 1897 8c Dark Violet** Post office fresh mint block of four, well centered with deep rich colour, sheet margin at left and stamps with full pristine original gum, never hinged. A nice multiple in premium condition, VF NH **2,160.00**



1132



1133

- 1132 ★ **#56, 1897 8c Dark Violet** A very well centered mint example within large margins, deep rich colour and impression and possessing full immaculate original gum. A premium stamp, VF+ NH **540.00**
- 1133 ★ **#56, 1897 8c Dark Violet** Very well centered mint example with brilliant fresh colour and possessing full pristine original gum, choice, VF+ NH **540.00**



- 1134 ★ **#59, 1897 20c Vermilion** An exceptional mint block of four, superbly centered and with lovely rich colour and possessing full immaculate original gum, never hinged. Rarely found multiple in such superior quality, VF+ NH **4,800.00**



- 1135 ★ #60, 1897 50c Ultramarine Gorgeous fresh mint block of four, brilliant colour on fresh paper, with full original gum, lightly hinged at centre top, leaving bottom pair never hinged, trivial gum wrinkle on lower left stamp, otherwise a nice block, F-VF 2,450.00



- 1136 ★ #60, 60i, 1897 50c Ultramarine (Light to Deep) An unusual mint block of four, showing two distinctive shade, left pair in ultramarine and right pair in a deeper ultramarine shade, fresh and striking, minute spot of gum disturbance on upper left stamp (counted as lightly hinged), other three stamps with full unblemished original gum, F-VF NH 3,375.00



1137



1138

- 1137 ★ #61, 1897 \$1 Lake A marvelous mint example, well centered with large margins, lovely fresh colour and impression, full original gum, VF OG 1,200.00
- 1138 ★ #61, 1897 \$1 Lake Quite well centered mint example with gorgeous post office fresh colour and possessing full original gum, lightly hinged. A nice stamp, VF LH 1,200.00



1139



1140

- 1139 ★ #62, 1897 \$2 **Dark Purple** Precisely centered mint example with lovely deep fresh colour and impression, full original gum, hinged, VF+ **2,000.00**

- 1140 ★ #62, 1897 \$2 **Dark Violet** A beautiful and reasonably centered mint example, with unusually deep rich colour and full original gum, lightly hinged, F-VF LH **1,600.00**



1141



1142

- 1141 ★ #63, 1897 \$3 **Yellow Bistre** Nicely centered mint example with gorgeous fresh colour and with full original gum, small hinge remnant, VF OG **2,000.00**

- 1142 ★ #63, 1897 \$3 **Yellow Bistre** Exceptionally well centered example, without gum, lovely deep rich colour on fresh paper, XF **2,000.00**



- 1143 ☉ #63, 1897 \$3 **Yellow Bistre** Nicely centered used example with large margins and deep rich colour on fresh paper, Winnipeg 1895 corner CDS postmarks in magenta, pretty and VF **1,500.00**



- 1144 ★ #63i, 1897 \$3 **Yellow Bistre** Post office fresh mint example, showing the elusive Re-entry in "POSTAGE" and in central "V", full original gum, lightly hinged. Listed but unpriced in Unitrade catalogue. Rarely offered, F-VF LH **Est. 1,000.00**



1145



1146

- 1145 ★ **#64, 1897 \$4 Purple** An attractive mint example, quite well centered within uncharacteristically large margins, showing deep rich colour and large part original gum, minute gum thins from hinge removal mentioned for the record, otherwise superb appearance, VF **2,000.00**
- 1146 ★ **#64, 1897 \$4 Purple** A beautiful mint example, unusually deep rich colour on fresh paper, full original gum, small hinge remnant, VF **2,000.00**



- 1147 ★ **#65, 1897 \$5 Olive Green** Well centered mint example with lovely fresh and rich colour, crisp impression on fresh paper and possessing full original gum that has been lightly hinged. A choice stamp, VF LH **2,000.00**



- 1148 ★ **#65, 1897 \$5 Olive Green** Precisely centered and fresh mint example, with full original gum, lightly hinged. A nice stamp, XF LH **2,000.00**



- 1149 ★ **#65, 1897 \$5 Olive Green** Nicely centered mint example within large margins, brilliant fresh colour and impression on fresh paper, possessing full original gum. A beautiful example of this sought-after stamp, VF LH **2,000.00**



1897 - 1898 QUEEN VICTORIA "MAPLE LEAF"



- 1150 P** #66-73, 1897-1898 ½c-10c Queen Victoria "Leaf" Issue Complete and choice set of eight plate proof singles, in colour of issue on card mounted india paper, all with large margins, XF **Est. 1,250.00**



- 1151 ★** #68, 1897 2c Dull Purple A beautiful mint Plate No. 3 strip of four, lovely rich colour and impression on fresh paper, left pair is superbly centered within large margins; full pristine original gum. A nice plate multiple, F-VF NH **440.00**



- 1152 P** #69, 1898 3c Queen Victoria "Leaf" Trial colour die proof (stamp size) engraved in pale lilac on card mounted india paper. An attractive and very rare proof for exhibition, VF **Est. 1,000.00+**



- 1153 P** #69, 1898 3c Queen Victoria "Leaf" Trial colour die proof (stamp size) engraved in dull yellow green on card mounted india paper, negligible edge toning, a very rare proof ideal for exhibition and for the advanced collection, VF **Est. 750.00+**



1154



1155

- 1154 ★ **#70, 1897 5c Bright Blue on Bluish Horizontal Wove Paper** Nicely centered mint example for this very difficult stamp, gorgeous fresh colour and impression and possessing full pristine original gum, VF NH **600.00**
- 1155 ★ **#70i, 1897 5c Bright Blue on Horizontal Wove Paper** A scarce imperforate block of four, ungummed as issued, fresh, VF+ **1,000.00**



1156



1157

- 1156 ★ **#71, 1897 6c Brown on Vertical Wove Paper** An exceptional mint block of four, unusually well centered within large margins, rich colour and sharp impression on fresh paper, full pristine original gum, never hinged. Virtually impossible to find a finer block, XF NH GEM **2,400.00+**
- 1157 ★ **#71, 1897 6c Brown on Vertical Wove Paper** Extremely well centered and choice mint block of four, lovely fresh colour and possessing full pristine original gum, never hinged. Few such high-quality multiples still survive and a wonderful multiple for the perfectionist, XF NH **2,400.00+**



1158



1159

- 1158 ★ **#71, 1897 6c Brown on Vertical Wove Paper** Precisely centered and choice mint example with deep rich colour and with full unblemished original gum, XF NH, 1993 Greene Foundation cert. **600.00+**

- 1159 ★ **#71, 1897 6c Brown on Vertical Wove Paper** Exceptionally well centered mint example with lovely rich colour and impression, full original gum, choice, XF NH, 2008 Greene Foundation cert. **600.00+**



1160



1161

- 1160 ★ **#72, 1897 8c Orange on Vertically Wove Paper** An attractive mint example with post office fresh colour and razor-sharp impression on fresh white wove paper, nicely centered for this difficult stamp and with full unblemished original gum, VF NH **1,050.00**

- 1161 ★ **#72a, 1897 8c Orange on Horizontal Wove Paper** A choice and large margined imperforate mint pair, lovely fresh colour and impression, possessing full original gum, never hinged. Only 50 pairs were issued, XF NH **1,875.00+**

1898 - 1902 QUEEN VICTORIA "NUMERAL"



1162



1163



Major Re-entry

- 1162 ★ **#75ii, 1898 1c Blue Green** A stunning mint example, precisely centered within very large margins, gorgeous deep fresh colour on fresh paper, possessing full immaculate original gum, never hinged. A superb stamp, XF NH GEM **Est. 200.00+**

- 1163 ★ **#75iii, 1898 1c Grey Green** A stunning mint example showing **Major Re-entry** in both '1's, in "CE" of "CENTS" and in some framelines; quite well centered within enormous margins, lovely fresh colour and possessing full pristine original gum, never hinged. A great stamp, VF NH JUMBO **600.00**



1164



1166

- 1164 ★ #76, 1898 2c Purple Very well centered mint block of four (no blind perfs; just uncleared perf discs), sheet margin at left, lovely fresh colour and impression, full unblemished original gum, never hinged. A choice multiple, VF NH **720.00**



1165



1167

- 1165 ★ #77d, 1899 2c Carmine, Die II An impressive upper right sheet corner block of four, large margins, fresh and pristine, ungummed as issued. A desirable positional imperforate multiple, very scarce thus, VF, 2008 Greene Foundation cert. **3,000.00**
- 1166 ★ #78, 1898 3c Carmine An exceptionally well centered mint block of four, with large margins, lovely fresh colour and with full pristine original gum, never hinged. A difficult multiple to find, especially in such top-quality, XF NH **1,200.00+**
- 1167 ★ #81, 1902 7c Olive Yellow A striking positional mint example from the upper right sheet corner position, nicely centered within large margins, post office fresh and bright colour and possessing full pristine original gum. A great stamp, VF+ NH **750.00+**



1168



1169

- 1168 ★ **#82a, 1898 8c Brown Orange on Vertical Wove Paper** A superb imperforate mint pair with large even margins, deep rich colour and impression, possessing full original gum. Difficult to find a nicer pair, XF LH **1,500.00+**
- 1169 ★ **#83, 1898 10c Brown Violet** Superbly centered mint example with very large margins, gorgeous fresh colour and "proof-like" impression on fresh paper, full unblemished original gum, never hinged. An exceptional stamp in all respects, XF NH GEM **1,950.00+**



1170



1171

- 1170 ★ **#83a, 1898 10c Deep Brown Violet on Vertical Wove Paper** A remarkable imperforate mint pair with unusually large margins all around, lovely fresh colour and crisp impression on fresh paper, possessing full original gum, XF LH GEM **1,500.00+**
- 1171 ★ **#83ii, 1898 10c Brown Violet on Horizontal Wove Paper** A choice imperforate pair, sheet margin at left, ungummed as issued, fresh and pristine, XF **1,250.00**



1173



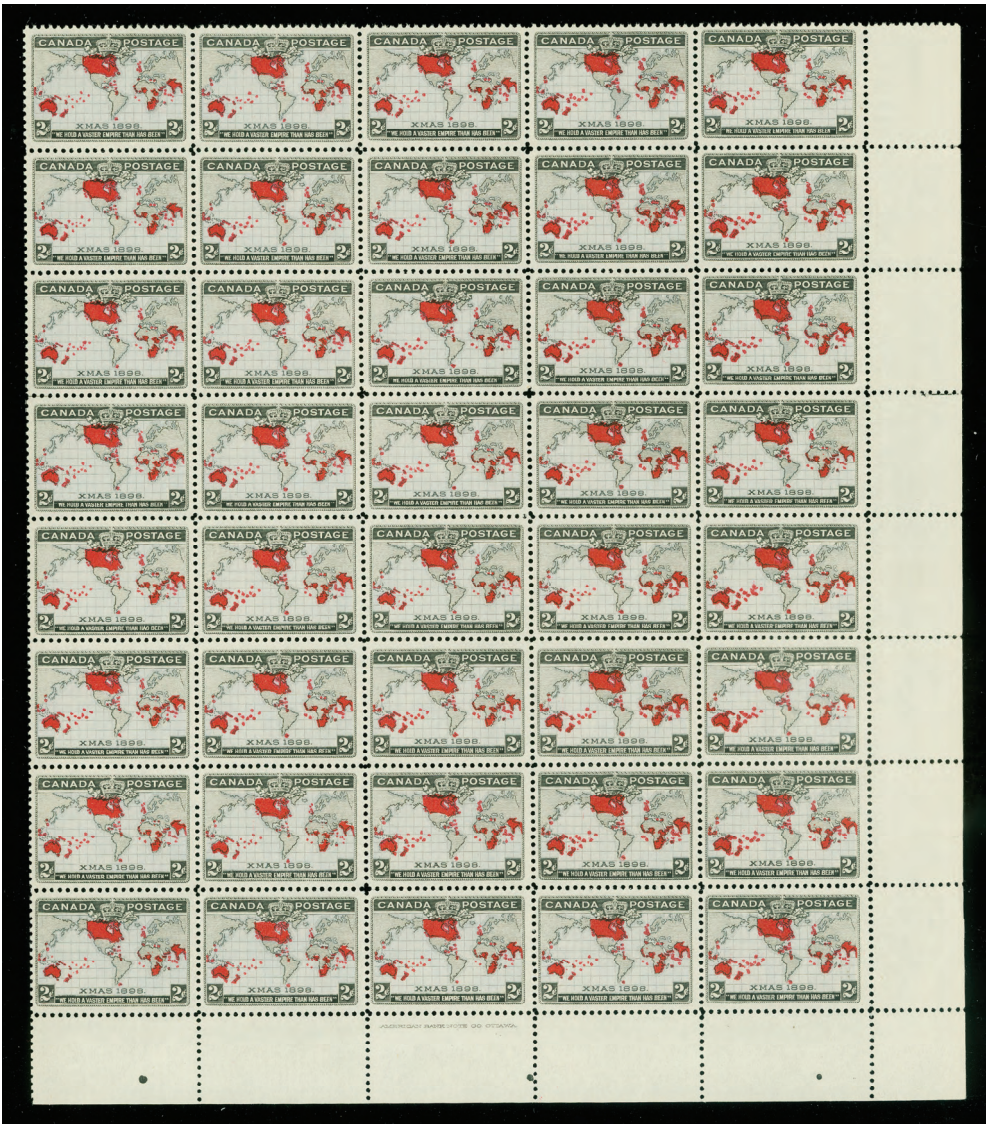
1172



1174

- 1172 ★ **#84, 1900 20c Olive Green** An attractive and fresh mint block of four, full original gum, hinged twice, left pair very fine, F-VF OG block **2,400.00**
- 1173 ★ **#84, 1900 20c Olive Green** Exceptionally centered mint example with deep rich colour and strong impression on fresh paper, possessing full unblemished original gum, never hinged. A superb stamp in all respects, XF NH, 2008 Greene Foundation cert. **2,700.00+**
- 1174 ★ **#84, 1900 20c Olive Green** Nicely centered mint example with lovely rich colour and impression, large part original gum, VF OG **900.00**

1898 IMPERIAL PENNY POSTAGE

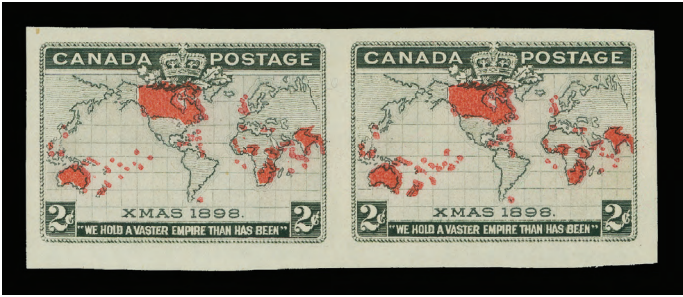


1175 ★ #85, 1898 2c Black, Lavender and Carmine An impressive mint block of forty stamps (Position 26-30 / 96-100), from lower right sheet corner showing imprint below stamp Position 98, unusually well centered for such a large multiple, lovely fresh colours and possessing full original gum, never hinged, some perf separation between fifth and sixth rows at right and some wrinkles in selvage only at lower right, insignificant for this beautiful plate multiple in excellent state of preservation, a great showpiece, VF NH **6,000.00**

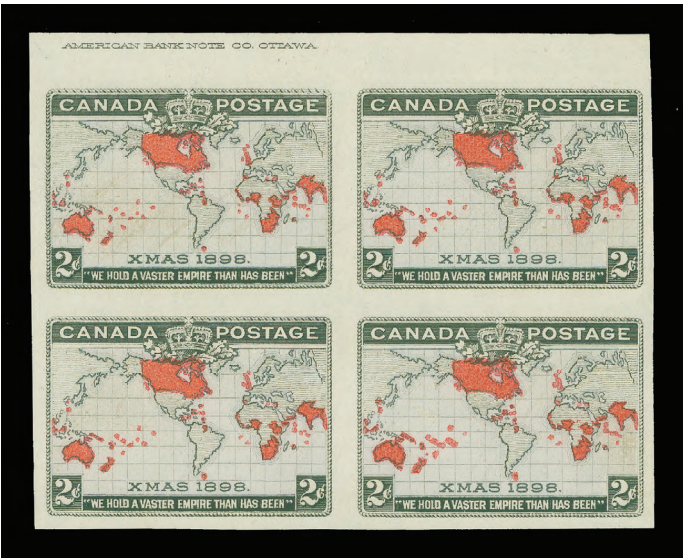
Fax your Bid(s) toll free in North America
Dial 1(888) 867-8267



1176 ★ #85a, 1898 2c Imperial Penny Postage Imperforate block of four with portion of sheet margin at right, light ink oxidation as commonly seen on this early tri-coloured stamp, ungummed as issued, VF
1,400.00



1177 ★ #85a, 1898 2c Black, Lavender and Carmine Map Horizontal imperforate pair with enormous margins, without gum as issued, XF
700.00



1178 ★ #85a + variety, 1898 2c Black, Lavender & Carmine Top sheet margin block of four (Plate 1; Position 3-4/13-14), showing full imprint above upper left stamp, which also shows a re-entry in several places (Position 3), ungummed as issued. An appealing plate multiple for the specialist, VF
1,400.00+

1903 – 1908 KING EDWARD VII



1179

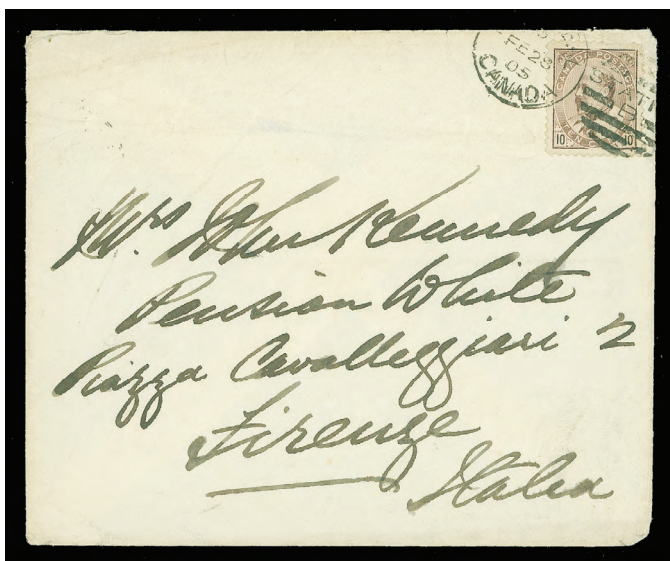


1180

- 1179 ★ #92, 1903 7c Olive Bistre Extremely well centered mint block of four, uncharacteristic for this challenging stamp, from the upper right sheet corner margin, lovely fresh colour and crisp impression on fresh paper, very lightly hinged in selvedge only, leaving all four stamps with full unblemished original gum, never hinged. Rarely encountered multiple in superb quality, XF NH **4,800.00+**
- 1180 ★ #92iii, 1903 7c Straw Post office fresh mint block of four, unusually well centered for this difficult stamp, brilliant colour and sharp impression, possessing full immaculate original gum, never hinged. A tough multiple to find in premium condition, VF NH **3,600.00**



- 1181 ★ #93, 1903 10c Brown Lilac A remarkable mint block originating from the upper left sheet corner, very well centered for this challenging stamp, right pair within large margins, lovely fresh colour, minor crease entirely in sheet margin and mentioned for strict accuracy only, stamps with full original gum, never hinged. A beautiful positional multiple, rarely found in such nice quality, VF NH **7,800.00**



- 1182 ☒ #93, 1905 (February 28) Envelope mailed from Montreal to Firenze, Italy, franked with single 10c Edward VII and tied by Montreal Station B duplex cancellation, light receiver backstamp, some cover creases and wrinkles at top touching the stamp but a rare single-usage paying the double UPU rate, VF appearance. **Est. 500.00**

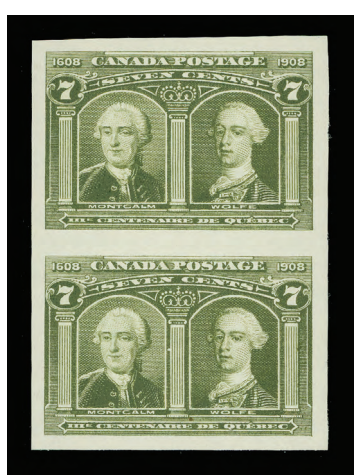


- 1183 ★ #95i, 1908 50c Deep Purple A marvelous upper left sheet corner mint block of four showing the distinctive deeper rich shade, nicely centered, minor wrinkles confined in upper left corner selvedge only, top pair naturally short gummed at top and catalogued as hinged only, otherwise all four stamps with full unblemished original gum, never hinged. An eye-appealing multiple of this key stamp, VF NH **10,800.00**

1908 QUÉBEC TERCENTENARY



1184 ★ #96-103, 1908 ½c-20c Québec Tercentenary Issue A beautiful and complete mint set of eight stamps, all with post office fresh colours, reasonably centered and all with full pristine original gum, never hinged. A nice and sought-after set, F-VF NH 2,800.00



1185 ★ #96ii-103ii, 1908 ½c-20c Québec Tercentenary Issue Complete and pristine fresh set of eight vertical imperforate pairs, ungummed as issued, each with characteristic deeper shade associated with the first printing on white wove paper, all with full to large margins; 15c with insignificant vertical pressed crease, not visible from front. A beautiful and very scarce complete set for the advanced collector, VF 8,000.00



- 1186 ★ #97, 1908 1c Green Cartier & Champlain** An exceptional mint example, precisely centered within four large margins, lovely fresh colour and crisp impression on fresh paper, minute natural gum inclusion at lower right, otherwise full pristine original gum, XF NH JUMBO **120.00+**



1187



1188

- 1187 ★ #98a, 1908 2c King Edward VII and Queen Alexandria** A choice vertical imperforate mint pair, large margins, bright fresh colour and with full original gum, seldom seen, VF LH **1,000.00**
- 1188 ★ #102, 1908 15c Orange Champlain's Departure** An attractive mint block of four, quite well centered with right pair being well centered within large margins, lovely fresh colour and with full pristine original gum, never hinged. Seldom seen multiple in such nice quality, F-VF NH **2,580.00**



- 1189 ★ #103, 1908 20c Brown Cartier's Arrival** Post office fresh and reasonably centered mint block of four with full immaculate original gum, never hinged. A nice and scarce multiple, F-VF NH **3,000.00**



- 1190 ★ #103, 1908 20c Brown Cartier's Arrival A choice and very well centered mint block four, deep fresh colour and with full original gum, each stamp is lightly hinged. A difficult block to obtain, VF LH
1,600.00

1911 – 1925 KING GEORGE V “ADMIRAL”



- 1191 ★ #104-122, 1911-1925 1c-\$1 King George V "Admiral" Issue Complete mint set of eighteen stamps, all in mint NH blocks of four, also includes part perforate (sheet form; dry printing) 1c and 2c blocks of four, War Tax 1c-2c, 2c+1c brown Die II, 2c+1c carmine, perf 12x8 also all in mint blocks of four. Plus six different booklet panes (two are LH; other four NH). A fresh and clean lot, F-VF
Est. 2,500.00+

Call us toll free in North America
Dial 1(800) 667-8267
or
Fax us 1(888) 867-8267



- 1192 ★ #104-122, 1911-1925 1c-\$1 King George V "Admiral" Issue Selected well centered and fresh complete mint set of eighteen stamps; 3c carmine and 5c blue are very lightly hinged; 2c carmine and 10c plum have faint natural gum skip, otherwise full original gum, never hinged with fresh colours, every stamp chosen for superior centering, VF-XF, an outstanding set **4,400.00**



- 1193 ★ #104-122, 107a, 112a, 1911-1925 1c-\$1 King George V "Admiral" Issue Complete mint set of eighteen stamps, plus 2c and 5c on thin paper, reasonably centered to well centered, all with fresh colours and full original gum; 5c violet and 10c plum with trivial gum skips, otherwise all never hinged, F-VF **3,045.00**



- 1194 ★ #104a + variety, 1913 1c Yellow Green on Vertical Wove Paper Mint booklet pane of six stamps, well centered and showing a distinctive slip print on left stamps and tab, unusual and the first we have seen. A neat item for the specialist, VF LH **Est. 250.00+**



1195



1197

- 1195 ★ #104ii, 1920 1c Dark Yellow Green (Wet Printing) Nicely centered mint single with tall margins, lovely fresh colour and possessing full pristine original gum, seldom offered, VF NH, 1995 Greene Foundation cert. **90.00**



Major Re-entry

- 1196 ☉ #104vii, 1911 1c Blue Green Used example showing the sought-after Major Re-entry (Plate 12 LR, Position 35), most noticeable in lower corner value tablets and both "1" denomination; used with Winnipeg slogan cancellation, light vertical crease and small thin, otherwise reasonably centered within large margins, characteristic deep shade and impression of the early printing on which this major plate variety originates, F-VF appearance **1,875.00**

- 1197 ★ #105iv, 1924-1925 1c Pale Yellow, Die II (Dry Printing) A superbly centered mint example within balanced margins, lovely pastel-like fresh colour and impression, full unblemished original gum, never hinged. A great stamp in all respects and undercatalogued, XF NH, 1995 Greene Foundation cert. **75.00+**



- 1198 ★ #108, 108b, 1918 3c Brown and 3c Dark Yellow Brown (Wet Printings) Well centered mint blocks of four, fresh and distinctive shades, with full original gum, never hinged. An attractive duo in choice condition, VF-XF NH **840.00**



1199



1200

- 1199 ★ #109c, 1924 3c Carmine, Die II (Dry Printing)** An impressive mint example, well centered within unusually large margins for the issue, rich colour and impression on fresh paper and possessing full immaculate original gum. A tough stamp to obtain in such top-quality, XF NH JUMBO, 1994 Greene Foundation cert. (identified as old number 109i) **180.00+**

- 1200 ★ #110d, 1925 4c Yellow Ochre (Dry Printing)** A beautiful mint example, well centered within large margins, post office fresh colour and possessing full pristine original gum. A nice stamp, VF NH **Est. 200.00+**



1201



1203

- 1201 ★ #111, 1914 5c Dark Blue (Wet Printing)** Precisely well centered mint block of four, deep rich colour and with full unblemished original gum, never hinged. A tough multiple in choice condition, XF NH **2,400.00+**



- 1202 ★ #111, 1914 5c Dark Blue (Wet Printing)** An outstanding mint example of this key stamp, well centered within large margins, lovely fresh and rich colour, deep impression and possessing full immaculate original gum, never hinged. Ideal for the discriminating collector, VF+ NH **600.00+**

- 1203 ★ #112ii, 1922 5c Rose Violet (Wet Printing)** Very well centered mint block of four, lovely fresh colour and impression, possessing full pristine original gum, never hinged. A beautiful multiple of this distinctive shade, VF+ NH **660.00**



- 1204 ★ #112v, 1924 5c Violet on Thin Wove Paper (Wet Printing) Right sheet margin mint block of nine stamps, showing complete pyramid guidelines, fresh and deep colour, full original gum, barely hinged on top and bottom centre stamps, others NH, a few slightly nibbed perfs at foot mentioned for the record, insignificant for this key block, VF Est. 1,000.00+



1205



1206

- 1205 ★ #113b, 1912 7c Straw (First Wet Printing) Unusually well centered mint block of four, portion of plate inscription in top sheet margin, tiny gum inclusion on upper left stamp and light natural gum bend on top pair only mentioned for accuracy, all four stamps are never hinged. A scarce mint multiple, almost Very Fine centering 2,280.00
- 1206 ★ #114b, 1924 7c Red Brown (Wet Printing) A choice mint block of four, well centered, rich colour and with full pristine original gum, VF NH 480.00



1207



1208

- 1207 ★ #114iv, 1924 7c Red Brown (Wet Printing)** Nicely centered mint example with deep rich colour and showing the diagonal line in "V" of "SEVEN", full pristine original gum, VF NH, 1993 Greene Foundation cert. **150.00**

- 1208 ★ #114v, 1924 7c Red Brown (Wet Printing)** A choice and well centered mint example, rich colour on fresh paper showing the diagonal line in "N" of "CENTS" and with full immaculate original gum, VF NH, 1996 Greene Foundation cert. **150.00**



- 1209 ★ #119, 1925 20c Olive Green (Dry Printing)** An extremely well centered and fresh mint block of four, showing nearly full Type D lathework in bottom sheet margin, full original gum, never hinged. A premium multiple, XF NH **2,500.00**



- 1210 ★ #119iv, 1925 20c Olive Green (Retouched Frameline; Dry Printing)** Very well centered mint example with lovely fresh colour on fresh paper, possessing full unblemished original gum, never hinged. A nice stamp, VF NH, 2002 Greene Foundation cert. **450.00**



- 1211 ★ #119d, 1912 20c Grey Green (First Wet Printing) An impressive mint block of four, well centered for this challenging early printing, intact perforations, true rich colour and impression and possessing full unblemished original gum, never hinged. A rarely offered multiple, especially in nice quality, VF NH **3,600.00**



- 1212 ★ #120, 1925 50c Black Brown (Re-engraved; Dry Printing) Lovely fresh and reasonably centered mint Plate A4 block of eight stamps, minor perf separation in top right margin supported by a hinged, all stamps are NH. A scarce plate multiple, F-VF **1,840.00**



- 1213 ★♦ #120, XF (90) 1925 50c black brown (Re-engraved; Dry Printing), well centered mint example with post office fresh colour and full pristine original gum, never hinged. 2009 Sismondo cert. Graded 90 XF **360.00**



1214



1215



1216

- 1214 ★ #122, 1925 \$1 Orange (Dry Printing) Well centered mint single with full Type D lathework in bottom selvedge, lovely fresh colour and with full original gum, VF LH **450.00**
- 1215 ★ #122, 1925 \$1 Orange (Dry Printing) A beautiful mint example showing sharp impression and deep rich colour on fresh paper, nicely centered and with full pristine original gum, VF NH **450.00**
- 1216 ★ #122, 1925 \$1 Bright Orange (Dry Printing) Nicely centered mint example with pastel-like fresh colour, full original gum, attractive, VF NH **450.00**



-1217-



1219

- 1217 ★ #123-124, 1913 1c Dark Green and 2c Carmine (Wet Printing), Perf 8 Horizontally Fresh mint singles, well centered for this difficult issue, both with full original gum, VF NH **900.00**



- 1218 ◎ #123-124, 1913 1c Dark Green and 2c Carmine, Perf 8 Horizontally Choice used CDS coil pairs, fresh colours and well centered for these challenging issues and with intact perforations, VF **550.00**
- 1219 ★ #123, 1913 1c Blue Green (Wet Printing), Perf 8 Horizontally A choice coil mint single with intact perforations, well centered for this difficult stamp, gorgeous fresh colour and with full original gum, VF NH **450.00**



- 1220 ★ #125-129, MR6 and MR7, 1c-3c Admiral Coil Issues Lot of eight different coil pairs, all perf 8 vertically, all mint never hinged (except for 1c blue green), includes: 1c green, 1c blue green, 1c yellow, Die I (wet printing), 2c rose red, 2c green (dry printing), 3c brown, and War Tax 2c+1c carmine, Die I and 2c+1c brown, Die II, F-VF lot **1,680.00**



- 1221 ★ #125-129, MR7, 1c, 2c, 3c & 2c+1c Admiral Mint Coil Strips of Four, Perf 8 Vertically Lot of six different: 1c green, 1c yellow, Die I (wet printing), 2c carmine, 2c green (dry printing), 3c brown and War Tax 2c+1c dark brown, Die II, all fresh and mint never hinged, F-VF **1,560.00**

- 1222 ★ #126a, 1924 1c Yellow, Die II (Dry Printing), Perf 8 Vertically Part Perforate (Sheet Form), mint block of forty (10x4) from bottom sheet margin and mint block of forty-eight from top sheet margin, nicely centered, VF NH *(Not Illustrated)* **2,640.00**



1223



1224

- 1223 ★ #126ac, 1924 1c Yellow, Die I (Wet Printing), Perf 8 Vertically Part Perforate Coil (Sheet Form) mint block of four, from the lower left sheet corner position with natural edge at left, rich colour and impression characteristic of this printing, showing Type B lathework in bottom sheet margin, full original gum, hinged on top pair and bottom selvage, scarce, F-VF OG **1,500.00**

- 1224 ★ #126c, 1924 1c Yellow, Die I (Wet Printing), Perf 8 Vertically Part Perforate (Sheet Form), gorgeous fresh mint block of four, well centered for this and with full original gum, hinged at top, VF OG **600.00**



- 1225 ★ #126iii, 128iii, 129i, 1c, 2c and 3c Paste-up Coil Strips of Four** Three different which includes 1c yellow, Die I (wet printing), 2c green (dry printing) and 3c brown (wet printing), fresh and with full original gum, F-VF NH *(Not Illustrated)* **505.00**



1226



1227



1230

- 1226 ★ #128ai, 1924 2c Deep Green (Wet Printing), Perf 8 Vertically Part Perforate (Sheet Form),** precisely centered mint block of four, rich colour and full original gum, hinged at top only, scarce so nice, XF OG **600.00**
- 1227 ★ #130a, 1924 3c Carmine, Die I (Wet Printing), Perf 8 Vertically Part Perforate (Sheet Form),** exceptionally well centered mint block, characteristic rich colour and deep impression, showing trace of Type D lathework, full original gum with three stamps NH. Rarely seen in such superior quality, XF **2,250.00**



1228



X1229

- 1228 ★ #130biii, 1924 3c Carmine, Die II (Dry Printing), Perf 8 Vertically** Exceptionally well centered mint paste-up coil pair, scarce thus, fresh colour and with full original gum, very lightly hinged, difficult to find, XF VLH **300.00**
- 1229 ★ #131-134, 1915-1924 1c-3c Admiral Coils, Perf 12 Horizontally** Selected fresh and well centered mint set of four, all with full original gum, choice, VF NH **430.00**
- 1230 ★ #132i, 1915 2c Carmine (Wet Printing), Perf 12 Horizontally** Mint paste-up coil pair, very well centered for this, lovely fresh colour and with full original gum, choice, VF+ NH, 1994 Greene Foundation cert. **312.50**



- 1231 ★ **#135, 1917 3c Brown Fathers of Confederation** Exceptionally well centered mint example within unusually large margins, lovely fresh colour and crisp impression on fresh paper and with full immaculate original gum. Rarely seen this nice, XF NH JUMBO **210.00+**



X1232



1233

- 1232 ★ **#136-138, 1924 1c, 2c and 3c Admiral Imperforate Issues** A choice mint set of three in blocks of four, fresh and with full original gum, VF NH **1,000.00**
- 1233 ★ **#136, 1924 1c Yellow, Die I (Wet Printing), Imperforate** A choice and fresh mint block of four, showing Type D (inverted) lathework, full original gum, lightly hinged in bottom margin, leaving stamps never hinged. An attractive lathework multiple, VF **1,000.00+**



- 1234 ★ **#136, 1924 1c Yellow, Die I (Wet Printing), Imperforate** Upper left Plate A180 mint block of sixteen stamps, fresh and with full original gum, VF NH **1,800.00**



1235 ★ #136, 1924 1c Yellow, Die I (Wet Printing), Imperforate A choice mint Plate A180 block of eight with full plate inscriptions, deep colour and full original gum, VF NH **1,000.00**



1236 ★ #137, 1924 2c Green (Wet Printing), Imperforate A choice mint Plate A188 block of twelve stamps, fresh and with full original gum, attractive, VF NH **1,400.00**



1237 ★ #139v, 1926 2c on 3c Carmine, Die I (Dry Printing) Mint block of four with one-line provisional surcharge essay; larger size on top pair and normal size surcharge on bottom pair, edge of sheet margin at left, otherwise nicely centered and with full original gum. A very scarce multiple, as most known are in vertical pairs, VF LH **2,500.00**

1927 CONFEDERATION AND HISTORICAL



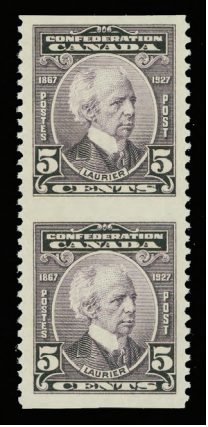
1238 ★ #141a-145a, 1927 1c-12c 60th Anniversary of Confederation An attractive and selected mint set of five horizontal imperforate pairs, fresh colours and full even margins. A nice set, VF LH 800.00



1239 ★ #141b-145b, 141c-145c, 1927 1c-12c 60th Anniversary of Confederation Mint set of five horizontal pairs imperforate vertically, plus mint set of five vertical pairs imperforate horizontally; from former set the 12c is from top edge of the sheet; all pairs are nicely centered, fresh and with full original gum. VF LH 1,600.00



1240 ★ #141c-145c, 1927 1c-12c 60th Anniversary of Confederation A choice and well centered mint set of five vertical mint pairs, imperforate horizontally, fresh and with full original gum, VF NH 1,200.00



X1241



X1243

- 1241 ★ #141c-145c, 1927 1c-12c 60th Anniversary of Confederation Post office fresh mint set of five vertical pairs, imperforate horizontally, well centered and with full original gum. A choice set, VF NH **1,200.00**



- 1242 ★ #144c, 1927 5c Sir Wilfrid Laurier An impressive mint Plate A2 block of eight, imperforate horizontally, well centered and fresh, full original gum, never hinged. A very rare plate multiple, ideal for exhibition, VF NH **Est. 1,500.00+**
- 1243 ★ #146c-148c, 1927 5c, 12c and 20c Historical Issue Lovely fresh and selected mint set of three vertical mint pairs, imperforate horizontally, all well centered with sheet margin on one side, full original gum, VF LH **480.00**

Call us toll free in North America
Dial 1(800) 667-8267
or
Fax us 1(888) 867-8267

1928 – 1929 KING GEORGE V “SCROLL”



1244 ★ #149-159, 1928-1929 1c-\$1 King George V "Scroll" Post office fresh and complete mint set of eleven all in blocks of four, F-VF NH **6,050.00**



1245 ★ #149b-159a, 1928-1929 1c-\$1 King George "Scroll" A beautiful and complete mint set of eleven horizontal imperforate pairs, full to large margins all around, lovely fresh colour and crisp; 50c with trivial gum wrinkle on left stamp, mentioned for strict accuracy only. A scarce and desirable set, VF NH **5,200.00**



- 1246 ★ #149d-159b, 1928-1929 1c-\$1 King George V "Scroll" A gorgeous fresh and complete mint set of eleven horizontal pairs, imperforate vertically, all well centered, fresh and crisp; 3c has a very light hinge mark, otherwise all remaining pairs with full pristine original gum, never hinged. A beautiful set, seldom offered in such nice quality, VF-XF NH **5,250.00**



- 1247 ★ #149c, 1928 1c Orange King George V "Scroll" Two imperforate booklet panes of six, tete-beche setting with narrow vertical gutter margin between panes, sheet margins at sides, fresh and with full original gum, choice and seldom seen, VF LH **1,350.00**

IMPERFORATE TETE BECHE BOOKLET PANES



1248 ★ #149c, 150c, 153c, 1928-1929 1c, 2c & 5c King George V "Scroll" A beautiful and fresh mint of three imperforate tete-beche booklet panes of six, all three selected with sheet margins at sides and large margins on other two sides, full original gum; 1c and 2c lightly hinged in margins only, leaving stamps never hinged; 5c is lightly hinged twice at top. A nice and sought-after set, VF **5,400.00**



- 1249 ★ #150b/157a, 1928-1929 2c/20c King George V "Scroll" Lot of five different imperforate mint blocks of four; 2c, 5c, 10c, 12c and 20c, all with large margins, fresh and with full original gum. A scarce group, VF NH **3,000.00**



- 1250 ★ #155c-159c, 1928-1929 10c-\$1 King George V "Scroll" Mint set of the five high values, vertical pairs imperforate horizontally, all nicely centered, fresh and with full original gum, scarce, VF NH **3,975.00**

- 1251 ★ #155a, 155b, 155c, 1928 10c Green Mount Hurd Lot of three mint items which includes vertical imperforate pair; a vertical pair imperforate horizontally, and upper right sheet corner block of four imperforate vertically, all well centered, VF NH *(Not Illustrated)* **1,500.00**



- 1252 ★ #157, 1929 20c Dark Carmine Harvesting A stunning mint example, precisely centered within balanced large margins, post office fresh and with full pristine original gum, never hinged. A superb stamp, XF NH GEM **180.00+**



1253



1254



1255

- 1253

★

#158, 1929 50c Dark Blue Bluenose Remarkably well centered mint block of four, very fresh and with full pristine original gum. A choice multiple in top-quality, XF NH

2,800.00
- 1254

★

#158, 1929 50c Bluenose Very well centered mint block of four, fresh and crisp with full unblemished original gum, never hinged and choice, VF NH

2,800.00
- 1255

★

#158, 1929 50c Bluenose Nicely centered mint Plate A2 block of four with full inscriptions, lovely fresh colour and full original gum, top pair is lightly hinged, bottom pair never hinged, VF

2,400.00



- 1256 ★ #158a, 159a, 1928 50c Dark Blue Bluenose and \$1 Olive Green Parliament High and key values of the set in vertical imperforate mint pairs, both with sheet margin at right, fresh colours and with full original gum, both in choice condition, VF NH **2,850.00**



- 1257 ★ #158a, 159a, 1928 50c Bluenose and \$1 Olive Green Parliament Vertical imperforate mint pair, both with full even margins, lovely fresh colours and with full pristine original gum, never hinged. A choice duo, VF NH **2,850.00**



- 1258 ★ #158b, 1928 50c Bluenose Very well centered and fresh horizontal mint pair, imperforate vertically, with full original gum, choice, XF NH **1,500.00**



1259 ★ #158b, 1928 50c Bluenose Lovely fresh horizontal mint pair, imperforate vertically, full original gum, VF NH 1,500.00



1260 ★ #158c, 159c, 1929 50c Bluenose and \$1 Parliament Both in well centered vertical mint pairs, imperforate horizontally, fresh and with full original gum, VF NH 2,850.00



1261



1262



1263

1261 ★ #159, 1929 \$1 Olive Green Parliament Very well centered mint example with lovely rich colour on fresh paper and possessing full unblemished original gum, never hinged. A tough stamp to find in choice condition, VF NH 900.00

1262 ★ #159, 1929 \$1 Olive Green Parliament Exceptionally well centered mint example, lovely fresh colour and with full original gum. A difficult stamp to find in such top-quality, XF NH 900.00

1263 ★ #159, 1929 \$1 Olive Green Parliament Exceptionally well centered mint example of this challenging stamp, lovely fresh colour and crisp impression on fresh paper and possessing full original gum. A choice stamp, XF NH 900.00



1264



X1265

- 1264 ★ #159b, 1928 \$1 Olive Green Parliament A choice and large margined horizontal imperforate mint pair, fresh and crisp, with full pristine original gum, XF NH **1,350.00**
- 1265 ★ #160i-161i, 1929 1c and 2c King George V "Scroll", Perf 8 Vertically Mint set of two paste-up coil pairs, well centered for these, VF NH **550.00**

1930 – 1931 KING GEORGE V "ARCH"



- 1266 ★ #162-177, 1930-1931 1c-\$1 King George V "Arch" A beautiful and complete mint set of sixteen, all in blocks of four, reasonably centered to well centered, fresh colours, full original gum, each block with two stamps never hinged which is generally the bottom pair. A nice and seldom encountered set in blocks, F-VF **3,430.00**



- 1267 ★ #162-177, 1930-1931 1c-\$1 King George V "Arch" Lovely fresh and complete mint set of sixteen stamps; plus the second Die on 1c green and 2c brown, and 5c violet (flat press). All in blocks of four, many stamps being well centered, and all with full original gum. Seldom encountered set in blocks, F-VF LH **2,485.00**



- 1268 ★ #174a-177a, 1930 12c-\$1 King George V "Arch" Set of four high values of the set in imperforate mint singles, all with large even margins and full original gum, VF NH **Est. 500.00+**



1269



1271

- 1269 ★♦ #174, XF-SUPERB (95) 1930 12c grey black Citadel, a very well centered mint example with fresh colour and full original gum, never hinged. 2009 Sismondo cert. Graded 95 XF-Superb **80.00+**
- 1270 ★ #174a, 1930 12c Grey Black Quebec Citadel A choice vertical imperforate mint pair with full to large margins, fresh and crisp impression, full original gum, VF LH (Illustrated on Page 78) **1,250.00**
- 1271 ★♦ #175, XF-SUPERB (95) 1930 20c brown red Harvester, a very well centered and fresh mint example with full original gum, never hinged. 2009 Sismondo cert. Graded 95 XF-Superb **120.00+**



- 1272 ★ #176, 177, 1930 50c Dull Blue Grand Pré and \$1 Dark Olive Green Mt. Edith Cavell High values in mint blocks of four, both with fresh colours and reasonably centered, full original gum, never hinged, almost Very Fine centering **3,300.00**



- 1273 ★ #176, 177, 1930 50c Dull Blue Grand Pré and \$1 Dark Olive Green Mt. Edith Cavell High and key values of the set in mint blocks of four; 50c with sheet margin at right; both reasonably centered, lovely fresh colours and with full original gum, F-VF NH **3,300.00**



1270



1274



1275

- 1274 ★ #176a, 1930 50c Dull Blue Grand Pré Vertical imperforate mint pair in premium condition with large even margins, fresh and with full original gum, XF LH **1,250.00**
- 1275 ★ #177a, 1930 \$1 Dark Olive Green Cavell Lovely fresh and crisp vertical imperforate mint pair, full to large margins and with full original gum, very lightly hinged on top stamp, VF+ **1,250.00**
- 1276 ★ #178, 1930 1c Orange King George V "Arch" Wholesale lot of over 250 coil stamps, all mint never hinged, many in pairs or strips of four or larger, centering ranges from very good-fine or fine. Catalogue value over *(Not Illustrated)* **2,500.00+**



1277



1280

- 1277 ★♦ #190, XF-SUPERB (95) 1931 10c dark green George Etienne Cartier, very well centered for the issue, lovely fresh colour and impression, full pristine original gum, never hinged. 2009 Sismondo cert. Graded 95 XF-Superb **50.00+**



- 1278 ★ #195c-200a, 1932 1c-8c King George V "Medallion" A pristine fresh and choice mint set of six imperforate pairs, all with lovely fresh colour; 1c, 2c and 3c printed by rotary press with characteristic rippled white original gum; 4c, 5c and 8c printed by flat press and with characteristic brown original gum. A nice set, XF NH **4,200.00**



- 1279 ★ #199i, 1932 5c Dark Blue King George V "Medallion" Upper right sheet corner mint block of four, showing the Major Re-entry (Plate 1 UL; Position 10), stamps are never hinged, VF **300.00**
- 1280 ★♦ #200, XF-SUPERB (95) 1932 8c red orange King George V "Medallion", very well centered for the issue, rich colour and crisp impression, possessing full immaculate original gum, never hinged. 2009 Sismondo cert. Graded 95 XF-Superb *(Illustrated on Page 78)* **130.00+**



- 1281 ★ #208iv, 1934 3c Jacques Cartier Wide margined gutter horizontal strip of four, reasonably centered, fresh and with full original gum, F-VF NH **625.00**



1935 SILVER JUBILEE



1282 P #211-216, 1935 1c-13c Silver Jubilee Issue Complete set of six plate proof multiples; 1c, 2c, 3c, 5c and 10c are in blocks of eight with vertical gutter margin between blocks of four; 13c as a block of four - vertical gutter margin multiples on this denomination does not exist. All in issued colour on card mounted india paper, choice and very scarce, VF-XF 6,600.00



1283 ★ #211-216, 1935 1c-13c Silver Jubilee Issue Complete set of six plate proof pairs on card mounted india paper; 1c, 2c and 5c are in horizontal pairs with sheet margin at right; 3c, 10c and 13c are in vertical pairs with sheet margin at foot. A choice set, XF 1,350.00



1284 ★ #211a-216a, 1935 1c-13c Silver Jubilee Issue Complete mint set of six horizontal imperforate pairs, all with bright colours, light overall gum disturbance, otherwise fresh and choice, VF OG 2,400.00



X1285



1286

1285 ★ #213, 214, 1935 3c and 10c Silver Jubilee Lot of four selected plate blocks of ten stamps; 3c LR Plate 2; 10c UL, LL and LR all from Plate 2. Fresh, centered and with full original gum, VF NH
(Not Illustrated) 715.00

1286 ★ #213a, 1935 3c Carmine Silver Jubilee Vertical imperforate mint pair with full even margins and full original gum, XF NH 600.00



1935 KING GEORGE V "PICTORIAL"



- 1287 P** #217-222, 1935 1c-8c King George V An attractive set of six plate proof blocks of eight, each showing horizontal gutter margin, on card mounted india paper, each block is neatly folded between first and second row as are all known. A very scarce set, ideal for exhibition, VF **Est. 3,500.00**



- 1288 ★** #217-227, 1935 1c-\$1 King George Pictorial Issue Well centered and complete mint set of eleven in blocks of four; the One dollar is from the lower left sheet corner and 50c with sheet margin at left; all fresh and with full original gum, VF NH **1,280.00**
- 1289 ★** #223-227, 1935 10c-\$1 Pictorial Issue Mid and high values of set in well centered mint blocks of four; the One dollar is from the lower left sheet corner; all with full original gum, VF NH
(Not Illustrated) **1,185.00**
- 1290 ★** #223-227, 1935 10c-\$1 Pictorial Issue Mid and high values of set in well centered mint blocks of four; the One dollar is from the lower left sheet corner; all with fresh colours and full original gum, VF NH
(Not Illustrated) **1,185.00**



- 1291 ★ #223, 224, 225, 1935 10c, 13c and 20c Pictorial Four different mint plate multiples, which includes 10c LL Plate No. 1 block of six (VF NH); 13c UL Plate No. 2 strip of ten (VF NH); 20c UL Plate No. 2 block of six (VF LH) and 20c LL Plate No. 2 block of eight (VF NH) **975.00**



- 1292 ★ #226a, 1935 50c Dull Violet Parliament, Victoria, B.C. A choice vertical imperforate mint pair with full to large margins and full original gum, XF NH **450.00**
- 1293 ★ #227, 227i, 1935 \$1 Blue and Pale Blue Shade Champlain Statue Nicely centered and fresh mint blocks of four with distinctively different shades, VF NH *(Not Illustrated)* **1,200.00**



- 1294 ★ #227i, 1935 \$1 Pale Blue Shade Champlain Statue Well centered and fresh mint Plate No. 1 block of six from top sheet margin, full original gum and choice, VF NH **1,050.00**



1937 – 1953 KING GEORGE VI ERA



- 1295 ★ #231-236, 241-245, 1937 1c-8c King George "Mufti" and 1938 10c-\$1 Pictorial Complete mint sets, all in blocks of four; 10c is the rose carmine shade, 10c to \$1 are in lower left plate blocks; 50c and \$1 each with two stamps lightly hinged, two stamps never hinged, all others are never hinged, VF **1,340.00**



1296



1297

- 1296 ★ #241b, 1938 10c Dark Carmine Memorial Chamber Imperforate upper right Plate No.2 block of four, tiny black spot well away from stamps in right sheet margin, negligible, fresh colour and with full original gum, never hinged. A rare and sought-after plate imperforate multiple, VF NH **3,600.00**
- 1297 ★ #241b, 1938 10c Dark Carmine Memorial Chamber A choice imperforate mint pair with full even margins and full original gum, XF NH **1,125.00**

- 1298 ★ #242-245, 1938 13c-\$1 Pictorial Issue Partial mint set of four in blocks of four, well centered, fresh colours and with full original gum, VF NH *(Not Illustrated)* **1,350.00**



- 1299 P #246, 1939 1c Green & Black HRH Elizabeth & Margaret Royal Visit Large die proof in issued colours on india paper, 95 x 87mm, die sunk on full size card, measuring 229 x 152mm, with die "XG-685" number and imprint below, very scarce and choice, XF **Est. 1,250.00**

- 1300 ★ #268-273, 1946 8c-\$1 Peace Issue Mint plate blocks, all mint never hinged (except as noted), includes matched set of 8c Plate 1 and Plate 2; 10c Plate 1 (UR is LH) and Plate 2; 14c Plate 1; 20c Plate 1 (UL is LH) and Plate 2; 50c Plate 1 (all LH); and \$1 Plate 1 (UL is hinged). Mainly F-VF or better, high catalogue value *(Not Illustrated)* **Est. 600.00+**



- 1301 ★ #273, 1946 \$1 Train Ferry Matched set of Plate No. 1 blocks of four, all centered, fresh and with full original gum, VF NH **1,800.00**



- 1302 P** #276, 4c Princess Elizabeth Large trial colour die proof engraved in purple brown on india paper mounted on card, 73 x 85mm; an unadopted design measuring smaller than the issued stamp, rare and first one we have seen, VF, ex. *Sir Gawaine Baillie* **Est. 1,500.00**



Images have been cropped to show detail of both proofs

- 1303 P** #293, 1950 5c King George VI "POSTES - POSTAGE" Omitted Large die proof printed in issued colour as well as a large trial colour die proof printed in black; both measuring 75 x 74mm on card mounted india paper, affixed on larger presentation card and showing same die "XG881" number at top and "CANADIAN BANK NOTE COMPANY, LIMITED" imprint at foot. A very scarce duo, ideal for the advanced King George VI era collector, VF **Est. 2,000.00**

ELIZABETHAN
MODERN ERRORS AND VARIETIES



1304 ★ #454f, 1971(circa.) 1c Brown Centennial, LF, PVA A rare example PRINTED ON GUM SIDE, mint and well centered. It has been reported that one pane of 100 was printed, and according to an advanced collector of this issue only about 70 examples still exist, a sought-after modern error, VF NH, undercatalogued **1,200.00+**



1305 ◎ #460aiii, 1970 6c Black Centennial, Die I (BABN Printing) on Hibrite Paper, Perf 10 A remarkable complete used booklet pane of twenty-five stamps plus two labels, neatly cancelled by South Ohio, N.S. (MR 6 70) split ring cancellations and in an excellent state of preservation. According to the Unitrade catalogue, only one pane on hibrite paper has been reported, which may well be the one offered here. An absolute showpiece for the Centennial Issue collector, VF **4,500.00+**



1306



1307

- 1306 ★ #460fpiv + variety, 1972 6c Black (CBN Printing), Die Ia, LF, GT2 (3mm) Right sheet margin mint block of four, showing a dramatic perforation shift (3mm to left and slanting; 8mm down). A nice and striking multiple, Mint NH Est. 200.00+**
- 1307 ★ #727 + variety, 1979 \$2 Kluane National Park Lower right Plate No. 2 block of four showing a perforation shift (2mm to right) as well as a striking shift of the silver inscriptions (7mm to left), results in the plate imprint showing in the margin. An interesting variety, F-VF NH Est. 500.00+**

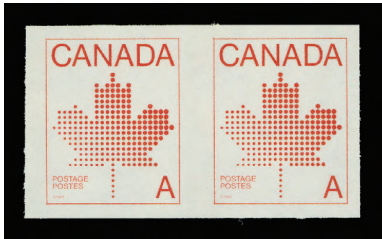


1308



1309

- 1308 ★ #841a, 1979 (35c) Knitted Stuffed Doll Mint block of four, with missing gold and tagging omitted error, very scarce especially in a multiple, striking, VF NH, 2009 Greene Foundation cert. 7,000.00**
- 1309 ★ #841a, 1979 (35c) Knitted Stuffed Doll Left sheet margin mint single with gold inscriptions and tagging completely omitted, striking, a very scarce major error with less than 120 examples known, VF NH 1,750.00**



1310



1311

- 1310 ★

#908a, 1981 "A" Red Maple Leaf Imperforate mint pair, scarce, VF NH

500.00
- 1311 ★

#1166ii, 1989 39c Flag over Clouds (CBN Printing) Imperforate mint pair with enormous margins all around, full original gum, choice, XF NH

750.00



- 1312 ★

#1174i, 1989 59c Musk Ox on Slater Paper, Perf 14.4x13.8 A very scarce matched set of plate inscription blocks of four, VF NH

1,000.00



- 1313 ★

#1357i, 1991 42c Queen Elizabeth (Ashton-Potter Printing) Imperforate mint pair with large margins, pristine and with full original gum, scarce, XF NH

1,000.00



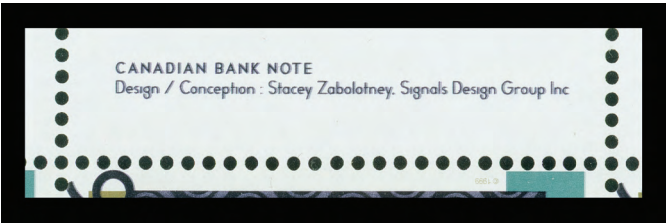
- 1314 ★

#1362ii, 1362iii, 1998 45c Flag over Building (CBN Printing; Small Format), Imperforate Bottom of sheet mint strip of twenty (10x2), showing horizontal gutter margin between fifth and sixth column, sheet margin on three sides, in pristine condition and rare thus as most of these errors have wrinkles and creases. An impressive multiple, VF NH

13,100.00

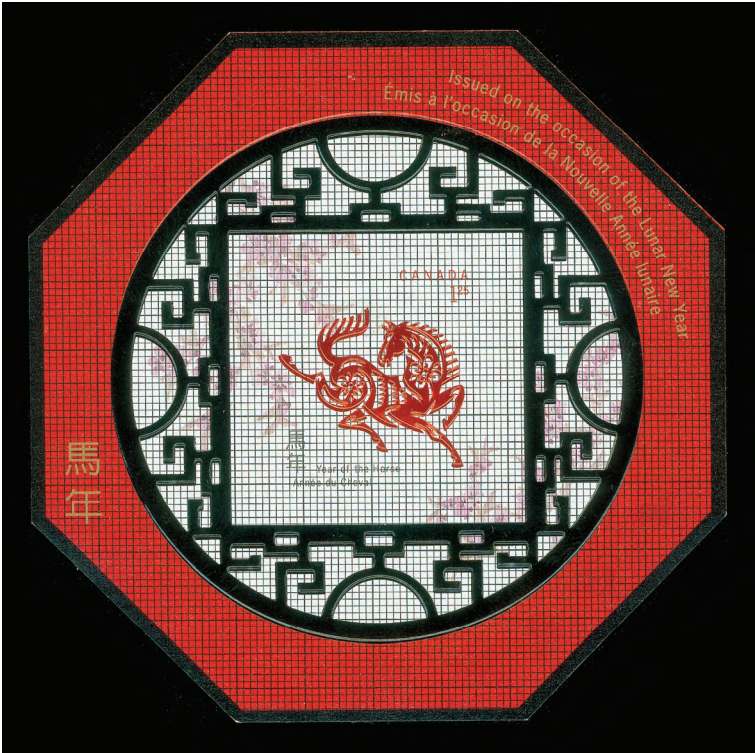


- 1315 ★ #1535ii, 1994 90c Outdoor Carolling Mint single of unissued denomination printed in anticipation of a rate increase, VF NH **600.00**



-Details-

- 1316 ★ #1786 + variety, 1999 46c Sikh Canadians Mint sheet of sixteen stamps, with strong multi-coloured "Kiss Print" resulting in doubling that is most noticeable on dark blue "46", red "Canada" and plate imprint, unlisted in Unitrade, VF NH **Est. 300.00**



- 1317 E #1934, 2002 \$1.25 Year of the Horse Imperforate souvenir sheet essay, with overall quadrille grid, embossed and untagged, scarce, VF NH **850.00**

BOOKLETS



1318



1319

- 1318 ★ #BK3Ce, 1913 1c Green with Green on Pale Green Covers** Complete booklet in English with dark green tape under staple, containing four panes of six, fresh and never hinged, with small serified Type II inside information sheets (36mm wide), covers are unmarked and clean, VF **375.00**

- 1319 ★ #BK3Cf, 1913 1c Yellow Green with Green on Pale Green Covers** Complete booklet in French with dark green tape under staple, containing four panes of six stamps, fresh and never hinged, with small serified Type II inside information sheets (34mm wide), small surface thin spot along bottom edge of booklet (negligible), otherwise clean and unmarked, almost Very Fine **500.00**



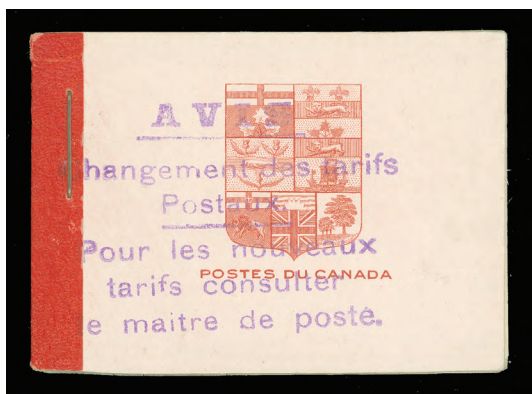
1320



1321

- 1320 ★ #BK3eE + variety, 1913 1c Green with Green on Pale Green Covers** Complete booklet in English with dark green tape under staple, containing all four panes of six stamps, reasonably centered, fresh and never hinged, with rate change handstamp DOUBLE OVERPRINT on front cover, with small serified Type II inside information sheets (36mm wide), faint crease along green tape, otherwise clean and fresh. An interesting item for the advanced collector, F-VF (Catalogue value is for normal booklet) **250.00+**

- 1321 ★ #BK5cE, 1912 2c carmine Red on Pink Covers** Complete booklet in English with bright red tape under staple, containing both panes of six stamps, well centered and with lovely fresh colour, with small serified Type I inside information sheets (36mm wide), clean and unmarked covers, choice, VF NH **300.00**



1322



1323

- 1322 ★ #BK5Ff, 1916 2c Carmine with Red on Pink Covers** Complete booklet in French with red tape under staple, containing both panes of six stamps, centered and fresh and never hinged, with rate change handstamp overprint on front cover, with small serifed Type II inside information sheets (34mm wide), clean and unmarked covers, VF NH **337.50**

- 1323 ★ #BK6Ce, 1922 2c Green with Black on Green Covers** Complete booklet in English with no binding tape under staple, containing two panes of six stamps (wet printing), rich colour, slogan on inside insert pages (small capitals 3.5mm high), covers are fresh and unmarked, scarce thus, VF NH **1,875.00**



1324



1325

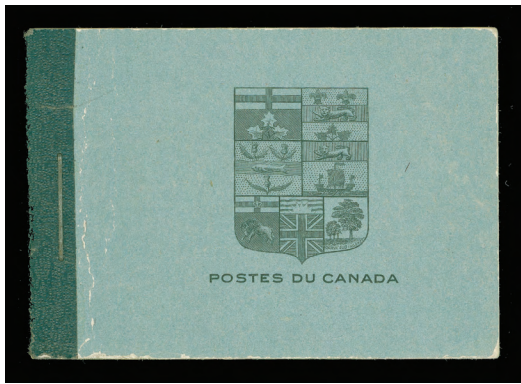
- 1324 ★ #BK7aE, 1922 3c brown Dark Brown on Brown Covers** Complete booklet in English, with dark brown tape under tape, with both panes of six stamps, fresh and never hinged, sans serif capitals and war tax rate sheets inside, light crease on front and on back cover, an elusive and seldom offered booklet, F-VF **750.00**
- 1325 ★ #BK9aE + variety, 1922 1c, 2c & 3c brown Black on Dull Blue Covers** Complete booklet in English with dark green tape under staple, containing all three panes of four stamps plus two labels, fresh and never hinged, with sans serif capitals and war tax rate sheets inside (inside front cover text is clearly double printed - striking and most unusual), some ink notation on back cover only, a scarce booklet, ideal for the specialist, F-VF (Catalogue value is for basic booklet only) **750.00**

Call us toll free in North America

Dial 1(800) 667-8267

or

Fax us 1(888) 867-8267



1326



1327

- 1326 ★ **#BK9aF, 1922 1c, 2c & 3c brown Black on Dull Blue Covers** Complete booklet in French with dark blue green tape under staple, containing all three panes of four stamps plus two labels, fresh and never hinged, with sans serif capitals and war tax rate sheets inside, light vertical crease along binding tape, a very scarce booklet, F-VF **1,200.00**
- 1327 ★ **#BK10cE, 1923 1c, 2c & 3c carmine Black on Blue Covers** Complete booklet in English (no tape under staple) containing all three panes of four stamps plus two labels, reasonably centered, fresh and with full original gum, never hinged, including all insert pages (small slogan text 3.5mm high), booklet covers are fresh, clean and unmarked. Scarce so nice, VF NH **900.00**

AIRMAIL, SPECIAL DELIVERY AND POSTAGE DUES



- 1328 ★ **#C1a, 1928 5c Brown Olive Allegory** Horizontal imperforate mint pair with sheet margin at top, fresh and with full original gum, VF NH **525.00**



- 1329 P **#E1, 1898 10c Blue Green Special Delivery** A scarce plate proof pair in issued colour on card mounted india paper, with sheet margin at left and full margins on other sides, only 73 proofs exist and much less are in sound condition, VF **Est. 1,500.00+**



- 1330 ★ #E3a, 1927 20c Orange Confederation** Left-hand side imperforate Plate A1 mint block of four with upper left sheet corner imperforate block of four as a companion, both multiple with fresh colours and full original gum, latter with small gum wrinkle in top sheet margin, well away from stamps, VF NH
2,000.00+



1331



1332

- 1331 ★ #E4, 1930 20c Henna Brown** Mint single showing a dramatic and overall printing ink smear, interesting and striking, Fine LH
Est. 200.00+
- 1332 ★ #E5, 1932 20c Henna Brown** Seldom seen and very fresh upper right Plate No. 1 mint block of four, lightly hinged in top selvage only, stamps are never hinged, VF
400.00+



- 1333 ★ #J11b-J4b, 1925 1c, 2c and 5c Violet Postage Due Lovely fresh and complete set of three imperforate pairs, all with large margins, 2c and 5c with sheet margin at left, unused without gum as issued. A choice set, XF 1,500.00



1334



1335

- 1334 ★ #J1c, 1928 1c Reddish Violet (Dry Printing) A choice and well centered mint block of four, fresh and with full original gum, never hinged. Seldom seen so nice, VF NH 320.00
- 1335 ★ #J11a, 1934 1c Dark Violet Postage Due Imperforate mint block of four from bottom sheet margin, pristine fresh and with full original gum, scarce, VF NH 2,000.00



- 1336 ★ #J11a, 1933-1934 1c Dark Violet Postage Due A choice imperforate mint pair with sheet margin at left and full margins on other sides, fresh and crisp, with full immaculate original gum, VF NH 1,000.00



KING GEORGE V "ADMIRAL" WAR TAX

- 1337 ★ **#MR1/MR7iii, War Tax Mint Issues** Lot of ten different mint never hinged singles: MR1-MR2, MR3, MR3b, MR4, MR4i, MR6, MR6ii, MR7 and MR7iii (minor gum wrinkle), F-VF
(Not Illustrated) **1,855.00**



1338



1339

- 1338 ★ **#MR2C, 1915 20c Olive Green (Wet Printing) with "WAR TAX" Overprint** A remarkable mint example, uncommonly well centered within large margin, deep rich colour on fresh paper and possessing full original gum, never hinged. A difficult "Admiral" Issue to locate in premium condition, VF+ NH, 1996 Greene Foundation cert. **450.00**
- 1339 ★ **#MR2D, 1915 50c Black (Wet Printing) with "WAR TAX" Overprint in Red** Extremely well centered mint example of this most challenging stamp, lovely fresh colour and impression on bright fresh paper, possessing full original gum that has been never hinged. This stamp easily ranks among the toughest of all Admiral Issues to find in such top-quality, XF NH, 1993 Greene Foundation cert. **1,400.00+**



- 1340 ★ **#MR2Bi, 1915 5c Dark Blue (Wet Printing) with "INLAND REVENUE WAR TAX" Overprint in Black** A remarkable Plate No.6 block of six, right-hand side block of four with full imprint at top is unusually well centered, which has rich colour and deep impression, and possessing full pristine original gum, never hinged. A rare plate multiple, especially in such nice quality - for the advanced collector, F-VF NH **Est. 1,500.00+**



1341



1342

- 1341 ★ #MR3a, 1916 2c+1c Dark Carmine, Die II (Wet Printing) A scarce mint block of four, sheet margin at foot with printing order number "937F", reasonably centered, characteristic deep rich shade, full original gum, two stamps very lightly hinged and two stamps never hinged, F-VF **1,300.00**
- 1342 ★ #MR5, 1916 2c+1c Carmine, Die I (Wet Printing), Perf 12x8 Upper left Plate A2 mint block of eight, reasonably centered, deep fresh colour and with full original gum, left edge vertical pair is lightly hinged, others are never hinged. A scarce plate multiple, F-VF **Est. 750.00**



- 1343 ★ #MR6, 1916 2c+1c Carmine, Die I (Wet Printing), Perf 8 Vertically Quite well centered mint coil strip of four, lovely fresh colour and possessing full original gum, never hinged. Tough to find in such nice condition, VF NH **2,400.00**



- 1344 ★ #MR7, 1916 2c+1c Brown War Tax, Die II (Wet Printing), Perf 8 Vertically A choice and well centered mint coil strip of four, rich colour and with full immaculate original gum. Tough to find in such nice condition, VF NH **720.00**



OFFICIALS AND OFFICIALLY SEALED



- 1345 ★ #O9, 1949-1950 50c Lumbering "O.H.M.S." Official Overprint Very centered mint block of four, fresh and with full pristine original gum, VF NH **1,320.00**



1346



1347

- 1346 ★ #O10, 1949-1950 \$1 Train Ferry, "O.H.M.S." Official Overprint Well centered upper left Plate 1 block of four, mint with full pristine original gum, choice, VF NH **900.00**
- 1347 ★ #O25, 1950-1951 \$1 Train Ferry "G" Official Overprint Upper right Plate No. 1 mint block of four, fresh, VF NH **1,000.00**
- 1348 P #OX2, 1902-1907 Black Victoria Officially Sealed Plate proof single printed in issued colour on card mounted india paper, scarce and choice, VF *(Illustrated on Page 76)* **Est. 750.00+**
- 1349 ★ #OX3, 1907 Black Victoria Officially Sealed Mint on white wove paper, reasonably centered, with portion of imprint "A - No - 1" at top, fresh and with full original gum, attractive, F-VF NH *(Illustrated on Page 76)* **240.00+**
- 1350 ★ **BAR PRECANCELS Collection of Warning Plate Strips** Neatly displayed in black mounts on pages, with 22 Warning precancelled plate inscription strips of twenty stamps from the Centennial issue, mostly different (left and / or right hand side; paper varieties) and also 22 different Warning strips from Centennial to Floral issue. A clean lot which appears all NH, VF *(Not Illustrated)* **Est. 300.00+**
- 1351 ★ **CANADA REVENUES #FWT8f, 1915 2c Brown King George V War Tax** Complete booklet with red binding tape under staple, containing all eight panes of six stamps, all centered and fresh, unmarked and clean covers, choice, VF NH *(Illustrated on Page 76)* **150.00+**



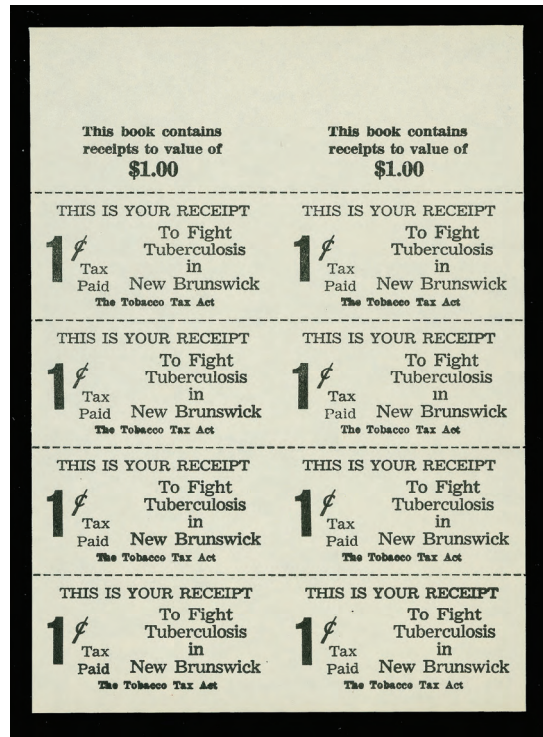
1348



1349



1351



1352



X1353



-X1354-



- 1352 ★ CANADA REVENUES #NBT1c, 1940 (Value at Left) 1c Black on White New Brunswick Tobacco Tax Rouletted horizontally, two booklet panes side by side, imperforate vertically between panes, unwatermarked and ungummed as issued, very scarce. Now listed but still unpriced in Van Dam catalogue (2009 edition), very scarce thus, VF **Est. 500.00+**
- 1353 ◎ CANADA REVENUES #NSC14, 1922 25c Red (White Background) Horizontal pair on 1952 Statement of Claim from Cape Breton tied by embossed albino seal and each stamp dated by pen, left stamp with filing fold, otherwise very scarce multiple usage of issue on document; also 1952 Civil Court single-page document bearing 25c red (white background) single with major misperforation also tied by albino seal and pen cancelled; and one single (upper right position of booklet pane) on small piece. A very scarce trio, F-VF **Est. 500.00**
- 1354 LOCALS Canadian Philatelic Fantasies Interesting collection of 25 different, few with small flaws, identified and with write-up by collector on two quadrilled pages. Includes Baldwin's Railroad Postage (8), Bancroft's City Express (3), Bell's Dispatch (4), Ker's City Post (7) and Le Beau's City Post (2). Colourful and attractive, Fine to Very Fine **Est. 500.00+**



CANADA LARGE LOTS AND COLLECTIONS



- 1355 ★◎ Valuable and Comprehensive 1851-1951 Used Collection** Mostly mounted on Jarrett album pages, starting with better early Pence issues #1, 2 (small margins; sound), 4 (fresh and with four margins), #5 (clear to large margins, fresh and sound), #7, #9 (small margins but sound), #12 with fancy "3" rate handstamp (unusual), complete basic sets of the Cents and Large Queens, Small Queens; complete Jubilee set to the \$5 (high values with usual smudge or roller cancels), complete from Queen Victoria "Leaf" to 1951, etc. Mixed condition on pre-1900 era, and mainly Fine or better for post-1900 period. A valuable lot worth careful inspection. **Est. 2,500.00+**



- 1356 ★◎ Extensive and Clean Mint / Used 1851-1987 Collection** Several hundred different mint / used stamps, all in clear mounts on quadrilled album pages, starting with a used #2 (slightly into design otherwise sound and with blue ring cancel), #14/20 basic used set of six, used Large and Small Queens (shades and printings, mixed condition), mint #50-60; Leaf, Numeral and Edward VII used sets, mint 1908 Quebec set, some Admiral with better mint coils, "Scroll" issue mint to the 50c Bluenose. Appears complete mint from 1931 to 1987 including coil issues and a comprehensive showing of the Centennial issues, including printings, papers, taggings, coils, precancels, etc. Noted a used 6c orange lithographed forgery; also mint airmails, special delivery, dues, a mint F3 and complete mint overprinted officials. Overall quality ranges from Fine or better on earlier pre-1927 era and generally F-VF afterward. High catalogue value. Inspect. **Est. 1,500.00+**
- 1357 ★◎ Mint and Used Dealer Stock** Small three-ring binder displaying better valued items in 115 cards on double sided (six pocket) pages, majority is mint from Small Queens to 1940s, including some Back-of-Book. Noted some light duplication and multiples in places and some flaws to be expected mostly in Victoria era, otherwise many better centered and/or NH. Owner's Unitrade catalogue value (couple years old) over \$12,000. A useful lot for a dealer. *(Not Illustrated)* **Est. 1,250.00+**

- 1358 ★◎ Mostly Used 1851-1960 Collection** Green Scott album with several hundred different stamps, starting with #1 vertical pen cancelled pair, close to large margins, small flaws; followed by a wide range of Large and Small Queens used (mixed condition), Jubilee mint AND used set up to \$1, well covered and mostly used from 1897 "Leaf" to 1960, back-of-book where we noted a nice mint MR2D (F-VF NH), some better officials, etc. Also includes Provinces with some New Brunswick and Nova Scotia, plus nice representation of Newfoundland where we noted used #61-74, mint #115-126, 131-144, 146-159, 212-225, etc. Condition in the Canada is mixed but noted some nice stamps throughout; Provinces and Newfoundland is generally Fine or better. Needs checking.

(Not Illustrated) **Est. 1,000.00+**

- 1359 ★◎ Balance of Consignment** Housed in binders, many album pages, stored in envelopes, small boxes, stockbooks, etc. with hundreds of stamps, a good percentage of the bulk is in the used duplicates off and on paper, but noted better mint KGV era mint issues on cards including high values (Scroll and Arch issues), Official and Postage Dues (both in large quantity), over a dozen of the 1970 5c Christmas centre blocks, plus some covers and much more. Careful inspection is recommended and potential for better findings. **HEAVY LOT**

(Not Illustrated) **Est. 1,000.00+**



- 1360 ★◎ Admiral War Tax Oddments** Neat specialized lot which includes MR1 Plate A1 block of 8, stamps NH; MR2 UL Plate A6 block of 6, stamps NH; MR2D NH block of four with "OTTAWA - No - " imprint at top; MR3b Plate A7 block of 4, stamps NH; also mint single MR2B-MR2D; a scarce MR2Bi used block of four, MR2C used CDS pair, MR2Ci VF used, etc. Mainly Fine to Very Fine throughout

Est. 600.00+

- 1361 ★◎ Clean Mint / Used 4-Hole OHMS and Overprinted Officials** Collection of many dozens displayed on black stockpages, includes OHMS and "G" Official overprint, complete VF used CDS from O1 to O49, CO1-CO2 and EO1-EO2, plus a few pages of duplicates used. Used 4-hole OHMS on pages (with duplicates; some in multiples), noted O237, O245, O262, airmails, etc. Also a clean mounted mint collection of 4-hole OHMS with 46 different, noted O241-O245, O241a, O249-O262, O268-O273, OC1, OCE1-OC4, OE7, OE10-OE11, etc. Mainly F-VF

(Not Illustrated) **Est. 500.00+**

- 1362 ★◎ Clean Mint / Used 1897-1952 Collection** Mounted on album pages, starting with mint 1897 ½c-50c Jubilee, well represented for period covered, includes some mint Admiral issues and coils; complete regular issues from 1927 to 1952. Includes OHMS overprinted issues with better 50c Lumbering; mint / used Airmails, Dues, Special Delivery and War Tax. Also includes some more recent mint Newfoundland issues. Overall quality is quite nice and mainly F-VF

(Not Illustrated) **Est. 500.00+**

- 1363 ★◎ Consignment as Received** Includes used collection housed in a green Scott album starting from Small Queens to early 1970s, well represented from Admirals; used collection in Minkus album from 1860 Cents to 1953 (mixed condition on earlier issues); three separate used collections on Scott album pages; a few mint full sheets from late 1940s-1950s; a few pages with Canada "G" overprinted mint plate blocks; a Newfoundland mint / used collection; plus more stock on dealer cards, etc. Needs viewing.

(Not Illustrated) **Est. 500.00+**



- 1364 ★◎ Consignment as Received** Housed in two cartons, filled with folders, albums and some philatelic literature. Noted modern mint NH singles and plate blocks, "Admiral" complete mint set (mixed condition), used #46, 59, 126a & 128a blocks, used collection in Scott album, some revenues, precancels, perfin, commemorative cancels, bundles, Easter & Christmas seals, 1998 Annual collection and 2000 Millennium book both still sealed, a Raytech UV lamp (model BS-1), etc. Worth a look. HEAVY LOT
(Not Illustrated) **Est. 400.00+**
- 1365 ★◎ Duplicated Mint / Used Stock** Sorted in glassine envelopes with many hundreds mint AND used starting from 1897 Jubilee and going up to 1960s Centennial issues, noted high denominations, better issues, multiples, many mint never hinged items, etc. An old-time stock that needs further checking. High catalogue value. Mainly F-VF
(Not Illustrated) **Est. 400.00+**
- 1366 ★◎ Balance of Estate** Includes odds and ends, Canada used stock, part and full sheets from the 1940s and 1950s era, Newfoundland mint / used in glassines, unsorted and organized, a couple collection in springback albums; an old-time used Chile collection on quadrilled pages, etc. Inspect.
(Not Illustrated) **Est. 400.00+**
- 1367 ★◎ Balance of Consignment** Includes Used collection from Small Queens to modern era (mixed condition throughout); a large binder filled with mint (many corner) blocks of four, concentrated in the 1980s and early 1990s; album with few dozen different booklets mostly modern era, etc. Inspect.
(Not Illustrated) **Est. 300.00+**
- 1368 ★ Selected Mint NH High Values 1935-1946 Era** Lot which consists of mint never hinged and all well centered; #226 (28 copies), 227i (6), 244 (10), 245 (8), 245i (4), and 273 (10), VF NH lot, a lovely lot for breakdown and resale
(Not Illustrated) **6,850.00**
- 1369 ★ Valuable Mint Balance of Collection** Housed in a stockbook with issues ranging from 1897 Jubilee to 1946 Peace Issue (plus a few later) and also with airmails, special delivery and officials. Emphasis and majority of value is concentrated on 1928-1943 period in blocks of four, but also with a wealth of plate blocks and larger multiples. Starts with #52 (2 NH blocks of four), 54 NH block, 8c block of four (3 NH), 76a (VF block), 96 block of four (3 NH), 99 (NH), 99 block of four (2NH), 100 (NH), 101, 102, 103, several Admiral issues in mint blocks of four, Scroll issue from 1c to 20c in NH blocks of four, Arch issue 1c to 8c in NH blocks, 176 left centre Plate 1 block, 177 (two blocks of four; one NH and other with three stamps NH), 190 (32 stamps all VF NH - unusual), 201 VF UR Plate 1, 209 (10 copies NH, mostly VF), 227 and 227i blocks of four, 245i block of four, various single stamp sets, plus much more. Quality throughout is clean and fresh overall, centering ranges from Fine to Very Fine on pre-1930 era and mainly F-VF or better for later period. Worth a close look.
(Not Illustrated) **Est. 5,000.00+**



- 1370 ★ Substantial Mint 1860-1927 Collection** All in clear mounts on Minkus album pages, starting with Cents issue basic set of five, Large Queens (11 examples; most regummed), Small Queens up to 10c (including some Montreal printings), 20c & 50c Widow Weed, Registration 2c to 8c; 1897 Jubilee complete set, COMPLETE from 1897 Queen Victoria "Leaf" to 1927 Confederation, with some mint NH Admirals (such as 10c reddish purple, etc.) Flaws to be expected on some Victorian and King Edward VII era, but noted many sound stamps with original gum. King George V Admiral issues mainly Fine to Very Fine. Needs closer inspection. A valuable lot estimated conservatively.

Est. 4,000.00+

- 1371 ★ Valuable Lot of Full Sheets** Lot of mint full sheets which includes 1935 Silver Jubilee 1c Matched Set of Plate 1; UR, LL and LR of Plate 2; 2c UL Plate 1 and Plate 2; 3c LL Plate 1; 5c UL Plate 2; 10c UL Plate 2; 233 UR Plate 5; 1937 3c Coronation UL Plate 1 and Plate 2; 1938 10c rose carmine Memorial Chamber UR Plate 1 and LL Plate 2; 13c Halifax Harbour LL Plate 1; 1942-1943 13c Ram Tank UL Plate 1; 14c Ram Tank UL Plate 1; 1935 6c Airmail LR Plate 1; plus twelve different mint part sheet / large multiples ranging from 1928 to 1946, noted 1935 50c Parliament block of 15, 1946 50c Lumbering block of 36, etc. All mint never hinged, odd sheet with minor perf separations, otherwise overall nice and clean condition - seldom seen large offering of mint sheets, F-VF or better centering *(Not Illustrated)* **Est. 2,500.00+**



- 1372 ★ Better Mint / NH Plate Blocks from KGV and KGV1 Era** Selection of 21 better valued plate blocks of four and all mint never hinged (otherwise mentioned): 144 Plate A2 block of 8; 156 Plate A2; 171 top Plate 1 strip of twenty, lightly hinged in top selvage only; 175 UR Plate 1; 202 UR Plate 2; 203 UR and LR Plate 1; 208 UR Plate 1, 219 top Plate 8 block of 8; 243 UR Plate 2; 244 UR Plate 1(2); 245i LR Plate 1; 262 LL and UR Plate 1 (latter is LH); 273 LL Plate 1; C1 UL Plate 1 block of ten (hinged in top selvage only); O272 UL Plate 1 strip of ten; and O10 LR Plate 1. Majority VF centering and a useful lot for the advanced plate block collector. **Est. 2,000.00+**



- 1373 ★ Mint 1897-1993 Collection** Many hundreds in clear mounts on album pages housed in two large padded binders. Noted nice #67 (NH), and 72 (NH), 80 (NH), 82, 93, 96-103, 104-122, 123-124 (a few are in pairs), 149-159, 162-177, complete regular issued stamps from 1932 including coils up to 1993. Much is never hinged especially starting from 1950s to end of period covered. Includes throughout back-of-book with all Special Delivery, Dues, overprinted "OHMS" and "G" officials (only missing the \$1 Fisheries), etc. Condition throughout is quite nice and generally clean. Fine to Very Fine and worth a look. **Est. 1,500.00+**



- 1374 ★ Admiral Issue Mint Blocks and Booklet Panes** A nice lot which has a complete set of eighteen in mint blocks of four, several blocks with one to three never hinged stamps, also Part Perforate blocks of four (dry printing) 1c and 2c; War Tax MR1-MR2, MR2C, MR2Ci, MR3, MR3b, MR4, MR5 in mint blocks of four, some stamps are never hinged, also eight different booklet panes. Centering throughout ranges from Fine to Very Fine. Well worth a look. **Est. 1,500.00+**



- 1375 ★ COMPLETE Mint 1928-1953 Collection** All in clear mounts on Minkus album pages, COMPLETE regular issued stamps plus coil issues from King George V "Scroll" Issue to 1953, plus in many cases it includes coil issues in pairs on other side of the page. INCLUDES ALL Postage Dues, Special Delivery, Airmails, 4-hole OHMS (only a couple missing), and overprinted OHMS and G Officials for the period covered. Apart from the 50c Bluenose and \$1 Parliament (both LH), rest appears ALL NH. Clean and fresh throughout - offers an excellent opportunity to acquire a comprehensive collection of the late King George V and all George VI era. Mainly F-VF or better **Est. 1,500.00+**
- 1376 ★ Mint Dealer Stock** White box filled with selection cards, organized by Scott number from Queen Victoria to modern era, plus Back-of-Book, with many hundred mint stamps, some light duplication in places. A few with small flaws but noted many selected mint never hinged and/or better centered stamps, strength in the King George V and George VI era. Ideal lot for show or internet dealer. Owner's Unitrade catalogue value (couple years old) over \$13,000. *(Not Illustrated)* **Est. 1,500.00+**
- 1377 ★ Large Mint Dealer Stock** White box filled with selection cards, organized by Scott number from Queen Victoria Jubilee to modern era, plus Back-of-Book, with several hundred mint stamps; some (mostly) light duplication in places. A few early ones with flaws, but noted many selected mint never hinged and/or better centered stamps throughout; strength is in the King George V-VI era. A useful lot for any dealer. Owner's Unitrade catalogue value (couple years old) over \$14,000. *(Not Illustrated)* **Est. 1,500.00+**

Fax your Bid(s) toll free in North America
Dial 1(888) 867-8267



- 1378 ★ Lot of Early Complete Booklets** All from the King George V Admiral era, includes BK3cE (2), BK3cF, BK4bF, BK5dE, BK5dF, BK5fE (4), BK6dE (rare), BK8bE and BK9aF (rare). Some cover creases, bends or erased markings, otherwise noted many well centered panes and several are seldom seen or offered. Catalogue value as Fine \$5,825. **Est. 1,250.00**

- 1379 ★ Clean and Fresh 1928-2002 Mint NH Collection** Carefully displayed in black mounts in six brand-new White Ace three-ring albums, each with slipcase, starting from 1928-1929 Scroll Issue 1c to 20c and virtually COMPLETE from 1946 to 2002, including souvenir sheets, self-adhesives, booklet panes, etc. An ideal lot for further expansion, nice quality throughout, VF NH
(Not Illustrated) **Est. 1,000.00+**



- 1380 ★ Mint Grouping** Small stockbook and a few stockpages with representation of mainly Jubilee and King George Admiral issues, all mint. Noted mint #46 with jumbo margins, Jubilee ½c to 8c (two 6c; one is VF), 15c (VF), 50c (2; both VF), followed by mint #72 and 73, etc. Strength in the Admiral (total of 122 stamps) most with original gum, centering mostly Fine or better, noted range of shades, some coils and War Tax issues. Some flaws noted but overall quality is Fine or better. **Est. 1,000.00+**



- 1381 ★ Useful Selection of Mint NH Blocks** Group of 34 different blocks of four and four coil strips of four, virtually all mint NH (a few lower valued multiples with light gum disturbance). Includes VF NH (unless otherwise mentioned) #52, 53, 72 (F-VF), 75, 81 (F-VF), 97, 140, 161, 174, 207, 209, 229-230, E3, E8, MR4b (vertical bend on right pair), J1 (wet printing), J7, J10, J14, etc. Also includes a #138 block skillfully altered to look like a #130a. A clean and desirable lot. **Est. 1,000.00+**



- 1382 ★** **Nice Mint Coil Pairs Collection** Starting from 1913 King George V Admirals and well represented up to the 1962 Cameo Issue. Includes (ALL IN PAIRS, otherwise mentioned) #123 (NH), 124 (one stamp NH), 125-130, 131-134, 136-138 (NH), 126a and 128a in NH blocks of six, 161-162 (NH), 178-183 (NH), 228-230 (NH), 278-281 (NH), etc. A few bar precancels pairs and Wilding issue paper varieties. Centering is mainly selected F-VF or better **Est. 750.00+**



- 1383 ★** **Mint Admiral Issues in Blocks of Four** Selection of 23 blocks; which includes 104-122 (less 116), 136-138, 139-140 and 184. Five violet (on thin paper) has small faults, #140 is separating; all hinged / lightly hinged except for 136-138 bottom pairs never hinged, F-VF lot **Est. 750.00+**



- 1384 ★** **Imperforate Varieties from 1927-1935 Period** Lot which consists of ten different better mint items; #143a (NH), 143c (NH), 144a block (NH), 144c (NH), 146a-148a (disturbed OG), 226a (LH), 237a (unused; tiny thin) and C1c (LH) **Est. 750.00+**



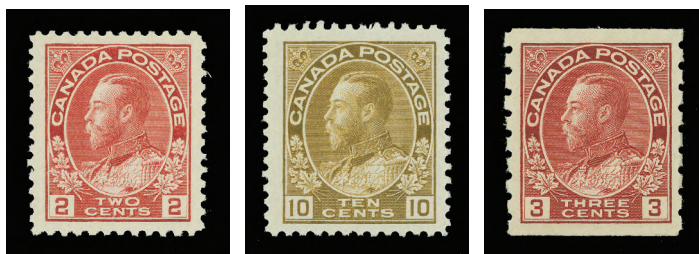
- 1385 ★ Valuable 1897-1929 Mint Selection** Group of 68 mint stamps, mostly different and all displayed on stockpage. Includes better valued stamps, such as mint #66-73, 74-84, 89-94, 90a pair, 96-103, 141-148, 149-159, 161 strip of four, two pairs, 162 pair, etc. Fine or better centering **Est. 750.00+**
- 1386 ★ Back-of-Book Selection of Mint Plate Blocks** Group consisting of 121 different positional plate blocks of four, all mint, many being NH. Includes Airmails, Special Delivery, Postage Dues and emphasis on overprinted OHMS and G Officials. Noted better such as O10 LR Plate 1 (VF NH), O27 LR (VF), C4 with reversed "1" in the left margin. High catalogue value, F-VF or better *(Not Illustrated)* **Est. 750.00**
- 1387 ★ King George VI Era Mint Plate Blocks** Selection on clear stockpages which includes one of each (corner position varies) with 1937 1c-8c Mufti, 1938 Pictorial set, 1942-1943 War Issue mint set (the One dollar; two stamps with stains) and 1946 Peace set, mainly VF with two stamps NH in each plate block *(Not Illustrated)* **Est. 750.00**
- 1388 ★ Selection of Mint NH Blocks of Four** Group of 27 different mint blocks of four including better shades in the Admiral issues; noted #69, 97, 104ix, 104b, 106 (early printing), 107a, 107e, 107iv, 117ii, 135, 141-145, 155, 156, etc. Centering is generally Fine or better, all stamps are never hinged. *(Not Illustrated)* **Est. 500.00+**
- 1389 ★ Mint Blocks and Plate Blocks** A few Victoria era blocks of four, including 2c Jubilee NH upper right corner block of four, etc. Then jumps to 1932 KGV Medallion era and well covered from 1946 Peace issue up to early QEII, with several dozen different mint plate blocks (many are NH and in matched sets). Noted 1946 Peace issues, with better \$1 Ferry matched set Plate 1 (lower right block is LH; others NH), etc. Also noted 20c Harvesting (#157) used plate A1 block of six, unusual. High catalogue value and worth a look *(Not Illustrated)* **Est. 500.00+**



- 1390 ★ Clean Mint / NH Selection** Total of 43 different mint stamps, majority is never hinged, including better such as #68, 72, 75, 78, 79, 100, 103, 157, 158, etc. F-VF or better centering **Est. 500.00+**



- 1391 ★ Clean Mint Better Issues** Selection of 81 different stamps (some in coil pairs) ranging from 1897 to 1951. Noted a nice #54 (VF), 55 (VF LH), 101 (XF LH), 102, 103, 104-122, 149-159, 174-177 (\$1 is NH), 178-183 in pairs, 228-230 in pairs, 245i, etc. Mainly F-VF throughout **Est. 500.00+**



- 1392 ★ Mainly Mint NH Admiral Issues** Selection of sixteen different mint never hinged Admiral issues, includes 104b, 105f, 106, 109, 110d, 114, 118, 130, 132, 139-140, etc., plus some mint NH coil pairs with 131 strip of four and pair, 131i, 132 strip of four and pair, 134 pair 134i, 134i strip of four, etc. Quality is nice and centering generally F-VF or better **Est. 400.00+**
- 1393 ★ Mainly King George V Mint Plate Blocks** Group of 54 plate multiples, mainly from 1928 to 1935 period, condition is variable on some plate blocks, but noted many useful items and with high catalogue value. Worth a look. **Est. 350.00**
- 1394 ☉ Large Queen Collection** Total of 140 stamps, all used from Half cent to Fifteen cent displayed on Lindner album and blank pages and on computer-printed pages; includes a wealth of cancellations and postmarks, printings and shades. Condition ranges from mixed to Fine or better. Closer inspection is recommended. *(Not Illustrated)* **Est. 1,500.00+**
- 1395 ☉ Comprehensive 1852-1979 Used Collection** Housed in a "Durable" Stamp Album, starting with a few Pence Issues, and virtually COMPLETE USED from Cents issues to 1979, with Back-of-Book. Includes better items such as #4d (VF), 4iv, 5, 12, Cents (set of 6), complete Large Queen and Small Queen (basic sets), 1897 Jubilee complete set of 16 (\$2 to \$5 have smudge cancels), complete from "Leaf" to KGV "Admiral" issue, latter with most coil issues represented in pairs, complete from 1927 to 1979 and virtually complete coil issues in pairs. Also includes complete Airmails, Special Delivery, Registration, Postage Dues (up to 1965) and most overprinted Officials. Noted a few dozen used stamps of Newfoundland & Provinces on Jarrett album pages at the end. A few flaws on pre-1900 issues, but overall condition is mainly Fine or better, with a good portion of stamps with CDS postmarks. Ideal lot to start a Canada used collection. *(Not Illustrated)* **Est. 1,500.00+**
- 1396 ☉ Extensive Used Small Queen Collection** Many hundreds, all displayed on Lindner hingeless pages in a deluxe multi-ring album, 1c, 2c and 3c are quite extensive; also nice run of 5c, 6c and 8c, plus valuable range of the 10c (35 examples; Montreal and Ottawa printings), and Widow Weeds 20c (11) and 50c (12), etc. Also includes five covers. Condition overall is mainly Fine or better. Inspect for potential better findings. *(Not Illustrated)* **Est. 1,000.00+**
- 1397 ☉ Used Dealer Stock** White box filled with selection cards, organized by Scott number from Queen Victoria to modern era, plus Back-of-Book, with many hundred used stamps, duplication in place, and also small stack of faulty material at the end; not catalogued. Noted many selected used stamps throughout for cancels and better centering. Ideal for show or internet dealer. Owner's catalogue value over \$7,000. *(Not Illustrated)* **Est. 750.00+**



- 1398 ☉ Selection of Used Pence Issues** Nine stamps which includes #1 (two examples), #2, #4 (three shades; one in sound condition with four margins), #5 (light crease; otherwise nice appearance), #7 and #8 (Hamilton 1858 datestamp). Mixed condition. Inspect. **Est. 750.00+**



- 1399 ☉ Used 1897-1929 Collection** Selection of several dozen different from Jubilee Issue to 1929 King George V "Scroll"; noted #50-60 (most with datestamps), 66-84, 89-94, 96-103, 123-124, 123 pair, 125-134, 131iv, 133 pair, 158, 162 pair, MR6ii pair, six Admiral booklet panes. Also Nova Scotia 3p dark blue (cut into design on side) tied by grid on small envelope mailed from Bridgetown to Indiantown, etc. A few flaws noted, but includes many CDS postmarked stamps, needs checking, Fine to Very Fine **Est. 750.00+**

- 1400 ☉ Extensive Used King George V "Admiral" Collection** Many hundreds displayed on Lindner hingeless pages in a deluxe multi-ring album; collected for postmarks and cancels, printings, multiples, coils and various shades. Noted many nice and selected stamps throughout and ideal basis for further study. Mainly Fine or better throughout *(Not Illustrated)* **Est. 750.00**



- 1401 ☉ Admiral Issue 5-Hole OHMS** Small selection of used 5-hole OHMS on Admiral issues, which includes #104 (two positions), 105, 107, 108 (3; two positions), 109 (3; two positions), 110, 111 (two positions; one has indigo shade), 112 (three positions), 113, 114 (2), 115 (2), 117 (three positions), 118 (3; two positions), 119 (two positions), 120 and 122. Mostly in sound condition, better than normally seen. Catalogue as Fine \$1,445. **Est. 600.00**

- 1402 ☉ Used Back-of-Book Collection** Many dozen different, all mounted on Minkus pages with complete used Airmails, Special Delivery, most Postage Dues, Registration 2c and & 5c with shades (also unused 8c; faults); and better 4-hole OHMS used with O226, O241-O245, O247, plus O1-O10, O25, etc. Many selected VF CDS stamps throughout, but generally Fine or better *(Not Illustrated)* **Est. 500.00**



- 1403 ☉ Specialized Used Admiral Issue Lot** Many dozen stamps collected for various letter and number duplex (hard to assemble) mainly with selected strikes. Also three collections with several hundred stamps mounted or in mounts on pages in three binders. Organized by issue, plate and shades, noted several booklet singles with scarcer squat printing, a nice selection of different perfins on the 1c green; some clean covers including single franking 8c to Switzerland. Concentrated on issued from 1c to 8c; overall quality is mainly Fine or better. A great lot for the advanced Admiral collector or for further study. **Est. 300.00+**



- 1404** ☉ **Used Cents Issues** Scott #14/20, includes 1c (17), 2c (4), 5c (21), 12½c (8), 17c (3). Mixed condition to Fine
(Not Illustrated) **Est. 250.00+**
- 1405** ☒ **Balance of Estate** Accumulations and collections of covers, loose and in stockbooks, with wealth of FDC many are better and seldom seen from 1930s to 1950s, includes covers from Newfoundland, noted a couple Moose Jaw crash covers, complete sets on registered covers and miscellaneous. Inspect for better findings.
(Not Illustrated) **Est. 500.00+**

LITERATURE

- 1406** L The Postal History of Nova Scotia and New Brunswick 1754-1867, by Jephcott, Greene and Young, published by Sissons, 1964, numbered '64' of limited edition of 400 copies, light front cover bend at lower right otherwise covers and content are clean. An essential reference work on the subject.
(Not Illustrated) **Est. 200.00+**
- 1407** L The Postage Stamps of New Brunswick and Nova Scotia by Nicholas Argenti, published by the Royal Philatelic Society, London, 1962, numbered "205" of limited edition of 350 copies, 223 pages, hardbound with gold embossing on spine and front cover, in very nice state of preservation and a must-have for the BNA philatelist.
(Not Illustrated) **Est. 200.00**
- 1408** L Newfoundland Air Mails 1919-1939 by Dalwick and Harmer, published by H. R. Harmer, first edition 1953, 180 pages with map of Newfoundland, hardcover, light discoloration on spine as usually seen on this book, otherwise content and covers are clean. An essential reference book on this popular subject.
(Not Illustrated) **Est. 75.00**
- 1409** L Paquebot and Ship Letter Cancellations of the World 1894-1951 by M.A. Studd, published by Robson Lowe, 1953, 85 pages, hardcover, light ageing, but still a useful reference handbook listing rarity factors for all reported strikes.
(Not Illustrated) **Est. 50.00**

**END OF AUCTION
THANK YOU**

THE PLACING OF A BID SHALL CONSTITUTE ACCEPTANCE OF THE CONDITIONS OF SALE

BIDDING

1. All bids are per lot, as numbered in the catalogue. Eastern Auctions Ltd. reserves the right to withdraw any lot prior to sale, to divide a lot or to group two or more.
2. The highest bidder shall prevail at one advance over the next highest bid. Should a dispute arise between bidders, the decision of the auctioneer as to the successful bidder or the re-offering or resale of the lot in dispute shall rest entirely in the judgment of the auctioneer. **On all lots sold a commission of 15% on the hammer price will be payable by the buyer.** The auctioneer shall regulate the bidding and reserves the right to refuse any bid believed by him not to be made in good faith.

PAYMENT FOR PURCHASES

3. **U.S. funds are acceptable only at the equivalent amount shown on the invoice.** Visa and MasterCard are accepted at no extra charge if you include the information on your bid sheet.
4. Payment for lots, including those on which opinions are desired under Condition of Sale 8, shall be made as follows:

A successful mail bidder will be notified of lots purchased and must remit before the lots are sent. A person known to us, or who furnishes satisfactory references, may at our option have purchases forwarded for immediate payment. Delivery will be to the address on the bid sheet. Proof by receipt of sending at the advised address shall constitute delivery. Postage and insurance are payable by the buyer.
5. Title shall not pass to the buyer until Eastern Auctions Ltd has received full payment.
6. Buyers agree to pay for lots as specified above and no credit is extended, a late payment charge of 2% per month is added to overdue payments, minimum \$5.00.

QUALITY AND AUTHENTICITY

7. Each lot is sold as genuine and correctly described based on individual description as modified by any specific notations in this catalogue including (but not restricted to) "Key to Cataloguing".
 - (a) **QUALITY.** Any lot, description of which is incorrect, is returnable within forty-five days from closing date of auction. If the opinion of a mutually acceptable authority is desired, this period will be extended as noted in Condition 8. All disputed lots must be returned intact in the condition received. Photographed lots are not returnable on account of centering or perforations. Lots containing more than twenty stamps, described "as is", or described as having faults are not returnable for any reason. Bidders who have had an opportunity to examine the lots prior to the sale may not return the lots.
 - (b) **AUTHENTICITY.** Any lot, which is declared other than genuine by a mutually acceptable authority is returnable, provided the lot is received within a period of four weeks from the date of the auction. Proof that a "mutually acceptable authority" declines to express an opinion is not normally grounds for the return of a lot.
 - (c) Returns must be made by registered mail.
 - (d) Lots marked or encapsulated by an expert committee are not returnable for any reason.
 - (e) Lots accompanied by an existing certificate are not returnable.

EXTENSION OF TIME

8. When an opinion from an acceptable authority is necessary, the buyer shall:
 - (f) Submit the lot without delay to either; (1) the Vincent Graves Greene Foundation or Sergio Sismondo for Canada and British North America; (2) Sergio Sismondo, British Philatelic Association or the Royal Philatelic Society of London for British Commonwealth and (3) Sergio Sismondo for Foreign;
 - (g) Ensure that advice in writing to this effect be received before the auction.
 - (h) Remit in full for the lot. The buyer shall be reimbursed in full for any lot declared other than genuine.

EXPENSES OF CERTIFICATION

9. Expenses shall be borne by the buyer except where the lot is other than as described and is returned within the conditions set forth above. Our responsibility is expressly limited to:
- (a) The actual cost of the opinion if up to \$30.00 or less, or
 - (b) The cost of the opinion up to 5% of the sale price but not exceeding a maximum of \$100.00.
 - (c) We are not responsible for expenses on the return of any lot.

SALES TAXES

10. The Harmonized Sales Tax is payable by mail bidders residing in New Brunswick, Nova Scotia and Newfoundland liable to the tax. Other Canadian residents are liable for the GST. Foreign residents are liable for GST only on the buyer's premium.
11. This firm is a subscriber to the ASDA Code of Ethics for Auction firms.

KEY TO CATALOGUING

SYMBOLS & MAJOR ABBREVIATIONS

★	Mint	⊙	Used	E	Essay
☒	Cover	(/)	Incomplete Set	F	Forgery
(-)	Complete Set	R	Reprint	P	Proof
◆	Graded Stamp	CDS	Circular Date Stamp	L	Literature

CONDITION

The various grading of stamps are in order; **Extremely Fine; Very Fine; Fine and Very Good.** In the case of sets, large blocks, sheets, etc., the condition quoted represents the average and quality above and below this standard can be expected.

Mixed condition: in large lots, a range of condition can be expected, from small faults to Very Fine.

GUM

NH	Never Hinged – with original gum in Post Office state and unmounted.
LH	Lightly Hinged – with full original gum showing some evidence of a previous hinge.
OG	Original gum – showing some evidence of a previous hinge, a portion of which may still be present.
Part OG	Part original gum.
Unused	Unused without original gum (unless gum is mentioned), or regummed.
Ungummed	Without gum as issued.

ESTIMATED VALUES

If an estimated cash value is given, it is shown in the description and always indicated by the abbreviation “Est.”. It is used where the lot is large or where the actual value has little relation to the catalogue price. **It represents the auctioneer's appraisal of the true CASH value of a lot and the figure is invariably close to the actual realization.** It is useless for mail bidders to list any bids that are only a low proportion of such estimates.

CATALOGUES AND HANDBOOKS USED IN LISTING

- Unitrade Specialized (2009 Edition)
- Scott 2009 Standard Postage Stamp Catalogue Volume 1 – 6
- Winthrop S. Boggs, The Postage Stamps and Postal History of Canada, Quarterman Publications, 1974
- Robson Lowe, The Encyclopaedia of British Empire Postage Stamps Volume V North America part I to IV, 1973
- Frank W. Campbell, Canada Post Offices 1755/1895, Quarterman Publication, 1972
- Minuse and Pratt, The Essays and Proofs of British North America, 1970
- Dalwick and Harmer, Newfoundland Air Mails 1919-1939, American Air Mail Society, 1st Edition, 1953
- The Standard Canada Precancel Catalogue, 5th Edition, 2004
- Walsh Newfoundland Specialized Stamp Catalogue 6th Edition, 2006
- C.A. Longworth-Dames, The Semi-Official Air Stamps of Canada 1924-1934, 1982 edition.

BIDDING INCREMENTS

The auctioneer may regulate the bidding at his discretion. However, to assist absentee bidders in establishing their maximum bid for each lot, the increments shown below will be used in most cases. We recommend that written bids conform to these increments (those which do not will be reduced to the previous level).

BIDDING IS CONDUCTED IN THE FOLLOWING INCREMENTS:

\$10 - \$50.....	\$2.00	\$325 - \$750.....	\$25.00	\$3,250 - \$7,500.....	\$250.00
\$55 - \$130.....	\$5.00	\$800 - \$1,500.....	\$50.00	\$8,000 - \$20,000.....	\$500.00
\$140 - \$300.....	\$10.00	\$1,600 - \$3,000.....	\$100.00	\$21,000 - OVER.....	\$1,000.00

TELEPHONE BIDS

Bids may be placed during office hours Monday to Friday from 8:00 AM to 5:00 PM Atlantic Standard Time by dialing 1 (506) 548-8986 or toll free in North America 1 (800) 667-8267. Bids may also be placed during the viewing sessions only, by calling the hotel directly at 1 (902) 423-6331 and asking for (Victoria Suite).

Please note all telephone bids must be confirmed by mail, e-mail or fax.

FAXING OR E-MAILING YOUR BIDS

You can fax or e-mail your bids before 11:00 AM A.S.T. on the closing day of the auction.

Fax: 1 (506) 546-6627, or toll free in North America 1 (888) 867-8267.

E-mail address: easternauctions@nb.aibn.com

BIDDING BY MAIL

If you wish to mail your bid sheet please allow at least two weeks for delivery. We often receive mail bids after the auction closing. These bids are unfortunately nullified. Bidders are urged to phone in their bids and then mail in their confirmation.

WEB SITE

You can view this auction on our Web Site at www.easternauctions.com. For your convenience, we have pictured almost every lot to facilitate your bidding. This will nicely compliment the catalogue due to constraints presented by a printed format.

AUCTION AGENTS

We are pleased to recommend the following agents:

- Mr. Claude Michaud** P.O. BOX 31248 • Halifax • Nova Scotia • B3K 5Y1 • Canada
Phone or Fax 1 (902) 443-5912
E-mail: jcm.ph@ns.sympatico.ca
- Mr. Gerald Tucker** 23 Alderney Dr. • Dartmouth • Nova Scotia • B2Y 2N2 • Canada
Tel: 1 (902) 423-8254 • Fax: 1 (902) 461-0744
Toll Free Tel: 1 (800) 377-8267
E-mail: seaside@seasidebs.com
- Mr. Harold B. Gordon** 614-6505 CSL Road • Montréal • Québec • H4V 1G3 • Canada
Phone or Fax: 1 (514) 488-0445
E-mail: hbgordon@videotron.ca
- Purser Associates** 84 Webcower Road #2 • Arlington • MA • 02474-2323 • USA
Tel: 1 (857) 928-5140 • Fax: 1 (781) 777-1023
E-mail: info@pursers.com Web Site: www.pursers.com
Visa, MasterCard & American Express welcomed.
- Mr. Charles Cwiakala** 1527 S. Fairview Avenue • Park Ridge • IL • 60068 • USA
Phone or Fax: 1 (847) 823-8747
E-mail: cecwiakala@aol.com
- Mr. Frank Mandel** P.O. Box 157 • New York • NY • 10014-0157 • USA
Tel: 1 (212) 675-0819 - Fax: 1 (212) 366-6462
- Jean & Tony Lancaster** 20 Milner Road • Kingston • Surrey • KT1 2AU • UK
Tel: (44) 020 8547 1220 • Fax: (44) 020 8547 3739
E-mail: jlaa@blueyonder.co.uk
Web Site: www.philafinder.com
- Mary Weeks** 8 Old House Close • Ewell • Epsom • Surrey • KT17 1LE • UK
Tel: (44) 020 8393 8217 • Fax: (44) 020 8393 1332
E-mail: mary@maryweeks.demon.co.uk

Online Shopping

www.garylyon.com



New items added to our store on a regular basis.
Visit us online to open your account.



Gary J. Lyon (Philatelist) Ltd.

P.O. Box 450 - Bathurst - New Brunswick - E2A 3Z4 - Canada

Tel (800) 667-8267 - Fax (888) 867-8267 - Email glstamps@nbnet.nb.ca

