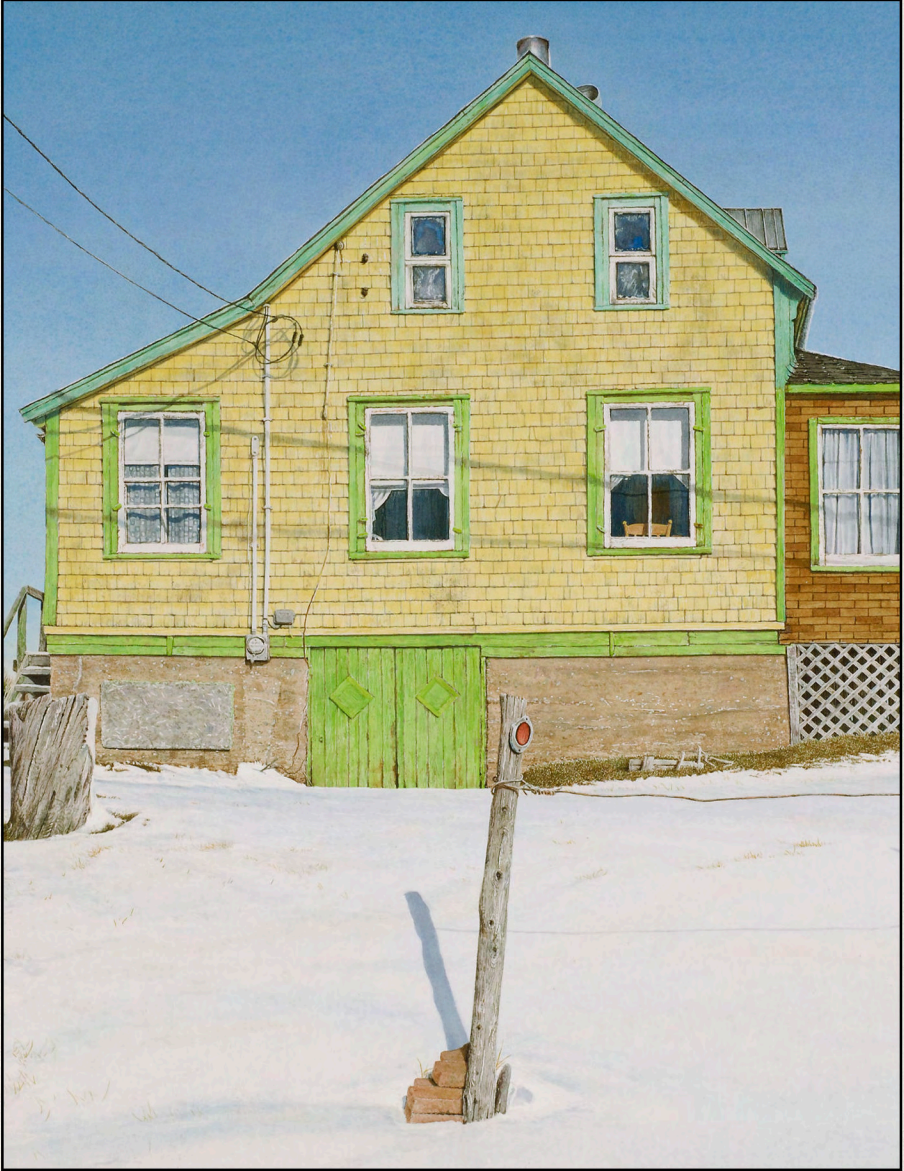


**Public  
Auction**

# **Eastern Auctions Ltd.**



**Gary J. Lyon**  
**Licensed & Bonded Auctioneer**

**March  
1<sup>st</sup>, 2008**





# "End of the Road"

2006, watercolour, 24 ¼ X 29 ⅝

By John Wiseman

**La Maisonart**  
**John Wiseman Gallery & Studio**

Open Daily 9:00am to 8:00pm  
from May to November  
from December to April by Appointment Only

826 Highway 132, Anse à Beaufils  
Percé, Québec, G0C 2L0 Canada  
Tel/Fax: 1 (418) 782-2047

E-mail: [maisonart@globetrotter.net](mailto:maisonart@globetrotter.net)  
website: [www.johnwiseman.net](http://www.johnwiseman.net)

Copyright © - All Rights Reserved





# Eastern Auctions Ltd.

P.O. Box 250, Bathurst, New Brunswick, E2A 3Z2, Canada

Tel: 1 (506) 548-8986 • Fax: 1 (506) 546-6627

Toll Free Tel: 1 (800) 667-8267 • Fax: 1 (888) 867-8267

E-Mail: [easternauctions@nb.aibn.com](mailto:easternauctions@nb.aibn.com)

Web Site: [www.easternauctions.com](http://www.easternauctions.com)

## PUBLIC AUCTION BID SHEET

*Sale Date: March 1<sup>st</sup>, 2008*

*Please buy the following lots for me at prices not exceeding those shown. I have read the conditions of sale at the beginning of the catalogue and understand the 15% buyer's premium.*

Signature: \_\_\_\_\_

Customer #: \_\_\_\_\_

Name: \_\_\_\_\_

Address: \_\_\_\_\_ City: \_\_\_\_\_

Province/State: \_\_\_\_\_ Postal/Zip Code: \_\_\_\_\_

Country: \_\_\_\_\_

Telephone: \_\_\_\_\_ Fax: \_\_\_\_\_

E-Mail: \_\_\_\_\_

### Credit Card Payment

☐ Please charge my purchases to my credit card.



Card #: \_\_\_\_\_ Exp Date: \_\_\_\_\_

Cardholder's Name (as it appears on card): \_\_\_\_\_

Billing Address if different from address printed above:

\_\_\_\_\_

\_\_\_\_\_

\_\_\_\_\_

Signature: \_\_\_\_\_

References (First time bidders only): \_\_\_\_\_

\_\_\_\_\_

☐ Please tick this box if you are bidding in US Dollars:

*If necessary to secure a lot, you may raise my bids by:*

10% ☐ 20% ☐

☐ YES! I wish to subscribe to a full year of Catalogues and Prices Realized Reports for both Mail & Public Auctions.

Please find my ☐cheque ☐credit card number enclosed for my one-year subscription fee of CDN \$35.00 for Canadian residents, USD \$35.00 for United States residents and USD \$50.00 for overseas residents.



Bidding is conducted in the following increments:  
*(Uneven bids will be rounded downwards)*

<i>\$10 - \$50.....</i>	<i><b>\$2.00</b></i>	<i>\$325 - \$750.....</i>	<i><b>\$25.00</b></i>	<i>\$3,250 - \$7,500.....</i>	<i><b>\$250.00</b></i>
<i>\$55 - \$130.....</i>	<i><b>\$5.00</b></i>	<i>\$800 - \$1,500.....</i>	<i><b>\$50.00</b></i>	<i>\$8,000 - \$20,000.....</i>	<i><b>\$500.00</b></i>
<i>\$140 - \$300.....</i>	<i><b>\$10.00</b></i>	<i>\$1,600 - \$3,000.....</i>	<i><b>\$100.00</b></i>	<i>\$21,000 - OVER.....</i>	<i><b>\$1,000.00</b></i>

*We are not responsible for bidder errors.*

*Please check bids and print clearly. All bids in even dollars please.*

[illegible]

*Bid early to avoid disappointment*

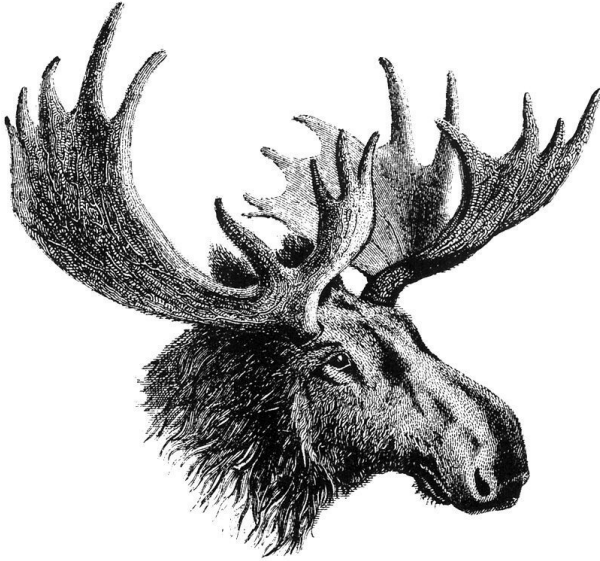
*View this sale on our Web Site: [www.easternauctions.com](http://www.easternauctions.com)*

*Please bid early to avoid disappointment. You may mail, fax, e-mail or phone in your bids. Phone bids must be confirmed in writing. Mailing your bids less than two weeks prior to the sale is not recommended.*



# **Eastern Auctions Ltd.**

## **PUBLIC AUCTION**



**March 1<sup>st</sup>, 2008**  
**Halifax, Nova Scotia**

### **Eastern Auctions Ltd.**

P.O. Box 250, Bathurst, New Brunswick, E2A 3Z2, Canada

Tel: 1 (506) 548-8986 • Fax: 1 (506) 546-6627

**E-mail:** [easternauctions@nb.aibn.com](mailto:easternauctions@nb.aibn.com)

**Web Site:** [www.easternauctions.com](http://www.easternauctions.com)

**Copyright © 2008 – All Rights Reserved**



## **AUCTION INFORMATION**

---

For assistance and further information  
please contact:

**SPECIALISTS IN STAMPS:**

Gary Lyon  
Yohann Tanguay

**WEB SITE:**

Luc Doucet

**CONSIGNOR SETTLEMENTS/  
ACCOUNTS RECEIVABLE:**

Pamela Ross

**MAILING LISTS AND  
SUBSCRIPTIONS:**

Billie-Jo Beaton

**CATALOGUE EDITORS:**

Luc Doucet  
Yohann Tanguay  
Sharon Willett

**SHIPPING:**

Catherine Gallagher

---

## **VENUE**

**The Lord Nelson Hotel & Suites**

**Britannia Room (3<sup>rd</sup> Floor)**

1515 South Park Street

Halifax, Nova Scotia

B3J 2L2 Canada

Tel: 1 (902) 423-6331 • Fax: 1 (902) 491-6148

Toll Free Tel: 1 (800) 565-2020

*For Room Reservations Only*

## **Viewing Sessions**

**Thursday February 28<sup>th</sup>, 2008** – 10:00am to 7:00pm

**Friday February 29<sup>th</sup>, 2008** – 10:00am to 5:00pm

**Saturday March 1<sup>st</sup>, 2008** – 9:00am to 12:00pm

## **Auction Sessions**

**Saturday March 1<sup>st</sup>, 2008** – 1:30pm (Lot 1001 – Lot 1537 “General Sale”)



# THE PLACING OF A BID SHALL CONSTITUTE ACCEPTANCE OF THE CONDITIONS OF SALE

## BIDDING

1. All bids are per lot, as numbered in the catalogue. Eastern Auctions Ltd. reserves the right to withdraw any lot prior to sale, to divide a lot or to group two or more.
2. The highest bidder shall prevail at one advance over the next highest bid. Should a dispute arise between bidders, the decision of the auctioneer as to the successful bidder or the re-offering or resale of the lot in dispute shall rest entirely in the judgment of the auctioneer. **On all lots sold a commission of 15% on the hammer price will be payable by the buyer.** The auctioneer shall regulate the bidding and reserves the right to refuse any bid believed by him not to be made in good faith.

## PAYMENT FOR PURCHASES

3. **U.S. funds are acceptable only at the equivalent amount shown on the invoice.** Visa and MasterCard are accepted at no extra charge if you include the information on your bid sheet.
4. Payment for lots, including those on which opinions are desired under Condition of Sale 8, shall be made as follows:

A successful mail bidder will be notified of lots purchased and must remit before the lots are sent. A person known to us, or who furnishes satisfactory references, may at our option have purchases forwarded for immediate payment. Delivery will be to the address on the bid sheet. Proof by receipt of sending at the advised address shall constitute delivery. Postage and insurance are payable by the buyer.
5. Title shall not pass to the buyer until Eastern Auctions Ltd has received full payment.
6. Buyers agree to pay for lots as specified above and no credit is extended, a late payment charge of 2% per month is added to overdue payments, minimum \$5.00.

## QUALITY AND AUTHENTICITY

7. Each lot is sold as genuine and correctly described based on individual description as modified by any specific notations in this catalogue including (but not restricted to) “Key to Cataloguing”.
  - (a) **QUALITY.** Any lot, description of which is incorrect, is returnable within forty-five days from closing date of auction. If the opinion of a mutually acceptable authority is desired, this period will be extended as noted in Condition 8. All disputed lots must be returned intact in the condition received. Photographed lots are not returnable on account of centering or perforations. Lots containing more than twenty stamps, described “as is”, or described as having faults are not returnable for any reason. Bidders who have had an opportunity to examine the lots prior to the sale may not return the lots.
  - (b) **AUTHENTICITY.** Any lot, which is declared other than genuine by a mutually acceptable authority is returnable, provided the lot is received within a period of four weeks from the date of the auction. Proof that a “mutually acceptable authority” declines to express an opinion is not normally grounds for the return of a lot.
  - (c) Returns must be made by registered mail.
  - (d) Lots marked or encapsulated by an expert committee are not returnable for any reason.
  - (e) Lots accompanied by an existing certificate are not returnable.

## EXTENSION OF TIME

8. When an opinion from a mutually acceptable authority is necessary, the buyer shall:
  - (f) Submit the lot without delay to a mutually accepted authority;
  - (g) Ensure that advice in writing to this effect be received before the auction.
  - (h) Remit in full for the lot. The buyer shall be reimbursed in full for any lot declared other than genuine.

EXPENSES OF CERTIFICATION

9. Expenses shall be borne by the buyer except where the lot is other than as described and is returned within the conditions set forth above. Our responsibility is expressly limited to:
- (a) The actual cost of the opinion if up to \$30.00 or less, or
  - (b) The cost of the opinion up to 5% of the sale price but not exceeding a maximum of \$100.00.
  - (c) We are not responsible for expenses on the return of any lot.

SALES TAXES

10. The Harmonized Sales Tax is payable by mail bidders residing in New Brunswick, Nova Scotia and Newfoundland liable to the tax. Other Canadian residents are liable for the GST. Foreign residents are liable for GST only on the buyer’s premium.
11. This firm is a subscriber to the ASDA Code of Ethics for Auction firms.

KEY TO CATALOGUING

SYMBOLS & MAJOR ABBREVIATIONS

★	Mint	⊙	Used	E	Essay
✉	Cover	PB	Plate Block / Multiple	B	Block of four or larger
BP	Booklet Pane	BK	Booklet	S	Sheet
(-)	Complete Set	(/)	Incomplete Set	F	Forgery
📖	Literature	P	Proof	FDC	First Day Cover
♦	Graded Stamp	CDS	Circular Date Stamp		

CONDITION

The various grading of stamps are in order; **Extremely Fine; Very Fine; Fine and Very Good.** In the case of sets, large blocks, sheets, etc., the condition quoted represents the average and quality above and below this standard can be expected.

**Mixed condition:** in large lots, a range of condition can be expected, from small faults to Very Fine.

GUM

NH	Never Hinged – with original gum in Post Office state and unmounted.
LH	Lightly Hinged – with full original gum showing some evidence of a previous hinge.
OG	Original gum – showing some evidence of a previous hinge, a portion of which may still be present.
Unused	Unused without original gum (unless gum is mentioned), or regummed.
Ungummed	Without gum as issued.

ESTIMATED VALUES

If an estimated cash value is given, it is shown in the description and always indicated by the abbreviation “Est.”. It is used where the lot is large or where the actual value has little relation to the catalogue price. **It represents the auctioneer’s appraisal of the true CASH value of a lot and the figure is invariably close to the actual realization.** It is useless for mail bidders to list any bids that are only a low proportion of such estimates.



## CATALOGUES AND HANDBOOKS USED IN LISTING

- Unitrade Specialized (2008 Edition)
- Scott 2008 Standard Stamp Catalogue Volume 1 to 6
- Scott 2008 Classic Specialized Catalogue of Stamps & Covers 1840 – 1940
- Stanley Gibbons 2008 Edition Stamp Catalogue Commonwealth & British Empire Stamps 1840 – 1952
- Winthrop S. Boggs, The Postage Stamps and Postal History of Canada, Quarterman Publications, 1974
- Robson Lowe, The Encyclopaedia of British Empire Postage Stamps Volume V North America part I to IV, 1973
- Frank W. Campbell, Canada Post Offices 1755/1895, Quarterman Publication, 1972
- Ralph E. Trimble, RE-ENTRIES.COM (internet website)
- Minuse and Pratt, The Essays and Proofs of British North America, Sissons Publications, 1970
- Dalwick and Harmer, Newfoundland Air Mails 1919-1939, American Air Mail Society, Revised edition 1984
- The Canadian Revenue Stamp Catalogue, Van Dam, 2000
- The Standard Canada Precancel Catalogue, 5<sup>th</sup> Edition, 2004

## BIDDING INCREMENTS

The auctioneer may regulate the bidding at his discretion. However, to assist absentee bidders in establishing their maximum bid for each lot, the increments shown below will be used in most cases. We recommend that written bids conform to these increments (those which do not will be reduced to the previous level).

### BIDDING IS CONDUCTED IN THE FOLLOWING INCREMENTS:

<i>\$10 - \$50.....</i>	<i><b>\$2.00</b></i>	<i>\$325 - \$750.....</i>	<i><b>\$25.00</b></i>	<i>\$3,250 - \$7,500.....</i>	<i><b>\$250.00</b></i>
<i>\$55 - \$130.....</i>	<i><b>\$5.00</b></i>	<i>\$800 - \$1,500.....</i>	<i><b>\$50.00</b></i>	<i>\$8,000 - \$20,000.....</i>	<i><b>\$500.00</b></i>
<i>\$140 - \$300.....</i>	<i><b>\$10.00</b></i>	<i>\$1,600 - \$3,000.....</i>	<i><b>\$100.00</b></i>	<i>\$21,000 - OVER.....</i>	<i><b>\$1,000.00</b></i>

## TELEPHONE BIDS

Bids may be placed during office hours Monday to Friday from 8:00 AM to 5:00 PM Atlantic Standard Time by dialing 1 (506) 548-8986 or toll free in North America 1 (800) 667-8267. Bids may also be placed during the viewing sessions only, by calling the hotel directly at 1 (902) 423-6331 and asking for (Britannia Room).

*Please note all telephone bids must be confirmed by mail, e-mail or fax.*

## FAXING OR E-MAILING YOUR BIDS

You can fax or e-mail your bids before 11:00 AM A.S.T. on the closing day of the auction.

Fax: 1 (506) 546-6627, or toll free in North America 1 (888) 867-8267.

E-mail address: [easternauctions@nb.aibn.com](mailto:easternauctions@nb.aibn.com)

## BIDDING BY MAIL

If you wish to mail your bid sheet please allow at least two weeks for delivery. We often receive mail bids after the auction closing. These bids are unfortunately nullified. Bidders are urged to phone in their bids and then mail in their confirmation.

## WEB SITE

You can view this auction on our Web Site at [www.easternauctions.com](http://www.easternauctions.com). For your convenience, we have pictured almost every lot to facilitate your bidding. This will nicely compliment the catalogue due to constraints presented by a printed format.

## AUCTION AGENTS

*We are pleased to recommend the following agents:*

- Mr. Gerald Tucker** 23 Alderney Dr. • Dartmouth • Nova Scotia • B2Y 2N2 • Canada  
Tel: 1 (902) 423-8254 • Fax: 1 (902) 461-0744  
Toll Free Tel: 1 (800) 377-8267  
E-mail: [seaside@seasidebs.com](mailto:seaside@seasidebs.com)
- Mr. Harold B. Gordon** 614-6505 CSL Road • Montréal • Québec • H4V 1G3 • Canada  
Phone or Fax: 1 (514) 488-0445  
E-mail: [hbgordon@videotron.ca](mailto:hbgordon@videotron.ca)
- Jonathan Orenstein & Andrew Kupersmit** 84 Webcower Road #2 • Arlington • MA • 02474-2323 • USA  
Tel: 1 (857) 928-5140 • Fax: 1 (781) 777-1023  
E-mail: [info@pursers.com](mailto:info@pursers.com) Web Site: [www.pursers.com](http://www.pursers.com)  
Visa, MasterCard & American Express welcomed.
- Mr. Charles Cwiakala** 1527 S. Fairview Avenue • Park Ridge • IL • 60068 • USA  
Phone or Fax: 1 (847) 823-8747  
E-mail: [cecwiakala@aol.com](mailto:cecwiakala@aol.com)
- Mr. Frank Mandel** P.O. Box 157 • New York • NY • 10014-0157 • USA  
Tel: 1 (212) 675-0819 - Fax: 1 (212) 366-6462
- Jean & Tony Lancaster** 20 Milner Road • Kingston • Surrey • KT1 2AU • UK  
Tel: (44) 020 8547 1220 • Fax: (44) 020 8547 3739  
E-mail: [jlaa@blueyonder.co.uk](mailto:jlaa@blueyonder.co.uk)  
Web Site: [www.philafinder.com](http://www.philafinder.com)
- Mary Weeks** 8 Old House Close • Ewell • Epsom • Surrey • KT17 1LE • UK  
Tel: (44) 020 8393 8217 • Fax: (44) 020 8393 1332  
E-mail: [mary@maryweeks.demon.co.uk](mailto:mary@maryweeks.demon.co.uk)

**AUCTION SESSION***Saturday, March 1<sup>st</sup>, 2008 – 1:30pm (Atlantic Time)**Lots 1001 – 1537*

- 1001 ★S USA #367, 1909 2c Carmine Lincoln, Double-Line Watermark, Perf 12** Complete mint sheet (Upper Right Pane) of 100, showing plate imprint and number at top and at right, perf separations in places mostly concentrated at foot, reasonably centered to well centered throughout, fresh and with full original gum, never hinged, spot on gum on two stamps in the middle of the sheet, negligible for this scarce intact sheet, F-VF *(Illustrated on website)* **1,500.00**
- 1002 ★◎ USA Mint and Used Collection as Received** Many dozen different mounted on album pages and displayed on one stockpage, starting with early 1860s to 1930s, noted some used Banknote issues, well represented from Columbian to Washington - Franklin issues, with #229 unused no gum, used #291, mint #294-299, 400, Q1-Q12 set, JQ1-JQ5 (25c is NH), etc. Condition ranges from mixed to Very Fine throughout and worth a look. *(Not Illustrated)* **Est. 1,000.00+**

**X1003****X1005**

- 1003 ★ ASCENSION #1-9, 1922 ½p-3sh King George V Overprinted Issue** Centered and fresh mint lightly hinged set of nine, VF LH (SG 1-9 £300) **376.00**



- 1004 ◎ AUSTRALIA #J40a, 1909 1p Yellow Green & Rose on Thicker Paper watermark Large Crown & Double-lined A, Perf 11,** a rare and well centered used example with oval Perth registered cancellation, VF, 2006 APS cert. (SG D74 £1,000) **1,200.00**

- 1005 ★ CAYMAN ISLANDS #69-80, 1932 ¼p-10sh Centenary Issue** Fresh mint set of twelve, mainly VF LH (SG 84-95 £400) **558.65**

- 1006 ★◎ GERMANY AND STATES Collection as Received** Several dozen on stockpages, with emphasis on mint semi-postals includes some better valued sets, etc. (Owner's catalogue value by Scott 2007 US\$1,352). Also includes a few dozen German States on stockpages, mixed condition as usual seen, but noticed some nice stamps. Inspect. *(Not Illustrated)* **Est. 200.00+**


- 1007 ◎ GERMANY Neat Useful Used Selection** As received and displayed on cards and in one circuit book. Includes some German States mixed condition, but noted some nice selected used examples, nice used #76, B310-B313 (2 sets), B314-B315, B320-B323 (3 sets), B327-B330, B334-B337 (2 sets), etc. Also better 1951 airmail cover to USA franked with B314-B315 and B318-B319 sets, F-VF throughout *(Not Illustrated)* **Est. 400.00+**





## MAY 6, 1840 FIRST DAY COVER



- 1008**  **GREAT BRITAIN #U4, 1840 (MAY 6)** Two pence Mulready Letter Sheet, Stereo "a 92" used on FIRST DAY OF ISSUE from London to Holyhead, Anglesea, Wales, cancelled by centrally struck red Maltese Cross postmark on front, with clear and legible dispatch "B / MY - 6 / 1840" datestamp from London on reverse. Some wear, tiny tears and soiling around the edges and vertical file fold at centre, but letter sheet is essentially complete, missing nothing but the lacquer with which it was sealed. An extraordinary and important First Day Cover for the connoisseur, Fine to Very Fine (Stanley Gibbons Specialized Catalogue 2006 ME3 £65,000) **Est. 20,000.00+**

Expertization: 2007 Sismondo cert. and letter sheet signed by him in pencil

*Note: The census of Mulready envelopes and letter sheets used during the month of May, 1840, compiled and published by Mike Jackson, FRPSL, shows that EIGHT EXAMPLES of the Two Pence Mulready HAD BEEN RECORDED USED ON MAY 6TH, the first day of issue, prior to the certification of the present item. None of the now nine recorded items, which include six letter sheets and three envelopes, bear additional postage stamps.*

A VERY RARE AND SOUGHT-AFTER FIRST DAY COVER OF THE HIGHEST CALIBER.



- 1009 ★◎ GREAT BRITAIN Valuable Mint and Used Collection** Displayed on several black stockpages, starting with 1840 issues up to the early 1950s, includes few dozen line-engraved and surface-printed issues (mixed condition), plus noted several better high values such as mint 1883 2sh6p lilac, 1884 5sh & 10sh, 1902-1911 10sh ultra (all four with minor gum bends / wrinkles), mint 1919 Seahorse set of three (plus extra 5sh and 10sh, different shades), mint 1934 Seahorse set of three, etc. A useful lot worth inspection. **Est. 1,500.00+**



X1010



X1012

- 1010 ★ HONG KONG 1948 10c & \$10 Silver Wedding Issue** Fresh mint set of two, VF NH **377.50**
- 1011 ★◎ HONG KONG Mint and Used Collection** Many dozen different displayed on black stockpages, starting with over 50 different used Queen Victoria to King George V issues, followed by mint #147-150, 165, 168-173, 180-183 (blocks of four, each with bottom pair NH), 185/198 (only missing \$2), plus used #166A (two blocks of four), 178-179. Also some modern NH issues, etc. Fine to Very Fine throughout *(Not Illustrated)* **Est. 500.00+**
- 1012 ★ ST. HELENA #101-110, 1934 ½p-10sh Centenary Issue** Fresh and centered mint set of ten, VF LH (SG 114-123 £350) **431.50**
- 1013 ★◎ ST. PIERRE & MIQUELON Mainly Mint Collection** Many dozen different displayed on black stockpages, mainly from the 1930s to modern 1980s, noted mint NH issues, se-tenant multiples, three deluxe die proofs, France Libre, some imperfs, etc. Fine to Very Fine *(Not Illustrated)* **Est. 150.00**

Call us toll free in North America  
Dial 1(800) 667-8267  
or  
Fax us 1(888) 867-8267





- 1014 ★ BRITISH COMMONWEALTH 1948 Silver Wedding Omnibus** Collection of 58 different omnibus sets of two, fresh and includes key Hong Kong, Singapore, Gibraltar, etc., only a few are missing to complete this long and popular series, VF NH **1,972.00**



- 1015 ★ BRITISH COMMONWEALTH 1935 Silver Jubilee Omnibus** Collection of 38 different omnibus sets of four, all fresh and mint never hinged, includes key Hong Kong, Ascension, Gibraltar, etc., VF NH **1,136.00**



- 1016 ★ BRITISH COMMONWEALTH Clean Mint Collection / Accumulation** Housed in a red stockbook, filled with various mint sets, notably Ascension with 1938-1953 KGV set of 15, 1956 QEII set of 13; Falkland Islands with 1960 QEII set of 15; St. Lucia with 1936 KGV Pictorial set of 12 (9 COMPLETE SETS!); St. Helena with 1922-1927 Script CA mint set of 15, the 3p has the 'Broken Mainmast' variety, etc. Mainly F-VF or better throughout **Est. 600.00+**
- 1017 ★◎ WORLDWIDE Old-Time Collection as Received** Small Springback album with many dozen used stamps mounted on pages, notably from USA with a nice used 1898 50c Trans-Mississippi, Canada, Great Britain, Germany, Indian States, etc. Inspect. *(Not Illustrated)* **Est. 300.00+**
- 1018 ★ WORLDWIDE World Health Organization Topical Collection** Binder filled with many dozen issues, mostly mint throughout, celebrating the 25th Anniversary of the W.H.O. Includes Commonwealth Omnibus mint part set of 44, Worldwide countries commemorating the event and 38 different FDC from various Foreign countries, many elusive stamps throughout, F-VF *(Not Illustrated)* **Est. 200.00+**



# Provinces

Lots 1019 - 1065





## BRITISH COLUMBIA



- 1019 ★ #1, 1860 2½p Dull Rose, No Watermark, Imperforate** An exceptional unused example, with lovely bright fresh colour and full to large margins on all sides, ungummed as issued, VF, choice **20,000.00**

A VERY FINE TWO AND ONE HALF-PENCE ROSE, IMPERFORATE, UNUSED EXAMPLE IN SELECTED CONDITION, RARELY ENCOUNTERED AND MISSING FROM MOST ADVANCED COLLECTIONS. A KEY AND IMPORTANT STAMP.



- 1020 ★ #3, 1865 5c Rose Queen Victoria, Watermark Crown CC, Imperforate** An exceedingly rare unused example of this sought-after classic stamp, tiny tear at foot and small thin at top left do not detract, nice colour and fresh appearance, barely touching design at right to huge margins and showing portion of adjacent stamp at left, above average condition for this rare classic, Fine, 2007 Greene Foundation cert. **20,000.00**

Provenance: Dale-Lichtenstein

A FINE EXAMPLE OF THE UNUSED FIVE-CENT IMPERFORATE. AMONG THE RAREST STAMPS OF BRITISH NORTH AMERICA.



- 1021 ★ #4, 1865 10c Blue, Watermark Crown CC, Imperforate** A choice mint example of this scarce classic stamp, showing full to very large margins, minute edge thin, entirely in sheet margin at right and of no importance, lovely fresh colour and showing large part original gum, signed A. Diena and H. Bloch, VF OG **7,500.00**

A VERY FINE MINT ORIGINAL GUM EXAMPLE OF THE TEN-CENT BLUE IMPERFORATE. RARELY SEEN IN SUCH NICE QUALITY.





1022



1023



1024

- 1022 ★ #4, 1865 10c Blue, Watermark Crown CC, Imperforate A scarce mint example, slightest trace of soiling, mentioned only for strict accuracy, clear to full margins and possessing full original gum, Fine OG, 2007 Greene Foundation cert. **3,750.00**
- 1023 ★ #12, 1867-1871 50c on 3p Violet, Watermark Crown CC, Perf 14 Bright mint single, minor tone spot at lower left, intact perforations and full original gum, very lightly hinged, VG-F LH **1,875.00**
- 1024 ★ #14, 1869 5c on 3p Bright Red, watermark Crown CC, Perf 12½ An impressive mint example, with brilliant fresh colour and nice clear impression, full intact perforations and possessing full original gum, lightly hinged. A key and challenging mint stamp to obtain in such superior quality, signed A. Brun, Fine+ LH **5,000.00**



1025



1026



1027

- 1025 ★ #15, 1869 10c on 3p Lilac Rose, watermark Crown CC, Perf 12½ A tough mint single, well centered for this issue, bright colour and full intact perforations, part original gum. A nice stamp for the advanced collector, VF OG **3,000.00**
- 1026 ◎ #16, 1869 25c on 3p Orange, watermark Crown CC, Perf 12½ An appealing used example, relatively well centered for the issue, showing a pleasing and centrally struck oval grid '10' cancellation from William's Creek, F-VF **750.00+**
- 1027 ★ #17, 1869 50c on 3p Violet, watermark Crown CC, Perf 12½ A wonderful and unusually fresh mint example, well centered for the issue, very crisp impression on bright paper, one short perf at top, possessing full original gum, with light hinge mark. A nice stamp, VF OG **3,000.00**



- 1028 P NEW BRUNSWICK #7, 2c Queen Victoria Large Trial Colour Die Proof printed in black on india paper, 30 x 35mm, a rare showpiece, VF, ex. Sir Gawaine Ballie **Est. 1,250.00+**





## NOVA SCOTIA



- 1029 ★ #1, 1853 1p Red Brown on Blue Paper** An impressive mint example, post office rich and fresh colour, deep impression on fresh bluish wove paper, showing full to large margins and large part original gum, XF OG, *ex. Alfred H. Caspary* **9,000.00**

A RARELY ENCOUNTERED MINT EXAMPLE OF THE ONE-PENNY RED BROWN ON BLUE PAPER. A SUPERB STAMP FOR THE ADVANCED COLLECTOR.



- 1030 ★ #1, 1853 1p Red Brown on Blue Paper** A remarkable unused example showing four well balanced and full margins, gorgeous colour and nice impression on fresh paper. A scarce classic stamp to obtain in such top-quality, VF, 1972 RPS cert. **4,500.00**



- 1031 ★ #2, 1851 3p Blue on Bluish Paper** A rare unused strip of three, touching design at lower left corner, ample to large margins on other sides, tiny crease on left stamp, slight shallow thin and faint toning on centre stamp, a rare unused multiple with Fine appearance **2,400.00**
- 1032 ◎ #2, 1851 3p Blue on Bluish Paper** A choice used example with large to huge margins, showing portion of adjacent stamp on one side, clear impression and nice fresh colour, centrally struck oval grid cancellation, XF *(Illustrated on Page 15)* **300.00+**
- 1033 ★ #2b, 1857 3p Pale Blue on Blue Paper** An attractive and selected mint example with full to large margins, gorgeous pastel-like fresh colour and possessing large part original gum. A great stamp in all respects, VF OG *(Illustrated on Page 15)* **3,200.00**
- 1034 ◎ #2b, 1857 3p Pale Blue on Blue Paper** A handsome used example showing large to enormous margins, lovely fresh colour and impression, light oval grid cancellation, choice, XF *(Illustrated on Page 15)* **300.00+**



1032



1033



1034



1035



1036



1037



1038



1039

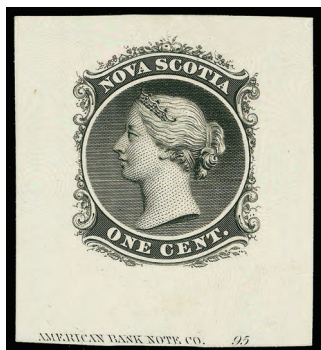
- 1035 ☉ **#2i, 1851 3p Bright Blue on Blue Paper** A beautiful used example with four large margins and lightly tied by oval grid cancellations on small piece. An attractive and choice stamp, VF, 1974 RPS cert. **300.00+**
- 1036 ☉ **#2i, 1851 3p Bright Blue on Blue Paper** An exceptional used example with large to extra large margins, gorgeous fresh colour and clear impression on fresh paper, ideal oval grid cancellation. A superb stamp in all respects, XF GEM **300.00+**
- 1037 ☉ **#4, 1851 6p Yellow Green on Blue Paper** A handsome used example showing clear to enormous margins, beautiful fresh colour and sharp impression, centrally struck oval grid cancellation, VF 1973 RPS cert. **900.00**
- 1038 ☉ **#4, 1851 6p Yellow Green on Blue Paper** A handsome used example with four full to large margins, deep colour and oval mute grid cancellation, VF, 2007 Greene Foundation cert. **900.00**
- 1039 ☉ **#4, 1851 6p Yellow Green on Blue Paper** Used single, well clear to large margins, nice colour and centrally struck oval grid cancellation, F-VF **650.00**



- 1040** ☉ **#4a, 1858 (May 11) Mourning envelope** mailed from Amherst to Halifax, bearing a diagonal bisect of the 6p yellow green used as the 3p domestic rate, large margins and neatly tied on all three sides by oval mute grid cancellation, dispatch Amherst (MY 11) backstamp, "MISSSENT-TO / St. JOHN N.B." clear handstamp, with St. John (MY 14) and oval Halifax (MY 17) receiver on back. A very scarce and desirable bisected cover, ideal for exhibition, VF, ex. *Frederick Mayer*, 2004 Greene Foundation cert. **Est. 5,000.00**



- 1041** ☉ **#7, 1sh Dull Violet on Blue Paper** Used single with nice bright colour, just in to small margins, light grid oval grid cancellation. An attractive example of this key stamp, Fine, 1973 RPS cert. **4,000.00**
- 1042** ☒ **#8/10, Selection of Cents Covers** Group of 13 covers, all addressed within the province, showing various dispatch cancellations, rates and frankings. Noted 1867 1c (five examples, some staining) from Halifax to Wallace; 2c County rate (1864-1868) four covers with single 2c and two covers with two 1c; two scarce 1861 early covers each with single 5c blue (one dispatch Halifax to Musquodoboit Harbour), etc. Condition mixed to Fine (Not Illustrated) **Est. 150.00+**



1043



1044

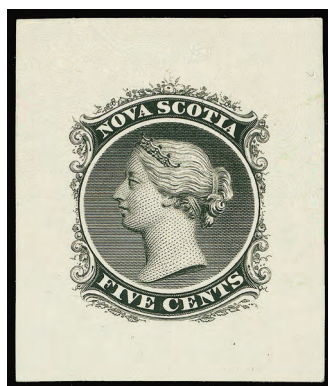
- 1043 P** **#8, 1c Black Queen Victoria** Die Proof printed in colour of issue on card mounted india paper, showing imprint and die number below, scarce, VF **Est. 750.00**



- 1044** ☒ **#8, 1867 (December 2) Folded wrapper** franked with pair of One cent black, right stamp with faults, tied by Halifax duplex cancellation to Stewiacke, Lower Stewiacke (DE 5) receiver backstamp. Paid the double circular rate, which was still valid after Confederation, very scarce thus, F-VF and desirable cover  
*(Illustrated on Page 16)* **Est. 250.00+**
- 1045** ★ **#9/13, Cents Issue Plate Imprint Multiples** Includes 2c on white paper top imprint block of eight; 8½c on yellowish paper top imprint block of nine; 10c left imprint block of ten and 12½c on yellowish paper right plate imprint block of twelve, all never hinged, F-VF  
*(Not Illustrated)* **Est. 300.00+**



1046



1047

- 1046** P **#10, 5c Queen Victoria "Goodall"** Die Proof printed in yellow brown on soft white wove paper, 24 x 30mm, mounted on card, 30 x 46mm, with imprint and die number below, a rare showpiece, VF  
**Est. 1,000.00+**
- 1047** P **#10, 5c Queen Victoria Trial Colour** Die Proof printed in black on card mounted india paper, 32 x 38mm. A rare proof, ideal for exhibition, VF  
**Est. 1,000.00+**
- 1048** ☒ **#10, 12, Cents Issue Covers to United States** Group of five covers; clean cover (VF) with 5c pair from Halifax (unclear date), three covers (Fine) franked with single 10c and other cover (faulty) with two single 10c.  
*(Illustrated on Website)* **Est. 200.00**



1049



1050



1051

- 1049** P **#11, 8½c Green Queen Victoria** Die Proof printed in colour of issue on india paper, 31x37mm, some minor mount marks mostly away from design, otherwise scarce and VF  
**Est. 500.00**
- 1050** P **#11, 8½c Queen Victoria Trade Sample Proof** printed in deep red violet on wove paper, nice rich shade, attractive, VF  
**Est. 250.00+**
- 1051** P **#13, 12½c Queen Victoria Large Die Proof** printed in black on india paper, 32 x 36mm, very scarce and ideal for exhibition, XF, ex. *Sir Gawaine Baillie*  
**Est. 1,000.00+**



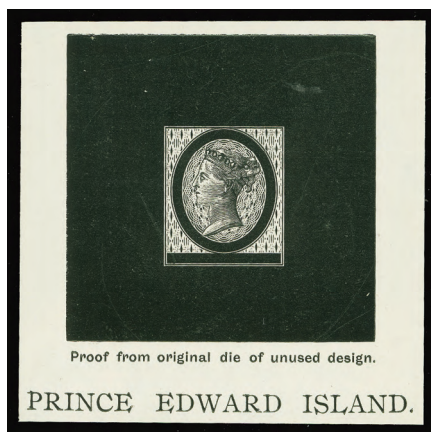
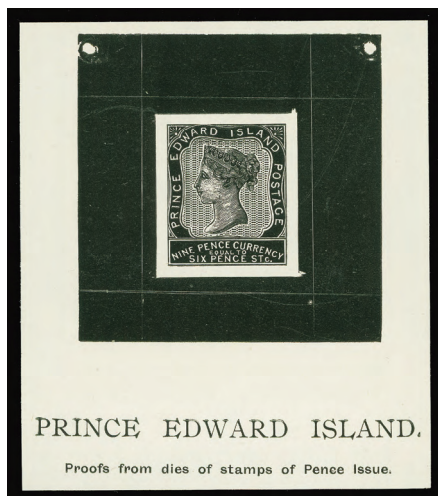


- 1052 ★◎ #1/5, Valuable Pence Issues** Grouping of 13 stamps; which includes 1p (unused with skillfully repaired margins and regummed); 3p blue (two used examples, both with trivial flaws but VF), 3p bright blue (three examples; mixed condition), 3p pale blue (one VF example with blue ink spot in "A" of "SCOTIA" and other example tied by bold grid on piece); 6p yellow green (used example with diagonal bisect of 3p pale blue, on small piece, plus two used examples, trivial flaws) and 6p dark green (two used examples, one faulty and other trivial flaws but latter with VF appearance).

**Est. 1,250.00+**

- 1053 ★◎ #8/13, Cents Issues** Grouping as received, with 38 stamps, mint or used from the 1c to 12½c, noted 1c dark violet trial colour plate proof pair on india paper, 12½c black left plate imprint NH block of four, etc. Also includes five covers (four have single 5c frankings). Condition mainly Fine throughout  
(Not Illustrated) **Est. 200.00+**

## PRINCE EDWARD ISLAND



- 1054 P #4/15, Tilleard Die Proofs** Complete set of eleven Reprint Die Proofs, printed in black on glazed white paper, prepared by J.A. Tilleard to illustrate an article in the January 1893 issue of the London Philatelist, very scarce set, VF **Est. 1,000.00+**
- 1055 P B #5, 2p Queen Victoria** Reprint plate proof block of eight, printed in black on glazed white paper, with full inscription in bottom sheet margin, surface thin and trivial toning in sheet margin only, VF  
(Illustrated on website) **Est. 350.00**
- 1056 ★S #6b, 3p Blue** Complete imperforate sheet of thirty on vertical white wove paper, ungummed, lightened vertical and horizontal pen line through third column and third row. A very scarce sheet, ideal for exhibition, VF, 2006 Greene Foundation cert. (Illustrated on Page 19) **1,500.00+**
- 1057 ★B #8, 1862-1865 9p Violet Queen Victoria** Selected and centered mint block of four, lovely colour and possessing full original gum, very light hinge mark at centre top only, leaving bottom pair never hinged. Rarely encountered multiple in premium condition, VF (Illustrated on Page 19) **720.00+**



1057



1058



1056



1059

- 1058 P B #9, 4p Queen Victoria Reprint plate proof block of eight, printed in black on glazed white paper, showing full inscription in bottom sheet margin, VF Est. 350.00
- 1059 ★ #9vii, 1868-1870 4p Black on White Wove Paper Quite well centered and rare gutter strip of four, unused (no gum), vertical fold in gutter as always, VF 1,000.00+





1060



1063



1062



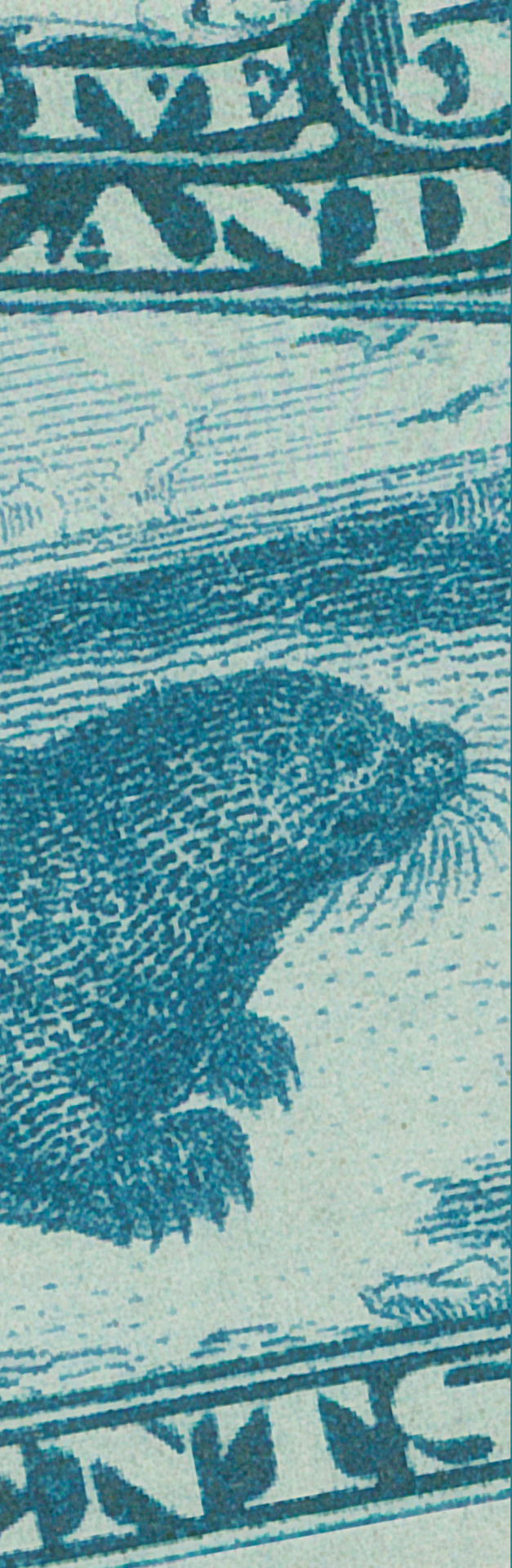
1061

- 1060 P** #10, 4½p **Brown Queen Victoria** Plate proof single, printed in colour of issue, on card mounted india paper, scarce and attractive, VF+ **Est. 350.00**
- 1061 ★ PB** #10, 1870 4½p **Brown Queen Victoria** Lower plate imprint block of twelve from the left-hand pane, faint trace of toning, unused. A rare large multiple for the advanced collector, F-VF **Est. 750.00+**
- 1062 P** #11, 1c **Queen Victoria** Trial colour plate proof printed in black on thin white wove paper, large margins and scarce, VF **Est. 250.00**
- 1063 ★** #11a, 1872 1c **Orange** Unused imperforate pair, large margined with sheet margin at foot, ungummed as issued, XF **300.00**
- 1064 P B** #13, 3c **Queen Victoria** Reprint plate proof block of eight, printed in black on glazed white paper, showing full inscription in bottom sheet margin and dot between "PRINCE EDWARD" (Position 17), VF *(Illustrated on website)* **Est. 350.00**
- 1065 P B** #16, 12c **Queen Victoria** Reprint plate proof block of eight, printed in black on glazed white paper, showing full inscription in bottom sheet margin, VF *(Illustrated on website)* **Est. 350.00**

Call us toll free in North America  
Dial 1(800) 667-8267  
or  
Fax us 1(888) 867-8267

# Newfoundland

Lots 1066 - 1158







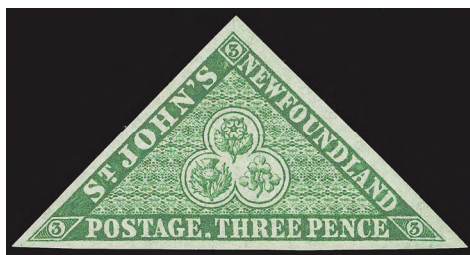
## NEWFOUNDLAND PENCE



- 1066 P** #3, 3p Trade Sample Proof (Perkins Bacon 1902 - Plate X) Pair printed in BRIGHT BLUE on thin hard yellowish wove paper, gummed (0.005"), showing portion of papermaker's watermark letters along one edge. A neat proof with striking colour, rare, VF **Est. 750.00+**



1067



1068

- 1067 ★** #3, 1857 3p Green A nice single with deep rich colour, adequate to full margins and large part original gum, VF OG **600.00**
- 1068 ★** #3, 1857 3p Green A choice mint example with large margins, rich colour and large part original gum, XF OG **600.00**



1069



1070

- 1069 P** #4, 1929 4p Trade Sample Proof (Perkins Bacon Plate 6) Singleprinted in carmine red on thick stiff white card (0.0085" to 0.0095"), undefaced. A scarce proof, VF **Est. 250.00+**
- 1070 F** #4, 4p Orange Vermilion Sperati "die" proof (Reproduction B), signed by him in pencil and with BPA handstamp on back, very scarce, VF **Est. 750.00**



- 1071   ⊙   **#6, 1857 6p Scarlet Vermilion** A remarkable used example of this rare stamp, showing adequate to huge margins, true rich colour, oval grid cancellation, choice, VF, 1987 Brandon cert.                   **6,000.00**



- 1072   ★   **#7, 1857 6½p Scarlet Vermilion** A rare unused example showing adequate to large margins, nice deep colour with sharp impression, VF and rare, 2007 Greene Foundation cert.                   **6,000.00**



1073



1074

- 1073   ★   **#8, 1857 8p Scarlet Vermilion** A superlative mint example, showing large sheet margin at foot and three extra large margins on other sides, deep rich colour with sharp impression, possessing full unblemished original gum, never hinged. A superb stamp which is virtually impossible to improve - for the perfectionist, XF NH GEM                   **1,500.00+**
- 1074   ★   **#8, 1857 8p Scarlet Vermilion** Nice mint example with full to large margins and large part original gum, signed A. Brun, VF OG                   **500.00**



- 1075** ☒ **#12**, 1861 (July 3) Entire folded lettersheet mailed from St. John's to Boston, endorsed "per mail via Halifax", franked with a nice single 1860 4p orange Heraldic, slightly touching design at upper right to large margins on three sides, tied by barred cancellation and St. John's dispatch datestamp in red, two different (JUL 12) Boston receivers (one on reverse). F-VF, 1986 BPA cert. **8,500.00**

Provenance: Dale-Lichtenstein, Robert Pratt

ONLY SIX COVERS BEARING THE FOUR PENCE ORANGE TO USA ARE KNOWN TO EXIST. THIS IS THE ONLY ONE TO BOSTON, ALL OTHERS BEING ADDRESSED TO BALTIMORE. A WONDERFUL SHOWPIECE.



**1076**



**1077**

- 1076** ★ **#22**, 1861-1862 8p Rose Bright fresh mint single with large margins and full original gum, VF NH **200.00**
- 1077** ★B **#23**, 1861-1862 1sh Rose Mint lower left sheet corner block of four, fresh with full original gum, VF NH **400.00**

Visit us online [www.easternauctions.com](http://www.easternauctions.com)

or

E-Mail us at [easternauctions@nb.aibn.com](mailto:easternauctions@nb.aibn.com)



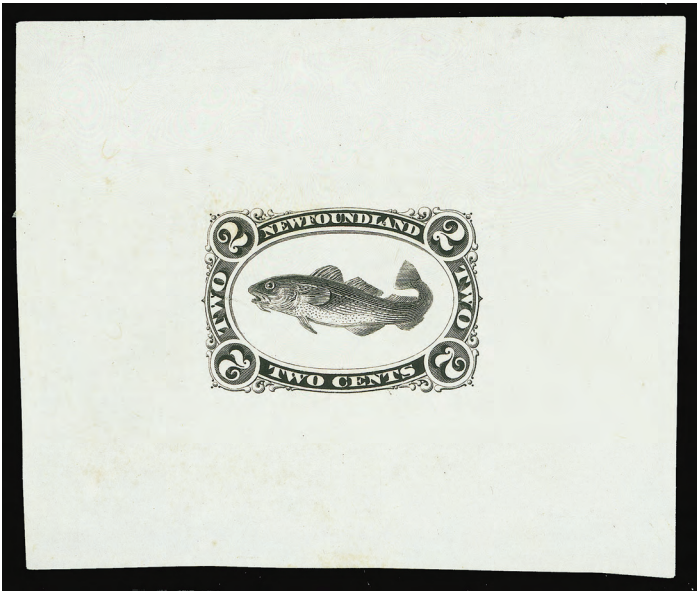
CENTS



- 1078 P #24-31, 2c-24c Cents Issue Complete set of six matching plate proof imprint strips of three, each  
PB showing full plate imprint at left, on card mounted india paper; all in issued colours except for the 12c  
in orange yellow. A beautiful and selected set, VF Est. 2,000.00



1079



1080

- 1079 E #24, Codfish Large Die Essay of central vignette only, engraved in black on india paper, 28 x 58mm,  
very rare and possibly UNIQUE proof, unlisted in Minuse & Pratt handbook. A wonderful showpiece,  
VF Est. 1,000.00+
- 1080 P #24, 2c Codfish Progressive Large Die Proof engraved in black on india paper, 69 x 58mm, without  
the horizontal lines behind central vignette, faint trace of toning, insignificant for this lovely and  
exceptionally rare proof, unlisted in Minuse & Pratt handbook. A superb showpiece, VFEst. 2,500.00+

To avoid disappointment be sure to mail your bid sheet early.

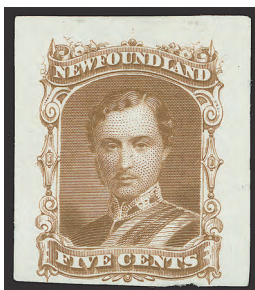


1081



1082

- 1081 ★ #25, 1865 5c Brown on Thin Yellowish Wove Paper** Very well centered mint single with large part original gum, negligible perf toning, mentioned for accuracy only. A great stamp, difficult to obtain in superior quality, VF OG **700.00**
- 1082 ★ #26, 1868 5c Black on Stout White Wove Paper** An impressive unused example, unusually well centered within large margins, fresh colour. A tough stamp to find, XF **600.00**



- 1083 E #27, 5c Prince Albert** Engraved Die Essay printed in brown on india paper, close at foot to large margins, showing the "FIVE CENTS" in value tablet instead of the issued "TEN CENTS", rare, F-VF **Est. 750.00+**



- 1084 ★ PB #27, 10c Black on Stout White Wove Paper** An impressive lower right sheet corner block of ten, showing plate imprint below bottom centre stamp (Position 98), reasonably centered and with lovely fresh colour, crisp impression and possessing full original gum, natural light gum bends as commonly seen on this issue, with nine stamps being never hinged, hinge remnant on lower right stamp, F-VF **7,500.00**

A REMARKABLE AND VERY RARE MINT MULTIPLE, WHICH ALSO RANKS AMONG THE LARGEST IN EXISTENCE





- 1085 ★ **#27, 1871 10c Black Prince Albert on Stout White Wove Paper** A desirable upper right sheet corner block of eight, showing plate imprint above stamp Position 8, reasonably centered for this notoriously difficult issue, gorgeous fresh colour and clear impression, possessing full original gum, hinge remnant on upper right stamp, leaving all other seven stamps in never hinged condition, rare thus and an ideal showpiece for the advanced collector, F-VF OG/NH, *ex. Sir Gawaine Baillie*  
**Est. 6,000.00**



1086



1087



1089

- 1086 ★ **#28, 1870 12c Pale Red Brown on Stout White Wove Paper** A lovely mint example with post office fresh colour, quite well centered for this notoriously difficult stamp and possessing full pristine original gum, never hinged. Catalogue value is irrelevant and much tougher to find than the re-issued 1894 Twelve-cent brown, VF NH  
**Est. 300.00+**
- 1087 ☉ **#28a, 1865 12c Pale Red Brown on Thin Yellowish Wove Paper** Scarce used example, well centered for the issue and showing a neat St. John's cork in steel ring cancellation, VF  
**250.00**
- 1088 ★B **#29, 1894 12c Brown on Medium White Wove Paper** An impressive and unusually well centered mint block of four, post office fresh and with full pristine original gum, a choice and seldom encountered multiple in such superior quality, XF NH  
*(Illustrated on Page 28)* **960.00+**
- 1089 ★ **#29, 1894 12c Brown on Medium White Wove Paper** Exceptionally well centered mint example, post office fresh colour and full pristine original gum, XF NH  
**240.00+**


Visit us online [www.easternauctions.com](http://www.easternauctions.com)

or

E-Mail us at [easternauctions@nb.aibn.com](mailto:easternauctions@nb.aibn.com)





1090  #29, 35, 45, 61, 1900 (June 19) Registered envelope mailed from St. John's, endorsed "Per S.S. Bruce, via North Sydney, New York" to Saxony, Germany, franked with four different issues (faint perftoning) and tied by neat oval registered postmarks from St. John's, paying 20c registered triple rate to Germany, Liverpool (2 JY) transit and Chemnitz (14.7.00) receiver backstamp. A rare and unusual franking, VF Est. 750.00



1088



1091



1092



1093

- 1091 ★B #30, 1865 13c Orange on Thin Yellowish Wove Paper A very scarce mint block of four, typical centering for the issue and possessing full original gum, never hinged, Fine and attractive.  
*ex. Sir Gawaine Baillie* (Illustrated on Page 28) **800.00**
- 1092 P #33, 3c Vermilion Plate proof block of six with full imprint in bottom margin, on card mounted india  
PB paper, vivid colour, scarce and attractive, VF (Illustrated on Page 28) **Est. 500.00+**
- 1093 ★ #36, 1894 6c Carmine Lake A beautiful left plate imprint block of six, well centered and possessing  
PB full original gum, never hinged, light gum bends as often seen, fresh, VF NH  
(Illustrated on Page 28) **Est. 750.00+**



- 1094 ★B #37, 1877 1c Brown Lilac, Rouletted Prince of Wales, superior mint block of four, unusually precise centering for the issue, very fresh and possessing full clean original gum. Rarely encountered multiple in top-quality, XF OG **Est. 1,000.00+**



1095



1096

- 1095 ★B #40, 1877 5c Blue Harp Seal, Rouletted An attractive positional mint block of four, precisely centered and fresh, showing almost full imprint in oversize left margin of upper left stamp, full original gum, lightly hinged. A nice multiple, VF LH **1,200.00+**
- 1096 ★ #40, 1877 5c Blue Harp Seal, Rouletted A premium mint example, quite well centered and with gorgeous post office fresh colour and possessing full pristine original gum, never hinged. A choice stamp, VF NH **1,650.00**
- 1097 ★ #43, 1896 1c Brown Prince of Wales A remarkable top plate imprint block of eight with lovely fresh  
PB colour and full pristine original gum, never hinged, trivial gum wrinkles on upper left stamp, negligible for this rare plate multiple, F-VF NH, *ex. Sir Gawaine Baillie*  
(Illustrated on Page 30) **Est. 1,500.00+**
- 1098 ★ #43, 1896 1c Brown Prince of Wales A superior mint example, very well centered and with gorgeous rich colour, full pristine original gum. A choice stamp, XF NH  
(Illustrated on Page 30) **450.00+**





1097



1098



1099

- 1099 ★ #43, 1896 1c Brown Prince Of Wales An exceptional mint example, precisely centered with well balanced margins, deep rich colour on fresh paper and possessing full unblemished original gum, never hinged. Very seldom encountered stamp in such top quality, XF NH **450.00+**



- 1100 ★ PB #45, 1896 1c Green Prince Of Wales Right sheet margin block of twelve, showing full imprint, mint with full original gum, very scarce, F-VF NH showpiece, *ex. Sir Gawaine Baillie* **Est. 750.00+**



1101



1103

- 1101 ★B #45, 1896 1c Green Prince of Wales Selected mint block of four, centered and with fresh colour, full original gum, seldom seen multiple in choice condition, VF NH **300.00+**





1102



1107



1104



1106

- 1102 ★  
PB #48, 1887 2c Red Orange Codfish A spectacular right margin block of eight showing the full imprint, lovely fresh colour, remarkably well centered and possessing full immaculate original gum, never hinged. A rarely encountered plate multiple, especially in such top-quality. Among the finest we have seen, XF NH **Est. 1,250.00+**
- 1103 ★B #49, 3c Blue Queen Victoria Brilliant fresh mint block of four, quite well centered, natural paper inclusion on upper right stamp, full original gum, a scarce multiple, F-VF NH, *ex. Sir Gawaine Baillie (Illustrated on Page 30)* **Est. 600.00**
- 1104 ★B #53, 1880 5c Pale Blue Harp Seal An attractive mint block of four, trivial stain spot between top pair, colour unusually deep for this early and scarce printing, possessing full original gum, left stamp being never hinged. A rare multiple for the specialist, Fine+, 2006 Greene Foundation cert. **Est. 1,000.00+**
- 1105 ★B #55, 1894 5c Bright Blue Harp Seal Post office fresh mint block of four, sheet margin at top, full original gum, F-VF NH *(Illustrated on website)* **440.00**
- 1106 ★  
PB #57, 1896 1/2c Orange Red Newfoundland Dog Bottom plate imprint block of eight, fresh colour, mint with full original gum, scarce, F-VF OG **Est. 750.00**



**1107 ★B #59, 1894 10c Black Schooner** An impressive mint block of twelve, lovely fresh colour and possessing full original gum, never hinged. One of largest known multiples, F-VF NH, *ex. Sir Gawaine Baillie* (Illustrated on Page 31) **3,720.00**



1108



1109

**1108 ★B #60, 1890 3c Slate Queen Victoria** An exceptionally well centered and fresh mint block of four, rich colour and impression, with full original gum, never hinged, very scarce thus, XF NH **600.00+**

**1109 ★ #60, 1890 3c Slate Queen Victoria** Lovely fresh mint example, unusually well centered for the issue and possessing full original gum, choice, VF+ NH **Est. 250.00**

**1897 DISCOVERY OF NEWFOUNDLAND**



**1110 P B #61-74, 1897 1c-60c Discovery of Newfoundland** An impressive and complete set of fourteen plate proof blocks of ten, all with sheet margin one or two sides, on card mounted india paper, VF **Est. 7,500.00**

QUITE POSSIBLY THE LARGEST EXISTING PLATE PROOF MULTIPLES SET OF THIS POPULAR ISSUE.





1111



1112

- 1111 ★♦ #67, XF-SUPERB (95J) 1897 8c red orange Fishing, a stunning mint example with incredibly large margins for the issue, very well centered and fresh, with full original gum, never hinged. A eye-appealing jumbo stamp. 2007 Sismondo cert. 95J XF-SUPERB **50.00+**
- 1112 ★♦ #69, SUPERB (98) 1897 12c dark blue Willow Ptarmigan, exceptionally well centered within well balanced margins, lovely fresh colour and possessing full unblemished original gum, never hinged. A very tough stamp to find in such top-quality. 2007 Sismondo cert. 98 SUPERB **60.00+**

1897 – 1901 ROYAL FAMILY



1113



1114

- 1113 ★B #78, 1897 1/2c Olive Green Lower right sheet corner mint block of eight, with security punch and American Bank Note "SPECIMEN" handstamp overprint in carmine, F-VF NH **Est. 500.00**
- 1114 ★B #80, 1898 1c Yellow Green Queen Victoria Lower left sheet corner block of eight, with security punch and American Bank Note "SPECIMEN" handstamp overprint in carmine, fresh and with full original gum, F-VF NH **Est. 400.00**



1115



1117

- 1115 ★B #82, 1898 2c Vermilion King Edward VII Lower right sheet corner block of four, with security punch and American Bank Note "SPECIMEN" handstamp overprint in carmine, VF NH **Est. 200.00**





- 1116 ★ **#82a, 1898 2c Vermilion King Edward VII** Mint imperforate pair, creased between stamps and cut close at foot as usually seen, otherwise Fine OG, rarely seen *(Illustrated on website)* **250.00**
- 1117 ★ **#83, 1897 3c Orange Queen Alexandra** Bottom sheet margin plate imprint block of eight, with security punch and American Bank Note "SPECIMEN" handstamp overprint in blue, fresh and with full original gum, Fine NH *(Illustrated on Page 33)* **Est. 500.00+**



1118



1119

- 1118 ★B **#87, 87ix, 87xii, 87xiv, XF (90)** 1910 1c deep green King James I (Lithographed), perf 12x11, left sheet margin block of four, showing "NFW" and "JAMRS" plate varieties on top pair, and "ONE CENT" variety on lower right stamp, well centered, very light hinge mark at bottom centre, leaving top pair NH. Accompanied with graded cert for the upper left stamp. 2008 Sismondo cert. 90 XF **360.00**
- 1119 ★♦ **#90, XF-SUPERB (95)** 1910 4c dull violet Guy's Ship (Lithographed), perf 12, very well centered and fresh mint example with full original gum, never hinged. 2008 Sismondo cert. 95 XF-SUPERB **400.00+**

### 1911 ROYAL FAMILY



- 1120 P B **#104, 1c Queen Mary** Trial colour plate proof block of eight, showing vertical gutter margin between blocks, printed in black on thick card, vertical fold in gutter margin as do all known examples, a rare showpiece, VF **Est. 2,000.00**

To avoid disappointment be sure to mail your bid sheet early.



1121 ★B #104a, 1911 1c Yellow Green Queen Mary Imperforate upper right sheet corner block of eight, ungummed as issued. A UNIQUE MULTIPLE, VF **1,600.00**



1122 P #109, 6c Black Prince Henry Large Die Proof printed in colour of issue on glazed white wove paper, mounted on card, 49 x 57mm, thinned spot on card backing paper only, of no importance for this rare proof, VF **Est. 750.00+**

1920 PROVISIONAL SURCHARGES



1123 ★ #128a, 1920 (September 13) 3c on 15c Scarlet Seals (bars 10½mm apart - Type I) Centered mint example with INVERTED SURCHARGE ERROR, large part original gum. Only one sheet of 25 have been printed, very rare, VF OG **3,000.00+**





- 1124 ★B #130ii, 1920 (September 15) 3c on 35c Red Iceberg Lovely fresh positional mint block of four, showing dramatic "missing" THREE overprint on upper right stamp, reasonably centered and with full original gum, lightly glazed, otherwise never hinged. A rare multiple, F-VF **Est. 1,500.00+**



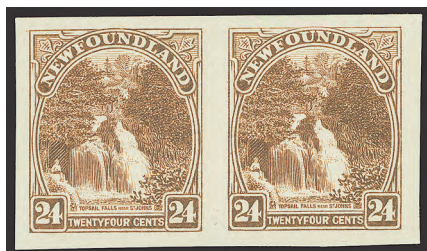
1125



1126

- 1125 P #133, 3c War Memorial Trial Colour Die Proof, printed in brownish orange on wove paper, 26x27mm, rarely seen, VF, ex. *Sir Gawaine Baillie* **Est. 300.00+**

- 1126 ★ #134a, 1923-1924 4c Brown Violet Humber River Fresh imperforate mint pair with full original gum, VF NH **375.00**



1127



1128

- 1127 P #144, 24c Black Brown Plate proof pair in near colour of issue on unwatermarked bond paper, VF **Est. 300.00**

- 1128 P #144, 24c Indigo Trial colour plate proof pair, unfinished, unwatermarked bond paper, VF **Est. 250.00**



- 1129 ★ #160ii, 1929 (August 23) 3c on 6c Grey Black Humber River An attractive mint example with rare SURCHARGE IN BLACK (Type II - 3mm spacing between CENTS and bar), nicely centered and fresh with full original gum, VF NH, 2002 Greene Foundation cert. **2,450.00**



- 1130 ★B #163c, 1929-1931 1c Green Map of Newfoundland (Re-engraved) Unwatermarked Imperforate block of four, unused and ungummed as issued, VF *(Illustrated on website)* **300.00**
- 1131 ★ #163ii, 1c Green Map of Newfoundland, (Re-engraved) Unwatermarked Vertical mint pair, imperforate horizontally between bottom stamp and sheet margin, with normal stamp at top, variety is never hinged, F-VF *(Illustrated on website)* **275.00**



1132



1133

- 1132 ★ #165a, 1929-1931 3c Deep Red Brown, (Re-engraved) Unwatermarked Imperforate mint pair, VF LH **150.00**
- 1133 ★ #166a, 1929-1931 4c Magenta, (Re-engraved) Unwatermarked Fresh imperforate mint pair, VF LH **180.00**
- 1134 ★♦ #171, XF-SUPERB (95) 1929-1931 20c grey black Colonial Building, re-engraved, unwatermarked, very well centered mint example, lovely fresh colour and full original gum, lightly hinged. 2008 Sismondo cert. 95 XF-SUPERB *(Illustrated on website)* **100.00+**

1932 – 1937 RESOURCES



1135



X1136

- 1135 ★ #183a, 1c Green Codfish, Line Perf 13 Booklet pane of four, originating from the upper right corner of the booklet sheet, showing imperforate gutter margin at foot and extra horizontal line of perforation at top, thin in selvage only at upper right, otherwise scarce and unusual, F-VF NH **Est. 500.00**
- 1136 ★ #183a, 185b, 187c, 1932-1937 1c, 2c & 3c Resources Issues Fresh mint booklet panes of four, all three line perf 13, VF NH **390.00**



- 1137 ★ #184i, 186i, 187ii, 1932-1937 1c Grey Black Codfish 2c green King George V, Die I and 3c orange brown Queen Mary, Line Perf 14, set of three vertical strips of four with horizontal gutter margins, originating from the booklet pane sheets. A rare set, F-VF NH **Est. 1,500.00**

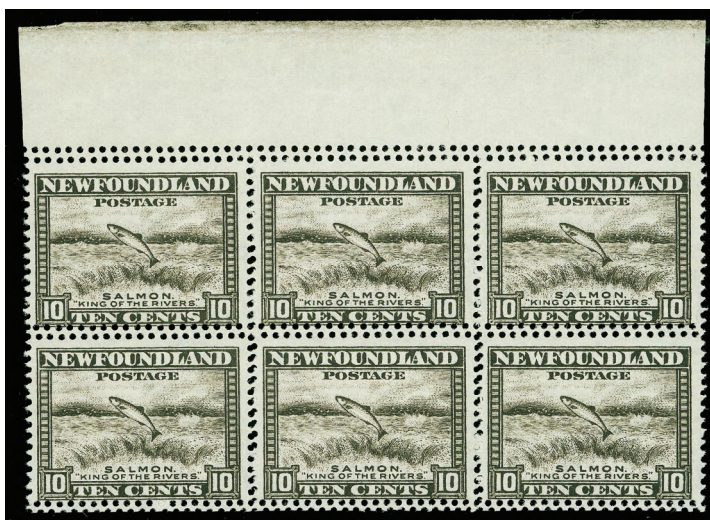


1138



1140

- 1138 ★ #185iii, 1932-1937 2c Rose King George V, Line Perf 13 Fresh mint single, imperforate between top sheet margin and stamp, F-VF NH **120.00**
- 1139 P B #189, 4c Rose Lake Prince of Wales Plate proof block of four on thick brown bond paper, unwatermarked, showing overall double impressions of other values on front and on back, unusual and interesting multiple for the specialist, VF *(Illustrated on website)* **Est. 200.00**
- 1140 P #191, 5c Red Violet, Die II Plate proof pair on unwatermarked bond paper, showing blue "moire" lines on back, VF **Est. 250.00**

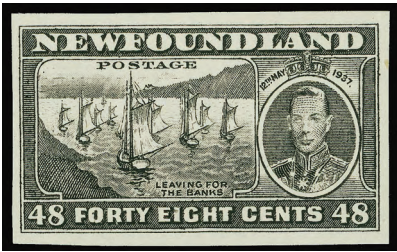


- 1141 ★ B #193ii, 1932-1937 10c Olive Black Leaping Salmon Top sheet margin mint block of six, showing a remarkable double perforation error (horizontally and vertically). A very scarce multiple, VF NH *ex. Sir Gawaine Baillie* **900.00+**





1142 ★B #193iii, 1932-1937 10c Olive Black Salmon Leaping Imperforate mint block of four, sheet margin at foot, showing a dramatic and strong double print error, some minor soiling on gum entirely in bottom margin. A very scarce and striking multiple, VF NH 3,750.00



1143 P #233-243, 1c-48c King George VI Long Coronation Complete set of eleven trial colour plate proofs, printed in black on unwatermarked bond paper; 1c showing the security "moire" lines in blue on the back. A scarce and attractive set, VF Est. 1,000.00



1144 P #234, Orange Brown KGV Coronation Plate proof pairs, Die I and Die II, on unwatermarked bond paper, scarce duo, VF Est. 600.00





- 1145 ★ #255var., 1941-1944 3c Rose Carmine Queen Elizabeth Fresh imperforate mint pair, rare and unlisted, VF NH Est. 400.00

### AIR POST



- 1146 P #C6-C8, 15c, 50c & \$1.00 Pictorial Airmail Issue Set of three trial colour plate proof singles printed in black on unwatermarked bond paper, VF Est. 750.00+



- 1147 ★B #C12, 1932 (May 19) \$1.50 on \$1 Blue Dornier DO-X Flight Post office fresh and well centered complete setting of four, full pristine original gum, scarce in choice condition, VF NH 3,200.00

Have you been thinking of selling your collection?  
 Call us 1(800) 667-8267 ask for Gary J. Lyon.  
 Give your collection the attention it deserves.  
 Consign your stamps to Eastern Auctions Ltd.



- 1148 ☒ #C12, 1932 (May 19) Dornier DO-X Flight cover sent to England bearing single \$1.50 on \$1 blue surcharge stamp and tied by clear St. John's slogan datestamp, London (26 MAY) datestamp on front with additional boxed UNDELIVERED FOR REASON STATED / RETURN TO SENDER" in blue and "Insufficiently addressed / E.C.1" in black, unusual and scarcer than the regular DO-X flight cover, VF Est. 500.00+

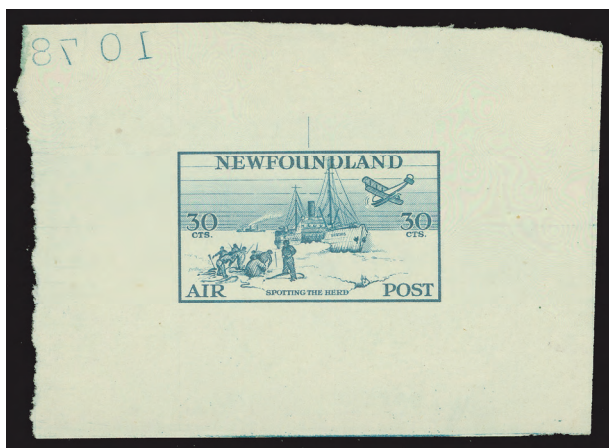


- 1149 ★ #C13-C17, 1933 5c-75c "Labrador" Issue Well centered and fresh mint set of five, choice, VF NH 408.00



- 1150 ☒ #C13a, 1933 5c Light Brown "Labrador" A choice imperforate mint block of four, sheet margin at left, huge margins on other sides, full original gum, XF NH 1,120.00
- 1151 ★B #C14a, 1933 10c Yellow Orange "Labrador" Imperforate Lower left sheet corner block of four, large margins on other two sides, fresh and with full original gum, choice, XF NH 800.00





- 1152 P #C15, 1933 30c Blue "Labrador" Large Die Proof printed in colour of issue on wove paper, 75 x 55mm, showing reverse die "1078" number at upper left corner, rare, VF **Est. 1,000.00+**



- 1153 ★B #C18iv, 1933 (July 24) \$4.50 on 75c Bistre Balbo Flight Complete setting of four, well centered, perf 14½, lovely fresh colour and with full original gum, never hinged. Scarce especially in choice condition, VF NH **4,160.00**

### NEWFOUNDLAND REVENUES



- 1154 ★ #NFB1, 1938 10/12c Blue Beer Stamp, Perf 12x13¼ A most attractive and very seldom seen stamp, lovely fresh colour and nicely centered, unused without gum as issued, VF **1,600.00**

Call us toll free in North America  
Dial 1(800) 667-8267  
or  
Fax us 1(888) 867-8267



- 1155 ★ **#NFR36-NFR43, 1943 5c-\$20 Caribou Issue (Bradbury, Wilkinson Printing)** An impressive complete matching set of imperforate plate 2a imprint blocks of six, three values with printer's crayon markings in sheet selvage, all with lovely fresh colours, large margins and with full original gum, never hinged, VF **Est. 7,500.00+**

PB

Provenance: Bradbury, Wilkinson Archives

A UNIQUE POSITIONAL IMPERFORATE SET AND AN IDEAL REVENUE SHOWPIECE.

- 1156 ☒ 1931 (February 20) Lighthouse Department OHMS Envelope mailed from St. John's East with dispatch slogan cancellation, addressed to the lightkeeper at Frenchman's Head, Bay of Islands, free of charge, with original pay slip receipt inside, light vertical centre fold, otherwise a very scarce cover. F-VF **(Illustrated on website) Est. 250.00**



- 1157 ★ **#1/J6, Valuable and Extensive Mint Collection** A nice and clean collection, appears COMPLETE for the period covered, all in clear mounts and housed in a White Ace album. Includes back-of-book issues and coil issues (in pairs). A good percentage of issues, especially later issues are in never hinged condition. Overall quality is mainly VF throughout **Est. 1,500.00+**

- 1158 ★ **#18/185, Grouping of Early Mint Issues** Many dozen mint issues, displayed on stockpages, value concentrated on Cents issues to 1910, some duplication on lower valued stamps and condition is mixed to very fine. High catalogue value and worth a look. **(Not Illustrated) Est. 500.00+**



# **Canada's Most Trusted Auction House Would Like To Showcase Your Collection.**

Since 1980 we have steadily built a reputation for outstanding realizations. Take advantage of our friendly and professional service. Your collection will be described by our expert lotterers and lavishly illustrated in our deluxe catalogue. Commission rates are very competitive and prompt payment is always guaranteed.

We are now accepting consignments for our upcoming Public Auction. Contact us today.

**Toll Free in North America  
Tel 1(800) 667-8267 - Fax 1(888) 867-8267**

## **Eastern Auctions Ltd.**

P.O. Box 250 - Bathurst - New Brunswick - E2A 3Z2 - Canada

Email [easternauctions@nb.aibn.com](mailto:easternauctions@nb.aibn.com) - Web [www.easternauctions.com](http://www.easternauctions.com)

Member ASDA - CSDA - PTS - APS - RPSC

# Canada

Lots 1159 - 1537







## PROVINCE OF CANADA



- 1159 E** **Victoria Head** Die Essay (stamp size) engraved in black on card mounted bond paper, sharp impression and fresh. An appealing and rare proof, XF (Minuse & Pratt #E-Ba) **Est. 1,500.00**

## PENCE



1160



1161



1162

- 1160 ☉** **#1, 1851 3p Red on Handmade Laid Paper** A handsome used example, four full to large margins, centrally struck concentric rings cancellation, VF **1,600.00**
- 1161 ☉** **#1, 1851 3p Red on Handmade Laid Paper** Used example, clear at left to large margins, concentric rings cancellation, lightly smudged, Fine+ **800.00**
- 1162 ☉** **#1a, 1851 3p Orange Red on Handmade Laid Paper** A handsome used example with full to large margins, brilliant fresh colour, nice impression and with light centrally struck concentric rings cancellation in black, a choice stamp, VF **1,600.00**



1163



1164

- 1163 ☉** **#2, 1851 6p Slate Violet on Handmade Laid Paper** Used vertical pair, repaired in places along sides but showing large portion of (MO)NEY LETTER straightline handstamp cancellation in black, very rare especially in a multiple, Fine appearance **Est. 2,000.00+**
- 1164 ☉** **#2, 1851 6p Greyish Purple on Handmade Laid Paper** An attractive used example, showing sharp laidlines, deep rich colour, just touching outer frameline at lower left to full margins, light concentric rings cancellation in black, Fine, 1975 PF cert. **1,250.00**



- 1165 ☒ #2, 1853 (April 4) Folded cover mailed from Montreal to USA, franked with single Six pence slate violet on handmade laid paper, slightly into outer frameline at left to huge margins, showing portion of adjacent stamp at top, tied by centrally struck concentric rings in black and alongside straightline "PAID" and framed arc "CANADA" handstamps in red, dispatch datestamp in red, addressee name excised, otherwise F-VF ex. *Jarrett* **Est. 1,000.00+**



- 1166 P #3TC, 12p Vermilion Trial Colour Die Proof printed on india paper, 28x30mm, showing the "scar" in "E" of "PENCE", lovely fresh colour and deep sharp impression, a very scarce and appealing proof for exhibition, VF **8,000.00**



1167



1169

- 1167 ★ #4, 3p Red on Medium Wove Paper An attractive mint example, showing full even margins, gorgeous colour and deep impression, and possessing part original gum, trivial wrinkle not mentioned in accompanying certificate. A choice mint stamp, VF OG, 1977 PF cert. **4,000.00**
- 1168 ☉ #4a, 3p Brown Red on Medium Wove Paper Used example, cut into at foot to large margins, showing a very fine and centrally struck four-ring '15' (RF8 - very rare) cancellation from Guelph, U.C., Fine *(Illustration on Page 48)* **Est. 250.00+**
- 1169 ☉ #4c, 1857 3p Red on Ribbed, Soft Wove Paper A handsome used example with ample to full margins, neat Toronto diamond-shaped grid cancellation in black, choice and seldom seen so nice, VF, 1971 BPA cert. **750.00**





1168



1170



1171

- 1170 ☉ #4c, 3p Red on Ribbed, Soft Wove Paper** Used example with small to full margins, light four-ring cancellation, F-VF, 1993 Greene Foundation cert. **575.00**

- 1171 ☉ #4d, 1853-1854 3p Orange Red on Thin Crisp Wove Paper** A superb used example, nice colour with large margins and showing neat and almost complete concentric rings cancellation in black, XF **300.00+**



- 1172 ★ #4ii, 3p Orange Red on Medium Wove Paper** A most desirable mint example, full even margins, brilliant fresh colour and sharp impression, possessing full original gum that has been lightly hinged. A choice stamp for the meticulous collector, VF LH **4,000.00**

A GREAT STAMP IN ALL RESPECTS. MUCH NICER THAN NORMALLY ENCOUNTERED FOR THIS POPULAR STAMP.



1173



1174



1176

- 1173 ☉ #5i, 1855 6p Slate Grey on Medium Wove Paper** A handsome used example showing a strong and rare HORIZONTAL STITCH WATERMARK, deep colour and impression, clear to large margins and neat concentric rings cancellation in black. A desirable and rare variety for the specialist, VF, 1989 Greene Foundation cert. **5,000.00**

- 1174 ☉ #7, 1855 10p Blue on Thin, Crisp, Transparent Paper** An attractive used example with close to large margins, deep colour and impression, showing a centrally struck concentric rings cancellation in black and portion of red circular cancel in upper left corner, F-VF, 2001 PF cert. **1,875.00**

- 1175 F #7, 10p Jacques Cartier** Engraved forgery in blue on thin white wove paper, crude black cancellation added, scarce and quite well executed, VF *(Illustrated on website)* **Est. 100.00+**

- 1176 ☉ #7a, 1857 10p Blue on Thick, White Opaque Wove Paper** A nice used example, just clear at lower left to large margins, deep colour and crisp impression, light grid cancellation, F-VF **1,875.00**



- 1177 ☉ **#7ai, 1857 10p Dull Blue Shade on Thinner White Opaque Wove Paper** Horizontal used pair, skillfully improved left margin, light thins, otherwise clear to full margins and a rarely seen used multiple, VF appearance, *ex. Dale-Lichtenstein* **5,000.00**



1178



1179

- 1178 ★ **#8, 1/2p Rose** Mint example with full to large margins, deep colour which shows signs of colour oxidation, possessing full original gum, never hinged, VF NH (Catalogue valuation is for mint OG only), clear 1981 Greene Foundation cert. **2,700.00+**
- 1179 ★ **#8, 1/2p Lilac Rose** A gorgeous mint single, clear to large margins, deep fresh colour and impression, possessing large part original gum. A nice stamp, F-VF OG **2,000.00**



- 1180 ☉ **#9, 7 1/2p Green** A selected used example, showing well clear to large margins, nice colour and lightly cancelled by light unobtrusive town postmark, VF, signed A. Brun, 2007 Greene Foundation cert. **4,500.00**



- 1181 ☉ **#9, 1857 7 1/2p Green Queen Victoria** A handsome used example, well clear to large margins, cancelled by light four-ring '19' cancel from London, U.C., nice colour and deep impression, a tiny pressed crease mentioned in the accompanying certificate is barely visible even in fluid, VF, 2002 BPA cert. **4,500.00**





- 1182 ★ #10, 1857 6p Reddish Purple Prince Albert on Very Thick Soft Wove Paper** An impressive unused example showing unusually large margins for this exceptionally difficult stamp, shallow thin as often seen on this delicate paper, possessing true colour and deep clear impression, Very Fine  
**25,000.00**

Expertization: photocopy of 1995 Greene Foundation cert (No. 7108).

AN EXCEPTIONALLY RARE UNUSED STAMP, ONE OF THE MOST DIFFICULT STAMPS OF ALL BRITISH NORTH AMERICA TO OBTAIN IN UNUSED CONDITION. TO THE BEST OF OUR KNOWLEDGE, ONLY ABOUT TWELVE UNUSED EXAMPLES HAVE BEEN REPORTED, THE MAJORITY OF WHICH HAVE FAULTS AND / OR SMALL MARGINS. THE EXAMPLE OFFERED HERE HAS LARGE MARGINS AND EASILY RANKS AMONG THE NICEST IN APPEARANCE. AN IMPORTANT CLASSIC STAMP, MISSING FROM MOST ADVANCED COLLECTIONS.



- 1183 ★ #11, 1859 ½p Rose, Perf 11¼** A remarkable mint example, unusually well centered for this notoriously difficult stamp, brilliant fresh colour and possessing large part original gum, minute crease at foot, negligible and mentioned for the record only, VF OG  
**10,000.00**

Provenance: Dale-Lichtenstein

A MOST DESIRABLE EXAMPLE OF THE 1859 ONE HALF PENNY ROSE, CANADA'S FIRST PERFORATED ISSUE. CENTERING IS MUCH SUPERIOR THAN THE FEW REMAINING EXAMPLES WITH ORIGINAL GUM.

## CENTS

- 1184 P** #14, 1c Deep Rose Plate proof single, sheet margin at left showing re-entry in "POST" and along top frameline (Position 51), on card mounted india paper, VF *(Illustrated on website)* **Est. 300.00+**
- 1185 P** #14P, 1c Deep Rose Plate proof single on india paper, VF *(Illustrated on website)* **250.00**
- 1186 ☉** #14, 1c Rose, Perf 12 Selected used example with bright colour, unusually well centered and clear AP 8 1868 datestamp, VF *(Illustrated on Page 52)* **125.00+**



- 1187 ★B** #14b, 1c Deep Rose, Perf 11¼ A superior and remarkable mint block of four, well centered for this notoriously difficult issue, unusually deep rich colour and sharp impression, possessing large part original gum, VF OG **6,400.00**

VERY FEW MINT ONE-CENT ROSE PERF 11¼ MULTIPLES ARE KNOWN TO EXIST.  
A CHOICE MINT BLOCK FOR THE ADVANCED COLLECTOR.

- 1188 ☉** #14b, 1c Rose, Perf 11¼ Handsome used example, well centered for the issue, nice colour and portion of town postmark, VF *(Illustrated on Page 52)* **175.00**



1189



1190



1191

- 1189 ★** #14bii, 1c Rose on Very Thick Wove Paper, Perf 11¼ A rare unused example (0.0043" thick), nice colour and impression, quite well centered for the issue. A great stamp for the specialist, VF **1,500.00+**
- 1190 ★** #14viii, 1c Rose, Perf 12x11¼ An exceptional mint example, with lovely rich colour and sharp impression, possessing large part original gum and lightly hinged. A choice stamp, VF LH **1,000.00+**
- 1191 ★** #14viii, 1c Rose, Perf 12x11¼ A choice and very well centered mint single, with nice colour and possessing large part original gum. A difficult stamp to obtain in top-quality, VF OG **1,000.00**





1186



1188



1192

- 1192** ☉ **#14viii, 1c Rose, Perf 12x11¼** A beautiful used example showing short transfer plate variety on upper left, neat and central struck four-ring '47' (very scarce) cancel from Three Rivers, C.E., F-VF **125.00+**



- 1193** ★ **#15, 5c Vermilion, Perf 12** A desirable and very scarce horizontal mint pair, well centered for the issue, rich colour with deep impression, large part original gum, F-VF OG *ex. Greene* **2,200.00**



- 1194** ★ **#15, 5c Vermilion, Perf 12** A spectacular mint example, precisely centered, within uncommonly seen large margins, brilliant fresh colour and clear impression, possessing large part original gum, XF OG **1,500.00+**

A SUPERB FIVE-CENT BEAVER, MINT WITH ORIGINAL GUM. THE FINEST EXAMPLE WE HAVE SEEN. A DESIRABLE STAMP FOR THE PERFECTIONIST.



1195



1196

- 1195** ★ **#15ii, 5c Orange Red, Perf 12** Exceptionally well centered mint example, perforations well clear of the design on all four sides, nice fresh colour and possessing full original gum. A great stamp in all respects, XF OG **1,500.00+**
- 1196** ☉ **#15v, 5c Vermilion, Perf 12, Major Re-entry (Position 28)** Used example with deep colour and impression, minute thin spot (negligible), a very nice example, Fine+ **500.00**



1197



1200

- 1197 ★ #17, 10c Red Lilac, Perf 12x11¼ A remarkable unused example, relatively well centered for this difficult stamp, lovely fresh colour. A nice stamp, F-VF **1,150.00**
- 1198 ☉ #17, 10c Red Lilac, Perf 11¼ An attractive used example with clear and centrally struck four-ring '26' (RF6 - rare) from Owen Sound, Fine+ *(Illustrated on Page 54)* **Est. 250.00**



- 1199 ★ #17b, 10c Brown, Perf 12x11¼ A spectacular mint example, beautiful and unusually deep fresh colour, sharp impression on fresh paper, exceptionally well centered with full intact perforations, possessing full original gum, XF OG **3,000.00+**

A SUPERB TEN-CENT BROWN MINT ORIGINAL GUM. THIS STAMP IS VERY RARELY OFFERED IN SUCH TOP-QUALITY, WHICH WOULD BE VIRTUALLY IMPOSSIBLE TO IMPROVE. WORTHY OF THE FINEST COLLECTION.

- 1200 ★ #17b, 10c Purplish Brown, Perf 11¼ A choice unused example, well centered for this difficult issue with nice deep rich colour, couple toned perforations at upper left (negligible), almost Very Fine centering, 1968 RPS cert. **1,150.00**



1201



1202

- 1201 ☉B #17b, 10c Brown, Perf 11¼ Unusually well centered used block of four, with light Ottawa 1861 duplex cancellations, some toning spots, soiling on back and trivial flaws, a rare and desirable used multiple, VF appearance **Est. 500.00+**
- 1202 ☒ #17b, 1861 (October 15) Envelope mailed from Montreal to U. S. bearing an exceptionally well centered 10c brown, perf 11¼, large margins and neatly tied by duplex grid cancellation, slight cover soiling and missing right backflap, with clear Rouses Point, NY transit backstamp, VF **Est. 150.00**





1198



1203



1204

- 1203 ☉ #17e, 10c Deep Red Purple, Perf 11¼ (Second Printing)** A nice used example with true deep rich colour and impression, light grid cancellation, Fine+ **500.00+**

- 1204 ☉ #17e, 10c Deep Red Purple, Perf 11¼ (Second Printing)** A scarce used example of the second printing, typical centering for the issue, true deep rich colour, Fine **500.00**



1205



1208

- 1205 ★ #18, 12½c Bluish Green, Perf 12** A remarkable unused example, nice pastel colour, very well centered within unusually large margins with perforations well clear of the design on all four sides. XF **1,250.00+**



1206



1207

- 1206 ☒ #18, 1865 (January 27)** Small envelope bearing a single 12½c yellow green, perf 12x11¼ and tied by neat Montreal duplex grid cancellation, sent to London, England with red (FE 8) receiver cancel, VF **Est. 250.00+**

- 1207 ☉B #18a, 12½c Yellow Green, Perf 11¼** Used block of four, with grid cancellations, right stamps with faults, otherwise a rare used multiple of this early printing, Fine appearance, *ex. Reford* **Est. 300.00+**

- 1208 ☉ #18a, 12½c Deep Yellow Green, Perf 11¼** A choice used example, well centered with deep colour and concentric rings cancellation in blue, VF **175.00+**

To avoid disappointment be sure to mail your bid sheet early.



**1209 P B** #19, 17c Pale Blue Trial colour plate proof block of ten (Position 65-69 / 75-79) on card mounted india paper, couple soiling spots, otherwise a very scarce proof multiple, F-VF **Est. 1,500.00**



**1210 ★** #19, 17c Deep Blue, Perf 11 $\frac{3}{4}$  An impressive mint example, superbly centered with perforations clear of the design on all four sides, even sharp impression and unusually deep rich colour, tiny perf thin at upper left, mentioned for the record only, possessing large part original gum, XF OG **3,000.00**

AN EXTREMELY FINE MINT SEVENTEEN CENT JACQUES CARTIER, RANKING AMONG THE FINEST IN EXISTENCE.

**1211 ★** #19, 17c Blue, Perf 12x11 $\frac{3}{4}$  A handsome unused example, unusually fresh with deep rich colour and sharp impression, Fine+ *(Illustrated on Page 56)* **900.00**



**1212 ★ B** #20, 2c Deep Rose, Perf 12x11 $\frac{3}{4}$  An exceptional mint block of four, unusually well centered for this notoriously tough issue, with perforations well clear of the design on all four stamps, rare thus, deep rich colour and sharp impression, possessing large part original gum, XF OG, 1984 Greene Foundation cert. *ex. Bertram, E. Carey Fox* **8,000.00+**

WITHOUT ANY DOUBT THE FINEST MINT BLOCK OF FOUR IN EXISTENCE.  
A SUPERB SHOWPIECE.





1211



1213



1214



1215

- 1213 ★ **#20, 2c Rose, Perf 12x11¼** A superior mint example, very well centered with perforations clear of the design on all four sides, gorgeous colour and large part original gum. A great stamp, VF OG **2,000.00**
- 1214 ★ **#20, 2c Rose, Perf 12x11¼** Unused example, reasonably centered for the issue, nice colour, F-VF **700.00**
- 1215 ★ **#20iv, 2c Rose, Perf 12** Unused example showing almost full imprint in right margin, Fine **500.00**

### LARGE QUEEN



1216



1217

- 1216 ★ **#21, 1868 ½c Black on Vertical Wove Paper, Perf 12** An exceptional mint example, precisely centered and with gorgeous fresh colour, possessing full pristine original gum, never hinged. A premium quality stamp, XF NH **375.00+**
- 1217 ★ **#21civ, ½c Black on Thin Crisp Paper, Perf 12** Mathematically centered mint example, showing the "spur" in scroll left of "H", deep rich colour and possessing full original gum, lightly hinged. A superb stamp, XF LH **400.00+**



1218



1219

- 1218 P **#22, 1c Brown Red** Plate proof single printed on thick card, large margins and fresh, XF **Est. 750.00**
- 1219 ★ **#22, 1c Brown Red on Medium Wove Paper** A magnificent mint example, exceptionally well centered for this challenging stamp, unusually sharp impression and with gorgeous fresh colour, possessing large part original gum. An attractive stamp in superior quality, XF OG, 2004 Greene Foundation cert. **1,600.00+**



- 1220 ★ **#23, 1c Yellow Orange, Perf 12** A spectacular mint example, exceptionally well centered within its well balanced margins, incredible colour, much deeper than normally encountered, possessing large part original gum, somewhat disturbed. A superb stamp, worthy of the finest collections, XF OG, 1986 Greene Foundation cert. **4,000.00**



1221



1222

- 1221 ★ **#23, 1c Yellow Orange on Medium Wove Paper** A nice mint example with lovely fresh colour, relatively well centered for the issue, with part original gum, F-VF **2,800.00**
- 1222 ★ **#23a, 1869 1c Deep Orange (First Printing)** Attractive mint example with rich colour and possessing large part original gum, Fine+ OG **2,000.00**



1223



1224

- 1223 ★ **#24, 2c Green on Thinner Wove Paper** Nicely centered mint example with lovely fresh colour, sharp impression and possessing large part original gum. A great stamp, seldom encountered in such superior quality, VF OG, 1999 PSE cert. **Est. 2,000.00+**
- 1224 ★ **#24, 2c Green on Medium Wove Paper** A selected mint single with bright fresh colour, nicely centered and with large part original gum, VF OG **2,000.00**





- 1225 ★B #24, 24vii, 2c Green on Horizontal Wove Paper** An impressive mint block of four, nicely centered, gorgeous fresh colour and sharp impression, showing the rare and distinctive 'NEEDLE NOSE' variety on upper right stamp, tiny natural inclusion and truncated perfs on lower right stamp in no way detract from this very rare multiple, bottom pair is never hinged, VF **Est. 7,500.00+**

Provenance: Dale-Lichtenstein

THE FIRST 'NEEDLE NOSE' VARIETY WE HAVE SEEN IN MINT CONDITION. LIKELY UNIQUE IN A MINT BLOCK. A DESIRABLE SHOWPIECE IDEAL FOR THE CONNOISSEUR.



1226



1228



1230

- 1226 ☉ #24a, 1868 2c Green on Watermarked Bothwell Paper** Reasonably centered used example, showing portion of watermark " . BO / THA" letters, lightly cancelled, F-VF **360.00**



- 1227 ★ #24b, 1868 2c Deep Green on Thin Crisp Wove Paper** A beautiful and selected mint example, well centered with rich colour and possessing full original gum. Tough to find in premium condition, VF OG **2,400.00**
- 1228 ★ #24b, 1868 2c Grass Green on Thin Crisp Wove Paper** Reasonably centered unused example with nice colour, F-VF **850.00**



- 1229 ★B #24iv, 1868 2c Bluish Green on Bothwell Paper A remarkable mint block of four, sheet margin at left, relatively well centered and with bright fresh colour and sharp impression, possessing large part original gum, almost Very Fine centering, 2007 Greene Foundation cert. **7,200.00**

Provenance: Jarrett, Gill, Hewitt, Ferranti

A BEAUTIFUL MINT MULTIPLE OF THE TWO-CENT LARGE QUEEN ON BOTHWELL PAPER, IDEAL FOR EXHIBITION.

- 1230 ◎ #24iv, 2c Green on Bothwell Paper An attractive used example with Montreal (SP 20 69) duplex cancel, VF *(Illustrated on Page 58)* **175.00**



- 1231 ★ #25, 3c Red on Medium Wove Paper Remarkably well centered mint example, with gorgeous fresh colour and possessing full original gum, lightly hinged, a few shorter perfs, otherwise VF LH **5,000.00**



1232



1234



1235

- 1232 ◎ #25, 3c Red on Medium Wove Paper A wonderful used example, unusually sharp impression and fresh, centered within large margins and light grid cancellation, VF+ **Est. 100.00+**





- 1233 ☒ #25, 1869 (April 27) Orange envelope bearing pair of the 3c red Large Queen, showing small portion of the imprint in the unsevered portion of the sheet margin above left stamp, stamps neatly cancelled by two-ring '11' cancels from Fredericton, with clear dispatch, sent to USA with St. John transit backstamp. Very fresh and clean, VF+ **Est. 200.00+**
- 1234 ☉ #25b, 3c Red on Thin Wove Paper A pretty used example showing a select Belleville (MY 68) CDS postmark in BLUE, VF  
(Illustrated on Page 59) **Est. 100.00+**
- 1235 P #26, 5c Turquoise Trial colour plate proof single on thick soft white wove paper, pretty, VF  
(Illustrated on Page 59) **Est. 750.00**



- 1236 ★ #27, 1868 6c Dark Brown (Plate 1) on Medium Wove Paper Unusually well centered mint example with deep rich colour, sharp impression and possessing large part original gum. Very seldom encountered in such top-quality, XF OG **5,000.00**



1237



1238

- 1237 ★ #27v, 6c Brown (Plate 2) on Medium Wove Paper Horizontal mint pair, large part original gum with some disturbance and tiny adhesion on back of couple perforations on right stamp, negligible. One of the few known multiples of this shade, Fine OG, 2005 Greene Foundation cert. **3,600.00**
- 1238 ☉ #27vi, 6c Dark Brown (Plate 1) on Bothwell Paper A scarce and selected horizontal used pair, centered and lightly cancelled, VF and attractive, Bothwell paper is rarely seen on this value **650.00**



1239



1240

- 1239 ★ #28, 12½c Dull Blue on Horizontal Wove Paper An exceptionally well centered mint example, deep rich colour and possessing large part original gum, rarely seen in such nice quality, XF OG **Est. 2,800.00**
- 1240 ◎ #28v, 12½c Blue on Bothwell Paper Nicely centered used single with deep rich colour and unusual oval "Crown / CANADA" cancellation in black, VF **Est. 250.00**



1241



1242

- 1241 P #29, 15c Grey Violet Plate proof pair in colour of issue, showing large margins and portion of the adjacent stamp at right, printed on thick white card, very scarce, VF **Est. 2,000.00+**
- 1242 P #29, 15c Violet Plate proof single, printed on thick card, the key value, VF **Est. 1,000.00**



1243



1244

- 1243 ★ PB #29, 15c Grey Violet on Vertical Wove Paper, Perf 12 Bottom positional block of six, showing large portion of plate imprint at lower left, well centered with lovely colour and full original gum, all stamps are never hinged, trivial gum bend on top centre stamp. A scarce multiple, F-VF ex. *Greene* **1,500.00**
- 1244 ★B #29, 15c Grey Violet on Horizontal Wove Paper, Perf 12 Lovely fresh mint block of four, full original gum, lightly hinged at top leaving bottom pair never hinged, Fine **600.00**





1245



1246



1247

- 1245 ★ **#29a, 15c Greyish Purple on Horizontal Wove Paper, Perf 11½x12** A marvellous mint example of this rare stamp, nicely centered, deep rich colour and large part original gum. A great stamp in all respects, missing from most advanced collections, VF OG **4,000.00**

AMONG THE TOUGHEST FIFTEEN CENT LARGE QUEEN TO OBTAIN VERY FINE MINT WITH ORIGINAL GUM.

- 1246 ★ **#29b, 1868-1869 15c Red Lilac on Horizontal Wove Paper, Perf 12** Very well centered mint example of this scarce early printing with characteristic clear and sharp impression, rich colour and possessing large part original gum. A difficult stamp to obtain in such nice condition, VF OG **2,400.00**

- 1247 ★ **#29iv, 15c Purple on Medium Wove Paper, Perf 12** Lovely fresh mint example showing the Cracked Plate variety (Position 65), nice colour, trivial shorter perf and possessing large part original gum. A very scarce mint positional stamp, Fine OG **1,800.00**



1248



1249



1250

- 1248 ☉ **#30c, 1880 15c Deep Violet on Very Thick Stout White Paper, Perf 12** An attractive used example, unusually well centered for this distinctive and scarce printing, large margins, lovely colour and light cancellation, tiny negligible shallow thin, still much superior to most encountered, VF **1,650.00**
- 1249 ☉ **#30c, 15c Deep Violet on Very Thick Stout White Paper, Perf 12** Reasonably centered used example, with large margins and deep colour, light cork cancellation in black and showing foreign receiver datestamp in red at lower left corner, an appealing stamp, F-VF **1,650.00**
- 1250 ☉ **#30v, 15c Blue Grey on Vertical Wove Paper, Perf 12** Used example showing the Cracked Plate variety (Position 65) at left, faint corner crease at upper right corner, used with 1889 duplex cancellation, scarce, Fine+ **500.00**

Visit us online [www.easternauctions.com](http://www.easternauctions.com)

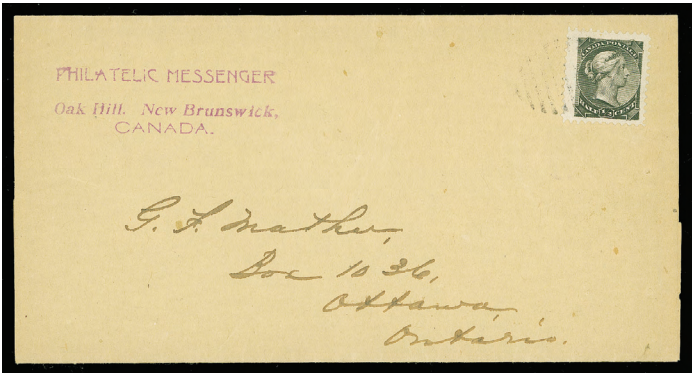
or

E-Mail us at [easternauctions@nb.aibn.com](mailto:easternauctions@nb.aibn.com)



- 1251 ☉ #33, 1868 3c Bright Red on Laid Paper An exceptionally well centered used example, brilliant colour, clear laid lines including "verge" line, minute toning spot, selected and light central Oshawa double arc datestamp. A great stamp, rarely encountered in such superior quality, VF **2,500.00**

SMALL QUEEN



1252



1255

- 1252 ☒ #34iv, Undated Philatelic Messenger, Oak Hill, New Brunswick handmade wrapper, franked with a selected and large margined Half-cent black Small Queen, Major Re-entry (Position 49, right pane) and lightly tied by oval grid cancellation, very scarce and choice, VF **Est. 500.00+**



- 1253 E #35, 36, 37, 1c, 2c & 3c Queen Victoria Set of three engraved plate essays on card mounted india paper, large margined and fresh, each denomination printed in the stamp issued colour, most attractive and scarce, VF **Est. 2,000.00**
- 1254 ★ #35d, 1c Orange (Montreal Printing), Perf 11½x12 Selected mint example, crisp impression and deep colour, possessing full streaky original gum, never hinged. Tough stamp to find, especially in such nice condition, VF NH *(Illustrated on Page 64)* **1,200.00**
- 1255 ★B #35i, 1888 1c Bright Yellow (Montreal Printing), Perf 12x12¼ Lovely fresh mint block of four, rich colour and possessing full original gum, lightly hinged, VF LH **400.00**





1254



1256

- 1256 ☉ **#35xi, 1c Yellow (Montreal), Perf 11½x12** Very lightly cancelled example showing the distinctive diagonal line in hair variety, tiny tear at top, scarce, VF appearance **500.00**



1257



1258

- 1257 ★ **#36a, 2c Deep Green (Montreal Printing) on White Wove Paper** Imperforate pair, ungummed as issued, large margins, VF+ **900.00**

- 1258 ★ **#36i, 2c Green (Ottawa Printing)** A stunning mint example, well centered within enormous margins, clear and sharp impression, showing lovely fresh colour and possessing full original gum that has been never hinged. A premium mint stamp, rarely encountered, VF+ NH JUMBO **Est. 500.00+**



1259



1260



1261

- 1259 ★ **#38, 5c Slate Green (Montreal Printing), Perf 12** A spectacular unused example, with exceptionally well centered within huge margins, clear impression and with lovely fresh colour, XF JUMBO **1,200.00+**

- 1260 ★ **#38i, 5c Deep Olive Green (Montreal Printing), Perf 12** A nice mint example with rich colour and deep impression, large part original gum, almost Very Fine centering **750.00**

- 1261 ★ **#39, 6c Light Yellow Brown, Perf 12** Exceptionally well centered mint example with lovely colour and large part original gum, XF OG **900.00**

- 1262 ☉ **#40a, 1880 10c Magenta (Montreal Printing), Perf 12** Selected used single, well centered, lovely deep colour and grid cancelled, VF+ *(Illustrated on website)* **100.00+**



1263



1264



1265

- 1263 ★ #40b, 1877 10c Deep Lilac (Montreal Printing), Perf 12 An attractive mint example, nicely centered with large part original gum, couple shorter perfs at left, otherwise a tough stamp, VF OG **1,500.00**
- 1264 ★ #40c, 1875-1876 10c Dull Rose Lilac (Montreal Printing), Perf 11½x12 Reasonably centered mint example, very fresh with brilliant colour and small part original gum, F-VF OG, 2007 Greene Foundation cert. **1,375.00**
- 1265 ★ #40c, 1874 10c Pale Milky Rose Lilac (Montreal Printing), Perf 11½x12 A stunning mint example, true colour of this delicate shade, very reasonably centered for the issue and possessing full original gum, faint hinge mark at top. A tough stamp to find, F-VF VLH **2,125.00**



1266



1267

- 1266 ★ #43, 6c Red Brown (Ottawa Printing), Perf 12 Very well centered and fresh mint horizontal pair, showing the wide and narrow perforation setting, full original gum, VF LH **500.00**
- 1267 ★ #44, 8c Violet Black (Ottawa Printing), Perf 12 Post office fresh mint example, nicely centered and with full immaculate original gum, never hinged. A nice stamp in choice condition, VF NH **1,100.00**



1268



1269

- 1268 ★ #45, 1897 10c Brown Red (Ottawa Printing), Perf 12 A selected mint example, with gorgeous deep colour and impression, possessing full original gum, never hinged, almost Very Fine centering **1,500.00**
- 1269 ★ #45a, 10c Deep Dull Rose (Ottawa Printing), Perf 12 A choice mint example, unusual deeper shade, nicely centered with large part original gum, hinge remnant, VF OG **750.00**





1270



1271

- 1270 ★ **#46, 1893 20c Vermilion** Very well centered mint single, lovely fresh colour and possessing full original gum, trivial gum tone spot, VF NH **2,400.00**
- 1271 ★ **#47, 1893 50c Deep Blue** Precisely centered mint horizontal pair, nice colour and full original gum, barely hinged at centre top, minute tone spot on gum on left stamp, VF+ VLH **1,200.00**

### 1897 DIAMOND JUBILEE

- 1272 P B **#50-54, 1897 1c-5c Diamond Jubilee** Short set of the low denominations in plate proof blocks of four, on card mounted india paper, VF *(Illustrated on website)* **1,160.00**



- 1273 P **#50-65, 1897 ½c-\$5.00 Diamond Jubilee Issue** A choice and complete set of sixteen plate proof pairs, all with sheet margin at foot, on card mounted india paper, lovely fresh colours and sharp impression. An attractive set of this popular issue, XF **Est. 7,500.00**



1274



1275

- 1274 ★ **#50, 1897 ½c Black** A gorgeous and post office fresh mint example, well centered with full pristine original gum, VF NH **450.00**

- 1275 ★♦ #52, XF (90) 1897 2c green a gorgeous fresh and well centered mint example with full unblemished original gum, never hinged. 2007 Sismondo cert. 90 XF *(Illustrated on Page 66)* **105.00+**



1276



1277

- 1276 ★ #54, 1897 5c Deep Blue Very well centered mint single with rich colour and full pristine original gum, VF NH **240.00**
- 1277 ★ #55, 1897 6c Yellow Brown Well centered mint example with deep rich colour and full original gum, VF LH **300.00**



- 1278 ★B #56, 1897 8c Dark Violet A spectacular mint block of four, exceptionally well centered, deep rich colour and possessing full unblemished original gum, never hinged. Rarely encountered multiple in such superior quality, XF NH **1,800.00**



- 1279 ★B #57, 1897 10c Brown Violet A premium mint block of four, nicely centered, gorgeous fresh colour and full unblemished original gum, VF NH **1,800.00**





- 1280 ★** #59-65, 1897 20c-\$5 **Diamond Jubilee** Complete set of seven with SPECIMEN handstamp overprint, deep rich colours; 20c and 50c are unused (no gum), other values with large part original gum. A very scarce set, F-VF **3,900.00**



- 1281 ★♦** #59, **GEM (100)** 1897 20c vermilion Queen Victoria Diamond Jubilee, a superlative mint example, mathematically centered with unusually deep rich colour and sharp impression for the issue on bright fresh paper, possessing full pristine original gum, never hinged. A wonderful stamp, which was awarded the highest grade, a must for the most demanding collector. 2007 Sismondo cert. 100 GEM **1,200.00+**



- 1282 ★ PB** #59, 1897 59iii, 20c **Vermilion** Plate No. 1 strip of three, centered with lovely fresh colour, Re-entry (Position 5) in Crown and "P" of "POSTAGE" on left stamp, margin reduced at top, perf separation, otherwise with full original gum, right pair is never hinged. A nice plate multiple, VF **3,150.00**
- 1283 ★** #59ii, 1897 20c **Vermilion** A reasonably centered mint single showing the "W-E" plate variety (Position 15), F-VF OG *(Illustrated on Page 69)* **650.00**
- 1284 ★** #60, 1897 50c **Ultramarine** Exceptionally well centered mint example with large margins, lovely fresh colour and possessing full original gum, faint fingerprint on gum, never hinged, VF *(Illustrated on Page 69)* **1,500.00**
- 1285 ★** #61, 1897 \$1 **Lake** A marvelous mint example, well centered within large margins, gorgeous fresh colour and possessing large part original gum, VF OG, 2007 Greene Foundation cert. *(Illustrated on Page 69)* **1,200.00**



1283



1284



1285



1286



1287

- 1286 ★ #61, 1897 \$1 Lake Reasonably centered mint example with large margins, lovely fresh colour and full original gum, small hinge remnant, F-VF OG **900.00**
- 1287 ◎ #61, 1897 \$1 Lake A choice used single, nicely centered and fresh colour, cancelled by light Toronto split ring cancellation, VF, 2007 Greene Foundation cert. **1,000.00**



1288



1289

- 1288 ★ #62, 1897 \$2 Dark Purple Mint example possessing full original gum, never hinged, with Georg Buhler guarantee handstamp on back, Fine NH **2,200.00**
- 1289 ★ #62, 1897 \$2 Dark Purple Remarkable mint example, incredible fresh rich colour seldom seen on this value, reasonably well centered and possessing full original gum, lightly hinged, F-VF LH **1,450.00**



1290



1291

- 1290 ◎ #63, 1897 \$3 Yellow Bistre Very well centered used example within unusually large margins, deep rich colour, postally used with clear Montreal roller cancellation, VF+ **1,500.00**
- 1291 ◎ #63, 1897 \$3 Yellow Bistre Neatly cancelled example, centered at top, showing centrally struck Toronto "11 AM" (MR 26 98) squared circle cancellation, unusual, VG-Fine **750.00**





- 1292 ★ #64, 1897 \$4 Purple** Well centered mint example within large margins, unusually deep rich colour and impression, possessing full original gum, minor corner gum bend at lower right, never hinged and difficult to obtain in such quality, VF NH **6,000.00**

### 1897-1898 QUEEN VICTORIA "LEAF" AND 1898-1902 "NUMERAL" ISSUES



- 1293 P #66-73, 1897-1898 1c-10c Queen Victoria "Leaf" Issue** Selected complete set of eight plate proof singles, on card mounted india paper, all with large margins, VF **Est. 1,500.00**



1294



1295

- 1294 P B #66, ½c Black Queen Victoria "Leaf"** Positional plate proof block of nine showing the Major Re-entry (Position 1R79) on centre stamp, on card mounted india paper, most appealing, VF **Est. 1,000.00+**
- 1295 P B #67, 1c Blue Green Queen Victoria "Leaf"** Positional plate proof block of six, showing Major Re-entry in "CANADA" (Position 3L89) on left centre stamp, on card mounted india paper, attractive, VF **Est. 750.00**

**1296 ★ #68, 1897 2c Purple Queen Victoria "Leaf"** Top Plate No. 4 block of eight, deep rich colour and with full pristine original gum, Fine+ NH *(Illustrated on website)* **Est. 350.00+**



1297



1298



1299



1300

**1297 ★ #68, 1897 2c Purple Queen Victoria "Leaf"** Post office fresh mint example, well centered, rich colour and with full original gum, VF+ NH **180.00+**

**1298 ★ #69, 1898 3c Carmine Queen Victoria "Leaf"** A beautiful mint example with fresh colour, well centered within large margins, full original gum, tiny (negligible) natural inclusion in left margin, otherwise XF NH **270.00**

**1299 ★ #71, 1897 6c Brown Queen Victoria "Leaf"** Precisely centered mint example with deep colour and impression, possessing full original gum, choice, XF NH, 1993 Greene Foundation cert. **525.00**

**1300 ★ #72, 1897 8c Orange Queen Victoria "Leaf"** Centered and fresh mint example on vertical wove paper, with deep rich colour and full pristine original gum, tough to find in choice condition, VF NH **1,050.00**



**1301 ★ #73, 1897 10c Brown Violet Queen Victoria "Leaf"** Mint single on vertical wove paper, nicely centered, deep rich colour and with full pristine original gum. A tough stamp to find, VF NH **2,250.00**



1302



1303

**1302 ★ #74v, 1898 ½c Black Queen Victoria "Numeral"** Imperforate pair on vertical wove paper, un gummed as issued, large even margins, XF **500.00**

**1303 ★ #75vi, 1898 1c Green Queen Victoria "Numeral"** Imperforate pair on vertical wove paper, fresh with large even margins, un gummed as issued, XF **900.00**





1304



1307

- 1304 ★♦ #76, SUPERB 98** 1898 2c purple Queen Victoria "Numeral", an exceptionally well centered mint example, with balanced margins, post office fresh colour and with full pristine original gum, never hinged. 2007 Sismondo cert. 98 SUPERB **180.00+**



1305



1308

- 1305 ★ #77d, 1899 2c Carmine, Die II Queen Victoria "Numeral"** Imperforate pair on vertical wove paper, deep colour, full margins, tiny natural paper inclusion, VF and scarce **2,500.00**



- 1306 P #78, 3c Carmine Queen Victoria "Numeral"** Large Die Proof printed in colour of issue on wove paper, 57 x 80mm, showing die sinkage on two sides, die "F-113" number and imprint below, rare showpiece, VF **Est. 1,500.00+**

### 1899 QUEEN VICTORIA "NUMERAL" ISSUE

- 1307 ★ #79, 5c Blue on Bluish Paper** A choice mint example, well centered and with rich colour, full unblemished original gum, seldom seen so nice, VF NH **900.00**
- 1308 ★ #79ii, 1899 5c Blue Queen Victoria "Numeral"** Imperforate pair on bluish horizontal wove paper, full margins and fresh, ungummed as issued, XF **900.00**



1309



1311

- 1309 ★ #82ii, 1898 8c Orange Queen Victoria "Numeral" Imperforate pair on vertical wove paper, full margins, lovely fresh colour, un gummed as issued, XF **900.00**



1310



1312

- 1310 ★ #83, 1898 10c Brown Violet Queen Victoria "Numeral" Exceptionally well centered mint example with gorgeous fresh colour and full original gum, VF+ LH **650.00**
- 1311 ★ #83ii, 1898 10c Brown Violet Queen Victoria "Numeral" Imperforate pair on horizontal wove paper, un gummed as issued, fresh colour, XF and scarce **1,250.00**
- 1312 ★ #83var., 1898 10c Brown Violet Queen Victoria "Numeral" A beautiful mint example, well centered with unusual pastel-like shade, fresh and quite striking, full original gum, VF+ OG **650.00**



1313



1314

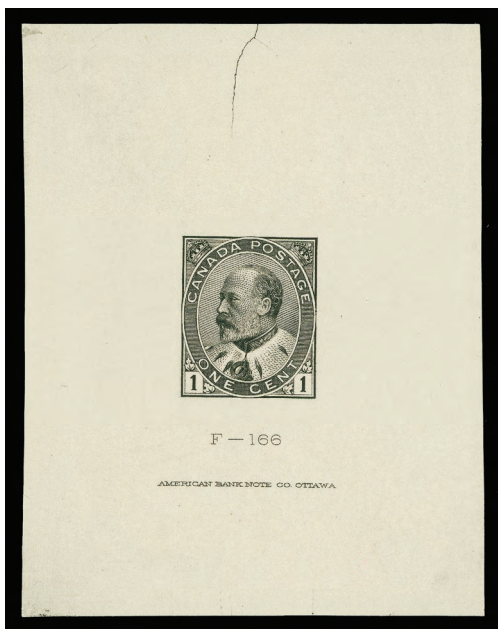
- 1313 ★ #86, 1898 2c Black, Blue & Carmine Map A lovely mint example, well centered within huge margins, VF NH JUMBO **150.00**
- 1314 ★♦ #87, XF-SUPERB (95) 1899 2c on 3c carmine Queen Victoria "Leaf" Provisional surcharge, a choice and very well centered mint example, gorgeous fresh colour and possessing full unblemished original gum, never hinged. 2007 Sismondo cert. 95 XF-SUPERB **75.00+**

Have you been thinking of selling your collection?  
Call us 1(800) 667-8267 ask for Gary J. Lyon.  
Give your collection the attention it deserves.  
Consign your stamps to Eastern Auctions Ltd.

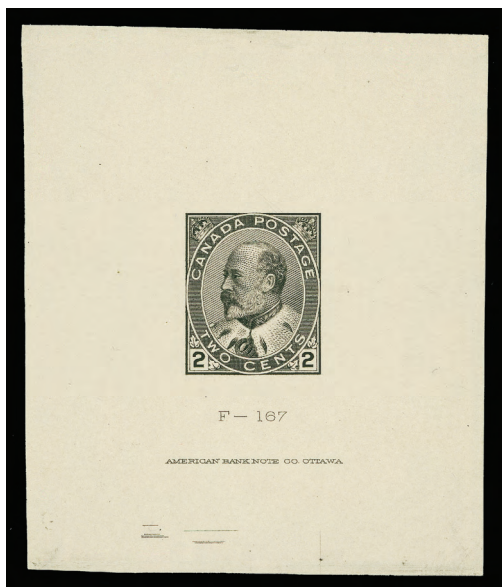




## 1903 – 1908 KING EDWARD VII



1315



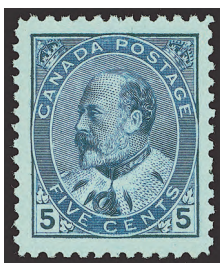
1316

- 1315 P** #89, 1c Black King Edward VII Large Trial Colour Die Proof printed on card mounted india paper, 60 x 78mm, showing printing plate crack at centre top, die "F-166" number and printer's imprint at foot. An attractive and very rare proof, ideal for exhibition, VF **Est. 3,000.00+**

- 1316 P** #90, 2c Black King Edward VII Large Trial Colour Die Proof printed on card mounted india paper, 60 x 72mm, showing unusual printer's horizontal guidelines at foot, die "F-167" number and printer's imprint at foot. A very rare proof, ideal for exhibition, VF **Est. 3,000.00+**



- 1317 ★** #90var., 1903 2c Carmine King Edward VII, Type II A striking horizontal pair, sheet margin at right with design shifted (15mm to right), light hinge mark on one stamp only, highly unusual and most appealing variety. **Est. 250.00+**



- 1318 ★** #91, 5c Blue on Bluish Paper An exceptional mint example, well centered within large margins, lovely rich colour and sharp impression, possessing full immaculate original gum, never hinged. A premium stamp for the meticulous collector, XF NH **900.00+**



1319



1320

- 1319 ★ #92a, 1903 7c Olive Bistre Imperforate pair with balanced large margins, lovely fresh colour and ungummed as issued, choice, XF **1,000.00+**
- 1320 ★B #92iii, 7c Straw King Edward VII A gorgeous fresh mint block of four, crisp impression and reasonably centered with full original gum, lower pair is never hinged, F-VF OG **1,560.00**



1321



1322

- 1321 ★ #93, 1903 10c Brown Lilac A gorgeous fresh mint example with crisp impression and possessing full pristine original gum, never hinged, F-VF NH **1,175.00**
- 1322 ★ #93a, 1903 10c Brown Lilac King Edward VII A choice imperforate pair, sheet margin at right and large margins on other sides, fresh and ungummed as issued, XF **1,500.00**



- 1323 ★ PB #94, 20c Olive Green A rare Plate No. 1 strip of three with lovely fresh colour, trivial perf separation in sheet margin only, possessing full original gum, lightly hinged on centre stamp, left and right stamps never hinged. Catalogue valuation is for singles only, F-VF **4,500.00**





1324



1325



1327

- 1324 ★ #94, 1904 20c Olive Green Precisely centered mint example with rich colour and sharp impression, choice, VF+ OG **1,000.00**

- 1325 ★ #94, 1904 20c Olive Green King Edward VII Large margined and centered mint example with rich colour and full original gum, VF LH **1,000.00**



- 1326 ★ PB #95, 50c Purple A rare and desirable Plate No. 1 strip of three, quite well centered within large margins, naturally short-gummed at top, otherwise left and right stamp have full original gum, never hinged, centre stamp is lightly hinged. Catalogue valuation is for singles only, F-VF **5,375.00**

- 1327 ★ #95, 1908 50c Purple An exceptionally well centered mint example, gorgeous fresh colour and sharp impression, full original gum, very lightly hinged. A great stamp, XF VLH **1,250.00**

### 1908 QUÉBEC TRICENTENARY



- 1328 ★B #97var., 1908 1c Green A stunning "block", misperforated horizontally and vertically (slanting), horizontal fold, otherwise very scarce and a neat item for the specialist, VF OG **Est. 400.00+**



1329



1330

- 1329 ★ #99, 1908 5c Blue Very fresh and centered mint example with large margins and full unblemished original gum, VF NH **300.00**
- 1330 ★ #99, 1908 5c Blue A choice mint example, well centered and fresh, with full original gum, negligible natural gum inclusion, VF NH **300.00**



- 1331 ★ #100, 1908 7c Olive Green Post office fresh and well centered mint example, sharp impression and possessing full immaculate original gum, never hinged. A top-quality stamp, seldom seen so nice, XF NH **600.00+**



- 1332 P #101, 10c Violet Large Die Proof in colour of issue on india paper, 76 x 64mm, die sunk on card, 93 x 82mm, with the "F-195" number and imprint below, very scarce, VF **Est. 1,000.00+**





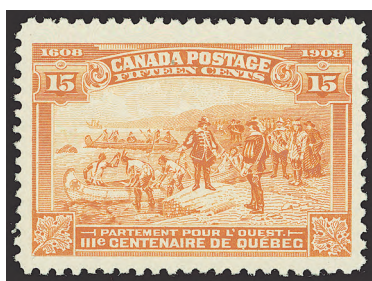
1333



1334

- 1333 ★ #101, 1908 10c Violet An exceptionally well centered mint example, with balanced large margins, fresh and possessing full immaculate original gum. A superb stamp for the perfectionist, XF NH GEM **750.00+**

- 1334 ★ #101, 1908 10c Violet Post office fresh and nicely centered mint example with full immaculate original gum, VF NH **750.00**



1335



1336

- 1335 ★ #102, 1908 15c Orange A lovely fresh mint example, well centered within large margins, tiny natural paper inclusion, negligible, full clean original gum, never hinged, VF+ NH **900.00**

- 1336 ★ #103, 1908 20c Brown A selected mint example, nicely centered, lovely fresh colour and full original gum, VF NH **1,050.00**

### 1911 – 1925 KING GEORGE V “ADMIRAL” ISSUE



- 1337 ★ #106x, 2c Deep Rose Red Admiral Experimental coil strip of four, backstamp Type A over paste-up, well centered for this scarce coil issue, full original gum, lightly hinged, VF **500.00**



-X1338-



-1339-



- 1338 ○ #106xv, 2c Carmine (shades) Interesting and useful study lot of six used singles showing different Major Re-entries. Includes two examples (unknown positions) one with light toning; Position 6UL68 (light wrinkle); Position 6UL39 (thin); Ralph Trimble No. 28; and Position 5UL79, Fine or better **Est. 600.00+**

- 1339 ☉ #106xv, 2c Dark Carmine Used example showing Major Re-entry (Ralph Trimble No. 13) prominent in "CAN" and also inside oval and outside frameline, left of "CANADA", attractive, F-VF  
(Illustrated on Page 78) Est. 250.00+



-1340-



-1341-



- 1340 ☉ #106xv, 2c Carmine Reasonably centered used single, wavy-line cancel, showing Major Re-entry (Position 106LR92; illustrated in Marler Figure II.65 p. 266) quite distinctive in "CAN" of "CANADA", a few (negligible) nibbed perfs at foot, F-VF Est. 250.00+
- 1341 ☉ #106xv, 2c Carmine Used single with Major Re-entry (Ralph Trimble No. 11) prominent in "CAN" and in "GE" letters, appealing, Fine Est. 250.00+



-1342-



-1343-



- 1342 ☉ #106xv, 2c Carmine Used example with Major Re-entry (Position 137LL77; illustrated in Unitrade and in Marler Figure II.79 p. 274), well pronounced in "CAN", "GE" and inside oval at left of "CANADA", light crease, otherwise Fine appearance and most appealing Est. 250.00+
- 1343 ☉ #106xv, 2c Rose Carmine Used example with Major Re-entry (Position 6UL14; illustrated in Marler Figure II.10 p. 229), prominent in "CA" and in "E" of "POSTAGE", also inside oval below "CA" of "CANADA", attractive, Fine+ Est. 250.00+



- 1344 B E #109, 3c Eckerlin "Admiral" Proofs Complete set of four reversed sample proof blocks of four, achieved by "Rotary Intaglio Process" in orange red, green, black and deep blue, printed on thick card paper, rare and attractive, VF Est. 2,500.00





- 1345 ★ PB** #109, 3c Dark Carmine, Die I (Dry Printing) Plate A122 block of eight, unusual deeper shade, reasonably centered with lower row never hinged, F-VF *(Illustrated on website)* **Est. 250.00+**



- 1346 ★ PB** #111, 5c Dark Blue (Wet Printing) A beautiful top Plate A14 pair, well centered mint with full original gum, stamps are never hinged, hinged in selvedge only, choice, VF, *ex. Lindemann* **1,200.00+**
- 1347 ★** #111, 5c Bright Blue (Wet Printing) An attractive fresh and centered mint single with full original gum, VF NH **600.00**
- 1348 ★** #111, 5c Bright Blue (Wet Printing) Nicely centered mint example with gorgeous colour and full original gum, VF NH **600.00**



- 1349 ★♦** #111, GEM (100) 1914 5c dark blue Admiral (wet printing), a mathematically centered mint example, within unusually large margins, rich colour with sharp impression, possessing full original gum, lightly hinged. A great stamp, which was awarded the lofty and highest grade obtainable, ideal for the perfectionist. 2008 Sismondo cert. 100 GEM **200.00+**
- 1350 ★** #111a, 5c Indigo (First Printing) A most attractive mint example of this elusive stamp, showing plate "1" and portion of printing order number in top sheet margin, quite well centered for the issue, large margins and possessing full pristine original gum, never hinged. A difficult stamp to find in such top-quality, VF+ NH GEM **Est. 1,000.00+**
- 1351 ★** #113, 7c Yellow Ochre (Wet Printing) An exceptional mint example, well centered within remarkable large margins, lovely fresh colour and full original gum. A great stamp in top-quality, XF NH GEM *(Illustrated on Page 81)* **210.00+**
- 1352 ★ PB** #113a, 7c Olive Bistre (Wet Printing) Precisely centered mint block of four, with Plate 3 inscription in bottom sheet margin, deep colour and with full original gum, tiny inclusion on upper right stamp, lightly hinged at top leaving bottom pair never hinged, VF *(Illustrated on Page 81)* **560.00+**
- 1353 ★B** #116, 10c Plum (Wet Printing) Post office fresh mint block of four, full original gum, three stamps are never hinged, light hinge mark on upper right stamp, almost Very Fine centering *(Illustrated on Page 81)* **2,420.00**



1352



1353



1356



1351



1354



1355

- 1354 ★ #117, 10c Blue (Wet Printing) Well centered mint single, Type D lathework, full original gum, VF LH **300.00**
- 1355 ★ #119, 20c Olive Green (Dry Printing) Nicely centered and gorgeous fresh mint example with full pristine original gum, VF NH **450.00**
- 1356 ★B #119iv, 20c Olive Green, Redrawn Frameline (Dry Printing) Well centered and fresh mint block of four, possessing full original gum, hinged only on upper left stamp leaving three stamps never hinged, VF **1,500.00**



- 1357 P #120, 50c Black Brown (Re-engraved) Large Die Proof printed on india paper, 55 x 59mm, die sunk on large card, 88 x 89mm, showing die "F-219" number and imprint below, a very scarce and desirable proof for the advanced collector, XF, ex. *Sir Gawaine Baillie* **Est. 2,000.00+**





1358



1359

- 1358 ★B #122, 1923 \$1 Orange (Dry Printing) Fresh mint block of four showing full Type D lathework, full original gum, never hinged, trivial perf separation at foot, negligible for this scarce and undervalued lathework multiple, VF NH **1,500.00+**
- 1359 ★B #122, \$1 Orange (Dry Printing) Centered mint block of four, showing part of the Pyramid Guidelines in left sheet margin, lower left stamp is never hinged, others VF LH **900.00**



- 1360 ★ #122, \$1 Orange (Dry Printing) Selected fresh mint example, very well centered within large margins, full original gum, VF NH **450.00**



1361



1363

- 1361 ★ #125ii, 1912 1c Blue Green, Perf 8 Vertically Selected coil strip of four, unusually well centered for the issue, lovely fresh colour and with full original gum. Difficult to find, especially in top-quality, XF NH **500.00+**



1362



1364

- 1362 ★B #126c, 1924 1c Yellow, Die I (Wet Printing) Part Perforate Coil (Sheet Form) Well centered mint block of four, deep colour, hinge remnant at centre top, scarce, VF OG **600.00**
- 1363 ★ #127, 1912 2c Carmine, Perf 8 Vertically Centered and fresh mint coil strip of four, seldom seen, VF NH *(Illustrated on Page 82)* **600.00**
- 1364 ★ #128a, 1924 2c Green (Wet Printing) Part Perforate Coil (Sheet Form) Pair with deep colour and full original gum, F-VF NH **465.00**



X1365



X1366

- 1365 ★B #136-138, 1924 1c, 2c & 3c Admiral Imperforate Issue Lovely fresh mint set of three in blocks of four, large margins, VF NH **1,000.00**
- 1366 ★ #136-138, 1924 1c, 2c & 3c Admiral Imperforate Issue Mint set of three in pairs, VF NH **500.00**



- 1367 ★ #136, 1924 1c Yellow, Die I (Wet Printing) Imperforate Upper Right Plate A179 strip of twenty stamps, full original gum, light hinge marks in top margin only, stamps NH, VF **2,000.00**





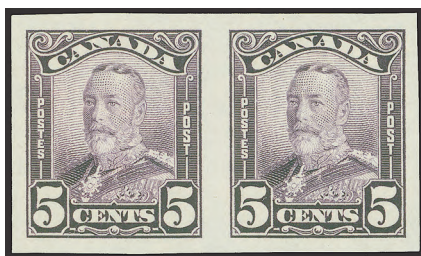
- 1368 ★B** #139i, 1926 2c on 3c Carmine (Dry Printing), Die I One-Line Surcharge, dramatically shifted and slanted, stunning mint block of four, showing full Type D lathework, well centered, post office fresh colour and crisp impression, with full original gum, never hinged, minor gum creases on lower right stamp, each stamp bearing "KB" (K. Bileski) guarantee handstamp on back, VF NH **5,000.00+**

A VERY RARE LATHEWORK MULTIPLE. ONE OF THE KEY LATHEWORK MULTIPLES TO OBTAIN, WHICH RARELY SURFACES ON THE MARKET.

### 1928 – 1929 KING GEORGE V "SCROLL" ISSUE



- 1369 P** #149-159, 1928-1929 1c-\$1 King George V "Scroll" Issue Attractive complete set of eleven plate proof singles in colours of issue on ribbed india paper, all with large margins, VF **Est. 2,000.00**



- 1370 ★** #149b-154a, 1928-1929 1c-8c King George V "Scroll" Issue Set of the six lower denominations, all in imperforate pairs, with fresh colours and full original gum, VF NH **1,235.00**

- 1371 ★B** #151b, 1928 3c Dark Carmine Well centered mint block of four, imperforate vertically, showing portion of plate inscription in top sheet margin, stamps are never hinged, VF

*(Illustrated on website)* **450.00**



1372

1372 ★B #156a, 1929 12c Grey Imperforate mint block of four, hinge remnant at centre top, bottom pair is lightly hinged, seldom seen multiple, VF OG **500.00**



1373

1373 ★B #157a, 1929 20c Dark Carmine Imperforate mint block of four, hinge remnant at centre top, lightly hinged on bottom pair, a scarce multiple, VF OG **500.00**



1374

1374 ★ PB #158, 1929 50c Bluenose Top Plate A2 block of four, fresh with full original gum, light hinge marks on top pair and in selvedge, leaving bottom pair never hinged, almost Very Fine centering **2,000.00**



1375

1375 ★ PB #158, 1929 50c Bluenose Lovely fresh Upper Left Plate A3 block of four, full original gum, never hinged, F-VF **Est. 2,000.00**



1376 ★B #158, 1929 50c Bluenose An attractive post office fresh and well centered mint block of four, possessing full pristine original gum, never hinged. A choice multiple, VF NH **2,800.00**





1377



1378



1379

- 1377 ★ #158, 1929 50c **Blueenose** Fresh and well centered mint single with full original gum, VF NH 700.00
- 1378 ★ #176, 1930 50c **Dull Blue Grand Pre** Exceptionally well centered mint example with fresh colour and full pristine original gum, VF+ NH 600.00
- 1379 ★ #177, 1930 \$1 **Mt. Edith Cavell** Precisely centered mint example with large margins, lovely fresh colour and full original gum, XF NH 600.00
- 1380 ★ #181iii, 182iii, 1930 2c **Deep Red** & 1931 **Dark Brown** Nicely centered line coil strips of four, both showing "Cockeyed King" variety on second stamp, VF NH, scarce this nice  
(Illustrated on website) 690.00



1381



1382

- 1381 ★B #191ii, 3c on 2c **Deep Red, Die 1** Fresh mint block of four, with surcharge noticeably shifted, top pair lightly hinged, leaving bottom pair never hinged, scarce multiple, F-VF 600.00
- 1382 ★ #208i, 1934 3c **Jacques Cartier** Top sheet margin pair, showing the "Burr on Shoulder" plate variety (Position 2, Plate 2 Right), well centered, fresh with full original gum, lightly hinged in selvage only, VF NH 300.00
- 1383 ★ #208iv, 1934 3c **Jacques Cartier** Horizontal strip of four showing the wide gutter spacing between, trivial short perf at left, unusually well centered, fresh, VF VLH  
(Illustrated on website) 400.00



1384 ★ #208iv, 1934 3c Jacques Cartier Wide gutter margin horizontal strip of four, VF LH 400.00



1385 P #211-216, 1935 1c-13c Silver Jubilee Issue Complete set of five horizontal plate proof pairs with vertical gutter margins between. The 13c does not exist as a vertical gutter margin pair, but is represented by a normal plate proof pair, all on card mounted india paper, choice and scarce, VF.  
*ex. Sir Gawaine Baillie* Est. 1,500.00+

1386 ★B #211i, 1935 1c Green, Princess Elizabeth Upper left corner block of six (2x3), showing the "Weeping Princess" plate variety (Plate 1 UR, Position 21), F-VF NH (Illustrated on website) 240.00



1387 P #217-227, 1935 1c-\$1 King George V "Pictorial" Issue An attractive and complete set of eleven plate proof singles, on card mounted india paper, choice, XF Est. 1,500.00

1388 ★ #217-227, 1935 1c-\$1 King George V "Pictorial" Issue Fresh and complete mint set of eleven, centered, one dollar is the pale blue shade, VF NH (Illustrated on Page 88) 320.00





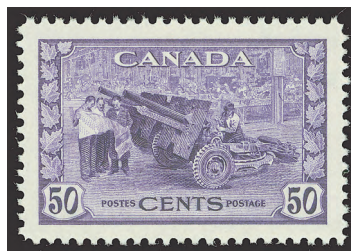
- 1389 ★** #227i, 1935 \$1 Pale Blue Shade Champlain Statue Upper Plate No. 1 block of six, choice and well centered, full original gum, scarce, VF NH **1,050.00**



X1388



X1390



1393

- 1390 ★** #241-245, 241a, 1938 10c-\$1 Pictorial Issue Post office fresh mint set of five, includes 10c carmine rose shade, choice VF NH **375.00**



- 1391 P** #246-248, 1939 1c, 2c & 3c Royal Visit Large Die Proof set of three, all in colours of issue on india paper, die sunk on full size card (227 x 152mm), with die number and imprint below. Rare with only a few sets known, VF **Est. 3,500.00**

- 1392 ★** #249-262, 1942-1943 1c-\$1 King George VI War Issue Complete and fresh mint set of fourteen, all centered and with full original gum, VF NH **300.00**  
(Illustrated on website)

- 1393 ★♦ #261, SUPERB (98)** 1942 50c violet Munitions, exceptional mint example with near-perfect centering, lovely fresh colour and with full pristine original gum, never hinged. A great stamp for the perfectionist. 2007 Sismondo cert. 98 SUPERB *(Illustrated on Page 88)* **75.00+**

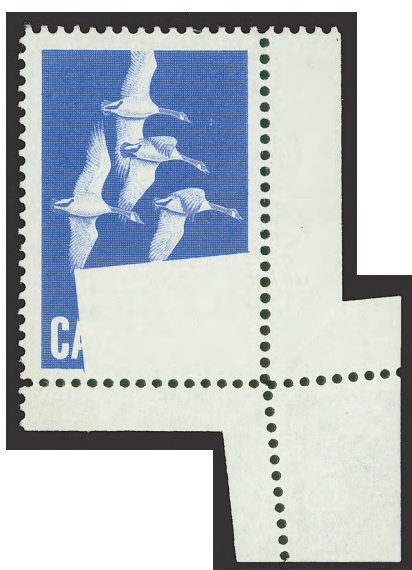


1394



X1395

- 1394 P #293, 1950 5c Deep Blue King George VI, "POSTES-POSTAGE" Omitted** Large Die Proof in issued colour on card mounted india paper, 72 x 71mm, showing die "XG 881" (albino print) number above and reverse signature of John Hay below, scarce, VF **Est. 750.00**
- 1395 E 1955 4c Indian Head Essay** Unissued proposed design in red, beige, black and fawn, matched set of corner blocks of four, on gummed stamp paper. This stamp was never approved, perhaps due to the high cost of having a multicolour process involved. Very scarce and among the most eye-appealing Canadian essays, VF NH **Est. 2,500.00**
- 1396 ★B #397var., 1962 5c Red River Settlement** Upper right sheet corner block of nine with a pre-printing paper fold through middle row. Also 1983 32c University Games block of four with neat vertical pre-printing fold through right pair. An unusual duo, F-VF NH *(Illustrated on website)* **Est. 120.00+**



- 1397 ★ #415var., 1963 15c Canada Geese** A remarkable lower right sheet corner example, showing a Major fold-over, and as a result a good portion of the stamp design is missing, some minor gum disturbance at top, negligible. Listed (unpriced) in R. Harris handbook. A desirable and appealing error for the specialist, VF OG **Est. 500.00+**





## 1967 - 1973 CENTENNIAL



1398



1400

- 1398 ★B #454iii + var., 1971 1c Brown, LF, PVA Mint block of four showing nice pre-printing paper fold on right pair and with vertical perforations shifted (3mm to right), striking, VF NH **Est. 200.00**



- 1399 ★B #455xx, 2c Green, Precancelled, DF, DEX Matched set of corner blocks of four, seldom seen, VF NH **720.00+**

- 1400 ★B #460fpII + var., 1972 6c Black, Die Ia, LF, PVA, tagged GT2, Perf 12 Mint block of four with impressive perforation shift (2mm to right and 7mm down), AN unusual multiple for the specialist, NH **Est. 250.00+**



- 1401 ★ #463iii + var., 1972 15c Dull Purple on Fluorescent Paper, PVA A most eye-appealing pre-perforating paper fold-over error showing good portion of adjacent stamp at right, VF NH **Est. 500.00**



- 1402 ★ **#463v + var., 1972 15c Dull Purple Centennial, LF paper, PVA Lower left PLATE NO. 1 BLOCK OF FOUR**, well centered with full original gum. A rare plate number error, since the issue on PVA gum came from Plate No. 3. Only five blocks are reported of this key Centennial Issue item, VF NH  
**Est. 1,500.00+**



1403



1404

- 1403 ★ **#503a, 1969 (6c) Christmas - Children Praying** Mint single with black colour omitted, a striking and desirable missing colour error, choice VF NH, 1981 RPS cert. **3,000.00**
- 1404 ◎ **#503a, 1969 (6c) Christmas - Children Praying** A remarkable used example with missing black colour error, minute wrinkle at lower left corner mentioned for strict accuracy, VF, rarely seen used **2,250.00**



1405



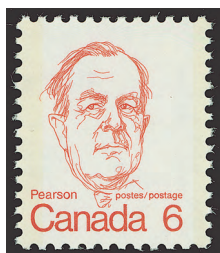
1406

- 1405 ★ **#549a, 1971 7c Emerald Green, HB, DEX Imperforate coil pair**, very scarce, F-VF NH, very scarce **1,500.00**
- 1406 ★ **#550a, 1971 8c Slate, Fluorescent Paper, PVA Imperforate coil pair** with large even margins, very scarce, VF NH **750.00**





## ELIZABETHAN MODERN ERRORS & VARIETIES



1407



1411



1414

**1407 ★ #591a, 1973 6c Lester B. Pearson** Mint single, tagged and printed on the gum side, VF NH **250.00**

**1408 ★ #591a, 1973 6c Lester B. Pearson** Mint single, tagged and printed on the gum side, VF NH  
(Illustrated on website) **250.00**



1409



1410

**1409 ★B #614a, 1973 15c R.C.M.P. Musical Ride** Imperforate upper left (blank) corner block of four, pristine condition, scarce thus, VF NH **1,500.00**

**1410 ★B #701i, 1976 10c Inland Vessels** Se-tenant block of four, couple faint pre-printing paper folds on left stamps, upper left stamp showing the "Canada 10" purple double print error, scarce, VF NH **350.00**

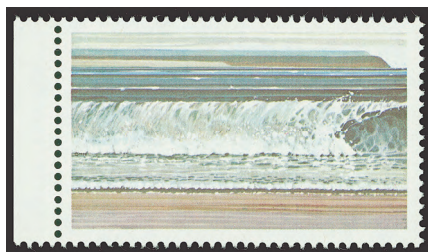
**1411 ★ #714a, 1977 12c Blue Parliament** Mint single, tagged and printed on the gum side, VF NH **400.00**

**1412 ★ #714a, 1977 12c Blue Parliament** Mint single, tagged and printed on the gum side, VF NH  
(Illustrated on website) **400.00**

**1413 ★B #715var., 1978 14c Red Parliament** Mint block of eight (2x4) showing a prominent vertical ink smear on six stamps, VF NH  
(Illustrated on website) **Est. 200.00**

**1414 ★ #715var., 1978 (14c) Red Parliament** Right sheet margin single, dramatically misperforated without denomination, trivial mark on gum, a most appealing stamp, VF NH **Est. 150.00+**

**1415 ★ #726a + var., 1979 \$1 Fundy National Park** Left margin vertical pair, showing a large unprinted (litho.) area caused by a repellax error, highly unusual, VF NH (Illustrated on page 93) **Est. 300.00+**



**1416 ★ #726b, 1981 (\$1) Fundy National Park** Centered mint example, untagged, with black (engraved) inscriptions omitted, VF NH **1,000.00**



1415



1417



1418

- 1417 ★ #726var., 1979 \$1 Fundy National Park Tagged mint single, showing a prominent black inscriptions shift (3mm to left and 3mm down), also shows a second albino impression, VF NH **Est. 250.00**
- 1418 ★ #726var., 1979 \$1 Fundy National Park Mint single, tagged, showing major vertical perforation shift (6mm to left) resulting in the black inscriptions being shifted to left as well, interesting and appealing, VF NH **Est. 200.00+**



- 1419 ★ #727a, 1979 (\$2) Kluane National Park Horizontal mint pair, sheet margin at left, with silver inscriptions omitted, also shows double embossing error, well centered and scarce, VF NH **1,500.00**



- 1420 ★ #727a, 1979 (\$2) Kluane National Park Mint single with silver inscription omitted, without embossing, F-VF NH **750.00**
- 1421 ★ #727ii, 1979 \$2 Kluane National Park Upper right sheet corner vertical strip of five, showing light to quite prominent kiss print of the silver (engraved) inscriptions, printed in reverse and slanting on four stamps, unusual, F-VF NH *(Illustrated on website)* **Est. 500.00**
- 1422 ★ #727var., 1979 \$2 Kluane National Park Lower right (blank) corner block of nine, with Repellex error (missing colour) on right column, unusual, VF NH *(Illustrated on website)* **Est. 400.00+**
- 1423 ★ #727var., 1979 \$2 Kluane National Park Horizontal mint pair, sheet margin at right, showing a dramatic shift of the silver inscriptions (10mm to left), resulting in right stamp without the "\$2" denomination, most appealing, VF NH *(Illustrated on Page 94)* **Est. 750.00**



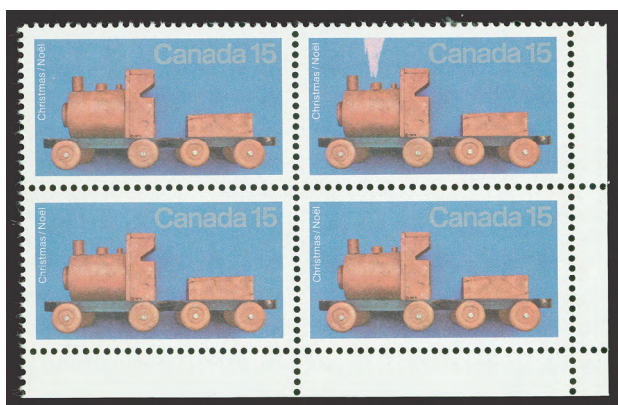


1423



1424

- 1424 ★ #727var., 1979 \$2 Kluane National Park Horizontal mint strip of five, showing Repellex error (missing colour) on the two right stamps and partially on centre stamp, rarely seen and striking, VF NH **Est. 500.00+**



1425



1426

- 1425 ★B #839var., 1979 15c Wooden Train Lower right (blank) corner block of four, showing partial unprinted colour on upper right stamp, giving it the appearance of smoke coming out of the engine, appealing, VF NH, 1985 Greene Foundation cert. **Est. 400.00+**

- 1426 ★ #839var., 1979 15c Wooden Train Mint single with silver inscription shifted to right and with one-bar tagging (G1aL) error, unusual, VF NH **Est. 150.00**



1427

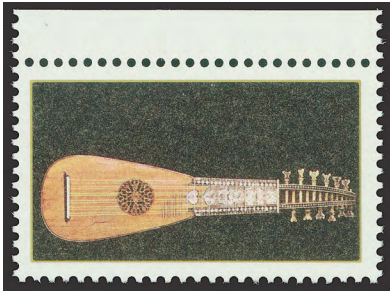


Normal



1428

- 1427 ★ #841a, 1979 (35c) Knitted Stuffed Doll Mint example showing the gold inscriptions and tagging omitted. A striking and very scarce error, VF NH **1,750.00**
- 1428 ★ #841a, 1979 (35c) Knitted Stuffed Doll Mint example showing the gold inscription and tagging omitted error, a very scarce and appealing major error, VF NH **1,750.00**



1429



1430

- 1429 ★ #878i, 1980 (17c) **Antique Mandora** An attractive mint single, printed on the gummed side, missing inscriptions and untagged. A desirable triple error, VF NH **2,000.00**
- 1430 ★ #878var., 1980 17c **Antique Mandora** Imperforate pair with brown and magenta omitted colours, faint wrinkles along left margin, scarce and striking, VF NH **Est. 1,000.00**
- 1431 ★ #908a, 1981 "A" (30c) **Red Maple Leaf** Complete imperforate strip of thirteen with normal perforated stamp at each end of the strip, very scarce, VF NH *(Illustrated on website)* **3,000.00**
- 1432 ★ #908a, 1981 "A" (30c) **Red Maple Leaf** Complete imperforate coil strip of thirteen with normal perforated stamp at each end of the strip, very scarce, VF NH *(Illustrated on website)* **3,000.00**



- 1433 ★ #908a, 1981 "A" (30c) **Red Maple Leaf** Imperforate coil strip of ten, with normal perforated stamp at left, very scarce, VF NH **2,500.00**



1434



1435

- 1434 ★ **PB** #924T1, 1983 32c **Red on Cream Maple Leaf** Matched set of blank (as issued) corner blocks of four, the scarce untagged error, lower right with counter number in margin, F-VF NH **1,000.00**
- 1435 ★ **B** #924T1 + var., 1983 32c **Red on Cream Maple Leaf** Top sheet margin block of four, untagged error and showing beige colour partially missing, F-VF NH Note: This multiple originated from the sheet where the beige (background) was completely missing on some stamps. **Est. 600.00+**





Normal



Omitted Colour

- 1436 ★ #924c, 1983 32c "Maple Leaf in Winter" Well centered mint example of this popular error, beige (background colour) and tagging omitted, VF NH **1,500.00**



- 1437 ★ #929i, 1983 48c Cradle Upper left plate inscription block of four, MISSING MAGENTA colour error, VF NH, 2005 Greene Foundation cert. **1,800.00**



1438



1439

- 1438 ★ #934a, 1984 (\$1) Glacier National Park Mint single with blue (engraved) inscriptions omitted, very scarce, VF NH **1,250.00**
- 1439 ★ #934var., 1984 \$1 Glacier National Park Mint single with engraved inscriptions shifted (8mm to left), thus resulting with \$1 located at right instead of left-hand side, VF NH **Est. 200.00+**
- 1440 ★ #934var., 1984 \$1 Glacier National Park Mint single showing a spectacular deep blue engraved inscriptions shifted (8mm to left), "\$1" located at right instead of being at left, interesting and striking, VF NH *(Illustrated on website)* **Est. 200.00+**

Visit us online [www.easternauctions.com](http://www.easternauctions.com)

or

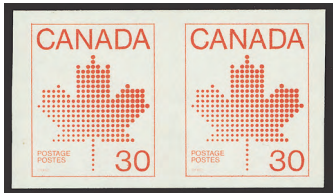
E-Mail us at [easternauctions@nb.aibn.com](mailto:easternauctions@nb.aibn.com)



1441



1444



1442



1445

- 1441 ★B #936var., 1985 \$2 Banff National Park Upper left sheet corner block of six (2x3), showing a dramatic vertical perforation shift (6mm to left), trimmed by the printer at left, unusual and an attractive multiple, VF NH **Est. 600.00**
- 1442 ★ #950a, 1982 30c Red Maple Leaf Imperforate coil pair with large margins, XF NH **450.00**
- 1443 ★ #950a, 1982 30c Red Maple Leaf Imperforate coil mint pair, seldom seen, VF NH  
*(Illustrated on website)* **450.00**
- 1444 ★ #952a, 1985 34c Dull Red Brown Imperforate coil strip of four, VF NH **400.00**
- 1445 ★ #1157var., 1988 3c Muskrat Lower left (blank) corner block of four, showing extra "H-comb" perforation lines (vertical and horizontal) through stamps, unusual, VF NH **Est. 250.00+**



1446



1447

- 1446 ★ #1158a, 1988 5c Varying Hare Vertical imperforate pair with sheet margin at top, very scarce, VF NH **2,000.00**
- 1447 ★B #1165d, 1988 38c Parliament (Slater Paper) Right margin block of four, showing double impression of all lithographed colours except for black, scarce, VF NH **1,400.00**





- 1448 ★ #1171c, 1989 (November) 44c Walrus, Slater Paper, Perf 13.8x13.1 Change Key mint single of this sought-after perforation variety, VF NH** **550.00**



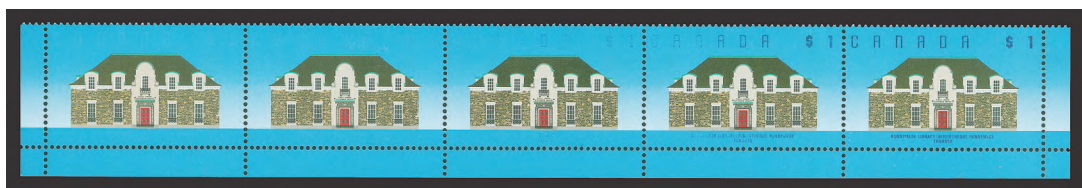
X1449



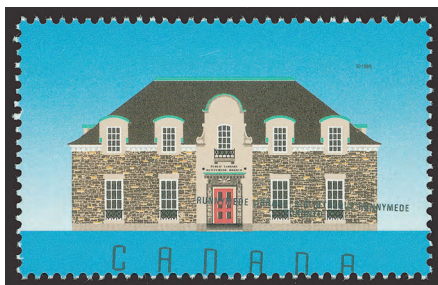
X1450

- 1449 ★ #1174i, 1989 59c Musk Ox (Slater Paper), Perf 14.4 x 13.8 Matched set of plate inscription blocks of four, very scarce, VF NH** **1,000.00**

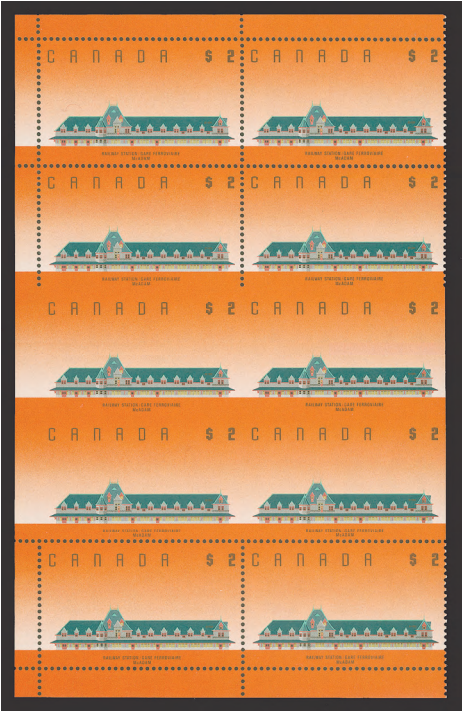
- 1450 ★ #1175a, 1990 61c Timber Wolf, Perf 13.1 Change Matched set of blank (as issued) corner blocks of four, scarce, VF NH** **1,800.00**



- 1451 ★ #1181iii + var., 1989 \$1 Runnymede Library** An interesting and unusual horizontal strip of five, showing a gradual missing colour error, completely missing on the two left stamps (only shows the embossing), colour mostly missing on centre stamp and partially missing on the two right stamps. Very scarce modern error with much appeal, VF NH **4,000.00+**



- 1452 ★ #1181var., 1989 \$1 Runnymede Library** Mint single with blue (engraving) inscriptions shifted to bottom right of the stamp, only one sheet known and only five stamps (first column of the sheet) shows the "\$1" omitted, small spot of gum disturbance, very scarce, VF **Est. 400.00+**



1453



1461

- 1453 ★ **#1182ii, 1989 \$2 McAdam Railway Station** Left-hand blank sheet margin block of ten (2x5) imperforate horizontally above third and fourth row and imperforate vertically in third and fourth row, very scarce, VF NH **4,250.00**
- 1454 ★ **#1182var., 1989 \$2 McAdam Railway Station** Right-hand block of fifteen (3x5) from field stock (blank) sheet, with horizontal perforation shift (3mm down), resulting in the horizontal perfs going through the engraved "CANADA \$2" inscriptions, unusual, VF NH *(Not Illustrated)* **Est. 300.00+**



1455



1456

Illustration only shows portion of coil strip.

- 1455 ★ **#1194Ae, 1989 38c Dark Green Parliament** Imperforate coil pair on dull fluorescent paper, large margins, a scarce and key pair, XF NH **500.00**
- 1456 ★ **#1194Avar., 1989 38c Dark Green** An interesting coil strip of twenty-five stamps, showing a blank space (12mm wide) between second and third stamps from the bottom, resulting in a dramatic perforation shift through 23 stamps, "38 CANADA" inscriptions being at the bottom and showing a three-bar tagging variety, unusual and appealing, VF NH **Est. 500.00+**





1457



1460



1459

- 1457 ★ #1194Bf, 1990 39c Dark Violet Imperforate coil mint pair on dull fluorescent paper, VF NH **250.00**
- 1458 ★ #1194Bf, 1990 39c Dark Violet Imperforate coil pair on dull fluorescent paper, large margins, XF NH  
(Illustrated on website) **250.00**
- 1459 ★ #1194Cg, 1990 40c Blue Grey Imperforate mint pair on dull fluorescent paper, choice, XF NH **375.00**
- 1460 ★ #1194Cvar., 1990 40c Blue Grey Flag Dramatic misperforated coil pair, plus two blank stamps at top and tagging shift. Striking error and unlisted in R. Harris handbook, VF NH **Est. 500.00+**
- 1461 ★B #1320ai, 1991 40c Small Craft Se-tenant mint block of ten, imperforate vertically between stamps and right sheet margin. A very scarce large multiple showing the error, VF NH  
(Illustrated on Page 99) **1,750.00**



- 1462 ★ PB #1354a, 1992 10c Kinnikinnick Berries Mint marginal block of twenty (2x10) from left-hand side of the sheet, showing horizontal pair from bottom row imperforate except along top of stamps, very scarce, only five panes (25 blocks) have been discovered, VF NH **1,650.00**
- 1463 ★ #1357i, 1991 42c Queen Elizabeth II Imperforate mint pair with large margins, XF NH  
(Illustrated on Page 101) **1,000.00**
- 1464 ★ #1357i, 1991 42c Queen Elizabeth II Imperforate mint pair with large margins, choice, XF NH  
(Illustrated on website) **1,000.00**



1463



1465

1465 ★ #1358ai, 1992 43c Queen Elizabeth II Imperforate mint pair with large margins, XF NH 1,200.00

1466 ★ #1358ai, 1992 43c Queen Elizabeth II Imperforate mint pair with huge margins, choice, XF NH  
(Illustrated on website) 1,200.00



1467



1468

1467 ★B #1359f, 1994 43c Flag over Field (Leigh-Mardon Printing) Perf 14½ Mint block of four, with margin at right, imperforate between due to misguillotined booklet panes, very scarce especially as a multiple, VF NH 2,000.00+

1468 ★ #1359f, 1994 43c Flag over Field (Leigh-Mardon Printing) Vertical mint pair, sheet margin at right, imperforate horizontally between stamps, originating from miscut booklet panes, VF NH 1,000.00



1469 ★B #1360var., 1995 45c Queen Elizabeth II (CBN Printing) Bottom sheet margin block of nine, showing a dramatic misalignment of the perforation gauge, thus resulting in a striking part imperforate error. The first time we have seen this interesting error, VF NH Est. 1,000.00+



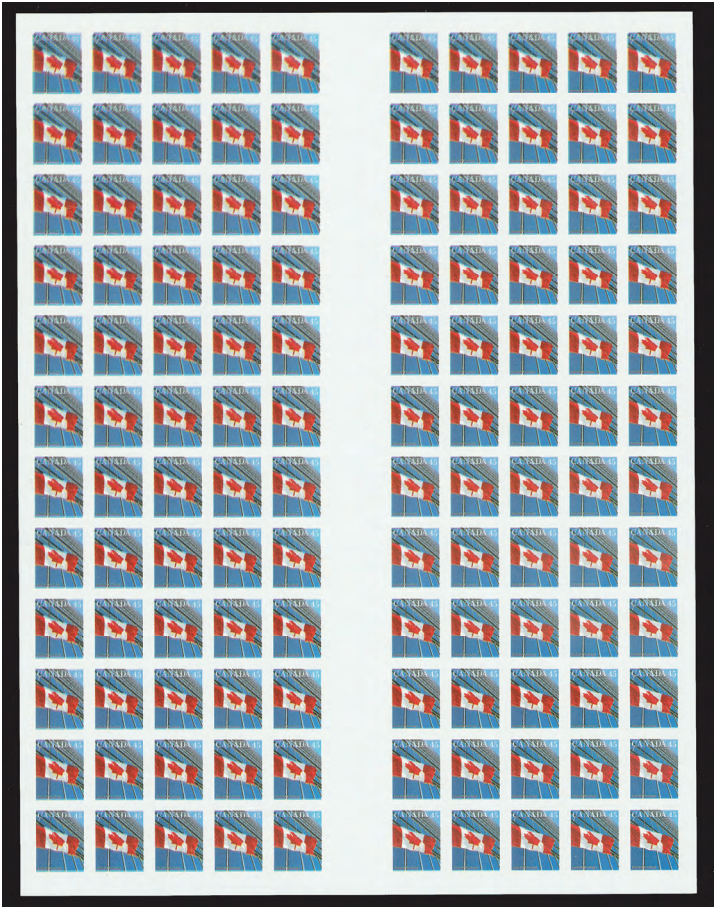


1470



1472

- 1470 ★B #1361ds + var., 1995 45c Flag over Building (CBN Printing, Coated Papers), NF, Perf 13½x13 Mint block of four originating from booklet pane of ten, showing a very prominent and striking blue ink offset on reverse of stamps, unusual and unlisted, VF NH **Est. 300.00**



- 1471 ★S #1362ii, 1362iii + var., 1998 45c Flag over Building (CBN Printing; Small Format) An impressive IMPERFORATE FULL GUTTER SHEET OF 120, showing a double impression of the printing that is more pronounced towards the upper left corner of the sheet. This sheet is in sound condition with full original gum, never hinged, without any bends and wrinkles which plague the majority of the imperforate pairs we have seen, VF NH (Darnell 1797c, 1797e \$126,000) **78,600.00**

A VALUABLE AND RARE INTACT SHEET. ONE OF ONLY TWO REMAINING IMPERFORATE GUTTER SHEET OF THE FORTY-FIVE CENT FLAG OVER BUILDING (SMALL FORMAT).

- 1472 ★B #1362iii, 1998 45c Flag over Building (Small Format - CBN Printing) An impressive imperforate block of four with vertical gutter margin, large margins and in pristine condition, very scarce thus, XF NH *(Illustrated on Page 102)* **5,500.00**



- 1473 ★ #1367i, 1991 65c Black Walnut Imperforate mint pair from the upper left sheet corner, scarce, VF NH **1,500.00**

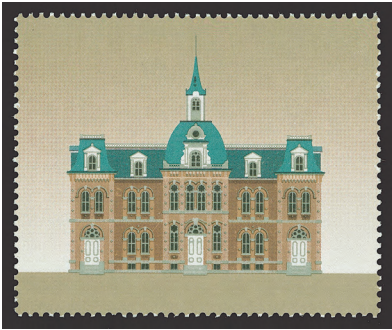


X1474



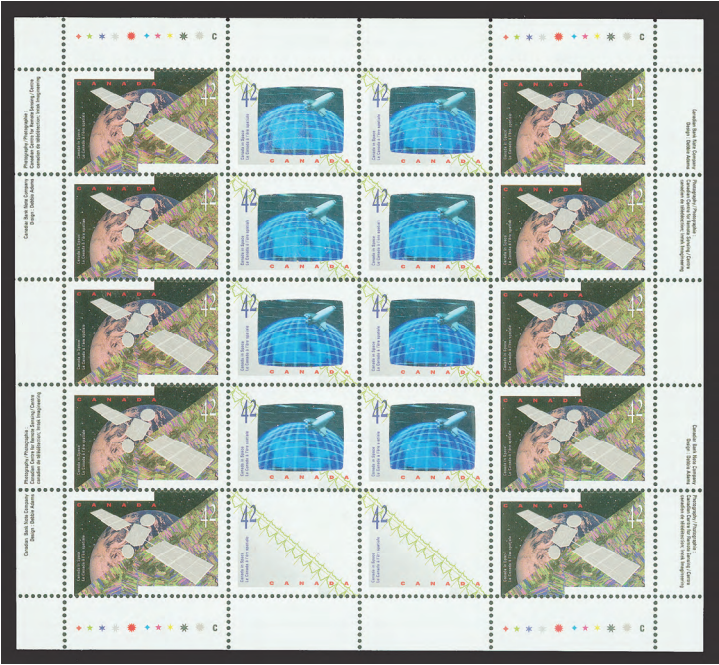
1475

- 1474 ★ #1370a, 1995 71c American Chestnut (APCL, Coated Papers), Perf 14.4x13.8 Change Matched set of blank (as issued) corner blocks of four, scarce, VF NH **1,400.00**
- 1475 ★ #1371i, 1991 84c Stanley Plum Imperforate vertical pair with sheet margin at right, choice and scarce, VF NH **1,500.00**



- 1476 ★ #1376a, 1994 (\$2) Provincial Normal School, Truro (LM Printing), Perf 14½x14 Mint single with dark green (engraved) inscriptions omitted, very scarce, VF NH **1,500.00**
- 1477 ★ #1395iii, 1992 43c Olive Green Three imperforate coil strips of thirteen, all on Hibrite paper, each perforated only once at top of the strip, and each strip has couple stamps with light horizontal gum bend, otherwise VF NH *(Illustrated on website)* **4,500.00**





1478 ★S #1442b, 1992 42c Canada in Space Se-tenant sheetlet of twenty stamps, MISSING HOLOGRAM error on bottom two stamps, minor gum wrinkles and perf separation on top left pair in no way detract. A very scarce and sought-after modern error, VF NH **5,000.00**



1479



1480



1482



1483

1479 ★ #1518a, 1994 43c XV Commonwealth Games Se-tenant mint pair, with silver inscriptions error, instead of gold inscriptions, very scarce and unlisted, VF NH **Est. 750.00**

1480 ★B #1683ii, 2000 47c Queen Elizabeth II Mint block of eight, imperforate bottom pair and half of second last row, with normal perforated block of four at top, VF NH **1,200.00**

1481 ★S #1701ii, 2003 \$5 Moose Sheet of four showing strong offset of the brown "Moose" on the gum side, seldom seen, VF NH **(Illustrated on website) 600.00**

**1482 ★B #1705ii, 1998 46c Flag over Iceberg (AP Printing, JAC Paper), Self-Adhesive** Gutter margin block of four, originating from booklet pane, imperforate horizontally between both vertical pairs, VF  
*(Illustrated on Page 104)* **300.00+**

**1483 ★ #1878var., 2000 (47c) Stylized Maple Leaf, Serpentine Die Cut** Self-adhesive coil pair, showing dramatic perforation shift (4mm up), resulting in missing denomination and three-bar tagging varieties, an appealing error, VF  
*(Illustrated on Page 104)* **Est. 200.00+**



1484



1486



1485

**1484 ★ #1931i, 2002 48c Flag over Canada Post Head Office** Self-adhesive booklet single with blue colour omitted error, VF **500.00**

**1485 ★ #1932a, 2002 48c Golden Jubilee** Imperforate mint pair with sheet margin at right and large margins on other sides, very scarce, VF NH **1,800.00**

**1486 ★ #1934var., 2002 \$1.25 Year of the Horse** Imperforate souvenir sheet essay, with overall quadrille grid, embossed and untagged, scarce, VF NH **850.00**

**CANADA FIRST ISSUED BOOKLET**



**1487 ★ #BK1, 1900 2c Queen Victoria "Numeral"** An impressive complete and intact booklet, containing both booklet panes of six stamps, plus all insert pages and glassine interleaves. The booklet panes are both fresh and reasonably centered and shows full pristine original gum, never hinged, rare thus, some markings and slight rubbing on covers only, otherwise content is pristine and quality much nicer than normally encountered for Canada's first booklet, F-VF NH (Catalogue value is for two booklet panes)  
**5,800.00**





## AIR MAIL AND SPECIAL DELIVERY



1488



1489



1491



1492

**1488 P** #C1, 5c Brown Olive Large Die Proof printed in colour of issue on india paper, 102x87mm, die sunk on large card, 140x148mm, without die number and imprint, very scarce, VF **Est. 1,250.00**

**1489 ★♦** #C1, XF-SUPERB (95) 1928 5c brown olive Allegory of Flight, exceptionally well centered within large margins, post office fresh colour and full immaculate original gum, never hinged, huge margins, choice. 2007 Sismondo cert. 95 XF-SUPERB **50.00+**



**1490 ★B** #C1b, 1928 5c Brown Olive Well centered mint block of four imperforate vertically, fresh with full original gum. A scarce multiple, XF NH **900.00**

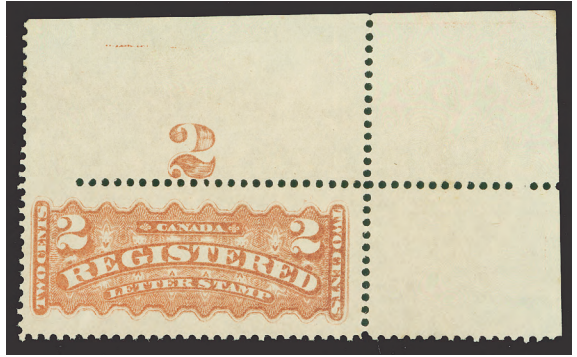
**1491 ★♦** #C2, GEM (100) 1930 5c olive brown Mercury Airmail, a superlative mint example, mathematically centered within well balanced large margins, gorgeous fresh colour and possessing full immaculate original gum, never hinged. A great stamp for the perfectionist, which obtained the lofty and highest grade. 2007 Sismondo cert. 100 GEM **240.00+**

**1492 ★♦** #C3, XF-SUPERB (95) 1932 6c on 5c brown olive Airmail Surcharge, very well centered mint example with full pristine original gum, never hinged. 2007 Sismondo cert. 95 XF-SUPERB **40.00+**

Illustration only shows a portion of the proof



1493



1498

- 1493 P** #C5, 6c Deep Red Brown Die Proof (stamp size) printed on india paper, colour slightly different the issued stamp, mounted on thick card, very scarce, VF, ex. *Sir Gawaine Baillie* **Est. 750.00+**

- 1494 ★** #CL24, 1927 (June 11) 10c (Type A) on (50c) Green and Red on Yellow Orange Paper, Rouletted Fresh mint single with full original gum, VF NH *(Illustrated on website)* **165.00**



1499



1496



1495



1497

- 1495 ★B** #E1, 1898 10c Green Lovely post office fresh mint block of four, reasonably centered with full original gum. A scarce and attractive multiple, F-VF NH **1,140.00**
- 1496 ★** #E1a, 1898 10c Yellow Green A gorgeous fresh mint single, nicely centered within large margins and possessing full immaculate original gum, VF NH **450.00**
- 1497 ★♦** #E6, GEM (100) 1935 20c dark carmine Special Delivery, mathematically centered mint example which cannot be improved upon, with post office fresh colour and full original gum, never hinged. A great stamp for the perfectionist. 2007 Sismondo cert. 100 GEM **26.00+**
- 1498 ★** #F1b, 1888 2c Rose Carmine Upper right sheet corner mint single with full sheet margins and value tablet "2" at top, stamp nicely centered within large margins and possessing full original gum, never hinged, lightly hinged in selvage only. A stunning stamp, VF NH **1,350.00**
- 1499 ★** #F3, 1876 8c Blue Well centered and fresh mint single with full white streaky original gum, lightly hinged. An exceptional stamp, VF LH **600.00**





## POSTAGE DUE AND WAR TAX



1500



1502



1501



1503

- 1500 ★♦ #J1, XF-SUPERB (95)** 1906 1c violet, (wet printing), very well centered mint single with deep rich colour and full original gum, never hinged. 2007 Sismondo cert. 95 XF-SUPERB **Est. 80.00+**
- 1501 ★B #J2, 2c Violet on Regular Wove Paper (Wet Printing)** Left sheet margin Plate A3 block of four showing Type A lathework at right of plate inscription, reasonably well centered, light hinge at top leaving bottom pair never hinged. An attractive and scarce plate multiple, F-VF **Est. 1,500.00+**
- 1502 ★ #J2a, 1924 2c Violet on Thin Wove Paper** A choice mint single, nicely centered and showing full Type D lathework at left, full original gum, never hinged, seldom seen so nice, VF NH **1,200.00**
- 1503 ★ PB #J2c, 1928 2c Reddish Violet (Dry Printing)** Right sheet margin Plate A5 vertical strip of four, reasonably centered and fresh, full original gum, very scarce, F-VF NH **Est. 400.00+**
- 1504 ★♦ #J14, XF (90)** 1933 10c dark violet, well centered and fresh mint single with full original gum, never hinged. 2007 Sismondo cert. 90 XF *(Illustrated on website)* **80.00+**
- 1505 ★B #MR2(shades), 1915 2c War Tax** Selection of five mint blocks of four, all with noticeably different shades, F-VF OG, a nice lot for the specialist *(Illustrated on website)* **Est. 250.00**



- 1506 ★ #MR2B, 1915 5c Blue Admiral "WAR TAX" Overprint** A remarkable mint example of this very challenging stamp with amazingly deep rich colour, nicely centered within large margins and possessing full pristine original gum, never hinged. One of the most difficult stamps of the Admiral issue to obtain in premium condition, VF NH **1,200.00**



- 1507 ★ **#MR2Ci, 20c Olive Green Admiral "INLAND / REVENUE / WAR / TAX" Overprint** A key and very seldom seen Plate No. 2 block of eight, gorgeous deep rich colour and reasonably centered for the issue, stamps possessing full original gum, never hinged, hinged in the selvage only. Under appreciated and missing from most advanced collections of plate multiples, F-VF NH **Est. 1,500.00+**



1508



1510



1509

- 1508 ★ **#MR2Ci, 1915 20c Olive Green "INLAND REVENUE / WAR TAX" Overprint** A choice mint example, unusually well centered for the issue, lovely fresh colour and possessing full unblemished original gum, never hinged. Very seldom encountered in such nice quality, VF NH **375.00+**
- 1509 ★ **#MR4a, 1916 2c + 1c Brown, Die I Mint single** with deep rich colour, F-VF OG, rarely seen **550.00**
- 1510 ★ **#MR4b, 1916 2c+1c Brown, Die I Imperforate block of four**, ungummed as issued, VF **500.00**



1511



1512

- 1511 ★ **#MR6, 1916 2c + 1c Carmine, Die I, Perf 8 Vertically** Mint coil strip of four, unusually well centered and fresh, two natural vertical gum skips, otherwise VF NH **2,400.00**
- 1512 ★ **#MR6ii, 1916 2c + 1c Rose Carmine, Die I Perf 8 Vertically** Nicely centered mint coil single, lovely fresh colour and with full original gum, VF NH **675.00**





- 1513 ★ **#O9, 1949-1950 50c Lumbering "O.H.M.S." Official Overprint** Upper right Plate No. 1 block of four, fresh and with very light hinge mark in the upper right sheet corner selvage only, leaving stamps never hinged. A scarce and key Official plate multiple, VF **1,800.00**



1514



1515

- 1514 ★ **#O10, 1949-1950 \$1 Train Ferry, "O.H.M.S." Official Overprint** Upper left Plate No. 1 block of four, well centered and fresh, choice, VF NH **900.00**
- 1515 ★ **#O38ai, 1961-1962 50c Textile Industry Flying "G" Official Overprint** A very scarce upper right Plate No. 2 block of four, showing the fishhook "G" variety on upper right stamp (Pos. 5), centered and fresh, mint with full original gum. Only a few plate multiple are known to exist, VF NH **1,000.00**



1516



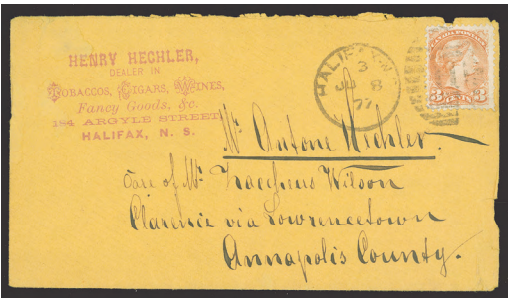
1517

- 1516 ★ **#O47iii, 1963 2c Green Cameo, "G" Official Overprint** Mint bottom sheet margin block of four, showing badly misplaced "G" on all four stamps, scarce multiple, VF NH **600.00**
- 1517 ★ **#OC8, 1943 7c Deep Blue Horizontal** mint pair with 4-hole OHMS (position C) on right stamp, left stamp with perforated OHMS omitted, very scarce, VF NH **Est. 300.00+**



- 1518 ★ #OX2a, 1902 Officially Sealed Victoria on Bluish Paper** A remarkable imperforate pair with fresh colour and full margins, ungummed as issued. One of the rarest of all Canadian imperforate pairs with only 25 printed, VF showpiece **5,000.00**

*The following two lots were submitted from a member of Henry Hechler's family.*



- 1519 ☒ Henry Hechler Correspondence** An interesting and unusual lot of fourteen covers, majority addressed to Antone Hechler, most from 1890s and franked with Small Queen issues, bearing Henry Hechler (Argyle or Granville Street) Halifax handstamp on reverse of cover. Noted very early 1877 (June 8) envelope with 3c Small Queen to Antone Hechler, Annapolis County; 1895 (April 5) Large envelope sent registered to USA, 20c rate made with ½c and 6c Small Queens, Hechler Coat of Arms red seal wax on back; 1891 (June 30) Unsealed envelope with two single ½c Small Queen to USA, etc. Also includes ten covers, all addressed to Henry Hechler, three originates from Great Britain. Condition is mixed, but an excellent opportunity for the postal historian **Est. 600.00**



X1520



1521

- 1520 ☒ Henry Hechler Overprints** Group of five postal stationery items, all unused; Webb Type A1a 1c blue postal card, 1c & 3c postal envelopes; Webb Type A2b 1c blue (pointed ornaments) wrapper; Webb Type D 1c blue (pointed ornaments) wrapper with OFFICIAL overprint in blue. Seldom seen group, F-VF **Est. 100.00+**
- 1521 ⓄB CANADA CITY PRECANCELS #TORONTO 11-163, 1c Green George V "Arch", Style 11** Unused block of four, showing the Major Re-entry (Position 96 Plate 2 LL) on lower right stamp, bottom pair is NH, scarce, Fine+ **Est. 100.00+**





## CANADA LARGE LOTS AND COLLECTIONS

- 1522 ★ Useful Mint Accumulation** Clean and fresh mint issues, displayed on black cards, ranging from mint never hinged singles to multiples and back-of-books issues. Noted NH Jubilees, #90a NH block, Admirals, One-dollar denominations from 1930s to 1950s, some Provinces, etc. Ideal lot for a show or internet dealer. Mainly F-VF or better throughout. Approx. retail value of \$5,000; catalogue value much higher  
(Not Illustrated) **Est. 750.00+**



- 1523 ★⊙ Valuable Mint / Used Selection** Displayed on several large black cards with better and useful material to be found, such as mint #51-53 blocks of four each with 2NH, 54 block regummed, 70 NH, 73 NH, 77d (used pane of six from booklet without tab margin at left, smudged cancel, minor flaws at foot), 86 NH block, 90a two NH pairs, 90vii NH block, 94, 106 NH block, 116 (2), 124, 133 NH pair, 158, 159 NH, 177 (2), 191i NH in mint block of nine, 227 NH block, 272 NH LL plate block, MR5 block, MR7i, BK5d, BK25 French (ink '1935' notation on front cover otherwise nice), etc., used with #8 faulty, some Large Queens and Small Queens notably with range of the 10c from early pale milky rose lilac to late salmon pink, #84, etc., also some Provinces with B.C. unused #7, used #8 grid '35' in blue, Newfoundland #36 NH gum bend, C8 NH, etc. Condition mixed on some to Very Fine. Worth a look.  
**Est. 1,500.00+**

- 1524 ★⊙ Mint / Used Grouping as Received** Many dozen stamps, displayed in nine retired European circuit books, with a wealth of issues throughout. Noted nice unused #14, mint #40, 44 (three shades), 45, 59, 73, 83, 111a, 136-138, used Cents to Small Queens, with #17, 19, 21c, 23, #46, 47, 60, 73, plus much more. Condition throughout mainly Fine or better  
(Not Illustrated) **Est. 600.00+**



- 1525 ★ CANADA AND PROVINCES Clean Mint / NH Collection** An attractive mint collection, neatly displayed on Lindner and Lighthouse hingeless album pages in a brown Lighthouse 13-ring album. Majority of the stamps are mint NEVER HINGED. Noted numerous better valued stamps such as NH #46, 71, 72, 122, 128a block, 133, 136-140, quite complete from 1932 to early 1950s, includes complete Airmails, most "OHMS" and "G" overprints, Special Delivery, Dues, plus 27 different booklet panes. Also Newfoundland with 132 different, most are mint NH, such as #35, 36, 189a imperforate block of four, C7-C9, etc. Mainly F-VF NH with many selected quality stamps. High catalogue value. Worth careful inspection.  
**Est. 2,500.00+**

- 1526 ★ Mint 1935-1978 Collection** A nice and clean collection, appears COMPLETE for the period covered, all in clear mounts and housed in a White Ace album. Includes back-of-book issues and coil issues (in pairs). A good percentage of issues, especially later issues are in never hinged condition. Overall quality is mainly VF throughout  
(Not Illustrated) **Est. 500.00+**

- 1527** ☒ **Large First Day Cover Collection** Consignment as received and offered intact, housed in 67 photo albums or FDC albums, very well covered from 1964 to 1995, including corner blocks, multiples, souvenir sheets, etc. All with cachets and majority are unaddressed. Also includes a fair amount of mint souvenir sheets, miniature panes, unused postal stationery, booklets, etc. Plus some USA FDC and First Flights and odds & ends. Fine to Very Fine **Est. 1,000.00+**  
**HEAVY LOT – VIEWING AT OUR OFFICE ONLY.**



- 1528** ★◎ **#4/O10, Mostly Mint Selection** Assortment of various issues with several better mint issues, such as (all Very Fine) #52 (NH), 53 (NH), 92, 104 (NH), 120, 126 (NH pair), 134 (NH pair), 135 (NH), 929i, (NH), C4 (NH), E1, J14 (NH), O10 (NH), 2004 Write Me, Ring Me (two sets of four), plus #76a (F-VF OG), 159 (F-VF OG), used #4 (VF used), also Newfoundland #3 VF part OG, tiny tear at foot, not mentioned in accompanied 1949 RPS cert., etc. A useful lot and worth a look. **Est. 1,000.00+**
- 1529** ★◎ **#4d/65, Valuable Consignment as Received** Includes several used early issues, such as #4d, 14/20 plus some shades, used Large Queens, 1897 Jubilee set up to the \$3, mint original gum or unused no gum, plus \$4 and \$5 used. Some small flaws to be expected, otherwise Fine or better  
*(Not Illustrated)* **Est. 1,000.00+**
- 1530** ◎ **#14/20, Cents Issue Study** Displayed in black mounts on quadrilled pages, which includes 1c (5), 2c (2), 5c (61), 10c (9), 12½c (8) and 17c (1). Mixed to Fine or better throughout, with shades, printings, perforations, etc. Worth a look. Scott catalogue value over \$5,000. *(Not Illustrated)* **Est. 750.00+**



- 1531** ★ **#14/47, Decimal "Cents" to Small Queen Issues** A valuable and worthwhile lot of 25 different mint / unused issues, starting with early Cents issues, such as #14 (two shades), 15, 17, 18, 22, 25, 27, 28, 29, 30, 34, 35, 36, 37, 38, 41, 42, 43, 44 (two shades), 45 (two shades), 46, 47. A few trivial flaws noted, otherwise Fine to Very Fine and worth a look **Est. 1,500.00+**
- 1532** ◎ **#21/30, Large Queen Issue Study** Used collection, in black mounts and displayed on quadrilled pages. Includes ½c (3), 1c brown red (4), 1c yellow orange (5), 2c (3), 3c (7), 5c (4), 6c (16; with identified (unlisted) plate varieties, 12½c (5), 15c (11). Includes shades, paper, perforations, cancels. Condition throughout is Mixed to Fine or better and worth a look. Scott catalogue value over \$8,000.  
*(Not Illustrated)* **Est. 1,000.00+**
- 1533** ★◎ **#34-45, Old-Time Small Queen Collection** As received and neatly mounted on quadrilled pages with glassine interleaves, includes mint issues, wide range of shades and unchecked for varieties and cancels. Condition throughout is Fine or better and worth a look for potential finds. Scott 2008 catalogue value \$5,192. *(Not Illustrated)* **Est. 750.00+**

Call us toll free in North America  
Dial 1(800) 667-8267  
or  
Fax us 1(888) 867-8267





- 1534 ★ #50/103, Valuable Queen Victoria and King Edward VII Mint Issues** Clean mint collection in clear mounts and displayed on White Ace album pages and on one stockpage. Includes 1897 Jubilee ½c to \$3, plus the \$5 (also extra 5c, 6c, 8c, 10c, \$2, 1897-1898 "Leaf" TWO complete sets, 1898-1902 "Numeral" ½c to 20c complete set, 1903-1908 1c to 10c KEVII, 1908 Quebec set of 8, 1898 Map block of four and two singles. Quality is nicer than normally seen on this issues and many have select centering, some with trivial flaws, otherwise Fine to Very Fine throughout and worthwhile a look. **Est. 2,500.00+**

- 1535 ★◎ #66-88, Old-Time "Leaf" and "Numeral" Collection** As received and neatly mounted on quadrilled pages with glassine interleaves. Includes mint sets of both issues, plus some shades and wide range of cancels. Unchecked for plate varieties and re-entries. Condition throughout is Fine to Very Fine. Worth a look. Scott 2008 catalogue valuation \$4,108. *(Not Illustrated)* **Est. 600.00+**



- 1536 ★B #104/O10, Clean Mint 1911-1935 Collection** Comprehensive collection, neatly displayed in clear mounts on White Ace album pages, quite complete for the period covered, includes mint #104-122, 126-134 pairs, 136-138 pairs, 149-157 & 159, 160-161 pairs, 162-177, 178i-183i line pairs, complete 1931 to 1935, also includes complete for period covered Airmails, Special Delivery, Postage Dues, Officials with O1-O10 set, a nice F2 (VF LH), better plate blocks with #201 UL Plate 1 (VF NH), 203 LL Plate 1, 209 LR Plate 1 (VF NH), plus some later issues and multiples on black stockpages. Overall nice quality, Fine to Very Fine **Est. 1,500.00+**
- 1537 ★ #104/O45, Mint Issues on Stockpages** Several dozen different mint singles displayed on three stockpages, mostly from 1920s to 1940s. Noted better such as #111a, 161-174, 195-201, 268-273, back-of-book with E1iv, F1a, etc. Mainly Fine to Very Fine *(Not Illustrated)* **Est. 200.00+**

**END OF AUCTION  
THANK YOU**

# British North America Specialists

Always looking for the unusual...



Nova Scotia 1851 One shilling Cold Violet, a superlative unused example of this sought-after classic stamp, which once graced the famous collection of Alfred H. Caspary and Frederick Mayer. Certainly the **FINEST KNOWN UNUSED EXAMPLE IN EXISTENCE**. *Recently purchased for our retail stock.*

**Esoteric...**

**Errors / Varieties...**

**Unlisted...**

**Please do not hesitate to contact us.**

***Gary J. Lyon (Philatelist) Ltd.***

P.O. Box 450 - Bathurst - New Brunswick - E2A 3Z4 - Canada  
Tel (800) 667-8267 - Fax (888) 867-8267 - Email [glstamps@nbnet.nb.ca](mailto:glstamps@nbnet.nb.ca)



